

Special Use Permit

- Required for construction of Light Rail system in Shoreline
- Puts conditions on project to ensure compatibility with adjacent land uses
- 21 day Public Comment Period starts with Notice of Application (expected in June 2017)
- Final decision made by the City's Hearing Examiner



Guiding Principles for Light Rail Facility Design

- Multi-modality
- Public Safety
- Sustainability
- Mobility
- Public Art
- Neighborhood Character
- Public Amenities
- Transit-Oriented Development



Adopted by Shoreline City Council in February 2016

1. Multi-modal – stations should be full-service transit hubs and provide great access and inviting and convenient connections for trains, buses, bikes, and pedestrians



Orca cards for purchase at stations

Safe walking/biking access to stations



2. Neighborhood Character – stations should connect to the surrounding community to encourage and enhance vibrant place-making

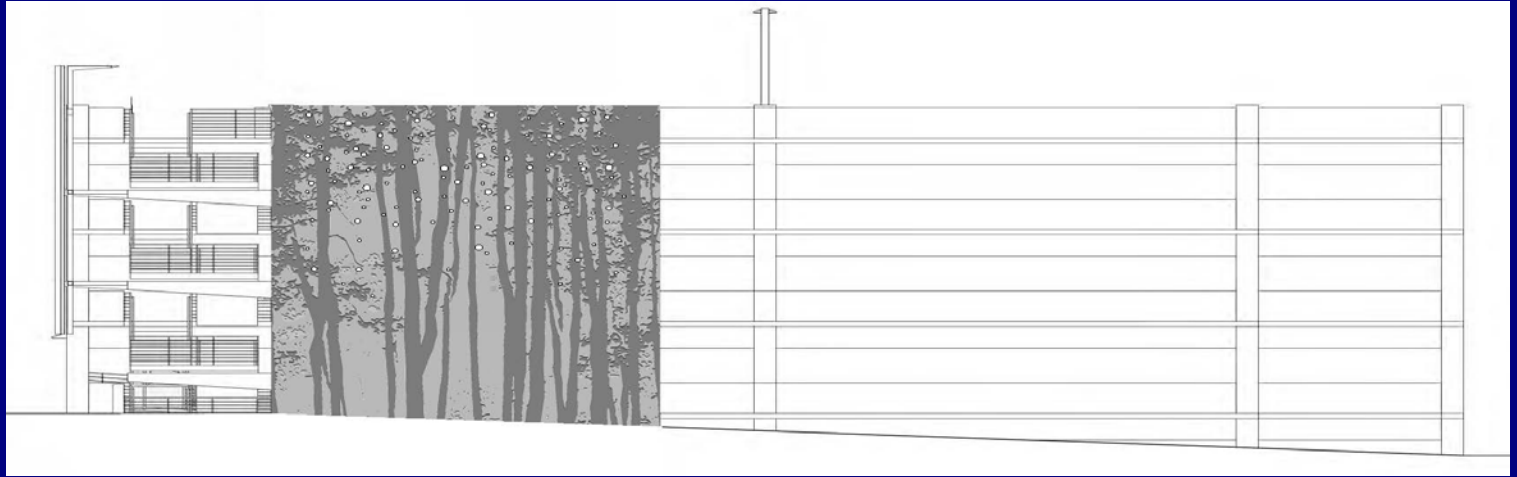


Native Plants

Public Gathering Spaces



JK WALSER



Excellent Design
to convey Sense
of Place -



3. Sustainability – all Sound Transit development should consider sustainable and climate friendly practices

Low Impact Development

Solar Panels



Angle Lake Station & Garage - LEED Gold



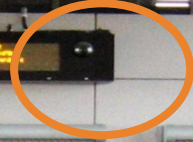
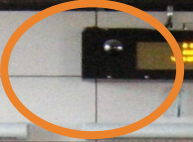
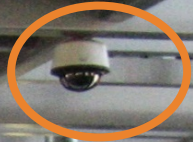
4. Public Safety – the facilities should be safe, welcoming areas for people of all ages at all times



Passenger Emergency Telephones



Closed Circuit TV's



5. Mobility – stations should provide accommodations for people of all ages and abilities

Tactile and wayfinding pavers

Accessible walking paths, drop off areas, and routes



6. Public Amenities – the stations should provide gathering places that create a sense of community and emphasize art, culture, and history of the community

Bike Facilities



Flexible public gathering spaces

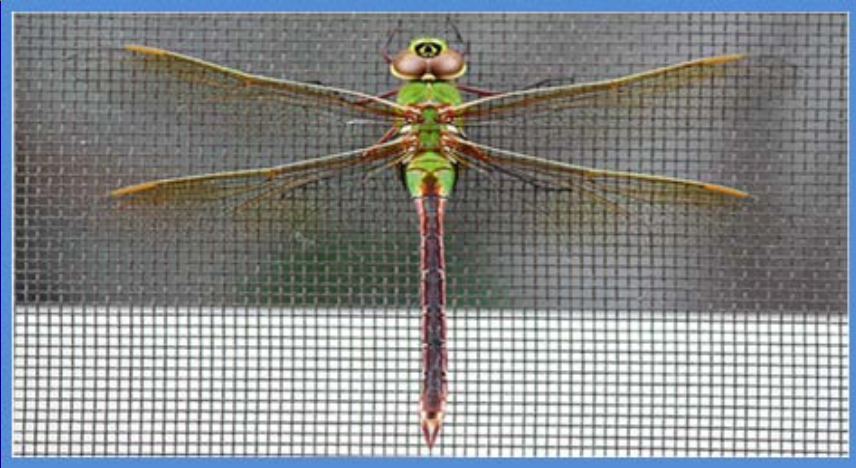
7. Transit Oriented Development – promote TOD through facility siting and design that is supportive of future development opportunities.

Sound Transit Roosevelt TOD Concept



8. **Public Art** – integrate elements of art wherever possible by:
- a. Utilizing local artists when feasible; and
 - b. Enhancing facades and public spaces with art.

STart Public Art



Topics to Consider

- Trees
- Neighborhood Traffic
- Parking
- Noise
- Aesthetics
- Bridge Design
- Walls and Fences
- Walking and Biking access to stations
- Critical Area impacts
- Utility and Public service impacts