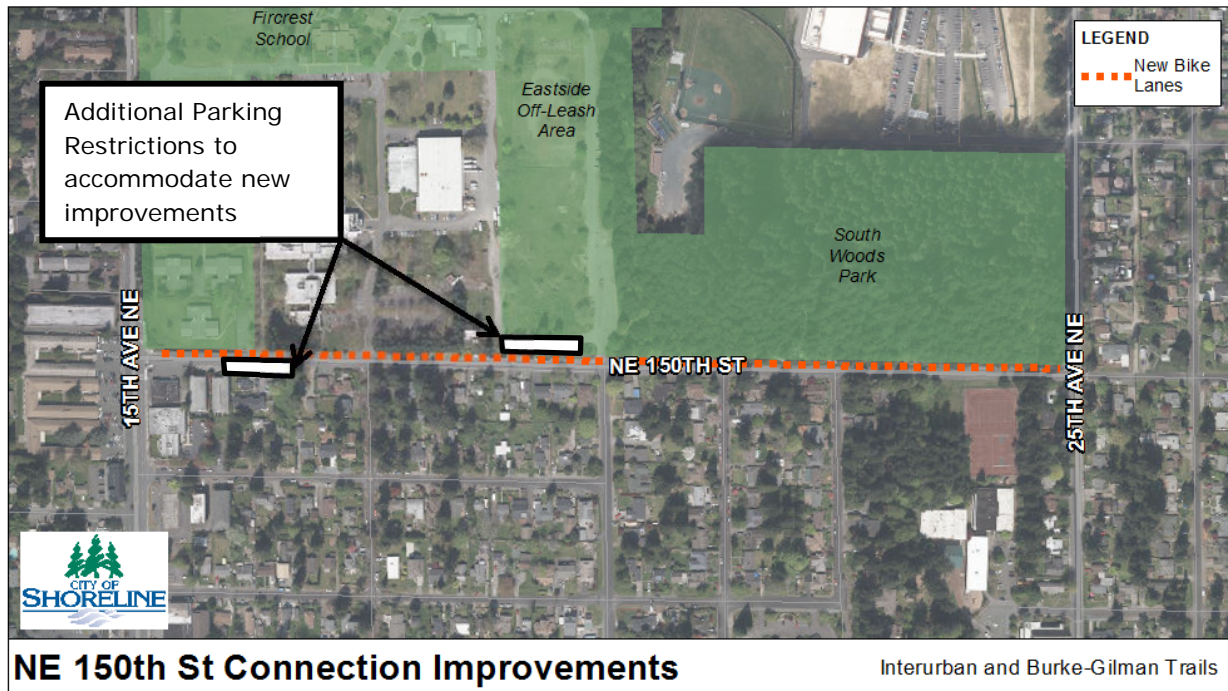




Interurban/ Burke Gilman Trail Connectors Project – NE 150th St



Project Overview:

In 2008, the City of Shoreline completed the Interurban Trail that runs north and south through the City. While this provides a valuable connection for users traveling north/south through Shoreline, it is missing a connection to the Burke-Gilman Trail. The City has collaborated with the City of Lake Forest Park and with assistance from the City's Bicycle and Pedestrian Advisory Committee identified northern and southern routes to connect the Interurban Trail and the Burke-Gilman Trail. The Bicycle Master Plan contained within the 2011 Shoreline Transportation Master Plan includes these routes. **See map on the back side of this flyer for route alignment.**

NE 150th St Modifications:

- New bike lanes along NE 150th St between 15th Ave NE & 25th Ave NE
- Approximately 380' of new asphalt sidewalk
- Removal of 10 on-street parking spots on the south side of NE 150th St to accommodate new bike lanes
- Removal of 15 on-street parking spots on the north side of NE 150th St to accommodate new sidewalk

For questions about this project,
please contact:
Alisa Arment, Capital Projects
Engineer, at (206) 801-2473.
Or visit our website at:
www.cityofshoreline.com/trailconnect

Construction is expected to begin Spring 2017

