



City of Seattle and City of Shoreline – Light Rail Station Design Open House

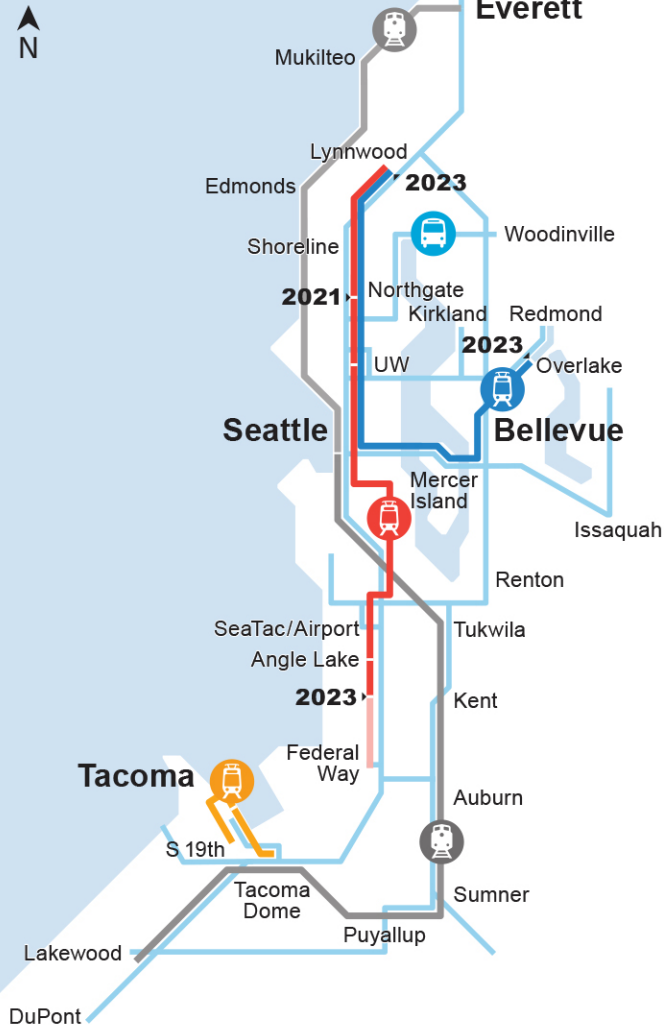
November 2016



Presentation overview

- Introductions
- Project description and schedule
- Light rail basics
- Architectural station design
- Open house guide





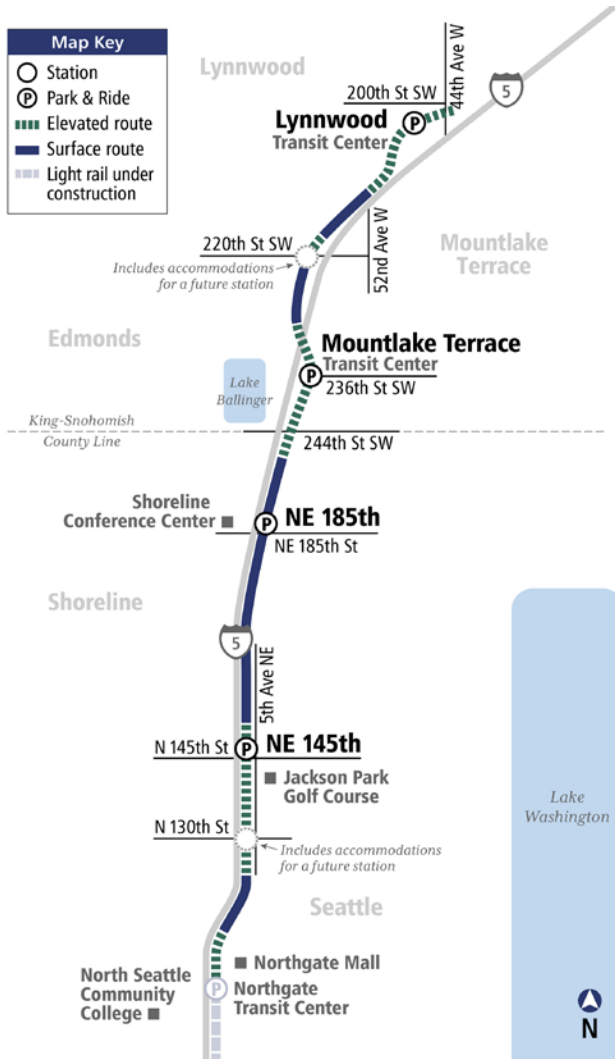
Sound Transit

Current service and approved projects

Link extensions:

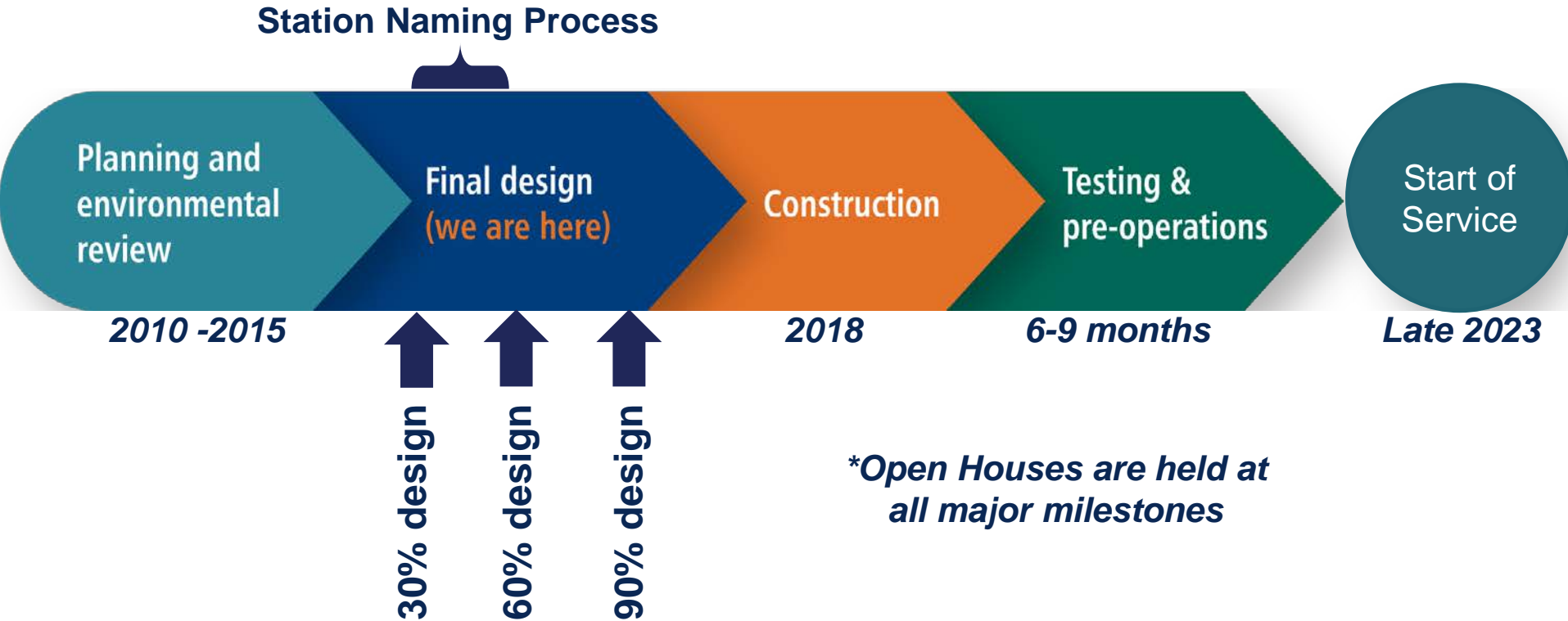
- University of Washington – Northgate
- Northgate – Lynnwood
- Downtown Seattle – Overlake
- Angle Lake – Kent/Des Moines
- Tacoma Theater District – S 19th

Lynnwood Link Extension



- 8.5 mile extension - Northgate to Lynnwood Transit Center
- 4 stations:
 - **Shoreline**
NE 145th Street – elevated
 - **Shoreline**
NE 185th Street – retained cut/fill
 - **Mountlake Terrace**
Mountlake Terrace Transit Center – elevated
 - **Lynnwood**
Lynnwood Transit Center – elevated

Project schedule



Link light rail basics



Light rail vehicles
System
Guideway
Platforms
Stations
Approach to design
Color and finishes

Bike facilities
System-wide elements
Entry elements
Security
Weather protection
Railings
Landscaping

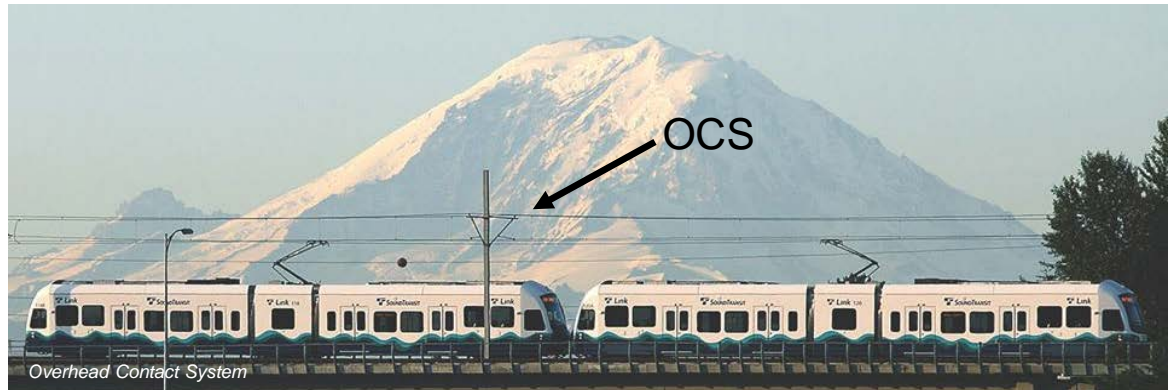
Link light rail vehicles

- 4 car trains – 380 feet long
- Low floor vehicles
- Wheelchair spaces at each door
- Bikes allowed on Link



Link light rail basics

- Light rail is versatile: at-grade, elevated, tunnels
- Electrically powered light rail vehicles (LRVs) run on railroad tracks
- Power delivered by Overhead Contact System (OCS)
- Trackside systems will be screened



Types of stations and guideway



Stations – balanced approach to design

Elements of continuity

- Station layout
- Families of parts/materials
- ST signage
- Standard colors



Bike facilities

Parking based on patronage

- Bike racks
- Bike lockers
- Bike cages

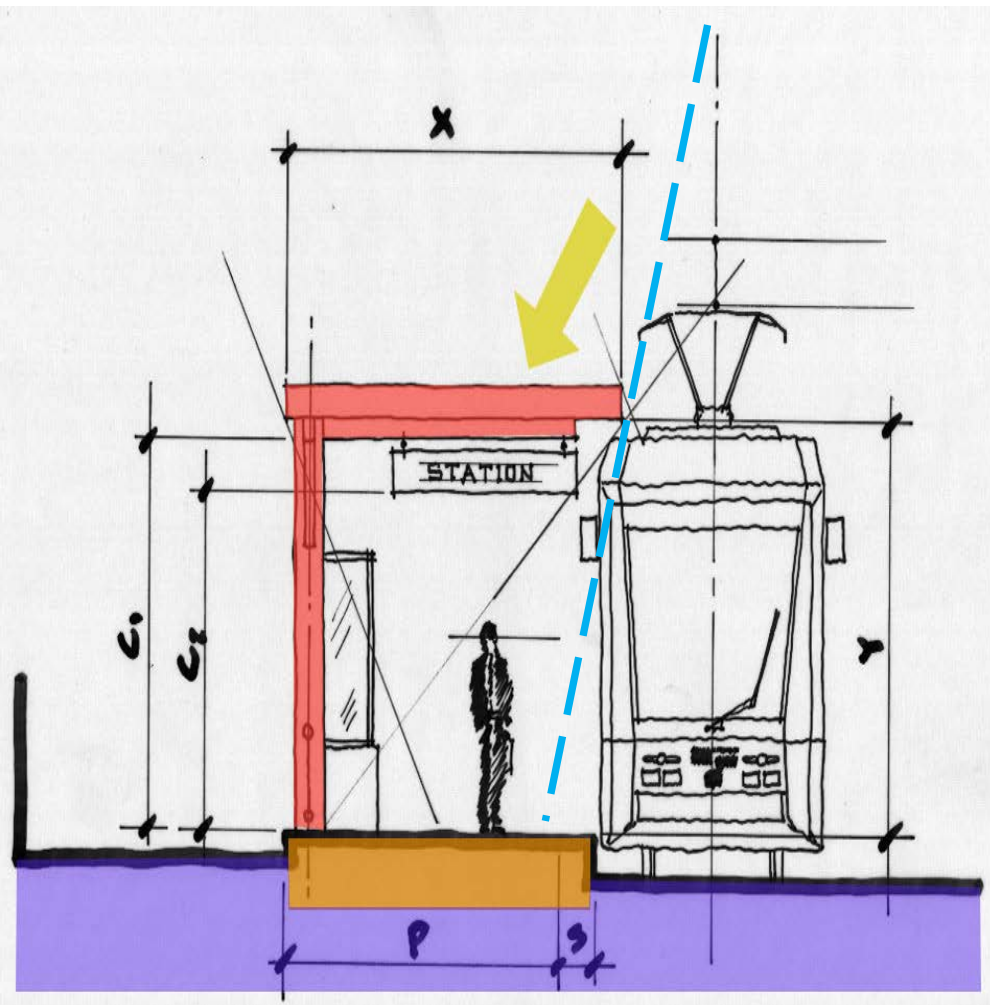


Entry elements

- ORCA card readers
- Fare paid zone
- Ticket vending machines
- Variable message signs
- Passenger emergency telephones
- Signage



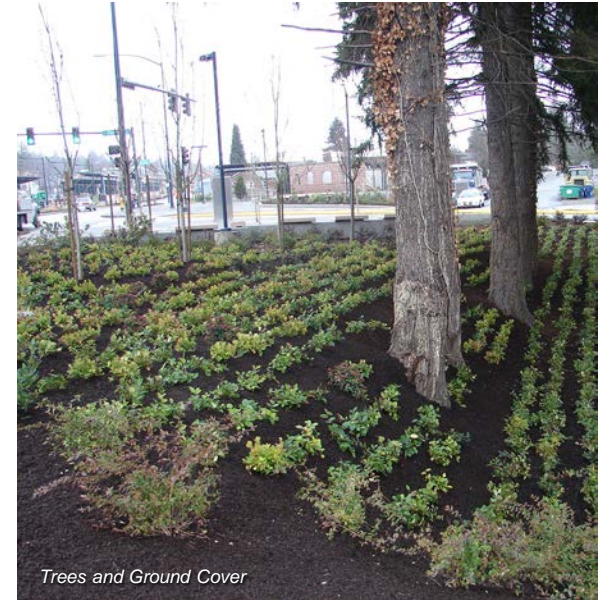
Weather protection



Canopy Coverage

Typical landscaping

- Native and adaptive species



STart, Sound Transit's art program

Claudia Fitch, 2003, *Shift*,
Lynnwood Transit Center



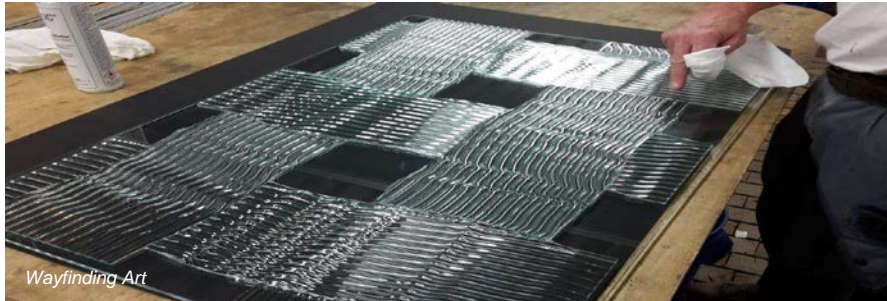
Laura Haddad, 2016, *Cloud*
Angle Lake Station, SeaTac





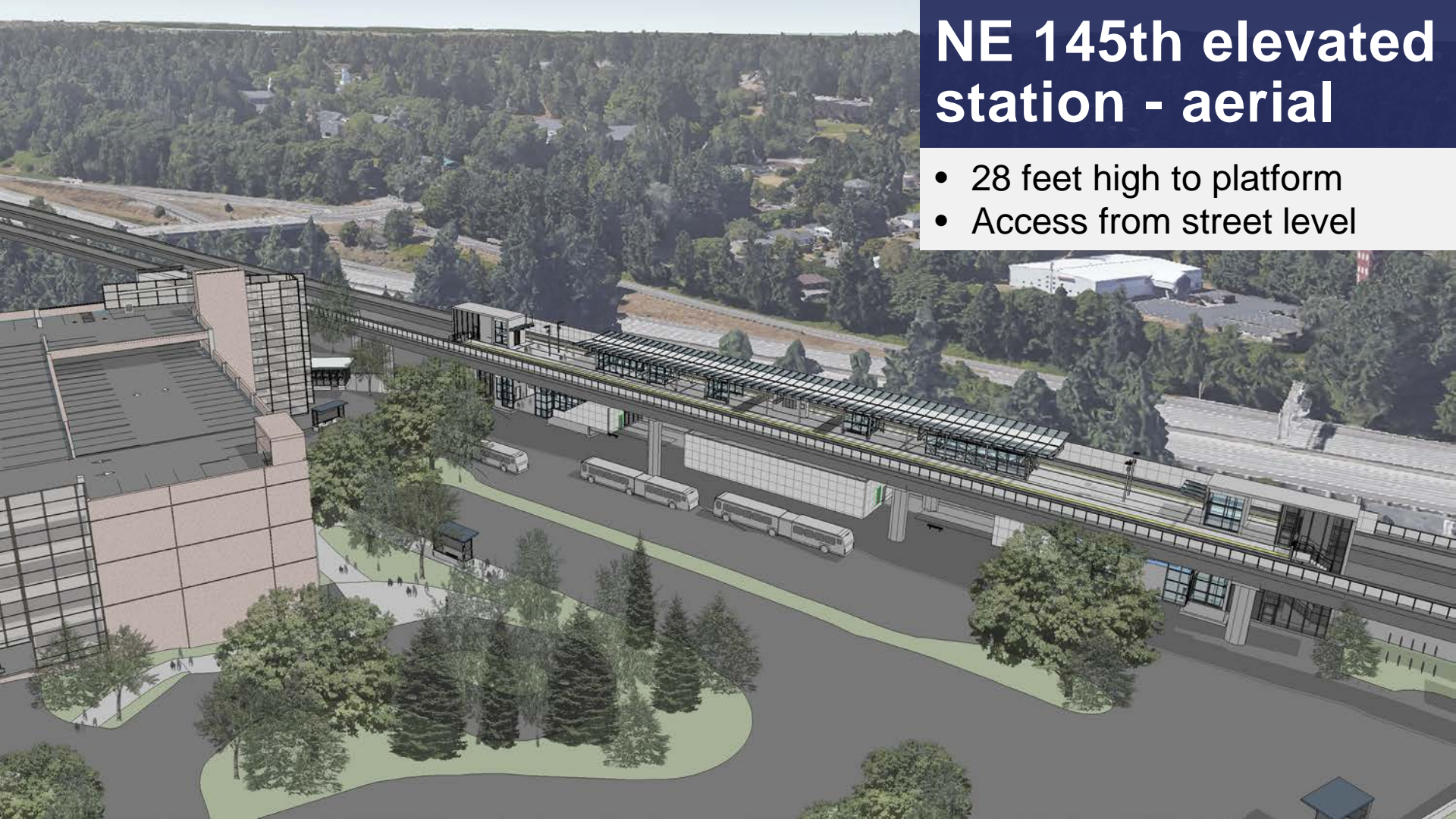
Community influence

- Milestones (30%, 60%, 90%)
- Station naming
- Station design and materials
- *STart*



NE 145th elevated station - aerial

- 28 feet high to platform
- Access from street level



NE 145th platform



Shoreline NE 185th - center platform



NE 185th cut/fill station - aerial

- 18 feet down to platform
- Access from street level



NE 185th plaza



Special Use Permit (SUP)

City code requirements

- Various land use permits anticipated for the project
- Special Use Permit will address impacts to critical areas
- Approximately 0.44 acres of wetland impacts
 - Will be mitigated in accordance with City's Critical Areas code
- Probable landslide hazard areas along I-5
 - Design strategies include tiebacks, retaining walls, etc.

City of Shoreline contact:

Juniper Nammi, AICP,
Senior Planner

jnammi@shorelinewa.gov
206-801-2525



Open House guide



Online Open House link:
lynnwoodlink.participate.online



 **SOUNDTRANSIT**
RIDE THE WAVE


SOUNDTRANSIT