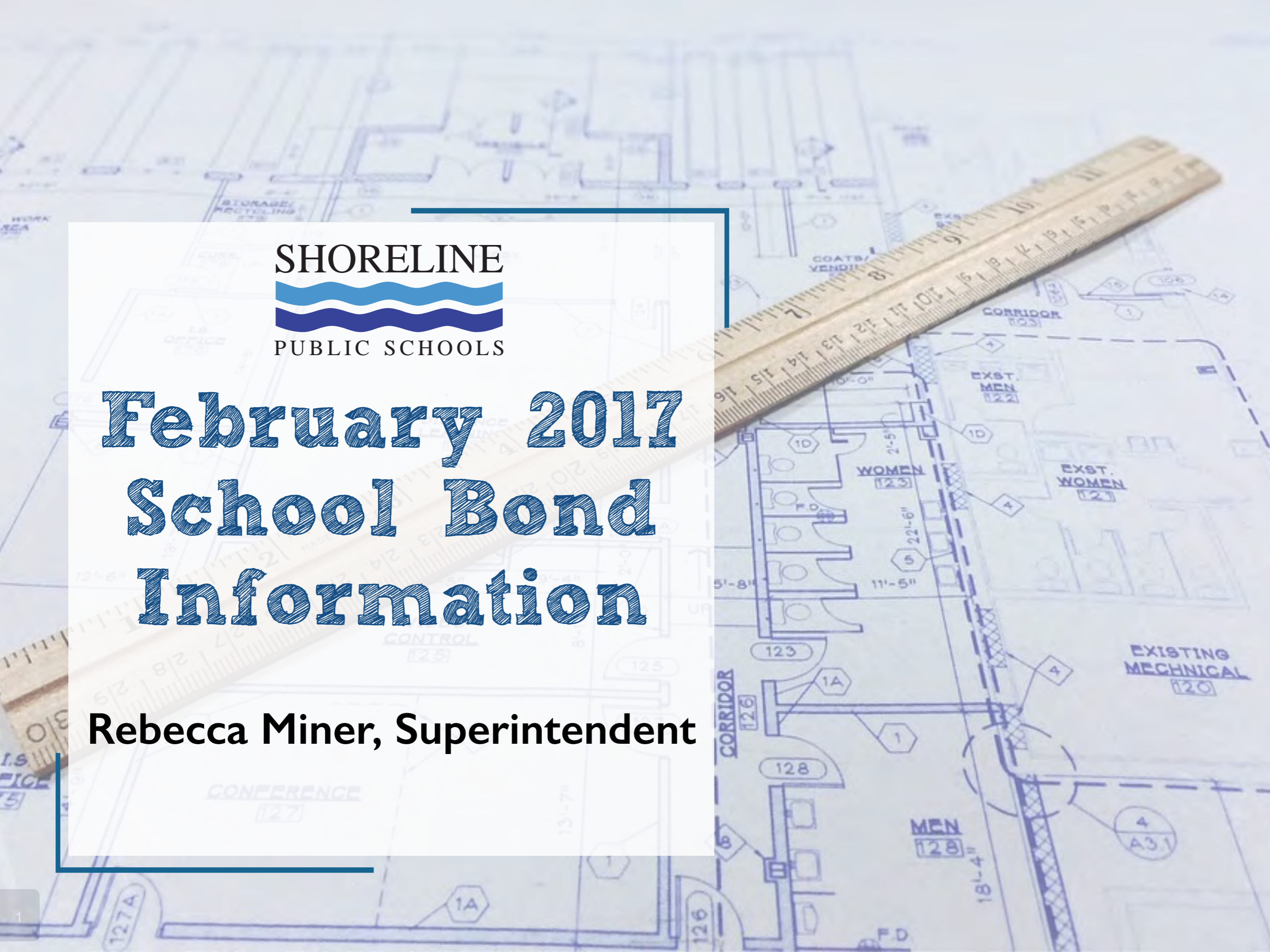




February 2017 School Bond Information

Rebecca Miner, Superintendent



School Funding: Bonds vs. Levies

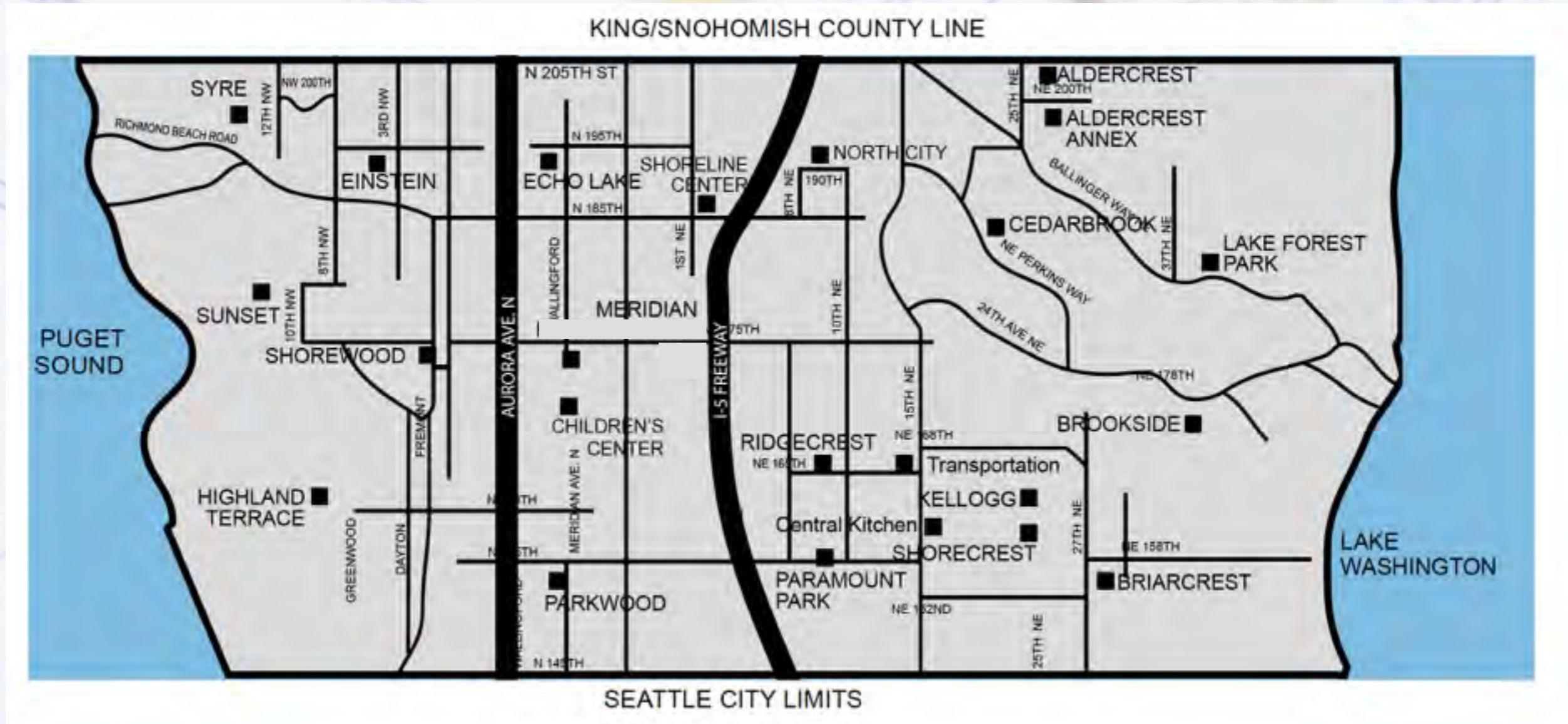
Bonds are for Building

- Bonds fund the building and modernization of schools
- Bonds are financed over a long period of time—typically 15 or 20 years
- Bond dollars cannot pay for programs or day-to-day support and expenses
- 60+ percent voter approval to pass

Levies are for Learning and Student Activities

- Classroom support
- Student programs
- Regular ongoing maintenance of facilities
- Technology
- Transportation
- 50+ percent voter approval to pass

Our Facilities and Land Bank



2010 Bond Projects

\$150 million bond to rebuild Shorewood and Shorecrest High Schools passed with a 62.5 percent approval rate.

Shorewood High School



2010 Bond Projects

\$150 million bond to rebuild Shorewood and Shorecrest High Schools passed with a 62.5 percent approval rate.

Shorecrest High School



Research and Planning Meetings

Board Meetings w/ Future Shoreline Reports

- 10/20/14** School Capacity Report
- 4/27/15** Enrollment Study
- 7/15/15** Building Condition Report
- 9/28/15** Next Steps
- 1/11/16** Capacity and Study Recommendation
- 5/9/16** Instructional Program Planning Report
- 6/6/16** Facility Planning Report
- 6/20/16** Facility Planning Bond Recommendation
- 9/26/16** Bond Resolution First Reading
- 10/10/16** Bond Resolution Approved

Instructional Meetings

- 2/23/16**
- 3/8/16**
- 3/15/16**
- 3/22/16**
- 3/29/16**
- 4/12/16**

Facilities Meetings

- 3/30/16**
- 4/6/16**
- 4/13/16**
- 4/27/16**
- 5/11/16**

**VOTE ON
FEB. 14, 2017**

Instructional Program and Configuration Considerations

Instructional Program Planning Committee

During the 2015-2016 school year Shoreline Public Schools made a commitment to evaluate future instructional program configurations to meet the needs of students.

To accomplish this goal, the Instructional Program Planning Committee (IPPC) was formed to make recommendations to the Superintendent and her cabinet. The specific topics that the committee addressed were:

- Preschool configuration
- Highly Capable programs configuration
- Grade band configuration



IPPC Recommendations

Early Learning Programs

The IPPC recommended the district's early learning programs (tuition based, Head Start and Early Childhood Education) be co-located on a single site for the purpose of increasing capacity, learning opportunities and school readiness for Shoreline students.

Grade Band Configuration

The IPPC recommended that a 6/7/8 middle school configuration would best support the instructional and social-emotional needs of Shoreline students. Additionally, they recommended careful study and involvement of stakeholders in shaping best practices for Shoreline 6/7/8 middle school models.

Facilities Planning Committee

Charge of the Committee

Gain an understanding of:

- Enrollment: Trends, Long-Range Projections, School Capacity, Potential for Class Size Reduction Opportunities
- Building Condition Data
- Financing School Construction
- Instructional Program Planning Committee Recommendations

Develop a Facilities Recommendation



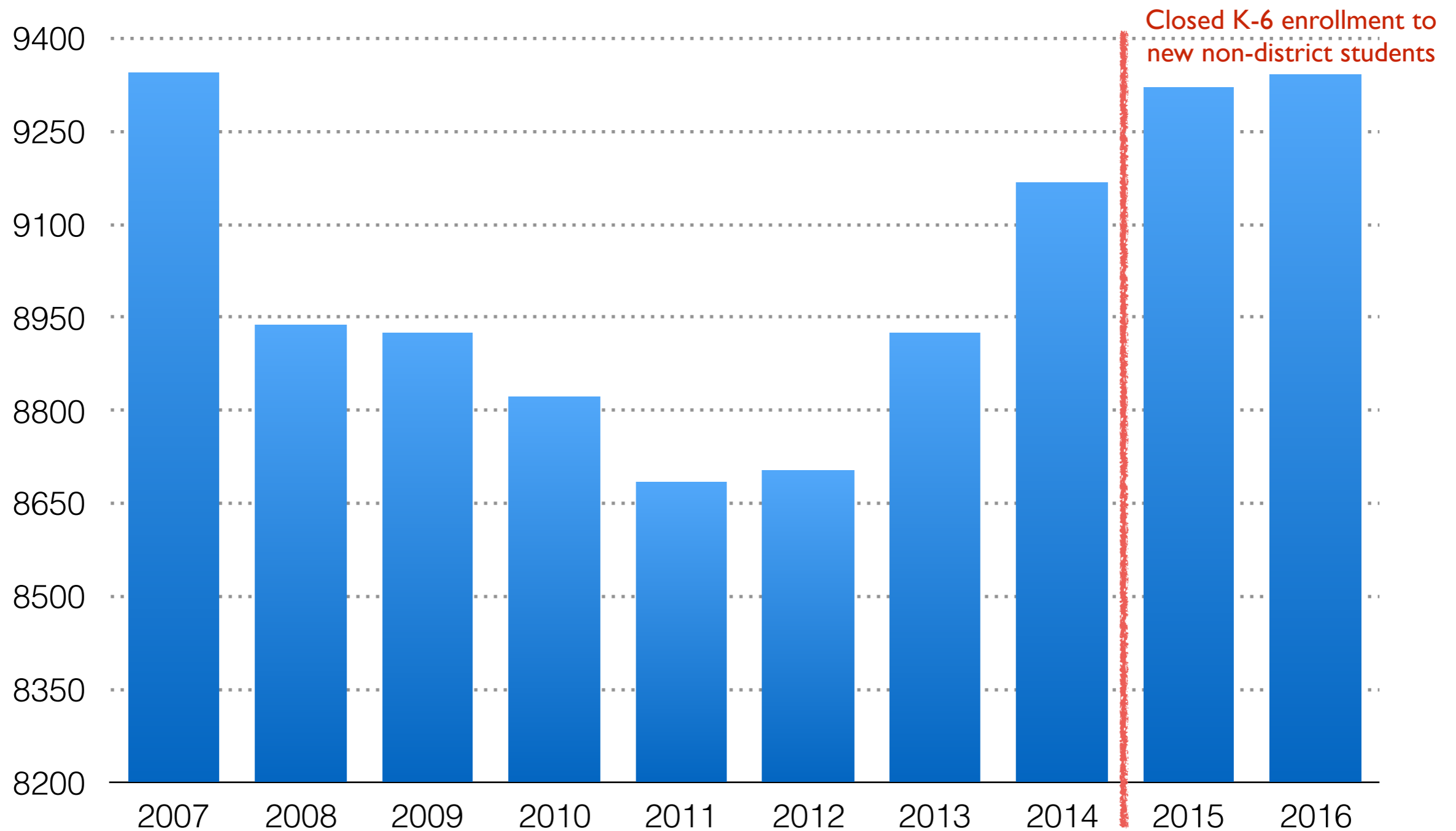
Facilities Planning Committee

Committee Members

1. Parents/Community: Silje Sodal, LFP
2. Parents/Community: Brad Sheffield, HT
3. Parents/Community: Linda Tsai, HC/SY
4. Parents/Community: Mark Speidel, K-8
5. Parents/Community: Jaime Lopez, EMS/SY
6. Parents/Community: Rachel Belfield, SCC
7. Parents/Community: Cindy Pridemore
8. MS Principals: Rebbecah Emanuel, EMS
9. MS Principals: Lisa Gonzalez, KMS
10. EL Principals: Ann Torres, PW
11. EL Principals: Aimee Miner, LFP
12. SCA: Don Dalziel, Athletics etc.
13. SCA: Gene Wachtel, CTE
14. SCA: Jenny Parks, SCC
15. SCA: Hillery Clark, ECE/Head Start
16. SCCA: Pam Wright, SC
17. SEA: Julie Fredrickson, SY (6th)
18. SEA: J.T. Maschman, EMS (SpEd)
19. SEA: Pam Simpson, KMS (Math)
20. SEA: Lyn Sherry
21. SESPA: Heather Hahn, BC
22. SESPA: Leslie Buchanan, EMS
23. SEIU: Dan Setterberg, Transportation
24. SEIU: Dan Prince, EMS Custodian
25. Maintenance: Gene Erikson
26. Equity: Tanisha Brandon-Felder
27. PIO: Curtis Campbell
28. Facilities: Dan Stevens
29. District Administrator: Brian Schultz
30. District Administrator: Marla Miller

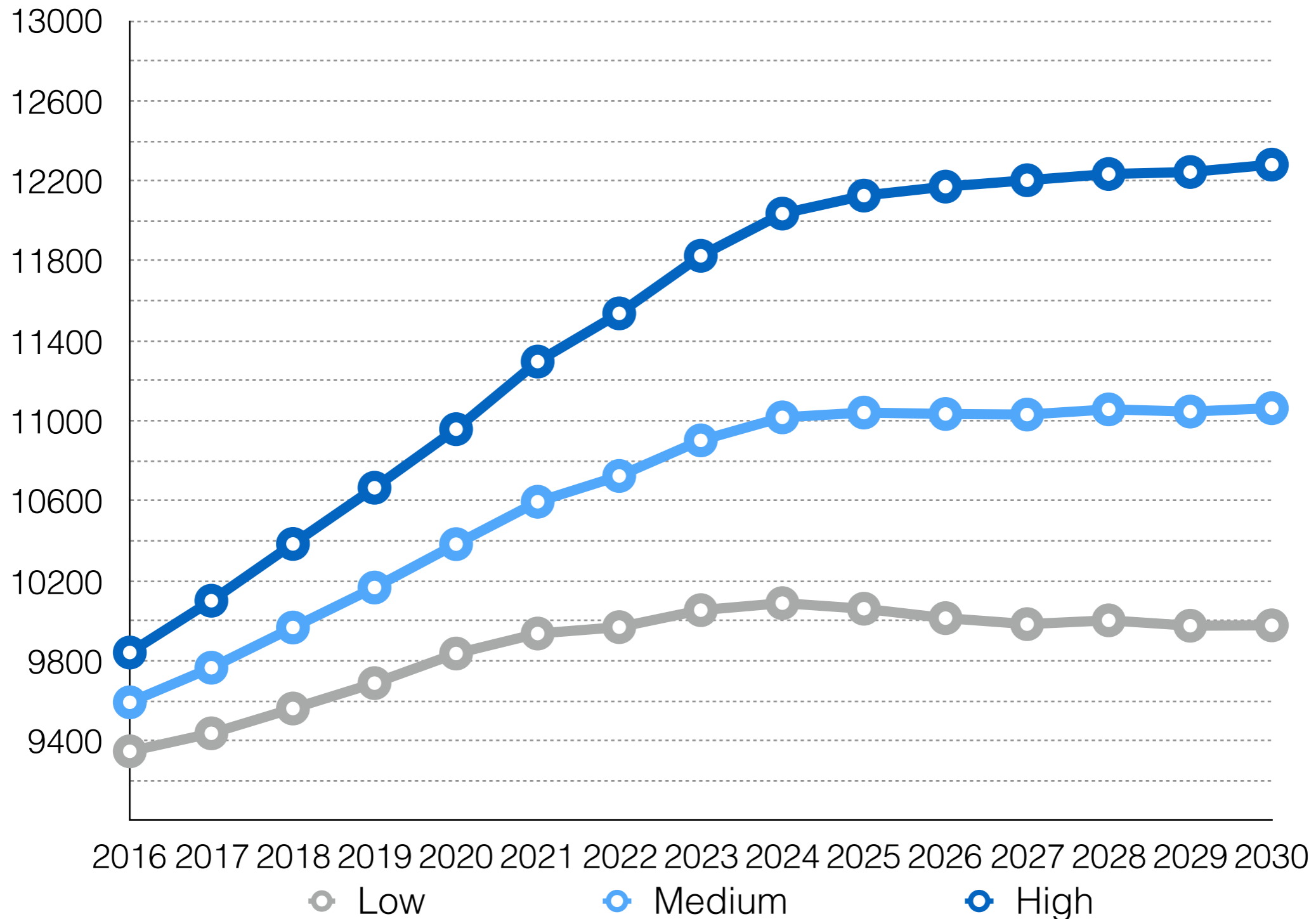
We Are Growing

Enrollment Trend 2007-2016 (Headcount)



We Are Growing

Enrollment Projections 2016-2030



Source: Dr. Les Kendrick 2015

We Are Growing

2016-17 Elementary Classroom Capacity

School	Capacity
Meridian Park	82%
Brookside	92.2%
Lake Forest Park	92.9%
Ridgecrest	99%
Highland Terrace	99%
Syre	99%
Briarcrest	100%
Parkwood	100%
Cascade K-8	102%
Echo Lake	110%
Total	96.4%

Purpose of Feb. 14, 2017 Bond

Alleviate elementary overcrowding and prepare for state-funded class size reductions

Provide learning environments to support student achievement

Expand and enhance early learning opportunities

Design new buildings to enhance school safety and security

Proposed Projects

Rebuild Kellogg Middle School



Built 1952, Remodeled 1986

Rebuild Einstein Middle School



Built in 1968, Remodeled 1992

Construct an Early Learning Center at SLCC Site



Built 1956

Rebuild Parkwood Elementary School



Built 1960, Remodeled 1987

Shoreline Children's Center

Building Conditions



Fiberglass clerestory (natural light) panels

- Drainage – periodic backups and localized flooding
- Roof – poor drainage, excessive weathering
- Windows – fiberglass clerestory panels at gym in poor condition
- Exterior Walls – brick cracking in some locations, poor siding
- Exterior Windows – single pane glazing, rotting wood frames
- Exterior Doors – not ADA compliant
- Interior Doors – some sticking, not ADA compliant
- Flooring – original tile in poor to fair condition
- Ceilings – original tiles stained
- Plumbing – poor piping, slow drainage, discolored water
- Ventilation – poor to none at most spaces
- Electrical – system undersized
- Worn out casework - splinters
- Kitchen – most equipment not used, installed residential equipment



Failing siding and roofing



No ADA Hardware



Exposed wood



Single glazed, sill rot

Built in 1956

Source: Brian Poppe, HPK

Parkwood Elementary

Building Conditions



Electrical – not enough outlets

- Site – some settlement at utility pipes
- Site drainage – inadequate during heavy rains
- Windows – single pane glazing
- Floors – some slab cracking
- Floors – carpet needs replaced
- Doors – gym partition wearing out, some doors not ADA
- Fire Suppression – partial system, incomplete coverage
- Ventilation – poor ventilation and cooling
- HVAC Controls – mismatched systems, some not working
- Plumbing – broken fixture, rusty water at kitchen, slow drains
- Normal wear and tear: doors, hardware, furnishings, kitchen



Plumbing & wall cracks



Single panes



Worn carpet



Failing gym partition

Built in 1960, Remodeled in 1987

Source: Brian Poppe, HPK

Einstein Middle School

Building Conditions



Masonry walls – poor insulation

- Masonry walls – poor insulation
- Windows – single pane glazing, leaking at some windows
- Roofing – worn surfacing
- Flooring – cracking/buckling at science buildings
- Wall Finishes – worn and flaking
- Voice Equipment – obsolete, static
- Kitchen – cooler door warped, oven controls are an issue



Roofing – surface wearing out



Ceilings – water stains



Floors – cracks and surface wear

Built in 1968, Remodeled 1992

Source: Brian Poppe, HPK

Kellogg Middle School

Building Conditions



Art Building – window panels

- Nearly every ceiling has stains or signs of repairs
- Windows – single pane glazing, leaking at some windows
- Roofing – worn surfacing, signs of leakage
- Windows – fiberglass panels at art building not secure
- Windows – leaks at some windows, some single glazed
- Exterior Walls – cracking and peeling at plaster
- Exterior Walkways – exposed wood structure rotting
- Wall Finishes – worn and flaking
- Floors – cracking through flooring at commons/cafeteria
- Kitchen – cooler door warped, oven controls are an issue
- Heating – boiler is undersized, room controls are an issue
- Storm Drainage – water backs up through asphalt by boiler



Roofing



Roof leaks



Pipe leaks



Roof leaks



Walkways



Plumbing

Built in 1952, Remodeled 1986

Source: Brian Poppe, HPK

Proposed Project Phasing

2016-2017

1

- North City Renovated as a Transition School
- Early Learning Center (ELC) Design Phase

2017-2018

2

- Children's Center, Early Childhood Education and Head Start at North City
- ELC Construction
- Parkwood, Einstein, and Kellogg Design

2018-2019

3

- Early Learning Center Opens
- Parkwood at North City
- Parkwood, Einstein, and Kellogg Construction

2019-2020

4

- Parkwood Reopens
- Einstein and Kellogg Construction Continues

2020-2021

5

- Einstein and Kellogg Reopen

Proposed Bond Costs

Total Bond Revenue Requested

\$250 Million
Local Property Tax

+

Estimated 10%
State Match

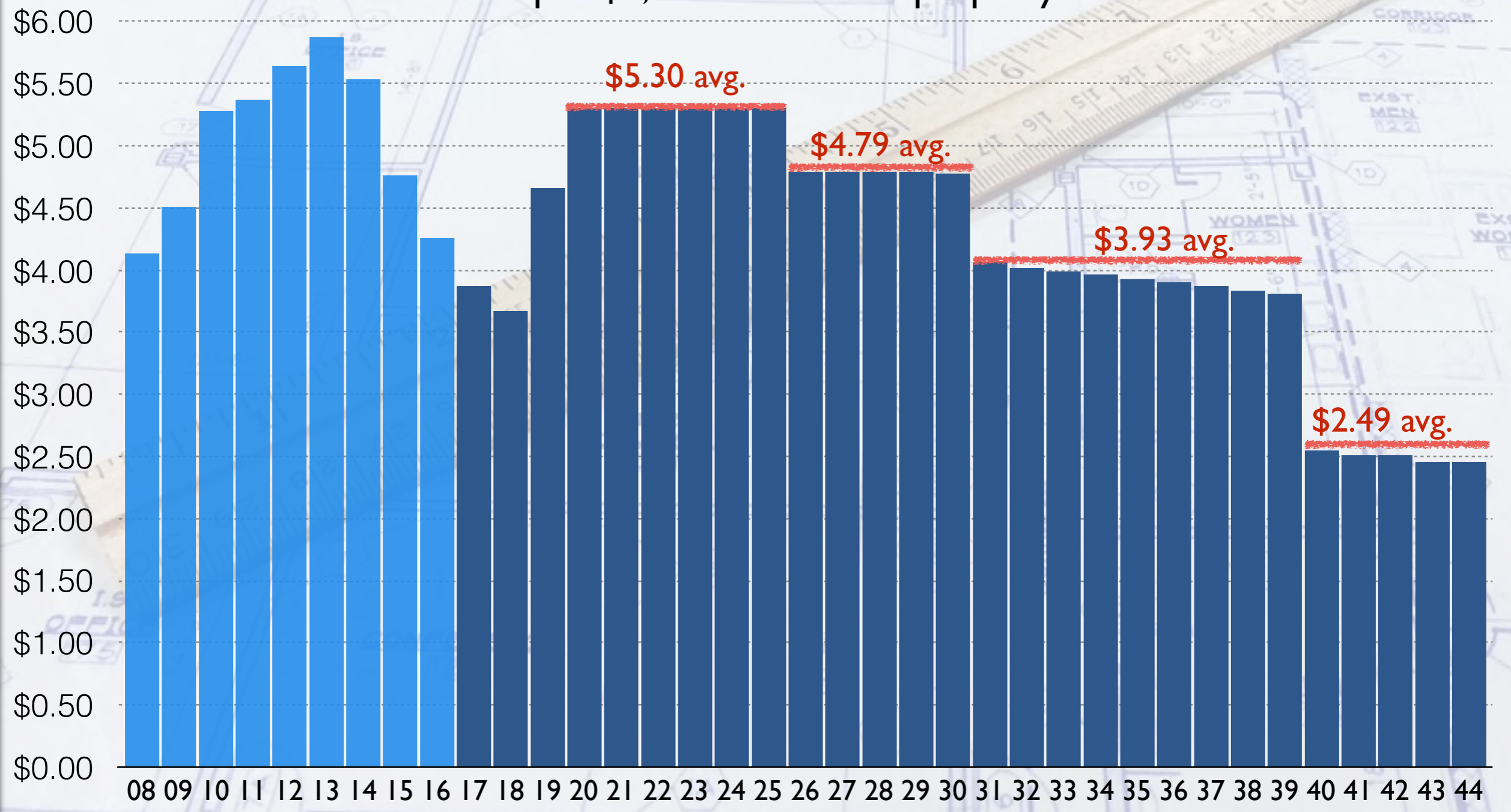
Source: OSPI

Total School Tax Rates

Actual 2008-2016 School Tax Rates

Projected 2017-2044 School Tax Rates if Bond Passes

Dollars per \$1,000 of assessed property value



Calculating Your School Tax Rates

2020-2025 Estimated Average

(Assessed Home Value) X 0.00530 = Annual School Tax

2026-2030 Estimated Average

(Assessed Home Value) X 0.00479 = Annual School Tax

2031-2039 Estimated Average

(Assessed Home Value) X 0.00393 = Annual School Tax

2040-2044 Estimated Average

(Assessed Home Value) X 0.00249 = Annual School Tax

An architectural floor plan of an office building, overlaid with a wooden ruler. The plan shows various rooms including an I.S. Office (126), I.S. Office (175), Conference (127), Distance Learning (124), Video Control (125), Women (123), Men (128), and Restrooms (122, 127). A ruler is placed diagonally across the plan, showing measurements in inches and centimeters. The ruler is marked from 0 to 18 inches. The text "Any Questions?" is written in a blue, stylized font across the center of the image.

Any Questions?

Remember to Vote by Feb. 14, 2017