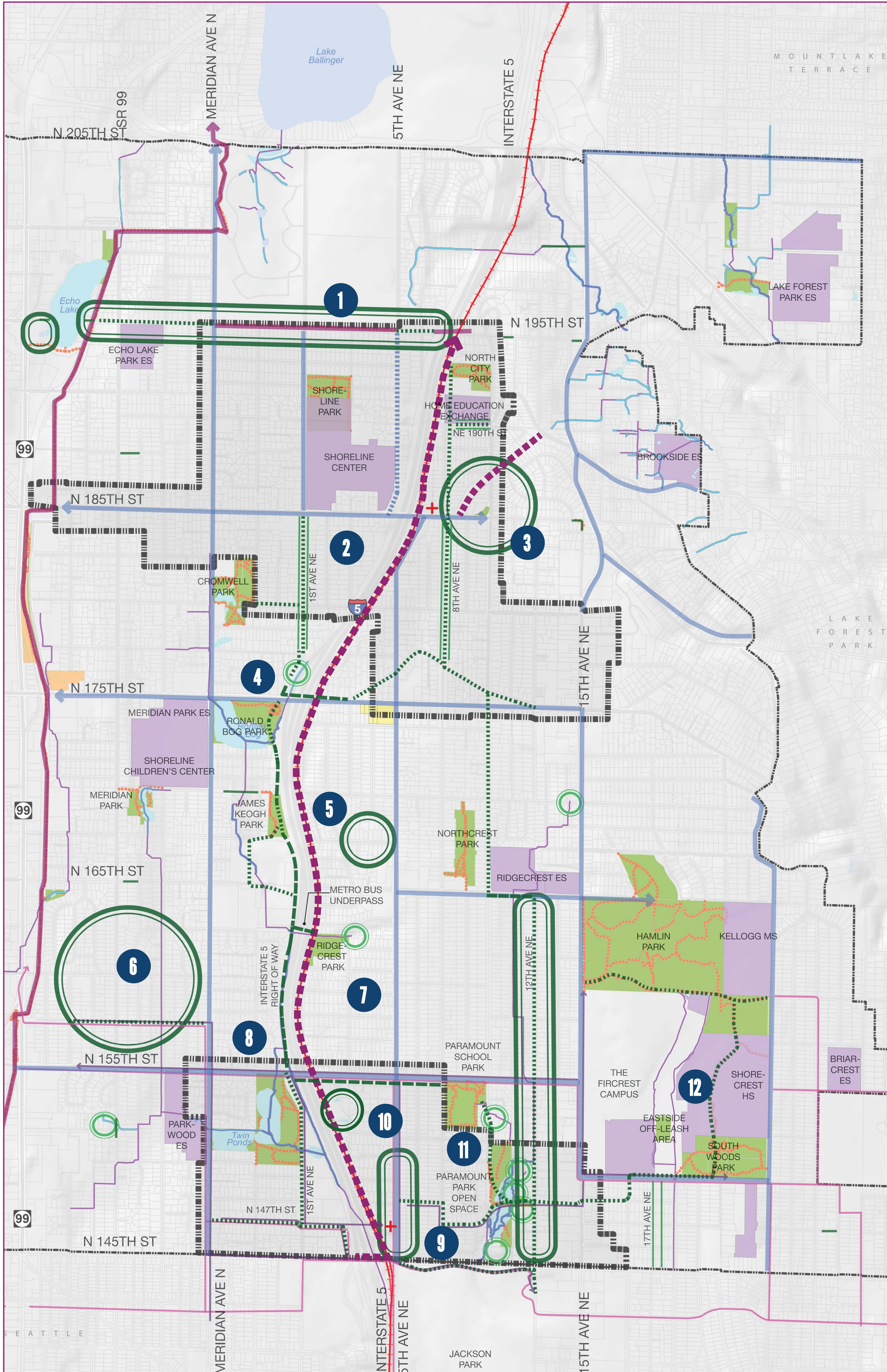


SECURING OUR FOUNDATION SHAPING OUR FUTURE

SHORELINE'S PARKS, RECREATION & CULTURAL SERVICES

PARK AND OPEN SPACE OPPORTUNITIES FOR LIGHT RAIL STATION SUBAREAS - DRAFT



LEGEND

- EXISTING CONDITIONS**
- Parks
- Tax Parcels
- City of Shoreline
- Stream (contains fish habitat)
- Stream (perennial non-fish habitat)
- Stream (piped)
- Generalized Wetland Location
- Libraries
- Schools
- Shared Use Paths
- Adopted 185th Light Rail Station Subarea Boundary
- 145th Light Rail Station Subarea Study Area Boundary
- Green Streets
- Unimproved Rights of Way
- Light Rail Stations
- PARKS AND OPEN SPACE OPPORTUNITIES**
- Park Acquisition/Expansion Opportunity Areas
- Area of interest for Thornton Creek Alliance Acquisition
- CONNECTIONS FOR RESIDENTS WALKING AND BIKING BETWEEN PARKS**
- Planned Bike Lanes per City Transportation Master Plan
- Neighborhood Greenways Opportunity (All Ages and Abilities Active Transportation Connections between Parks)
- All Ages and Abilities Connection on High-Speed Streets Opportunity
- Off-Street/ Through-Park Pedestrian/Bicycle Connection Opportunity (part of the Neighborhood Greenway network)
- Parks Trails
- 145th Street Station Area Green Network
- 145th Street Corridor Plan Off-Corridor Bike Network
- Shared Use Path Opportunity along Proposed Light Rail Alignment

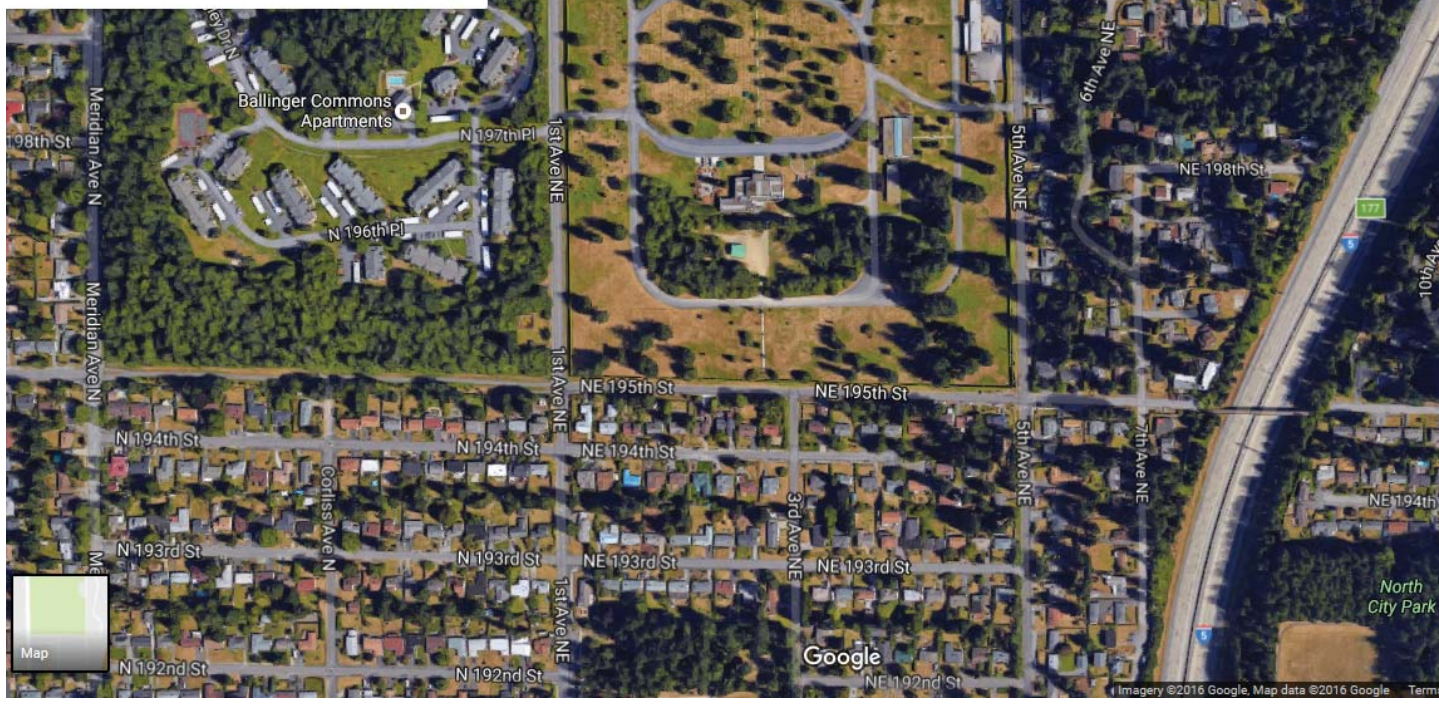


SECURING OUR FOUNDATION SHAPING OUR FUTURE

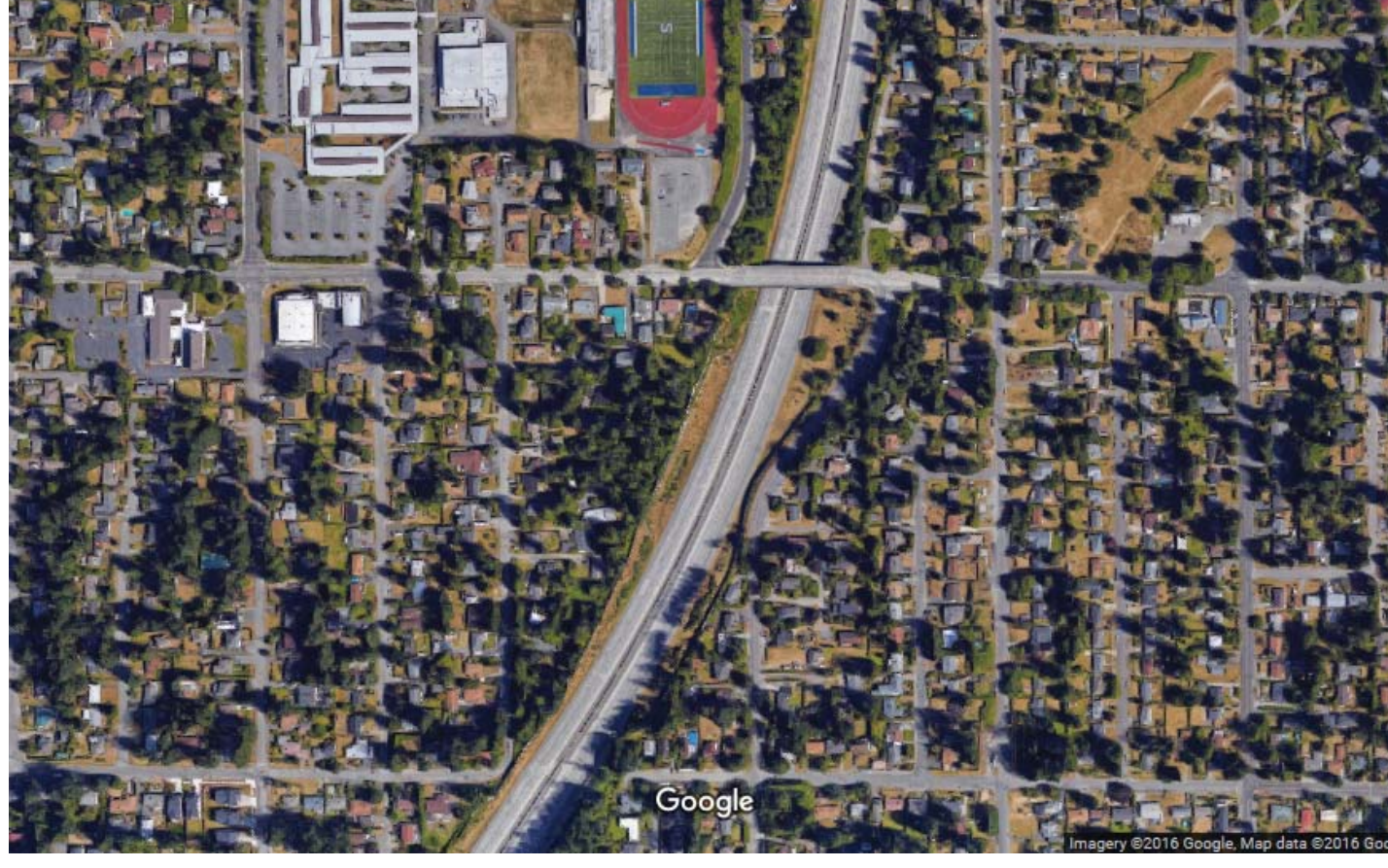
SHORELINE'S PARKS, RECREATION & CULTURAL SERVICES

KEY OPPORTUNITIES FOR LIGHT RAIL STATION SUBAREAS - DRAFT

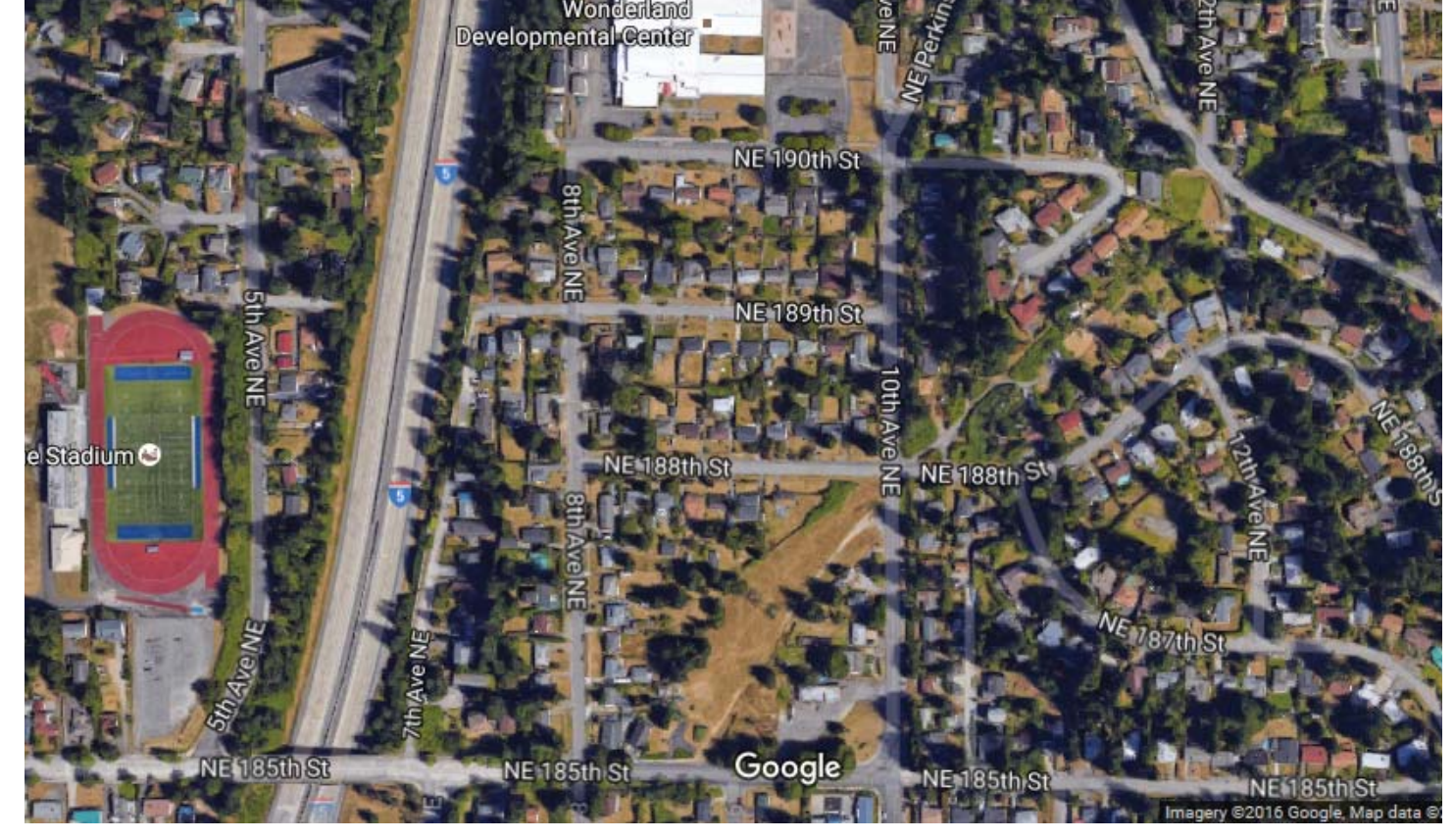
This is an unprioritized list of key opportunities.



1 Improve connectivity, safe routes to school and neighborhood recreation opportunities along the 195th Street corridor, including connections to the green space at the south end of Ballinger Commons.



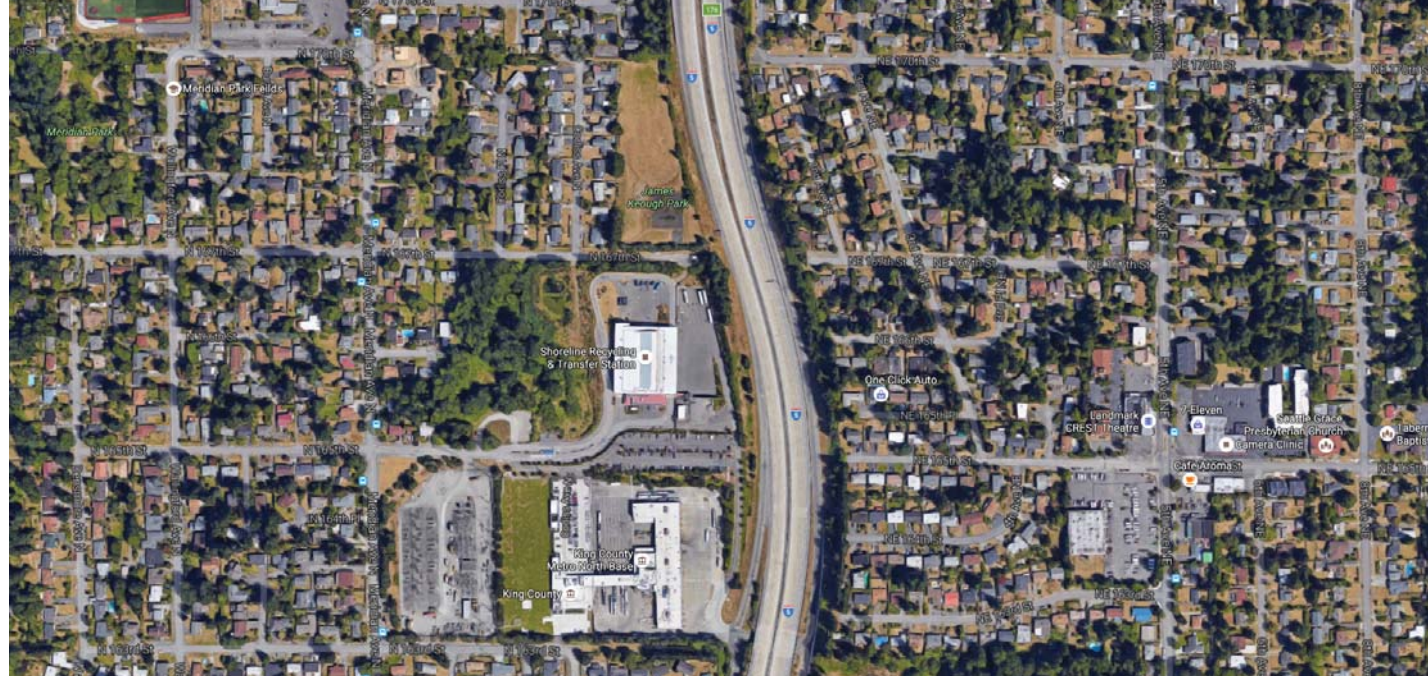
2 Expand/improve connections to open space property along Interstate 5.



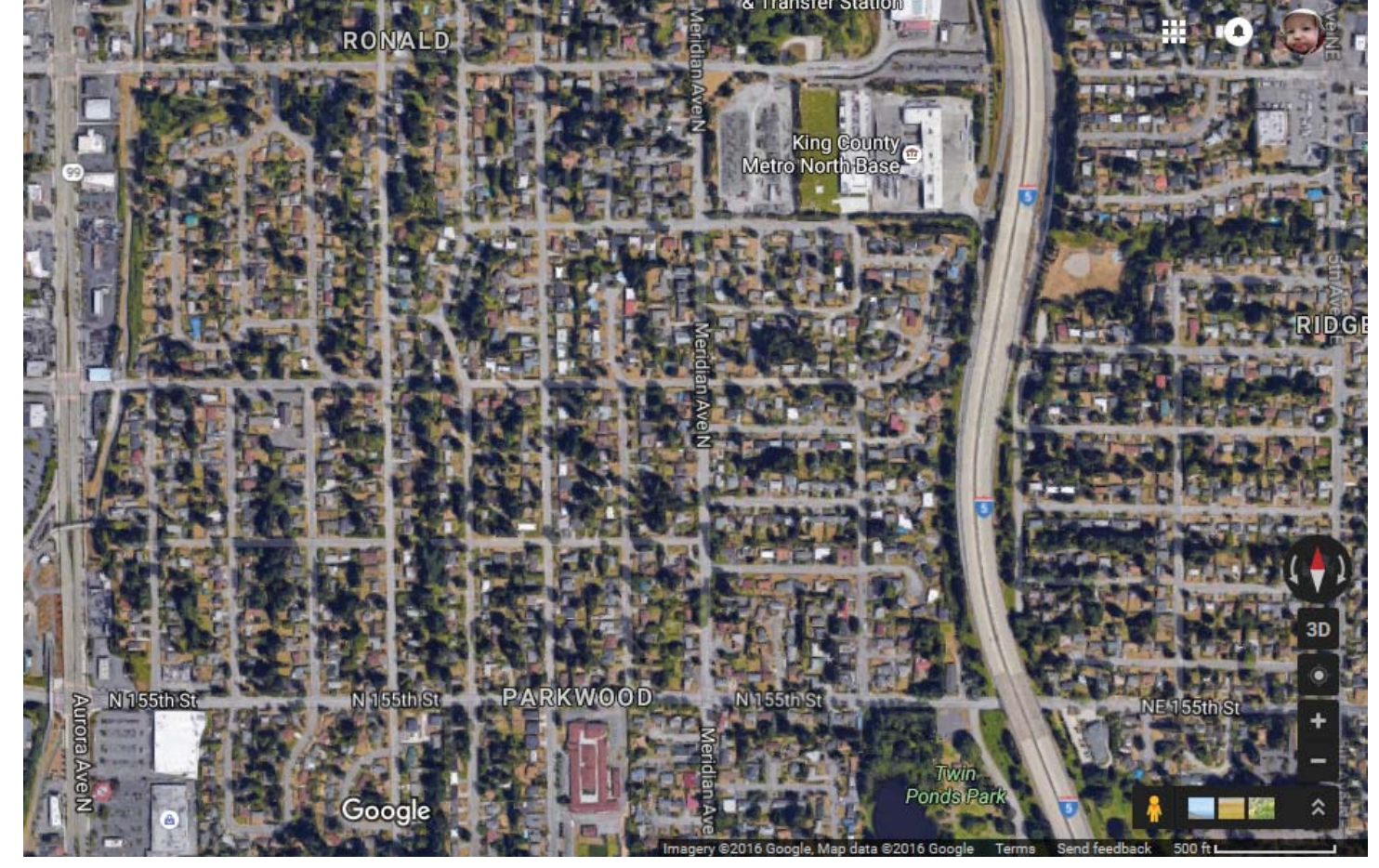
3 Improve connectivity, safe routes to school and neighborhood recreation opportunities on the east side of I-5 as land uses intensify.



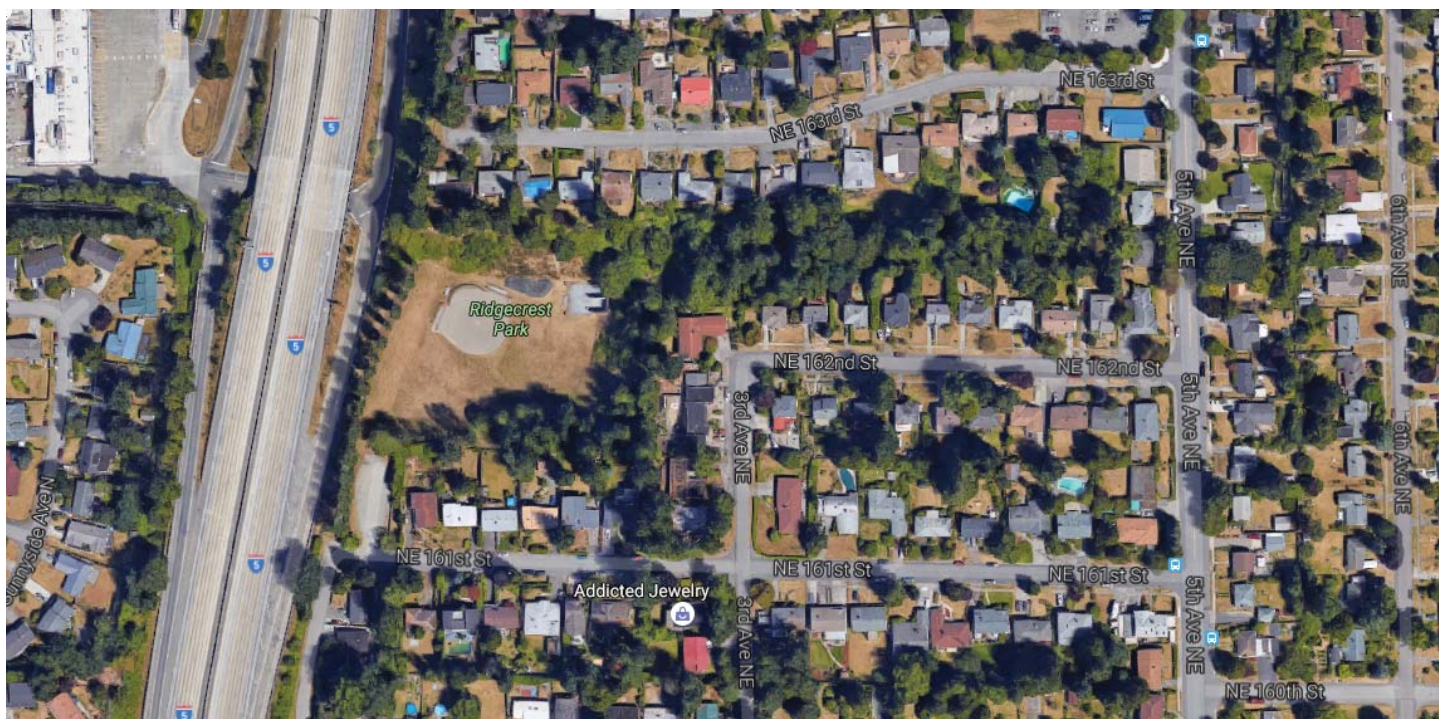
4 Increase connectivity and improve water quality near N 175th St/Ronald Bog.



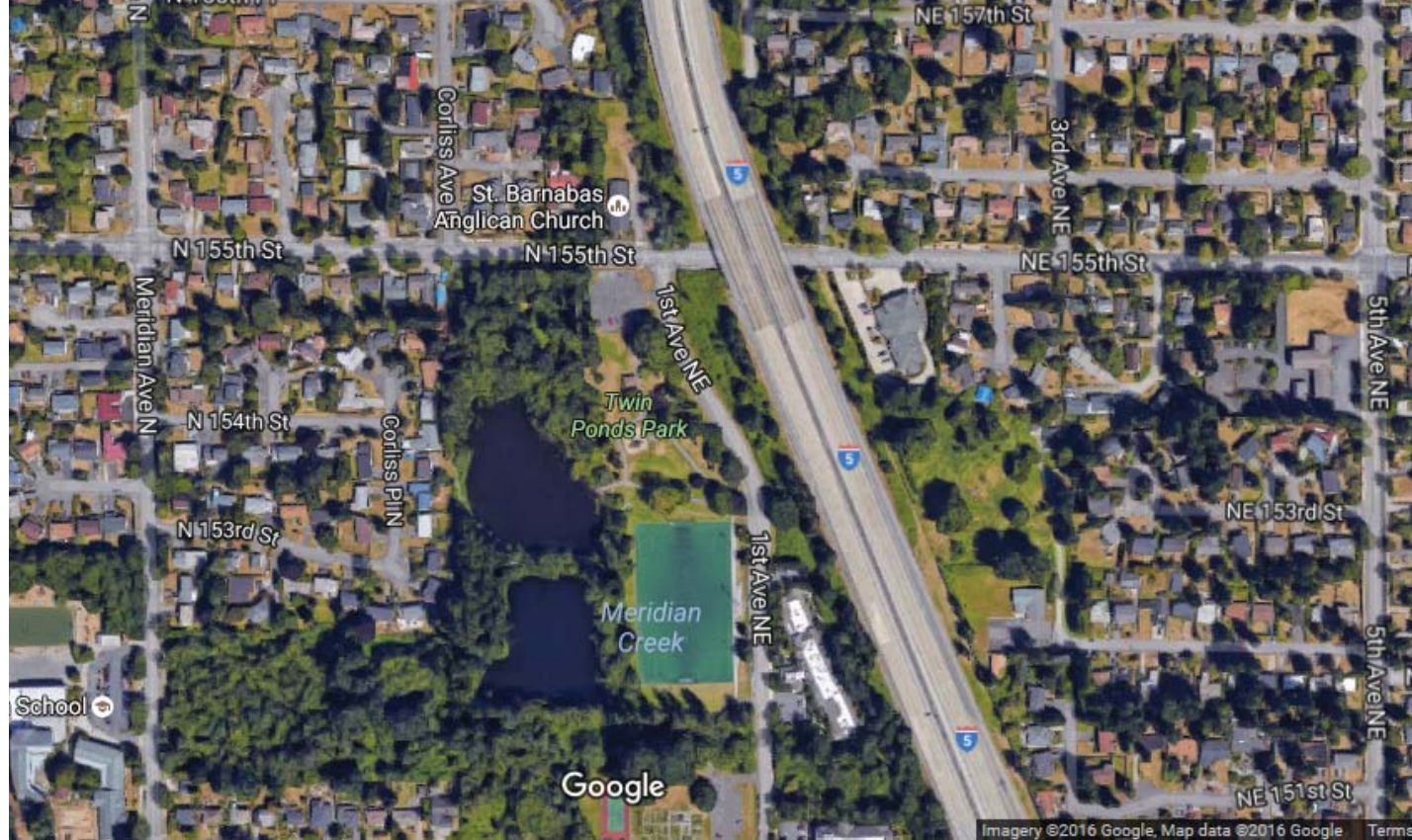
5 Buffer I-5 air and water pollution through berming, conifers and bioretention facilities and activate Keogh Park. Improve connections through King County properties and under Interstate 5 at the Metro base.



6 Find opportunities for increased play and/or active recreation in this area of the city.



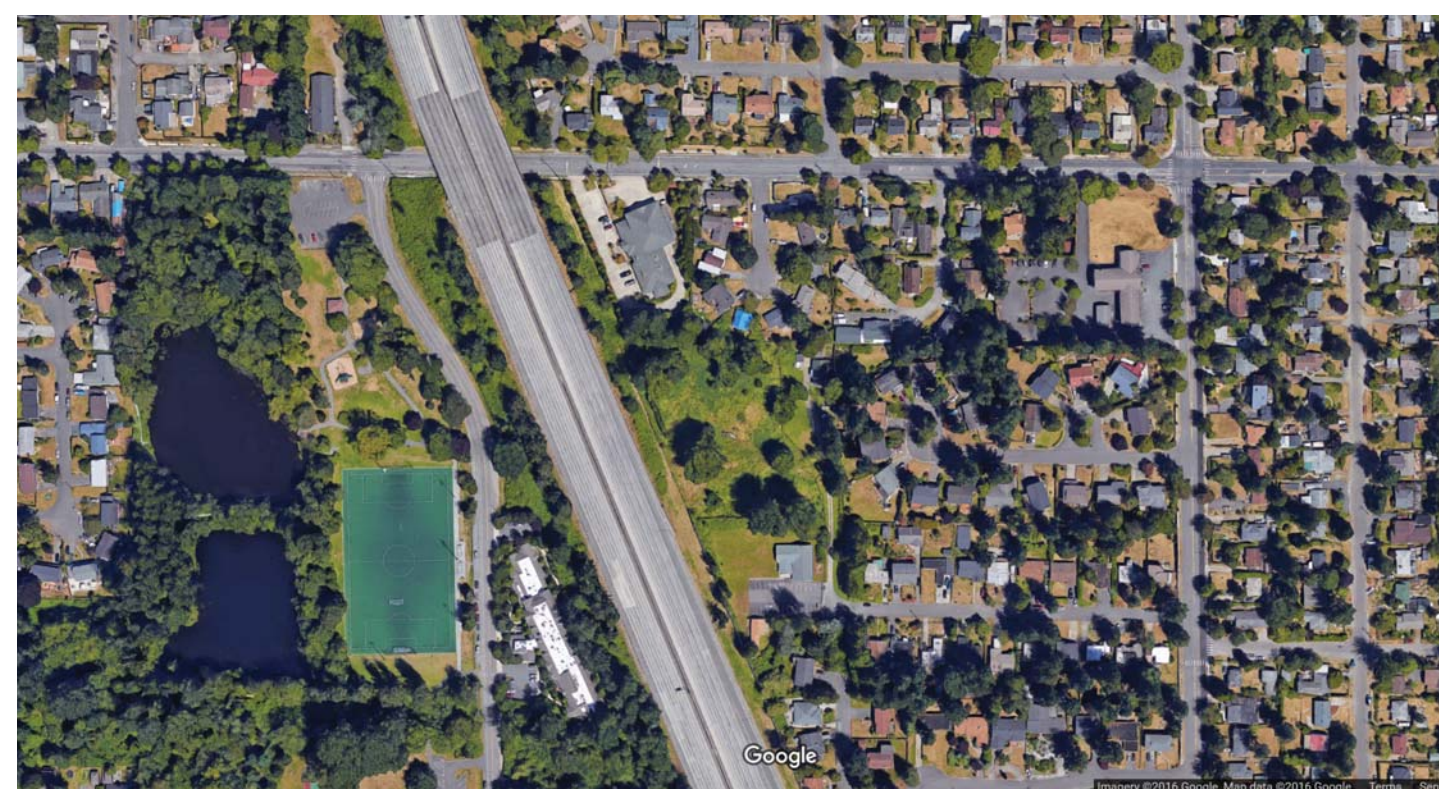
7 Protect headwater wetlands, buffer residents from Interstate 5 air, noise and water pollution through berming, conifers and bioretention facilities at Ridgecrest Park. Improve active recreation opportunities.



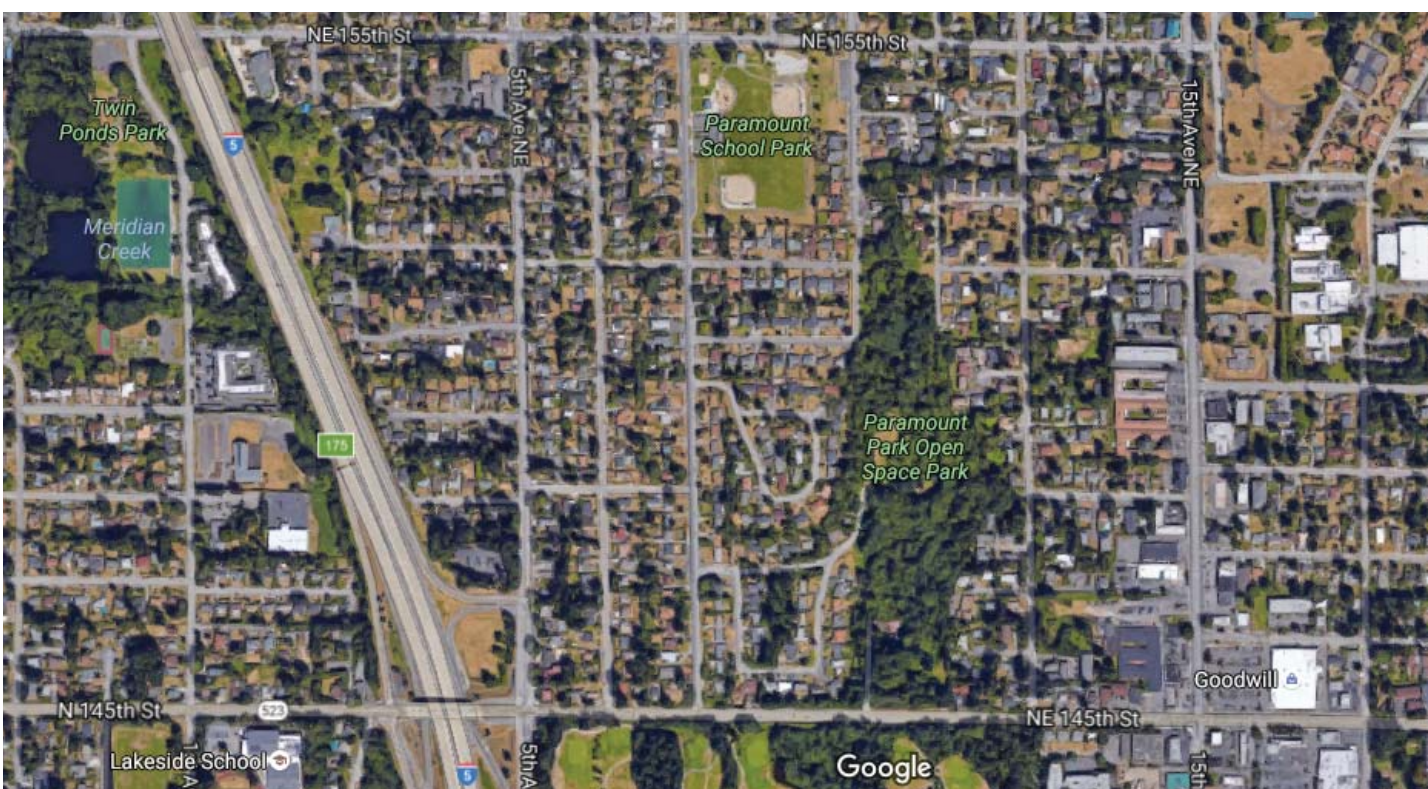
8 Improve water quality upstream of Twin Ponds through mobility/water quality improvements.



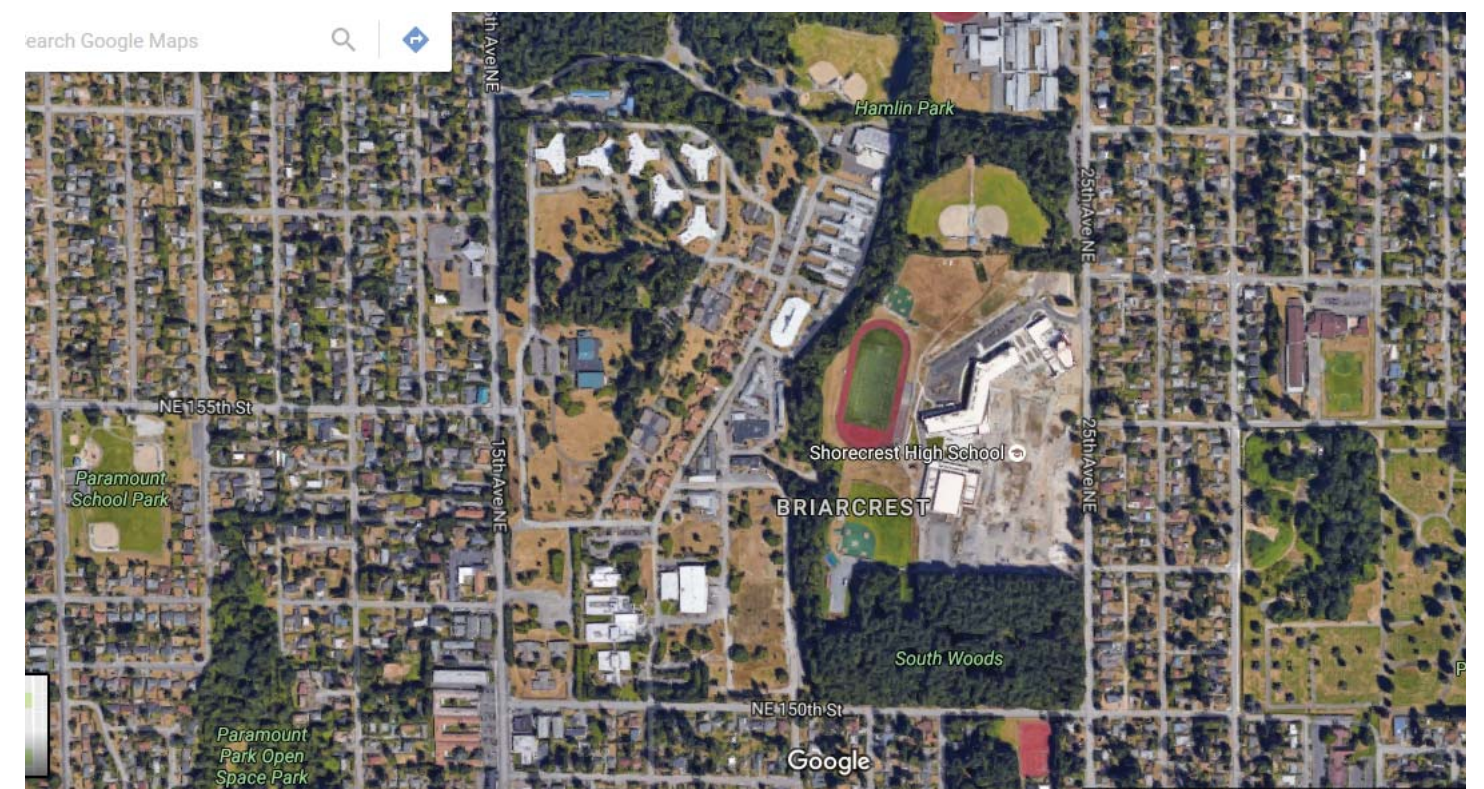
9 Create art/ placemaking opportunities, ped/ bike connections and neighborhood open space near the light rail station as land uses intensify.



10 Look for opportunities to increase open space opportunities near the Fire Station and wetlands north of NE 152nd Street.



11 Enhance natural area and pedestrian/bike connectivity through Paramount School Park and Paramount Open Space to the light rail station.



12 Increase activation, wayfinding and natural resource interpretation through Hamlin, South Woods and, potentially, The Fircrest Campus. Align with Master Plan.

SECURING OUR FOUNDATION SHAPING OUR FUTURE

SHORELINE'S PARKS, RECREATION & CULTURAL SERVICES

CONNECTION TYPOLOGIES

PARKS PROGRAMS



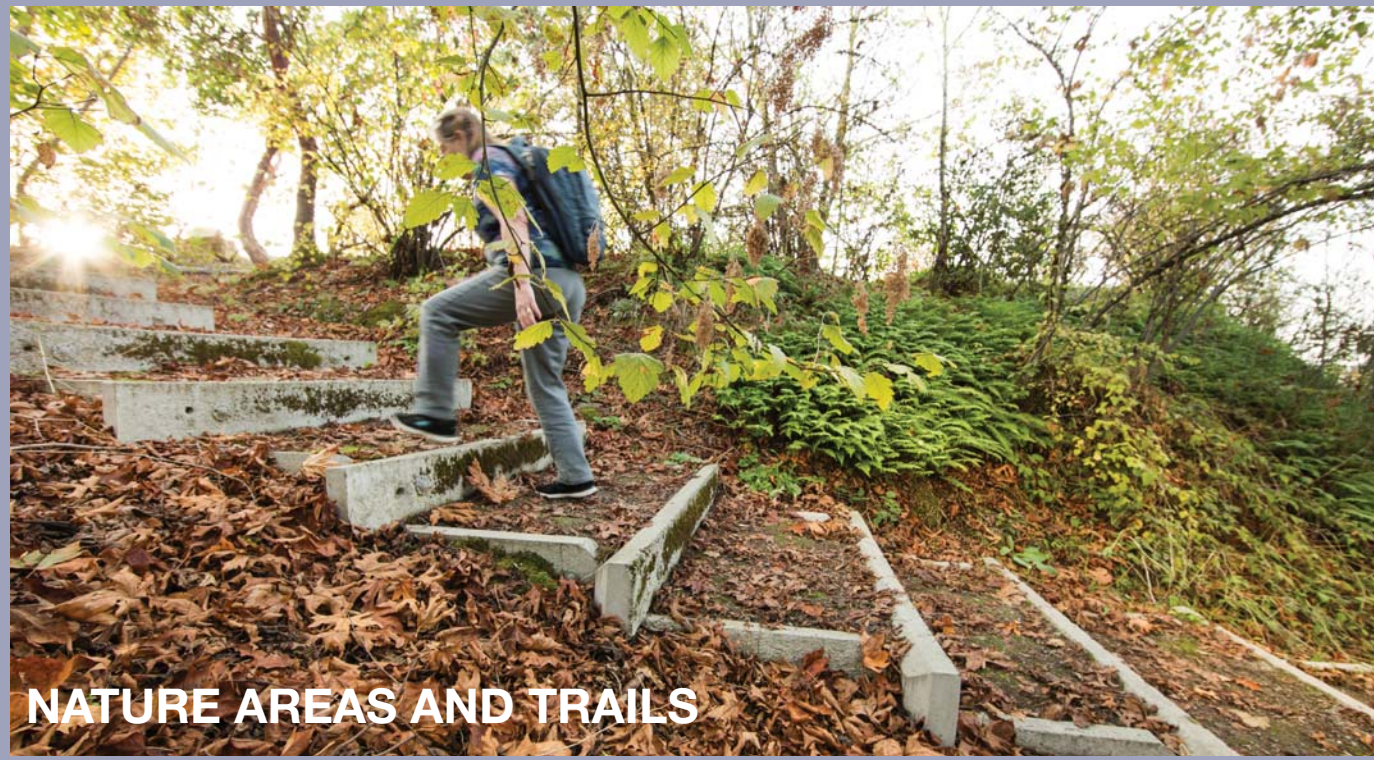
COMMUNITY GARDENS



NATURAL PLAY AREAS



PLAZAS AND POCKET PARKS



NATURE AREAS AND TRAILS



OFF LEASH AREAS



SPRAY PARKS

GREEN STREETS



ALL AGES AND ABILITIES NETWORK



STREETS AS PARKS



NEIGHBORHOOD GREENWAYS (SIDEWALKS, TREES, TRAFFIC CALMING ON LOCAL STREETS)



SHARED USE PATHS



HIGH-SPEED STREETS



HIGH-SPEED STREETS