

From: [Debbie Tarry](#)
To: [Jesse Salomon](#); [Carolyn Wurdeman](#)
Cc: [Randy Witt](#); [Tricia Juhnke](#)
Subject: RE: Budget ?
Date: Monday, September 19, 2016 1:01:21 PM
Attachments: [20160725 SR - Aurora Project Update - Attachment B.pdf](#)

Jesse -

The estimate is that this change would reduce our current landscape contract cost by approximately \$3,400/year. Of course this may change as we go out to bid on a new contract - moving the savings up. Regardless, I think a bigger operational issue, which doesn't have a direct dollar tie, is the impact that weeding in these areas has on traffic flow on Aurora. Usually requires at least one lane blocked off on Aurora as workers are in these narrow areas. Attaching pictures of the type of areas we are talking about (from the July 25 Council meeting).

Debbie Tarry
City Manager
City of Shoreline
17500 Midvale Ave N.
Shoreline, WA 98133

-----Original Message-----

From: Jesse Salomon
Sent: Sunday, September 18, 2016 1:01 PM
To: Debbie Tarry; Carolyn Wurdeman
Subject: Budget ?

Projected long term savings amount?

Aurora Median Retrofits (\$175,000): This project will modify several median areas to replace cobbles and vegetation with stamped concrete or other mechanisms that will reduce the cost of maintenance and reduce safety concerns for maintenance.

Jesse Salomon, Councilmember
City of Shoreline
Jsalomon@Shorelinewa.gov
(206) 396-5807

Sent from my iPad

Examples of Existing Conditions in the Aurora Landscaping

Example of narrow medians with cobblestone and landscaping and with stamped pavement treatment.

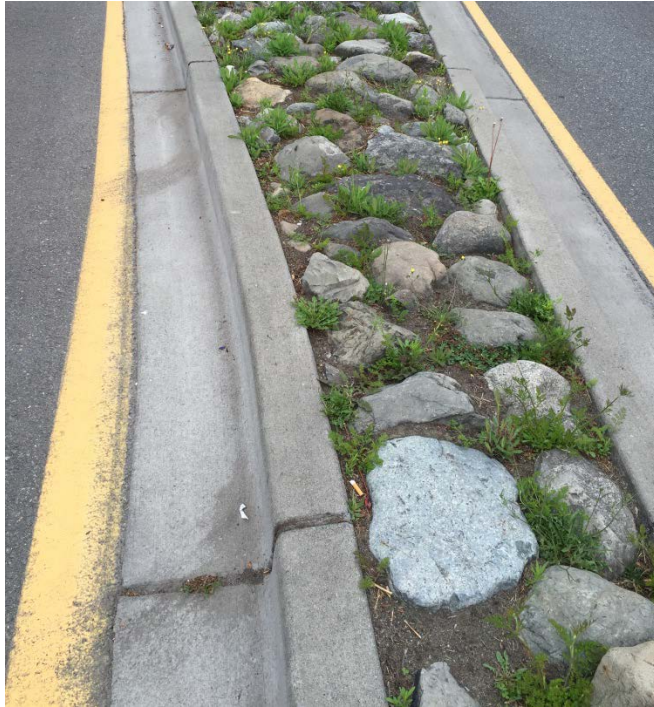


Photo 1

Example of narrow median with cobblestones landscaping and weeds.



Photo 2

Example of a narrow median with a decorative stamped treatment that does not require maintenance.

Example of Drip line and pop-up irrigation systems.



Photo 3
Example of drip line irrigation for corridor landscaping for corridor landscape watering.



Photo 4
Example of pop-up sprinkler for corridor landscape watering.