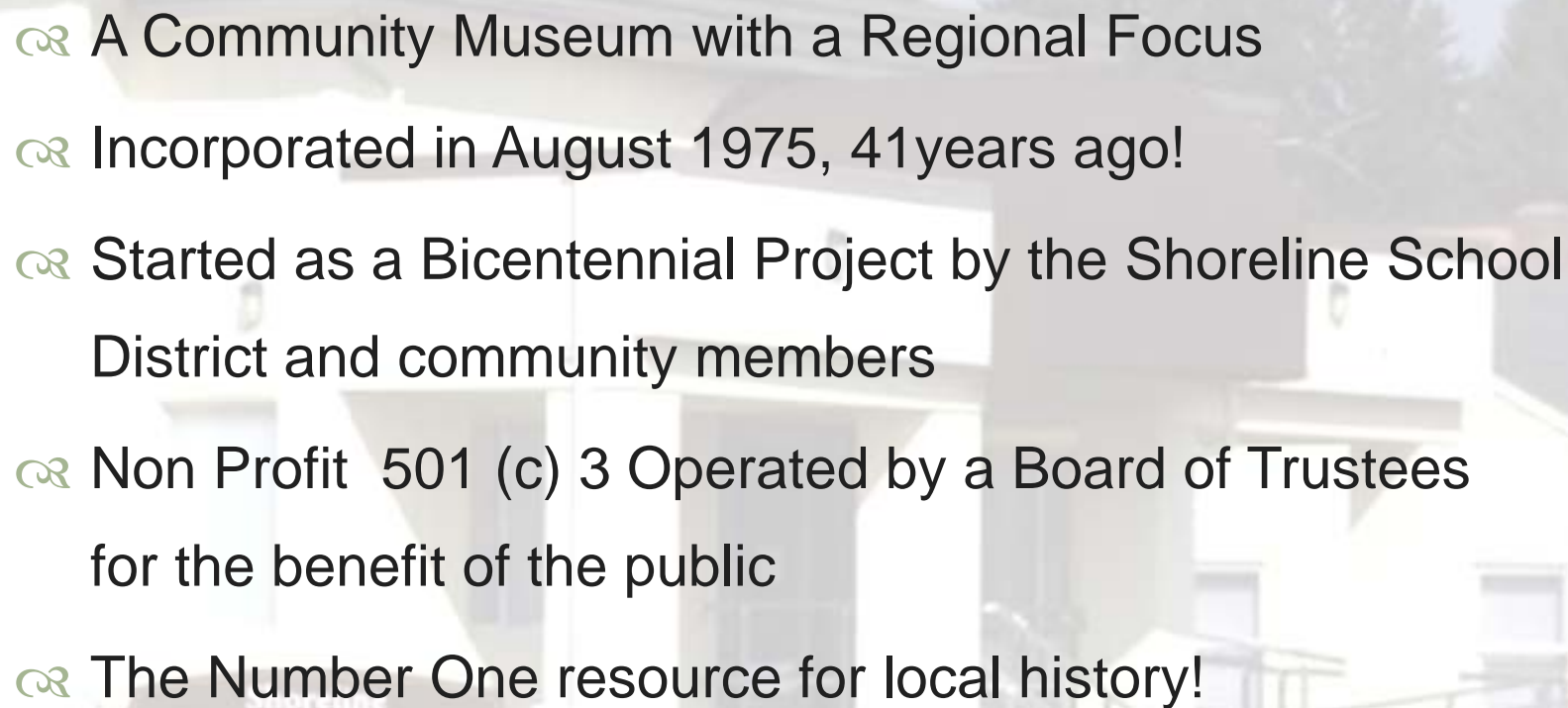




**Shore to Shore and Line to Line:
Linking the Community**

- 
- ❧ A Community Museum with a Regional Focus
 - ❧ Incorporated in August 1975, 41 years ago!
 - ❧ Started as a Bicentennial Project by the Shoreline School District and community members
 - ❧ Non Profit 501 (c) 3 Operated by a Board of Trustees for the benefit of the public
 - ❧ The Number One resource for local history!

Programs



- ❧ **Full-service museum hours – providing in-house programming 30 hours per week, including:**
 - ❧ Exhibits
 - ❧ Tours (with a Passport to History for youngsters)
 - ❧ Monthly Hands-On program for children
 - ❧ Archives Research Center for topics such as historic sites, genealogy, historic environment, cultural heritage, and much more with weekly open hours and availability by appointment
- ❧ Public lecture series, tours and outreach talks to community groups and schools on a variety of history subjects
- ❧ Publications, both on-line and hard-copy on topics of local and regional interest

Exhibits

☞ Long –term exhibits focus on cultural history and the aspects of historical development of the area through the four corridors of transportation:

~*Linking the Community Through Time:*

Connections that Bring Us Together

~*Where in the World?! Cultural Corner and Historic Photo Access*

~*Duwamish Connections*

~*Once Upon A Time in Playland*

~*Video Venue*



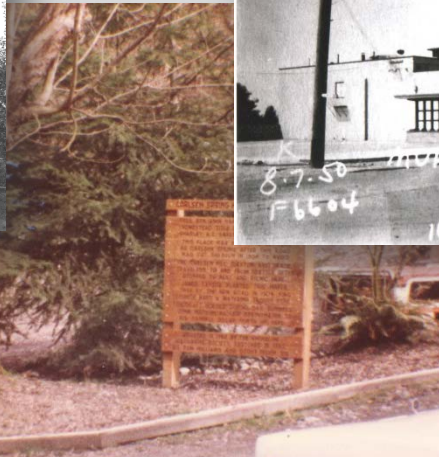
- Annual temporary exhibits spotlight subjects such as our diverse businesses, important people and events, and cultural heritage such as 2015-16's exhibit: ***City with a Past, City with a Future*** highlighting the 20th anniversary of the City of Shoreline.
- Two traveling exhibits circulate to schools, libraries, community centers and other museums
 - ~*Cranberry Place: The Duwamish and Ronald Bog*
 - ~*Once Upon a Time in Playland*



Historic Preservation



- Assist city staff with historic preservation inquiries and with the Historic Sites Inventory
- Assist building owners and neighborhood groups with historical research
- Provide public education about historic preservation



Briar Crest Lodge
Mrs. Thomas J. Cassutt
and
Mrs. Louise R. Shinn
CORDIALLY INVITE YOU TO VISIT
BRIAR CREST LODGE
Victory Way at 155th Street
Chicken Dinners Bridge Teas
Organization Functions
Dinner Dates Frat and Sorority Functions
KENWOOD 7138

SHORELINE
HISTORICAL
MUSEUM



TRILLIUM HERITAGE
AWARD 2016

A COMMUNITY HISTORIC PROPERTY

SHORELINE

2016 will be the 11th Trillium Heritage Award – Here are examples from the Ninth and 10th Annual Trillium Heritage Awards



Right, The Firland Tuberculosis Sanitarium /now the CRISTA Ministries, 19303 - Fremont Ave. N., built in 1914. Below, Masonic Hall, constructed 1922.



Shoreline 2014



Shoreline 2015



Lake Forest Park 2015



North Seattle 2015



2015 Trillium Award Winners Left to Right, Carl and Nancy Hansen of North Seattle, Alison Haig and Robert Haig of LFP, and Ken Callahan and Jerry Parton, members of the Shoreline/Richmond Masonic Lodge.

Monthly Hands-On Days, Group Tours and In-House and Outreach Programs



Shoreline PRCS Day Camp



YMCA Lunch Program



Shoreline Arts Festival



2016 Home Tour coming up in Shoreline! – Haworth/Grace Estate



Richmond Beach and Hillwood Historical Walking Tours (Above, R.B.)



Community Events Partnering

Community events in 2015:
Celebrate Shoreline – Cruise In Car Show,
Concert in the Park Hands-On, Summerset
Arts Festival, Shoreline Farmer's Market,
Shoreline Arts Festival, Solarfest, Richmond
Beach Strawberry Festival



Summerset Arts Festival



Cruise In Car Show



Concert in the Park Hands-On



Arts
Festival

Golden Wheels Exhibit and Hillwood History Walk



Lecture Series and Walking Tours

- ❧ *Writing Family History*
- ❧ *Neighborhood History Series*
- ❧ *Northwest King County Native American History*
- ❧ *Not Unsung: Women in Shoreline*
- ❧ *Biography of Mareen Kruckeberg*
- ❧ *The Hand of Thor: Norwegians in Richmond Beach*
- ❧ *Northwest King County's Military Road – U.S. Civil War*
- ❧ *Our Wicked Past – Historic Crime*
- ❧ *The History of Native American Fishing Rights in the Northwest*
- ❧ *Betty MacDonald – The Plague and I*
- ❧ *The Farmer in the Dell: A History of Community Food Production*
- ❧ *Hillwood History Walk*
- ❧ *Richmond Beach History Walk*
- ❧ *Interurban Trail History Walk*



Vicki Stiles speaks at Earth Day, Shoreline Community College



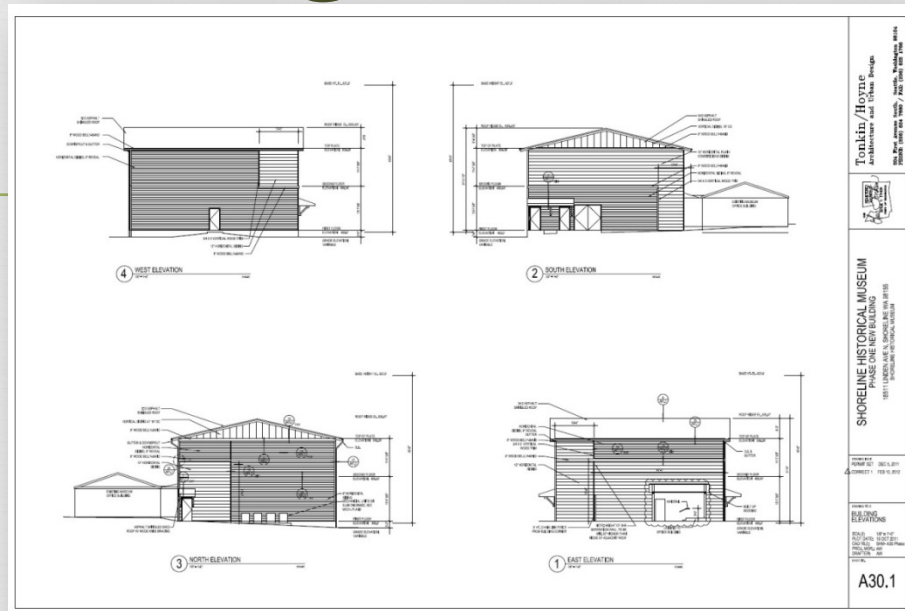
Secrets of Firland



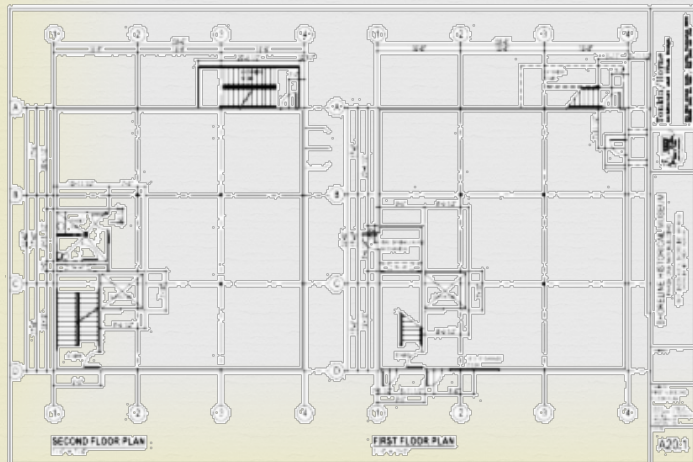
Hillwood Walk



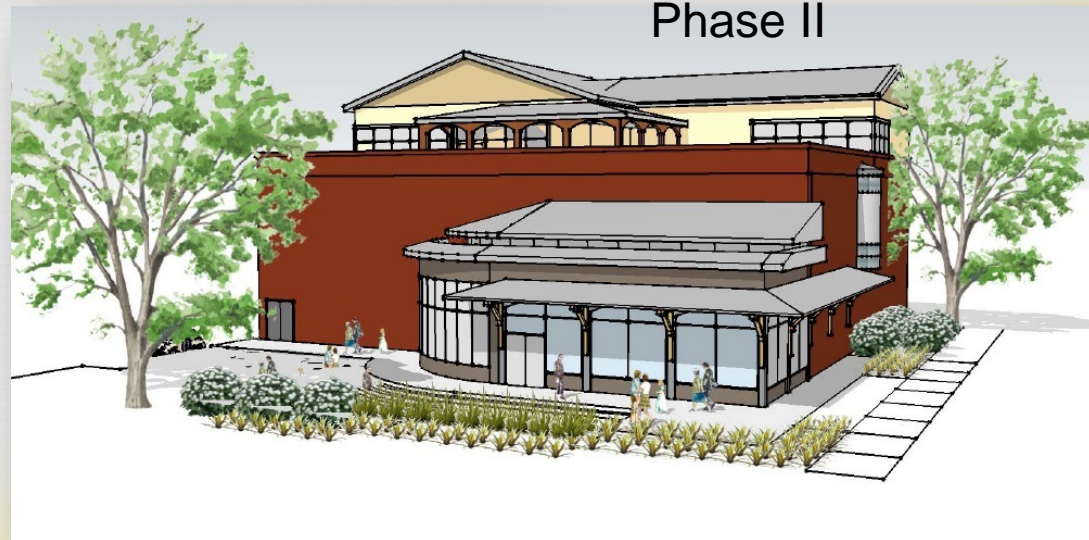
Building for the Future



Phase I – Collections and Research Facility

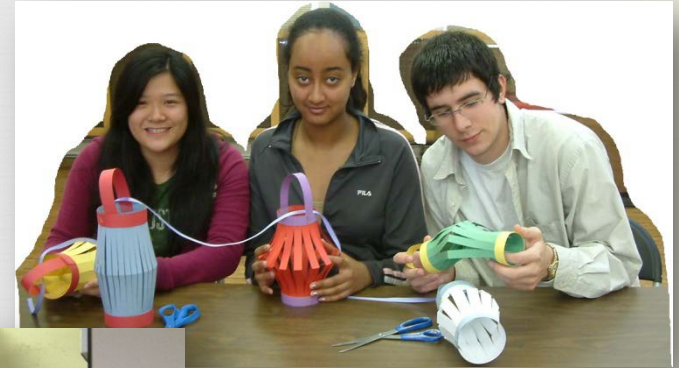


Phase II



Volunteers!

None of this would be possible without all of the volunteers who participate in our Volunteer Program for both adults and high school students!



Volunteers!



Partners

- ☞ City of Shoreline
- ☞ City of Lake Forest Park
- ☞ City of Seattle ~ Bitter Lake Community Center
- ☞ Golden Wheels Racing Pathfinders
- ☞ Shoreline /Lake Forest Park Arts Council
- ☞ Shoreline Community College
- ☞ Shoreline School District
- ☞ Shoreline Rotary
- ☞ Kruckeberg Botanical Garden Foundation
- ☞ Diggin' Shoreline
- ☞ Dunn Historic Gardens
- ☞ Libraries - Richmond Beach, Shoreline, Lake Forest Park, Lake City, Broadview
- ☞ Shoreline / Lake Forest Park Senior Center
- ☞ Puget Sound Antique Radio Association
- ☞ YMCA
- ☞ Shorelake Garden Club (WSFGC)
- ☞ Neighborhood Groups
- ☞ Lynnwood Heritage Park
- ☞ Community Events – Celebrate Shoreline, Shoreline Arts Festival, SolarFest, Ronald Bog Summerset Arts Festival, Farmer's Market, RB Strawberry Festival, and more...

Programs for 2016

- ❧ **All Annual Events (Arts Festival, SolarFest, Celebrate Shoreline) Plus:**
- ❧ **January-April - final days of the exhibit**
Shoreline: City with a Past, City with a Future
- ❧ **January - program - *The Plague and I: Betty MacDonald Readings***
- ❧ **February - program - *The Hand of Thor – Norwegians in Richmond Beach***
- ❧ **April - program - *Not Unsung: 125 Years of Women’s Work Shoreline***
- ❧ **May - new exhibit - *The Farmer in the Dell:
A History of Growing Food in the Community***
- ❧ **May – event - *Richmond Beach History Walk at RB Strawberry Festival***
- ❧ **June - event - *Golden Wheels One Day Exhibit
and Hillwood History Walk***
- ❧ **July – partner event - *Special Hands-On Day at Concerts in the Park***
- ❧ **September - event - *Historic Home Tour: The Perkins/Hawarth/Grace Estate***
- ❧ **October – program - *A History of Food Production in Shoreline,
by Brian Peterka of Diggin’ Shoreline***
- ❧ **November - event – *Annual Trillium Awards***

Funding



- ❧ City of Shoreline - \$60,000
- ❧ King County – 4Culture – over \$60,000 in sustained support and special projects funds
- ❧ WA State Capital Project Funds - \$219,000
- ❧ King County Facilities Grant - \$250,000
- ❧ Business Partnerships, Memberships, Donations, Earned Income, Services – over \$150,000



Come and See Your Great
Museum!

