

King County Metro Long Range Plan Update

May 9, 2016

Lisa Shafer, KC Metro

Nytasha Sowers, City of Shoreline



METRO CONNECTS

King County Metro's
long-range vision

**More
Choices**

**One
System**

**More
Service**



Shoreline City Council
May 9, 2016

Why now?

By 2040 our region will increase by:



850k
jobs



1m
people

We will need a Transit system that:

- Accommodates growth and demand
- Promotes equity and social justice
- Connects people to Link
- Reduces emissions
- Adopts emerging technologies

What will it take
to respond
to these needs?

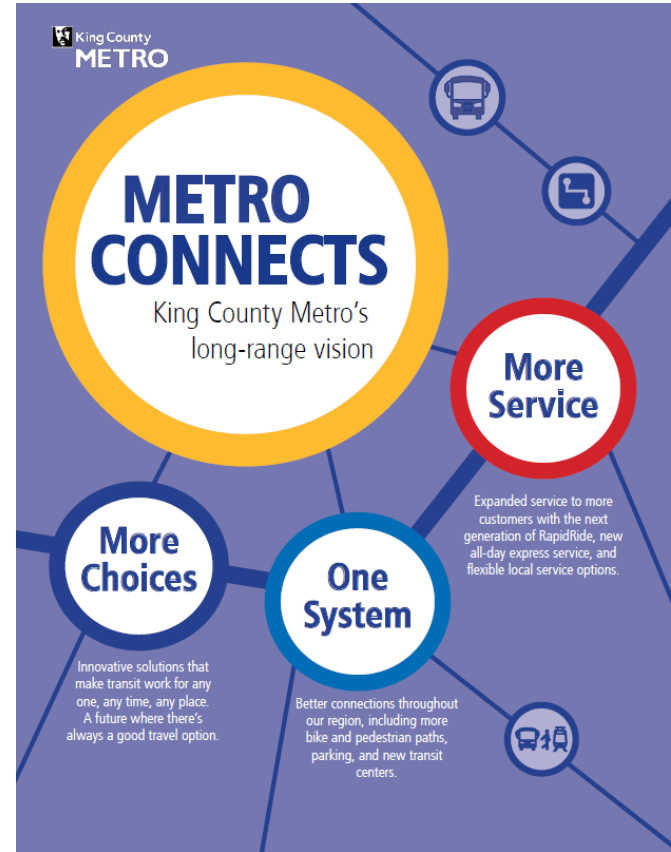
70%

GROWTH

in Metro service,
from 3.5 million
service hours to
6 million hours
by 2040.

Overview

- More Service
- More Choices to Meet Many Needs
- Easy, Safe, and Comfortable Travel
- Nuts and Bolts
- Implementing the Vision



Benefits Across King County



DOUBLE transit ridership

20%  **70%**

TRIPLE the percentage of people
close to frequent service



Commuters who take transit
grows from **14%** to **24%**



Metro buses arrive
at Link stations every
1.5 MINUTES



In **LOW-INCOME** or **MINORITY**
areas, **85%** of residents will be close
to frequent transit service—and the
OPPORTUNITIES it brings.



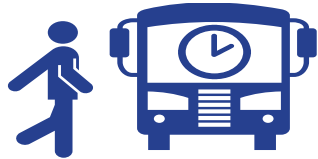
EMISSIONS REDUCED.
300,000 fewer cars are on the
road every weekday.

More Service

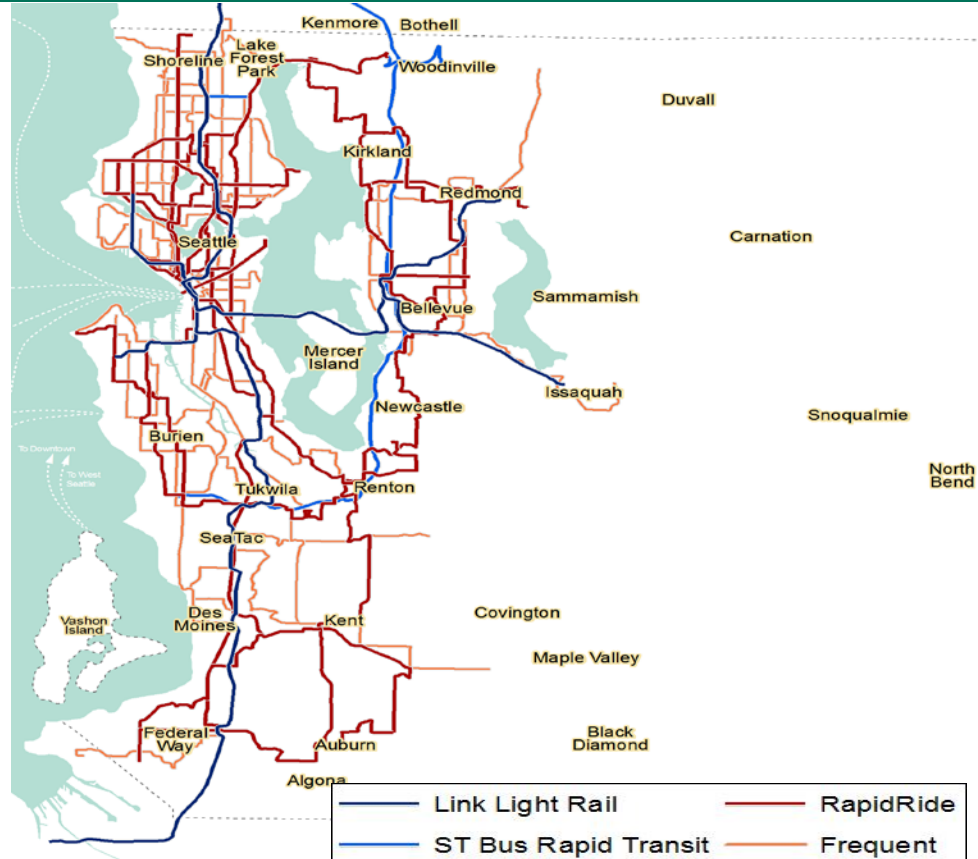


2040 Service Network

Frequent Service



Expand **RapidRide** with 20 new lines and 300 miles of new or enhanced service.



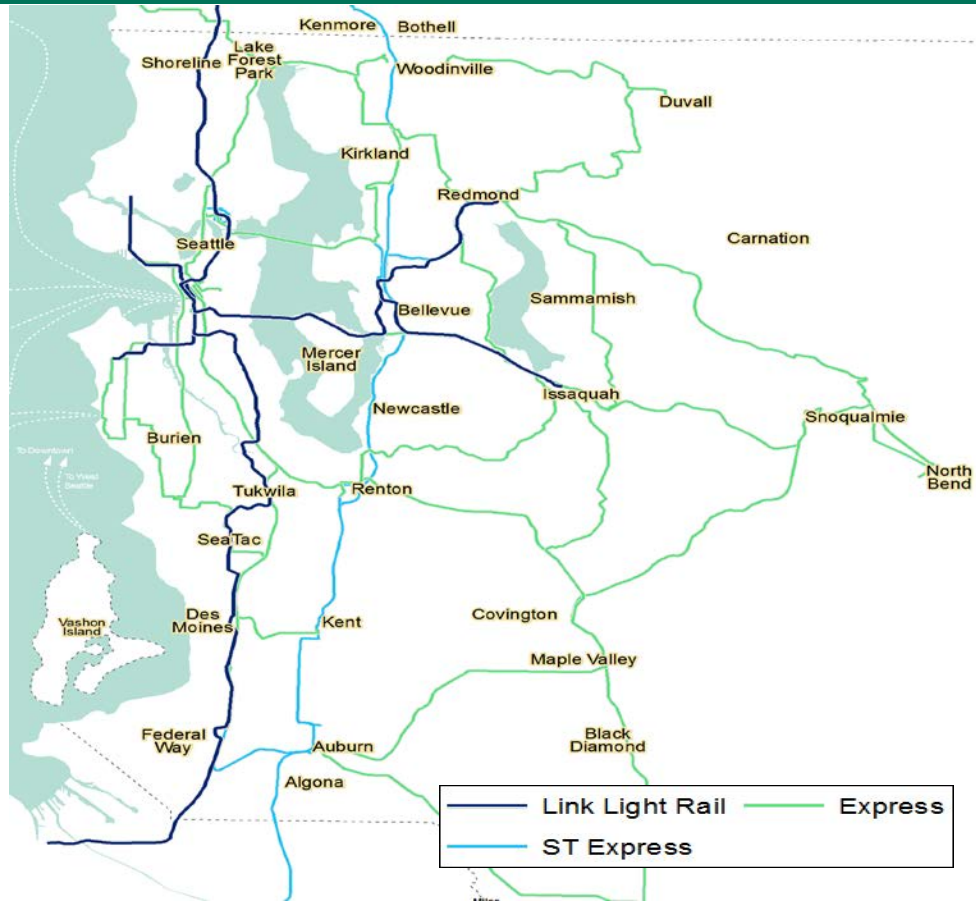
More Service

2040 Service Network

Express Service



Connect centers where many people live and work across King County



More Service

2040 Service Network

Local Service



Right type of transit or alternative service for local travel and first/last mile connections



More Service

2040 Service Network

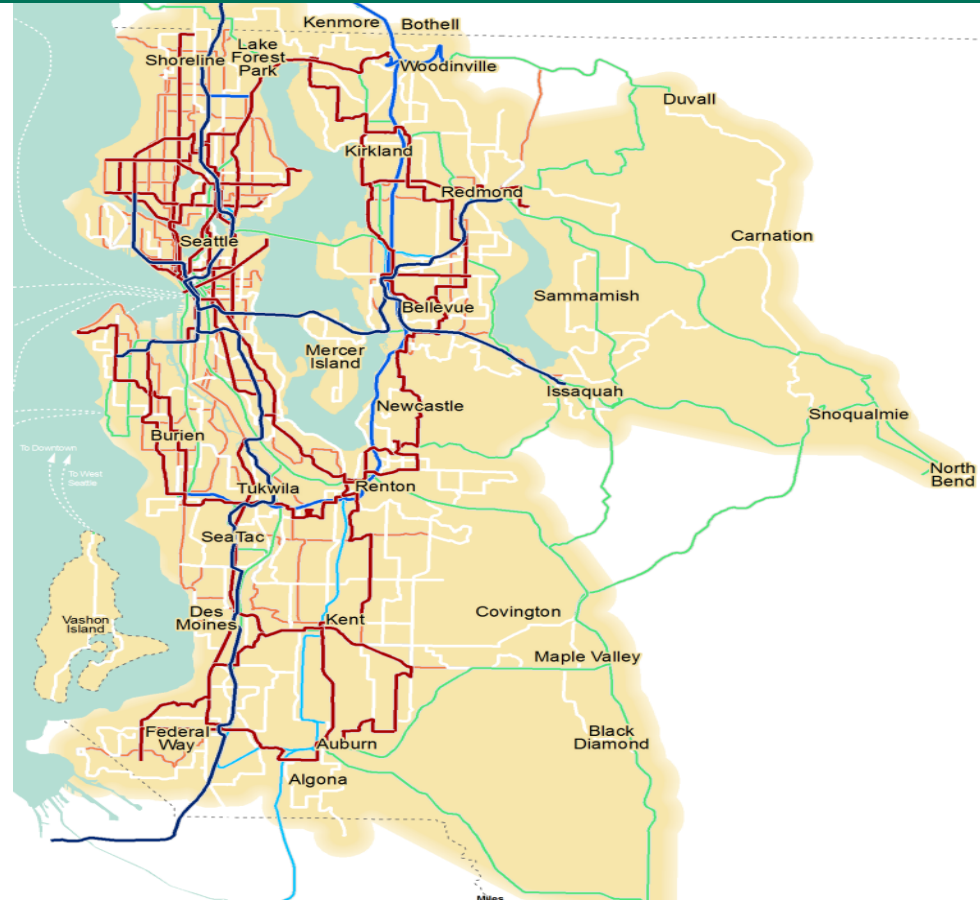
Frequent Service



Express Service



Local Service



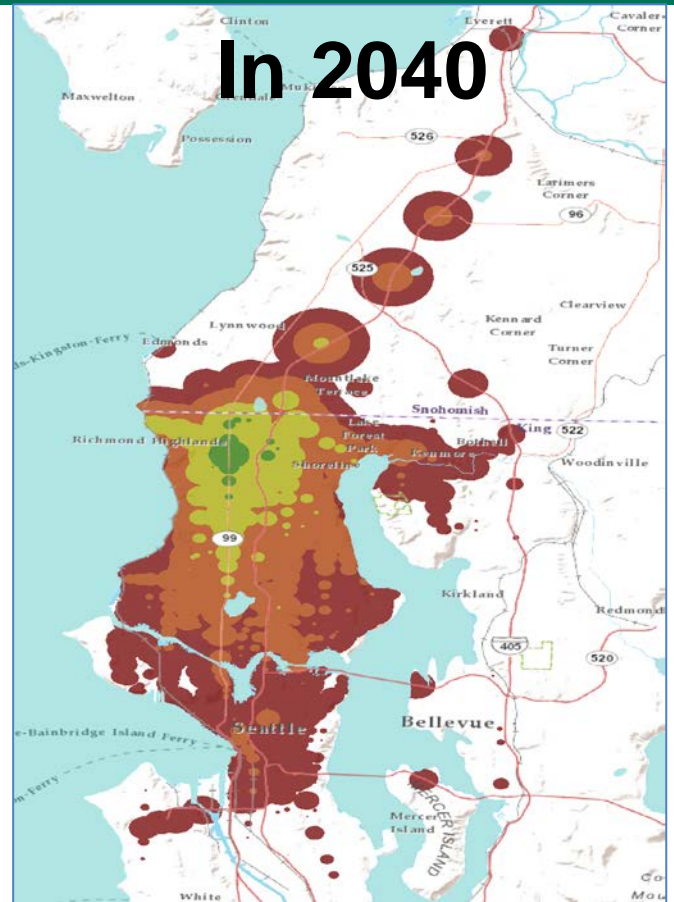
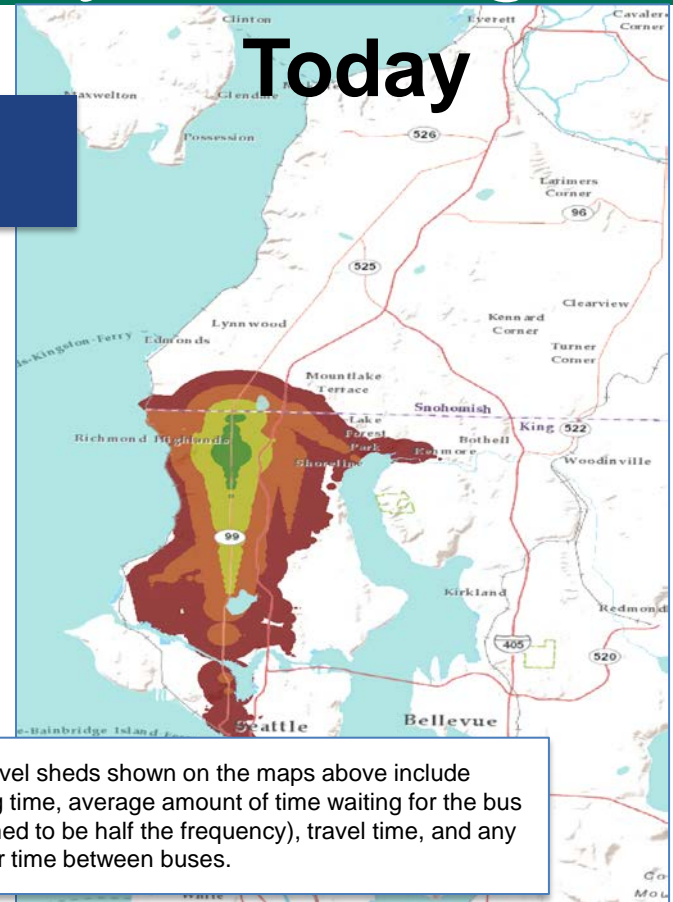
How far you can go

Starting From:

Shoreline

Today

In 2040



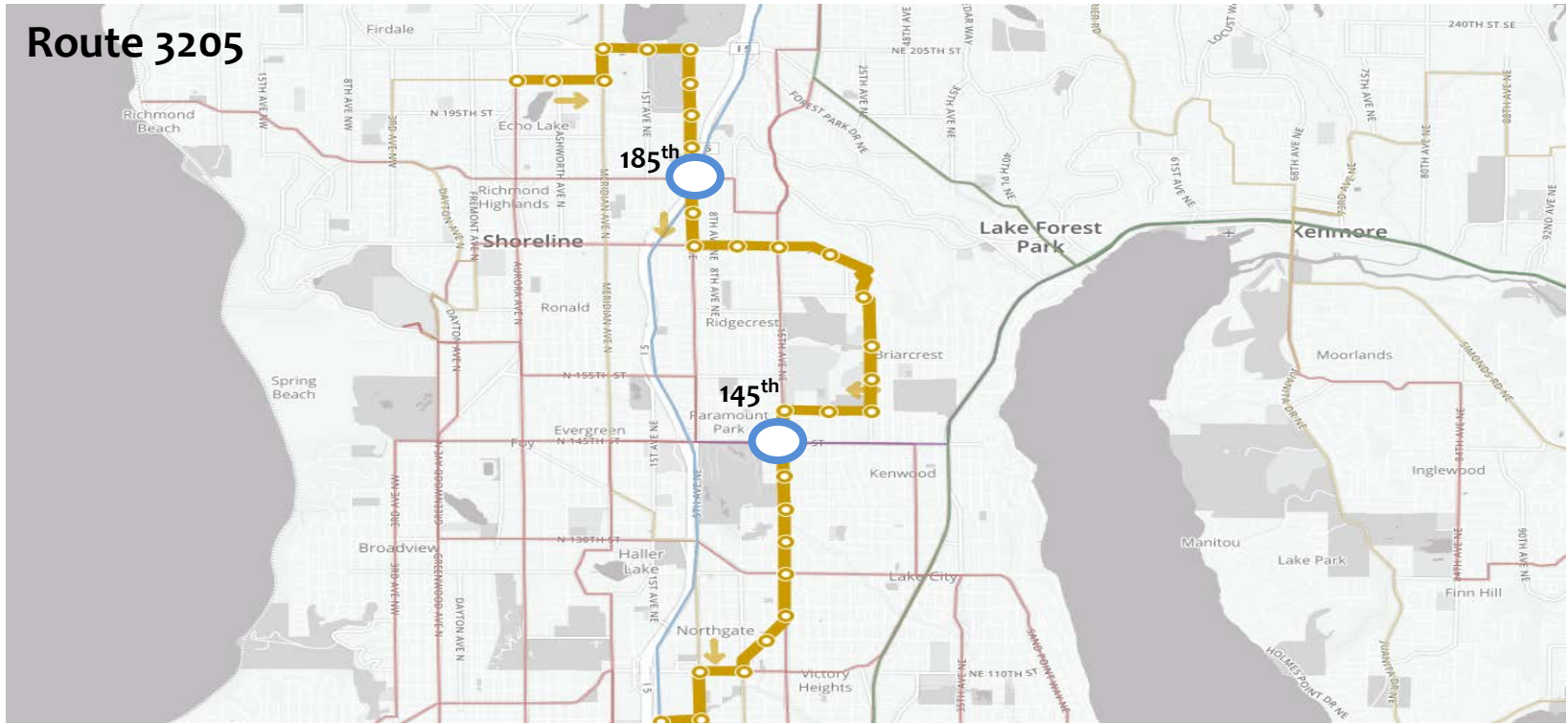
-  15 minutes
-  30 minutes
-  45 minutes
-  60 minutes

The travel sheds shown on the maps above include walking time, average amount of time waiting for the bus (assumed to be half the frequency), travel time, and any transfer time between buses.

Key Transit Issues in Shoreline

- Improve speed and reliability and create fast and convenient transfers
- Connect Rapid Ride on Aurora to 522
- Frequent/Express service on 522
- Comprehensive local service to Link (frequent during peak)
- Frequent and fast service needed on 145th
- Express service from Shoreline to UW during peak period
- Comprehensive service between community colleges, Shoreline high schools and Northgate

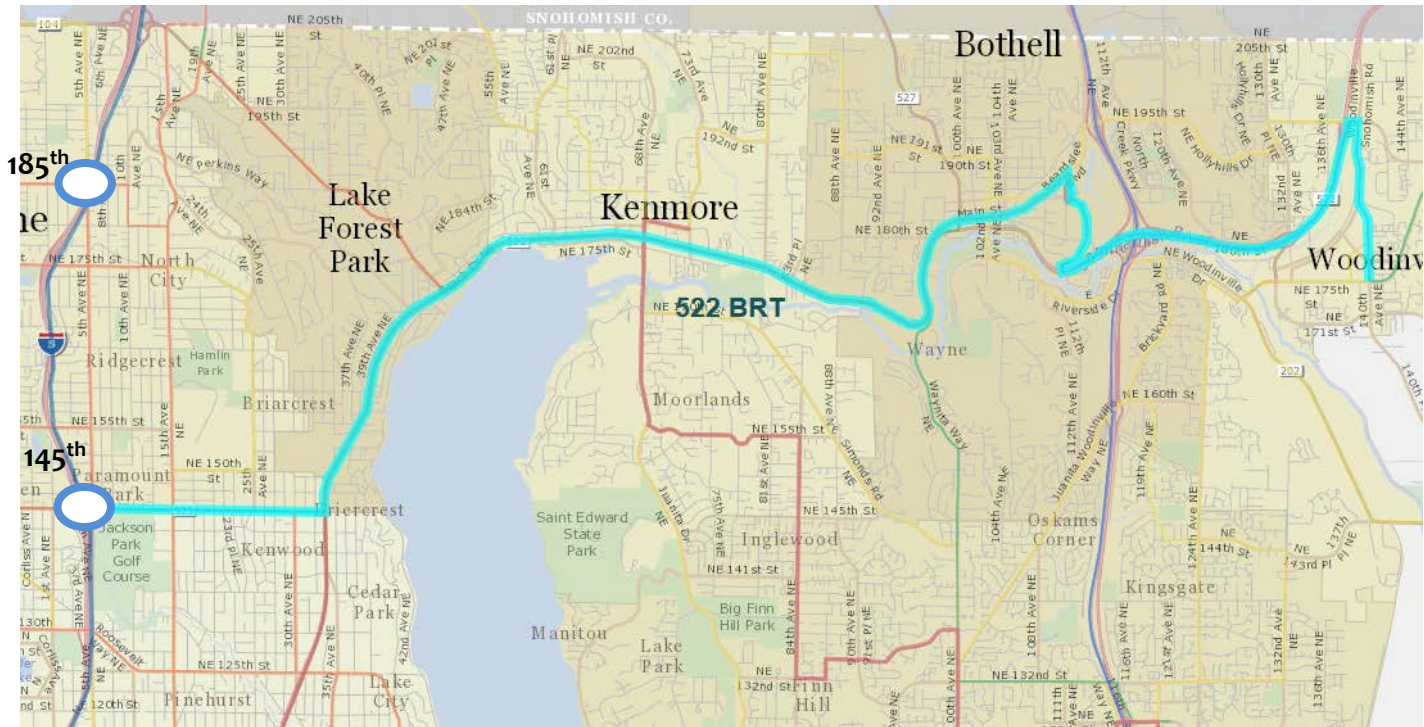
METRO CONNECTS – Shoreline's Input



The 2040 transit service network in **METRO CONNECTS** includes several frequent and local connections to Link light rail within Shoreline.

METRO CONNECTS – Shoreline's Input

SR 522 BRT

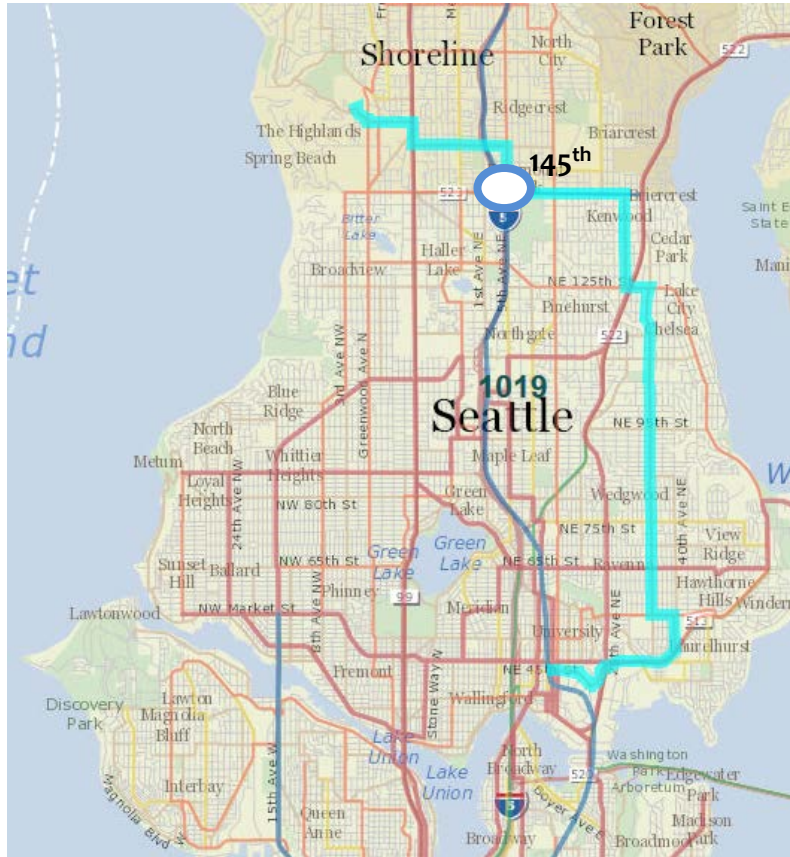


The 2025 & 2040 transit service network in **METRO CONNECTS** includes BRT on SR 522 connecting east parts of Shoreline to Light rail, and eastside cities.

METRO CONNECTS – Shoreline's Input

Route 1019 Frequent Service

The 2025 & 2040 transit service network in **METRO CONNECTS** includes Route 1019 Frequent service connecting the Highlands to 145th Stations, and through NE Seattle to UW.

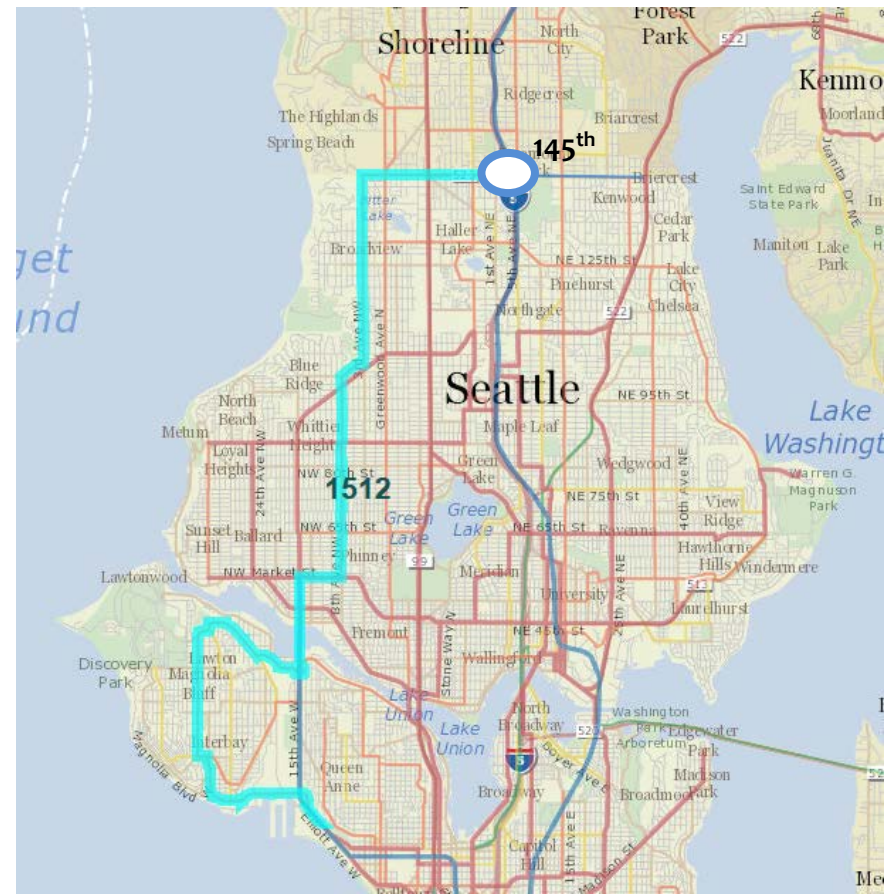


METRO CONNECTS – Shoreline's Input



Route 1512 Frequent Service

The 2040 transit service network in **METRO CONNECTS** includes Route 1512 Frequent service connecting residents along 145th west of I-5 to light rail. Also connects south to Magnolia and Interbay.



Service you can count on

Investments to help buses run faster and stay on schedule:

- Bus lanes, signal priority, off-board ORCA readers
- 600 miles of roadway investments for all service types
- Significant expansion to Metro's capital program
- Requires strong partnerships with cities



More Choices for More Needs



Expanded Range of Options:

- Provide flexible service where traditional local transit service does not fit
- Make it easier to move between Metro and other providers
- Invest in paratransit and find new options to increase access to Metro's services
- Move toward faster and easier payments with ORCA Next Generation
- Integrate city planning and transit planning
- Develop new products through research and development

Easy, Safe, and Comfortable



Make it easier to get where you want to go:

- New and better information for customers and to improve operations
- Improvement to make easy connections to transit
- Safe and well-designed passenger facilities
- Make getting on the bus fast and easy

Access to Transit



**Bike and
Walk Access**



**City Land
Use Plans**



Transit Hub

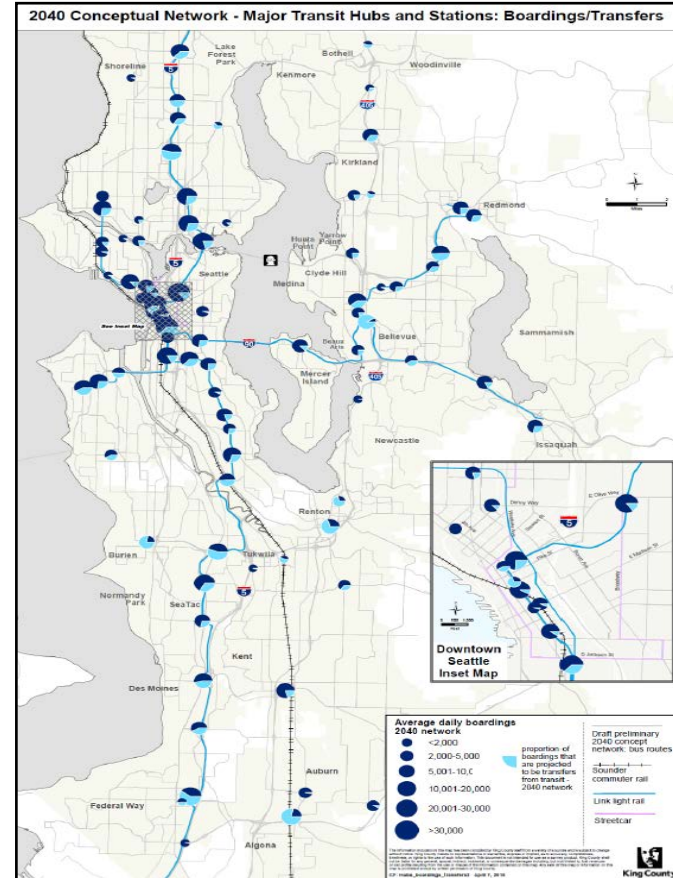


**Transit
Parking**



**Transit-oriented
Development**

Transit Hubs and Stations



Park-and-Rides

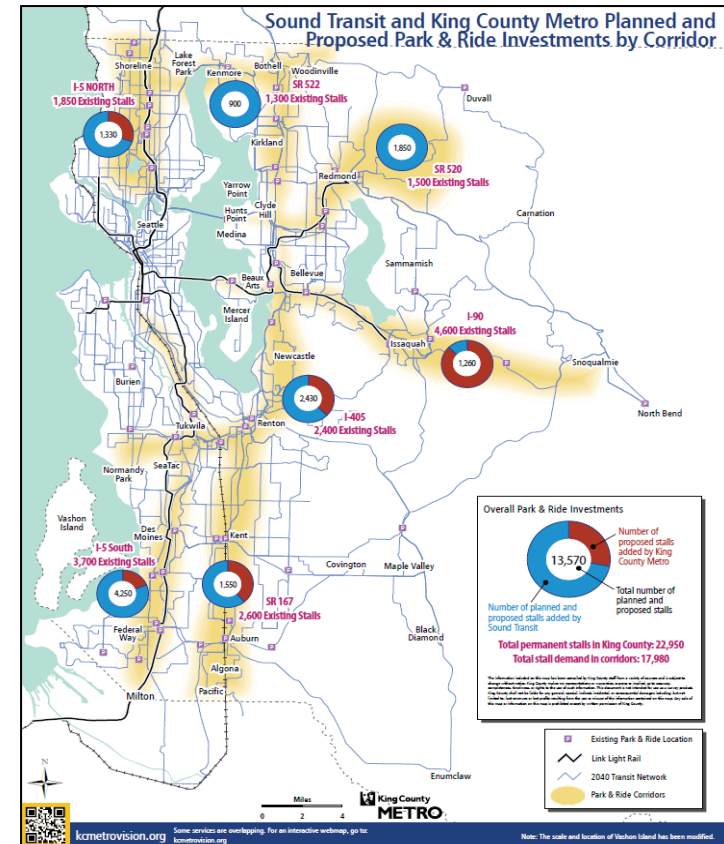
More spaces

- Over 40% more park-and-ride stalls in 2040*
- Investment focused in areas of low development & transit density
- Opportunities for more leased lots, shared parking, on-street options

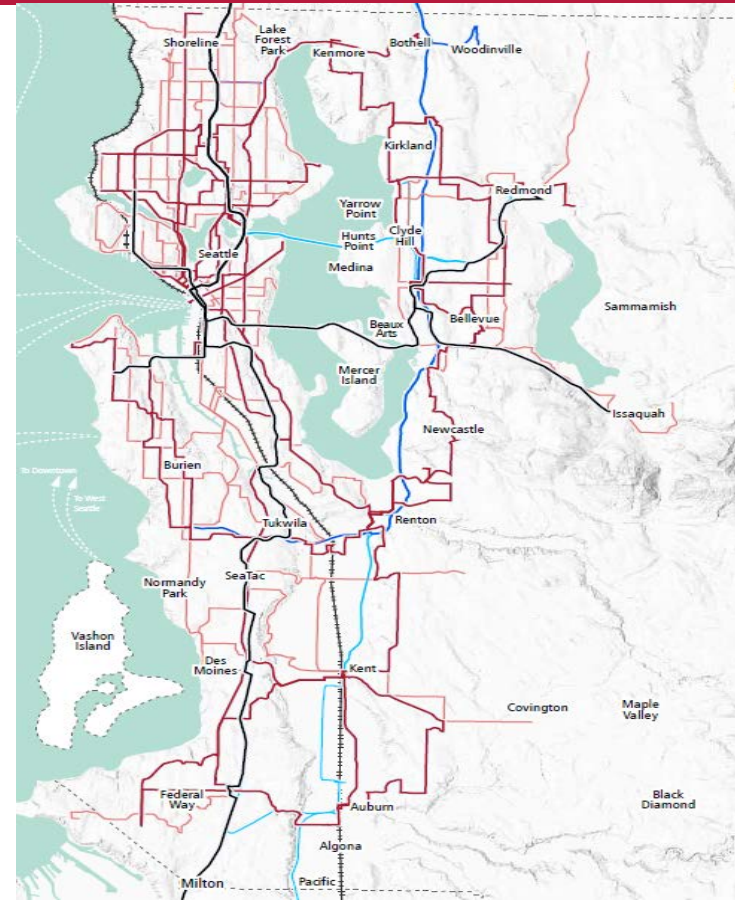
Increased efficiency

- Increase utilization through more rideshare, restriping
- Technology improvements like real-time parking info & communication
- Use paid parking to better manage capacity

* Includes proposed Sound Transit investments



TOD and Redevelopment



The Nuts and Bolts

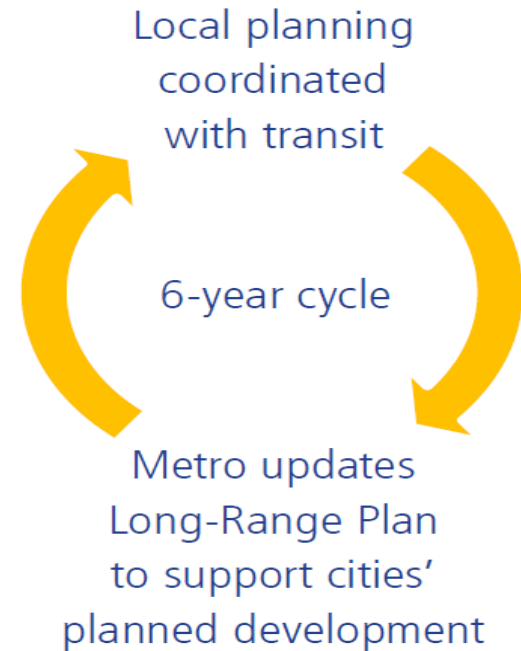


- **Our people:** substantially grow our workforce to support the expansion of service
- **A fleet for the future:** buy more than 500 new buses and vans to support the higher levels of service
- **Trolley network:** Grow our trolley network by expanding and infilling overhead wires
- **Layover areas:** Increase bus layover space by 50% from today
- **Bus bases and support facilities:** Add two to three new bus bases and invest additional support services and facilities.

Implementing the Vision

Transit system will require substantial capital and service investments

- Strengthen partnerships with cities, stakeholders and other transportation providers
- Work with cities to ensure improvements are a good fit for each community
- Long-range plan to support local planning and identify complementary transit service



Learn More and Give us Feedback



Visit kcmetrovision.org



Sign up for updates



Send us your comments



Attend an event



Attend a Community Advisory Committee meeting



Join the conversation on social media
#kcmetrovision



Take our online survey

May 20 – Public comment ends on the draft METRO CONNECTS plan



Questions?

Contact us:

Stephen Hunt
Transportation Planner
Stephen.Hunt@KingCounty.gov
206-477-5828

Tristan Cook
Community Relations Planner
Tristan.Cook@KingCounty.gov
206-477-3842

Lisa Shafer
Transportation Planner
Lisa.Shafer@kingcounty.gov
206-477-5824



Opportunities for Input on KC Metro's Draft Long Range Plan

- A link to KC Metro's online survey and open house locations is available through City Shoreline's website (<http://http://www.kcmetrovision.org/metro-long-range-plan-survey>)
- *Alert Shoreline* news bulletin encouraged Shoreline residents and businesses to participate in KC Metro's Draft Long Range Plan outreach activities



Proposed Service for Shoreline

Proposed improved that address Shoreline's requests include:

- ✓ Provide more frequent service to key local and regional destinations
- ✓ Service connections between high schools
- ✓ Direct feeder routes from all areas of Shoreline to 145th and 185th light rail
- ✓ Reduce travel times between community colleges and to Northgate
- ✓ Better connections to the University of Washington



City Council Letter of Support

- Support **145th/SR522 Express Bus/ BRT**
- Interested in partnering on needed capital facility and multimodal investments - especially as they build ridership and support local TOD
- Request completion of all KC Metro improvements in Shoreline by 2023 to coincide with the opening of the light rail stations at 145th and 185th Streets



Questions?

