

# Sound Transit 3 Update

April 18, 2016

Chris Rule, Sound Transit

Nytasha Sowers, City of Shoreline





# Draft ST3 Plan

Shoreline City Council

April 18, 2016

 **SOUNDTRANSIT**

# Sound Transit District



# UW & Capitol Hill stations now open!



**\$200 million**

under budget

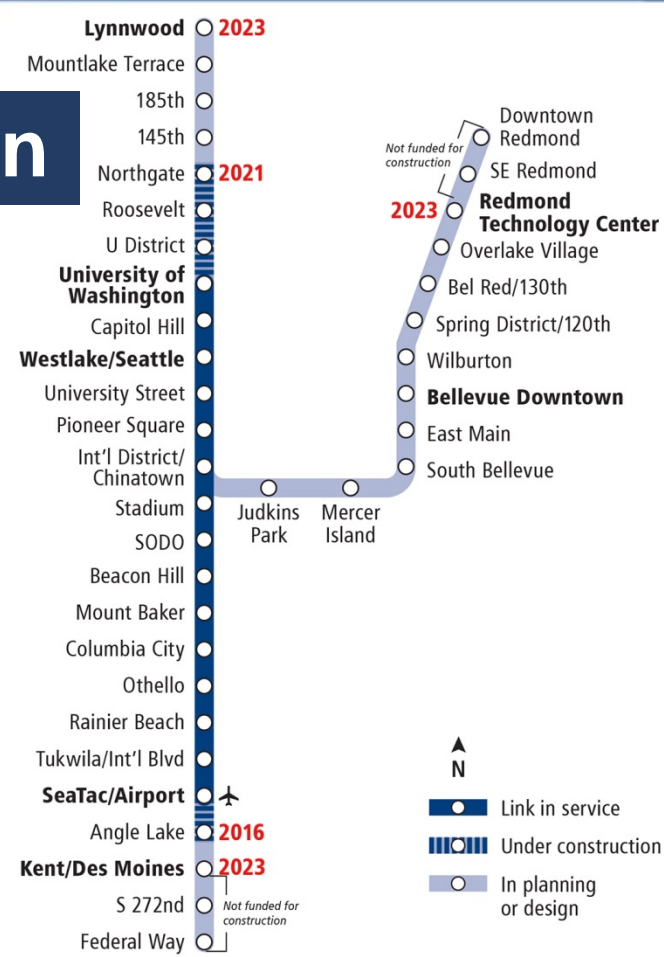
**6 months**

ahead of schedule

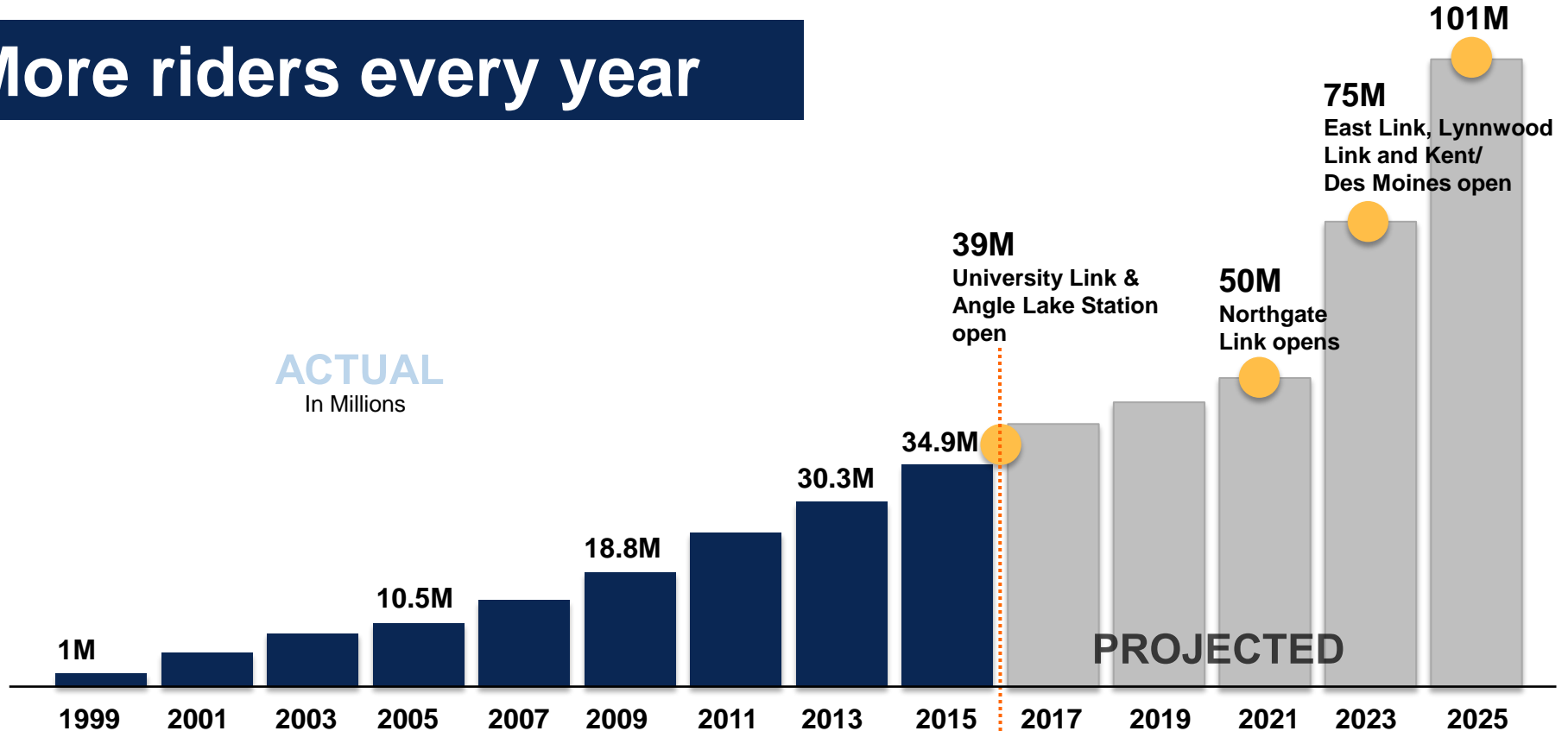
# Regional Link light rail expansion



*By 2023, Puget Sound will have 50+ miles of light rail, with 30+ stations, directly connecting 11 cities*



# More riders every year



Source: Sound Transit ridership reports, service implementation plan and financial plan.

# ST2 projects underway

**KEY**

**PROPOSED ST3 PROJECTS**

- Link Light Rail
- Bus Rapid Transit
- Sounder Rail
- Proposed shoulder-running buses / speed and reliability improvements
- Environmental study
- Future investment study

**CURRENT AND PLANNED SERVICE**

- Link Light Rail
- Sounder Rail
- ST Express Bus

**STATIONS**

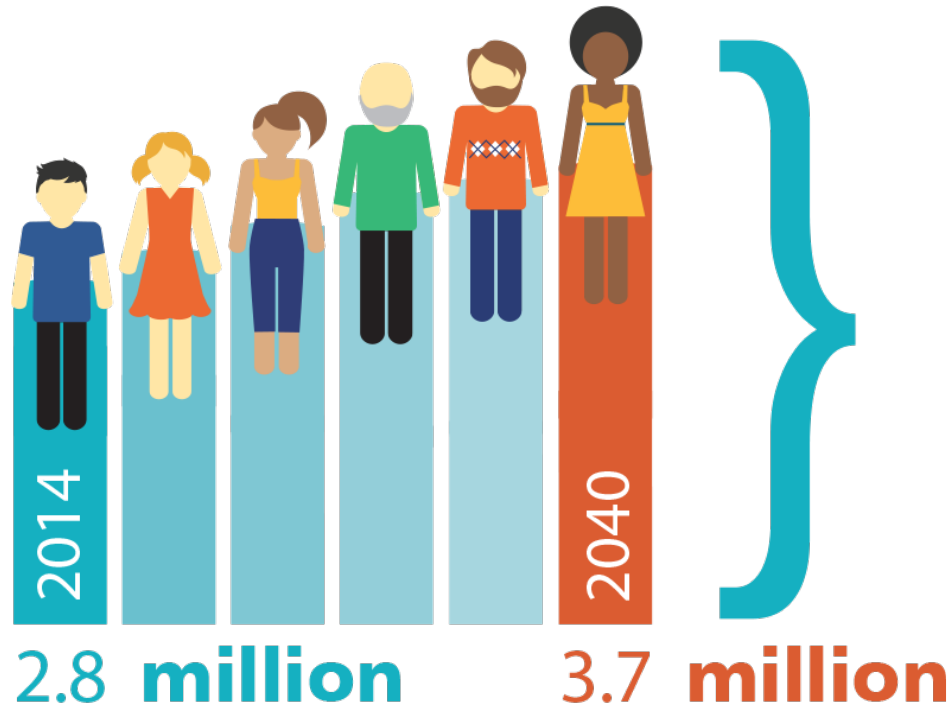
- New station
- New station / added parking
- Improved station
- Major rail transfer

NOTE: All routes and stations are representative.



| Projects  | Scheduled Completion |
|---|----------------------|
| University Link Extension   | 2016 ✓               |
| Angle Lake Link Extension   | 2016                 |
| Northgate Link Extension  | 2021                 |
| Tacoma Link Extension<br><i>partnership project to be baselined in Q2 2017*</i> | 2022*                |
| East Link Extension   | 2023                 |
| Lynnwood Link Extension   | 2023                 |
| Extension to Kent/Des Moines  | 2023                 |

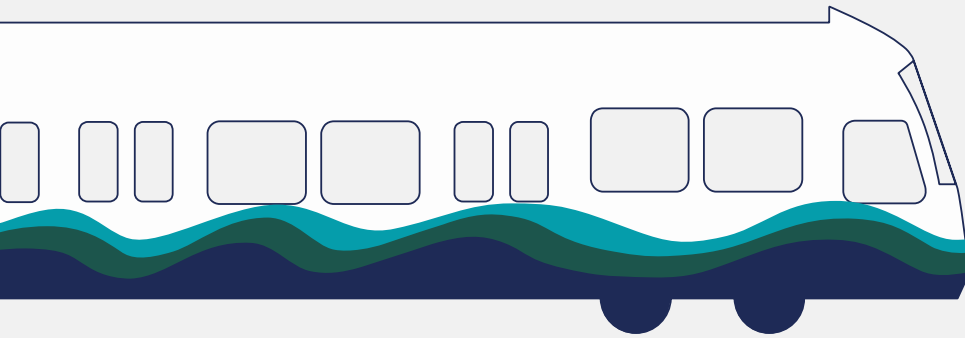
# More people calling our region home



Source: Puget Sound Regional Council



# ST3 timeline



# Why ST3?

## **Bold transit infrastructure investments**

- Benefit quality of life, economy & environment
- Increased transportation capacity in busiest corridors
- Delivered steadily over 25 years
- Regional 112-mile light rail system
  - Fast, frequent, reliable service
  - Serving more riders & communities
  - 525,000 daily riders by 2040



UP TO **16,000**  
RIDERS  
PER HOUR

**Why light rail?**



AS LOW AS **700**  
VEHICLES  
PER HOUR  
DURING PEAK  
COMMUTES

# ST3 Draft Plan

## Light rail highlights

- 112-mile regional system
- North to Everett, south to Tacoma, east to Redmond & Issaquah, west to Ballard & West Seattle
- Tacoma Link to Tacoma Community College
- Daily ridership: 525,000
- 35 new stations

*Get details > [soundtransit3.org](https://www.soundtransit.org)*



# ST3 Draft Plan

## Other highlights

- **Sounder south line extended service & capacity improvements**
- **Bus on shoulder: I-5, I-405, SR 518, SR 167**
- **Access improvements to Link and Sounder stations**
- **BRT on I-405 & SR 522**

*Get details > [soundtransit3.org](https://www.soundtransit.org)*



# Draft Plan: Early deliverables



| Projects | Draft Schedule |
|----------|----------------|
|----------|----------------|

**To improve bus speed and reliability:**

- Bus-on-shoulder opportunities: I-5, I-405, SR 518, SR 167
- Capital improvements for RapidRide C and D Routes
- Bus capital Improvements for Pacific Ave. (Tacoma)
- Bus capital improvements in East Pierce County

**To improve system access:**

- Parking on SR 522 in Kenmore, Forest Park and Bothell
- I-405: Parking at Kingsgate and new transit center with parking in South Renton
- Parking for Sounder north and south lines
- Passenger amenities, including pedestrian and bicycle improvements

2019-2024





# Draft Plan: BRT-ST Express

| Projects   | Draft Schedule |
|--|----------------|
| <b>ST Express:</b> <ul style="list-style-type: none"> <li>Approximately 600K annual hours to continue providing interim express bus service in future HCT corridors</li> </ul> | On-going       |
| I-405 BRT: Lynnwood to Burien  | 2024           |
| SR 522 & NE 145th Street BRT: <ul style="list-style-type: none"> <li>UW Bothell to NE 145th light rail station</li> <li>Includes service from Woodinville</li> </ul>           | 2024           |





# Draft Plan: Sounder

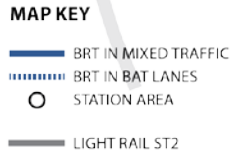
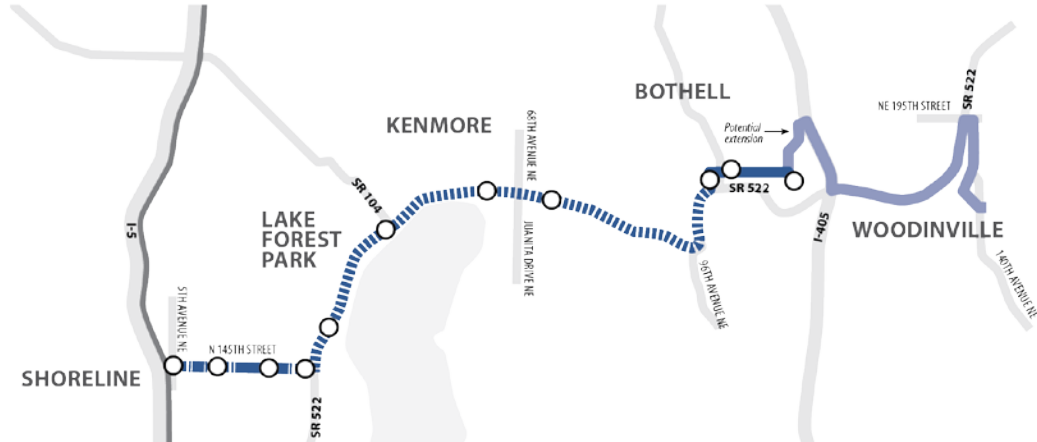
| Projects  | Draft Schedule |
|---|----------------|
| Lakewood to DuPont Sounder with station in Tillamook  | 2036           |
| South Sounder Capital Improvements Program: <ul style="list-style-type: none"> <li>Funds capital items as such as track improvements, platform extensions and access projects to meet growing demand</li> </ul> | 2024-2036      |

# Draft Plan: Environmental & future investment studies

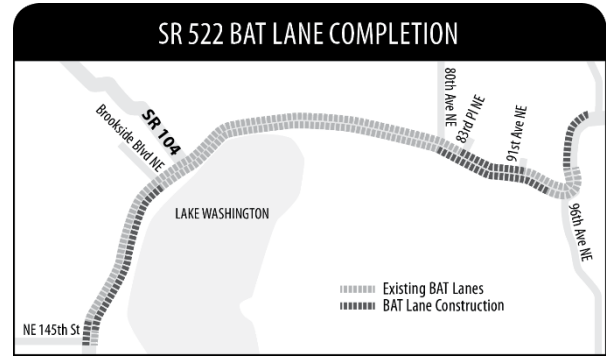


- ### Studies
- HCT Environmental Study: Bothell to Bellevue via Kirkland
  - HCT Study: Northern Lake Washington
  - HCT Study: Light rail extending from West Seattle to Burien and connecting to light rail spine
  - HCT Study: Connections from Everett to Everett Community College
  - HCT Study: Commuter rail to Orting

# 145<sup>th</sup>/SR 522 BRT – Representative Corridor in Draft ST3 Plan



*Alignments and stations shown are representative and are identified for purposes of cost estimating, ridership forecasting and other evaluation measures.*



## Transit Integration



- Projects for transit partners
- Project allowances for funding bus/rail transfer facilities
- Concurrent long-range planning

## Transit Oriented Development



- Project allowances for TOD Planning
- Regional Equitable TOD Fund: \$20m
- TOD Program: \$20m

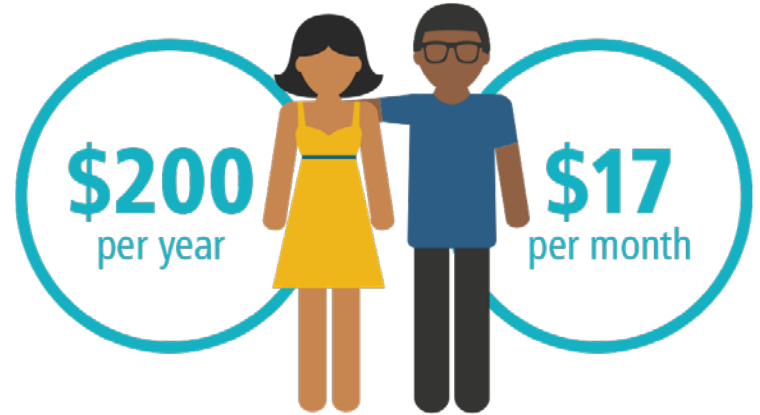
## System Access



- System Access Fund: \$100m
- Innovation and Research \$75m
- Project allowances: Non-Motorized Access
- Parking

# Draft Plan: Funding

| Revenue source<br><i>in billions, YOY</i> | 25-yr Draft Plan |
|---|------------------|
| Sales tax                                 | 17               |
| License tabs                              | 7                |
| Property tax                              | 3                |
| <b>Total taxes*</b>                       | <b>27</b>        |
| Other revenue                             | 23               |
| <b>Total estimated sources of funds</b>   | <b>\$50B</b>     |



\*Current forecast: 0.5% sales & use tax, 0.8% MVET & 0.25% property tax

# We want to hear from you!

- **March 29-April 29:**

- Online survey at [soundtransit3.org](https://soundtransit3.org)
- **Public and stakeholder outreach**

April 19\*      Ballard High School – 5:30 pm

April 21      Evergreen State College – Tacoma - 5:30 pm

April 25      Everett Station - 5:30 pm

April 26\*      West Seattle High School - 5:30 pm

April 27\*      Old Redmond School House - 5:30 pm

April 28\*      Todd Beamer High School – Federal Way - 5:30 pm

April 28\*      Union Station, Seattle – 11:30 am

*\*Coordination with King County Metro's LRP public outreach*

- **June: Adoption of Final System Plan**
- **November: Ballot measure for voter consideration**



**Connect with us**

**SOUNDTRANSIT3.ORG**

**Facebook.com/SoundTransit**

**Twitter.com/@SoundTransit**

 **SOUNDTRANSIT**  
**RIDE THE WAVE**

# Opportunities for Input on ST3

- Link to ST3 online survey and ST 3 open house locations available through City Shoreline's website
- *Alert Shoreline* news bulletin encouraged Shoreline residents and businesses to participate in Sound Transit 3 outreach activities







# City Council Letter of Support

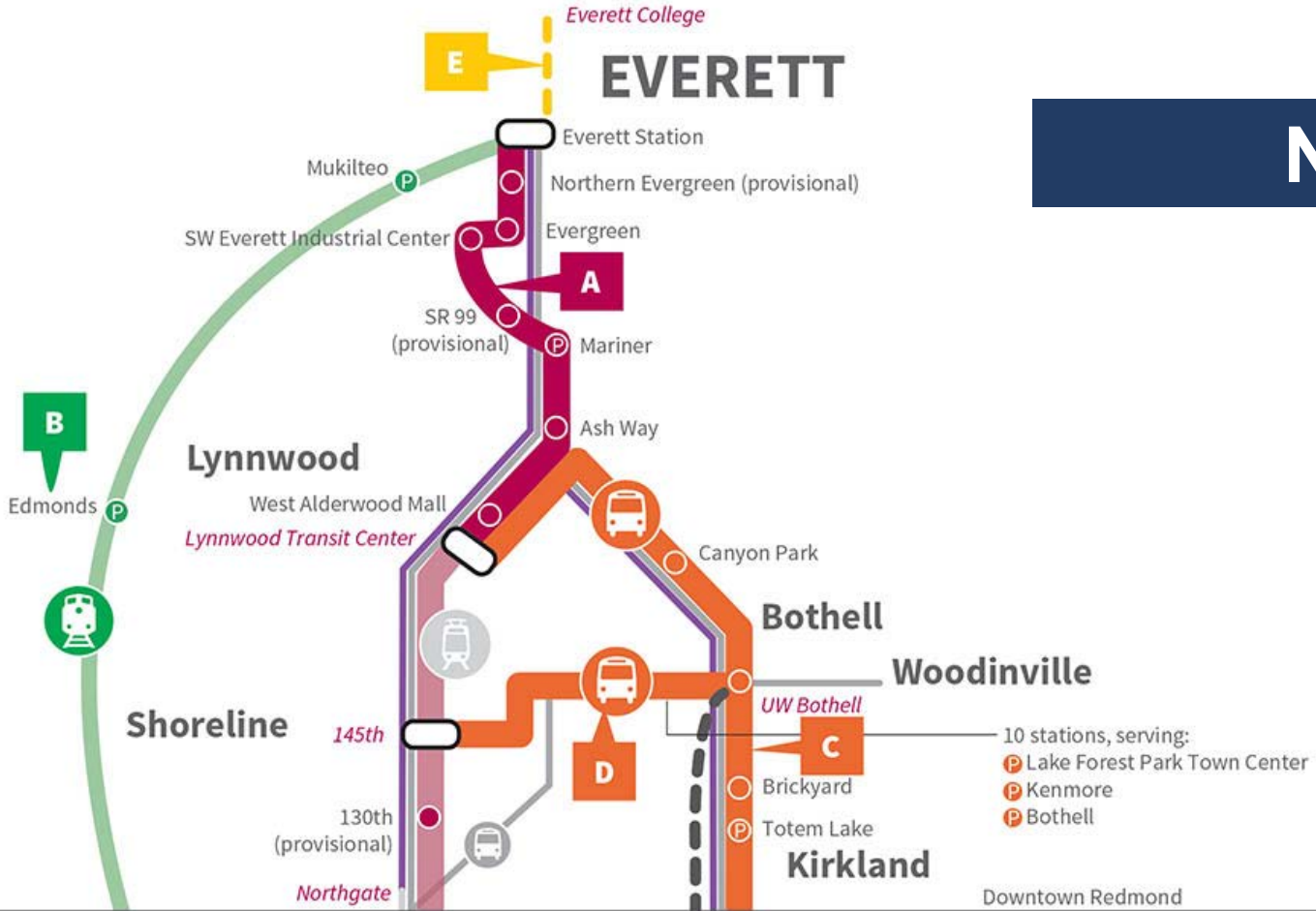
- Support **145<sup>th</sup>/SR522 BRT**
- Request inclusion in 145<sup>th</sup> and 185<sup>th</sup> stations as part of the **System Access** program
- Request completion of all ST3 improvements in Shoreline by 2023 to coincide with the opening of the light rail stations at 145<sup>th</sup> and 185<sup>th</sup> Streets



Any Questions?



# North corridor



**KEY**

**PROPOSED ST3 PROJECTS**

- Link Light Rail
- Bus Rapid Transit
- Sounder Rail
- Proposed shoulder running buses/other speed and reliability improvements
- Environmental study
- Future investment study

**CURRENT AND PLANNED SERVICE**

- Link Light Rail
- Sounder Rail
- ST Express Bus

**STATIONS**

- New station
- New station / added parking
- Improved station
- Major rail transfer

NOTE: All routes and stations are representative

# Central corridor



**KEY**

**PROPOSED ST3 PROJECTS**

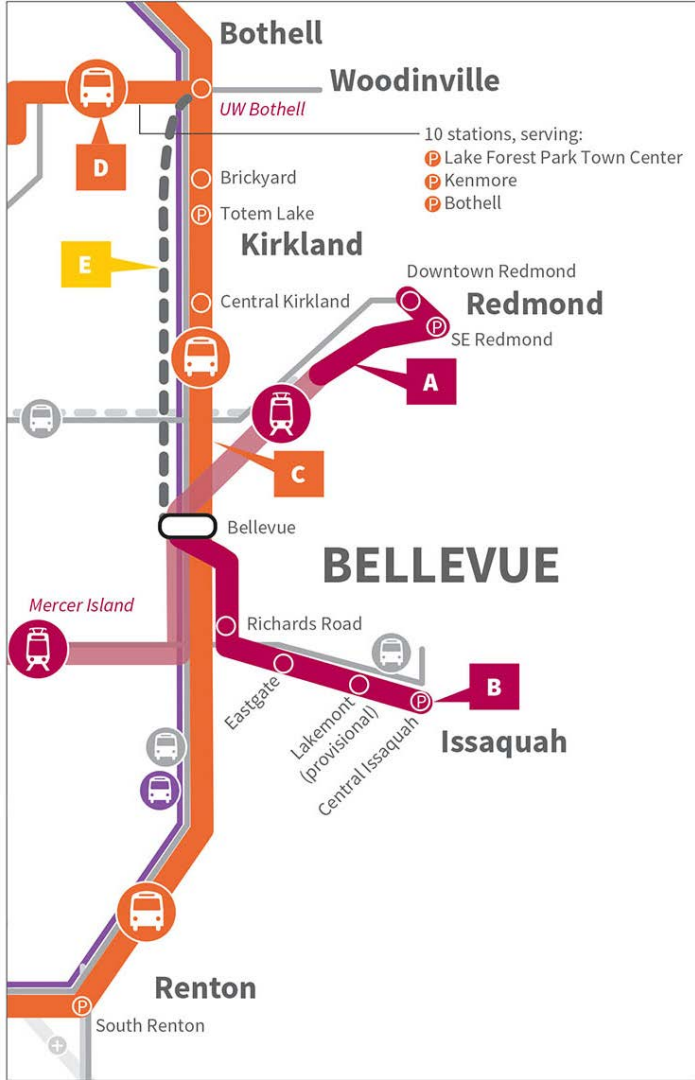
- Link Light Rail
- Future investment study

**STATIONS**

- New station
- New station / added parking
- Improved station
- Major rail transfer

NOTE: All routes and stations are representative.

# East corridor



**KEY**

**PROPOSED ST3 PROJECTS**

- Link Light Rail
- Bus Rapid Transit
- Proposed shoulder running buses/other speed and reliability improvements
- Environmental study

**CURRENT AND PLANNED SERVICE**

- Link Light Rail
- Souder Rail
- ST Express Bus

**STATIONS**

- New station
- New station / added parking
- Improved station
- Major rail transfer

NOTE: All routes and stations are representative.

# South corridor



**KEY**

**PROPOSED ST3 PROJECTS**

- Link Light Rail
- Bus Rapid Transit
- Sounder Rail
- Proposed shoulder running buses/other speed and reliability improvements

**ENVIRONMENTAL STUDY**

- Environmental study
- Future investment study

**CURRENT AND PLANNED SERVICE**

- Sounder Rail
- ST Express Bus

**STATIONS**

- New station
- New station / added parking
- Improved station
- Major rail transfer

NOTE: All routes and stations are representative.

# Draft ST3 funding

| Revenue source<br><i>in billions, YOY</i> | 15 years     | 25-year Draft ST3 Plan |
|---|--------------|------------------------|
| Sales tax                                 | 9            | 17                     |
| License tabs                              | 4            | 7                      |
| Property tax                              | 2            | 3                      |
| <b>Total taxes*</b>                       | <b>15</b>    | <b>27</b>              |
| Other revenue                             | 11           | 23                     |
| <b>Total estimated sources of funds</b>   | <b>\$26B</b> | <b>\$50B</b>           |

\* Current forecast for ST3: 0.5% sales & use tax, 0.8% MVET & 0.25% property tax



## NEW REVENUES TO FUND ST3 WOULD INCLUDE:



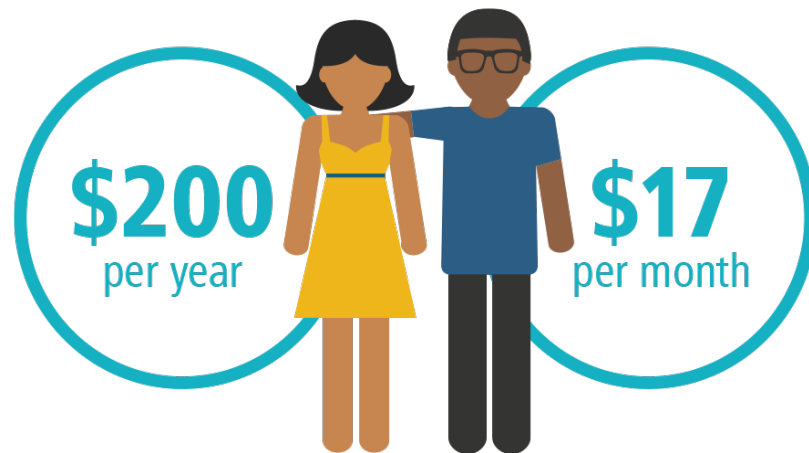
A sales tax increase of 0.5 percent  
(\$0.50 on a \$100 purchase)

An 0.8% increase in the Motor  
Vehicle Excise Tax (MVET)  
(\$80 annually on a \$10,000  
vehicle)



A property tax increase of  
0.25 percent per \$1,000 of  
assessed valuation.  
(\$100 annually on a \$400,000  
assessed house)

## Draft Plan: New taxes



## Other funding sources:

-  **Federal funds**
-  **Bonding**
-  **Fares**
-  **Sound Move and ST2 taxes**  
(once these projects have been completed)

### Partner Funds

Sound Transit's performance record has helped it attract federal grants to supplement local funding.

- \$813 million federal grant for University Link
- Lynnwood federal grant \$1.2 billion



# SCA PIC Recommendations

The Sound Cities Association (SCA) Public Issues Committee (PIC) is considering policy positions to support for the ST3 aligned around urging the Sound Transit Board to maintain the ST3 Draft Plan commitments to the:

- 25-year financial package to ensure build-out of the Plan;
- Early deliverables program;
- Investment in system access improvements;
- Commitment to equitable housing, including transit-oriented development and affordable housing; and
- Commitment to work with local jurisdictions to assess ongoing improvements to access.