

Link Light Rail Open House: Preparing for Sound Transit's Design Process

Shorewood High School

January 27, 2016



This meeting is about

The Sound Transit Design Process,
including City and resident involvement

Purpose to:

- Provide information about background and how to participate moving forward
- Solicit comment on City Council Draft Guiding Principles for Light Rail Facility Design
- Visualize design elements for stations and garages

This meeting is NOT about

- Subarea Planning or Corridor Studies
- No programmed discussion of zoning or property impacts tonight

That said...

- There are multiple distinct but related projects that the City and Sound Transit are working on in 2016

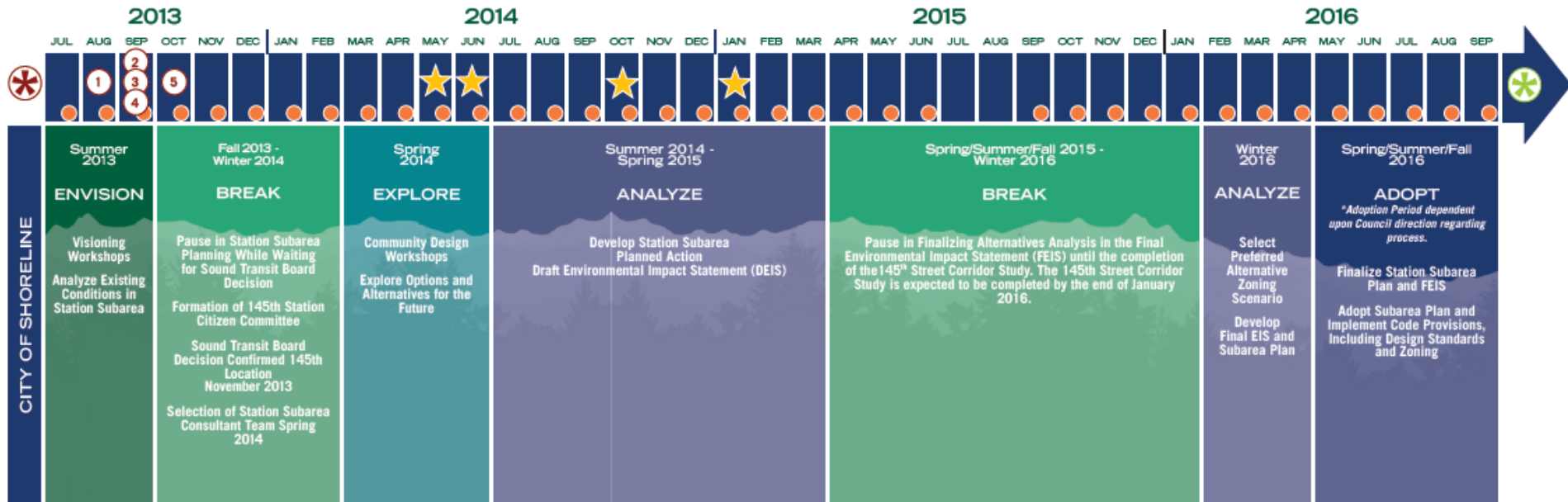


145th Corridor Study



- Open House on February 24
- Council could select Preferred Concept in April
- Preferred Concept would be refined through multiple year process of Environmental Review and Design
- shorelinewa.gov/145corridor

145th Street Station Subarea Plan Schedule



- Subarea Planning will resume with discussions at Planning Commission in February, March, and April
- Council could select Preferred Alternative zoning scenario for Final EIS in May, potentially adopt in September
- shorelinewa.gov/145station or shorelinewa.gov/lightrail



City hosted

- 5 Visioning events in 2013
- 4 Design Workshops in 2013 and 2014
- Many comments received about station and garage design
- Became basis for Guiding Principles

Guiding Principles for Light Rail Facility Design

- Multi-modality
- Public Safety
- Sustainability
- Mobility
- Neighborhood Character
- Public Amenities
- Transit-Oriented Development
- Public Art

Lynnwood Link Extension



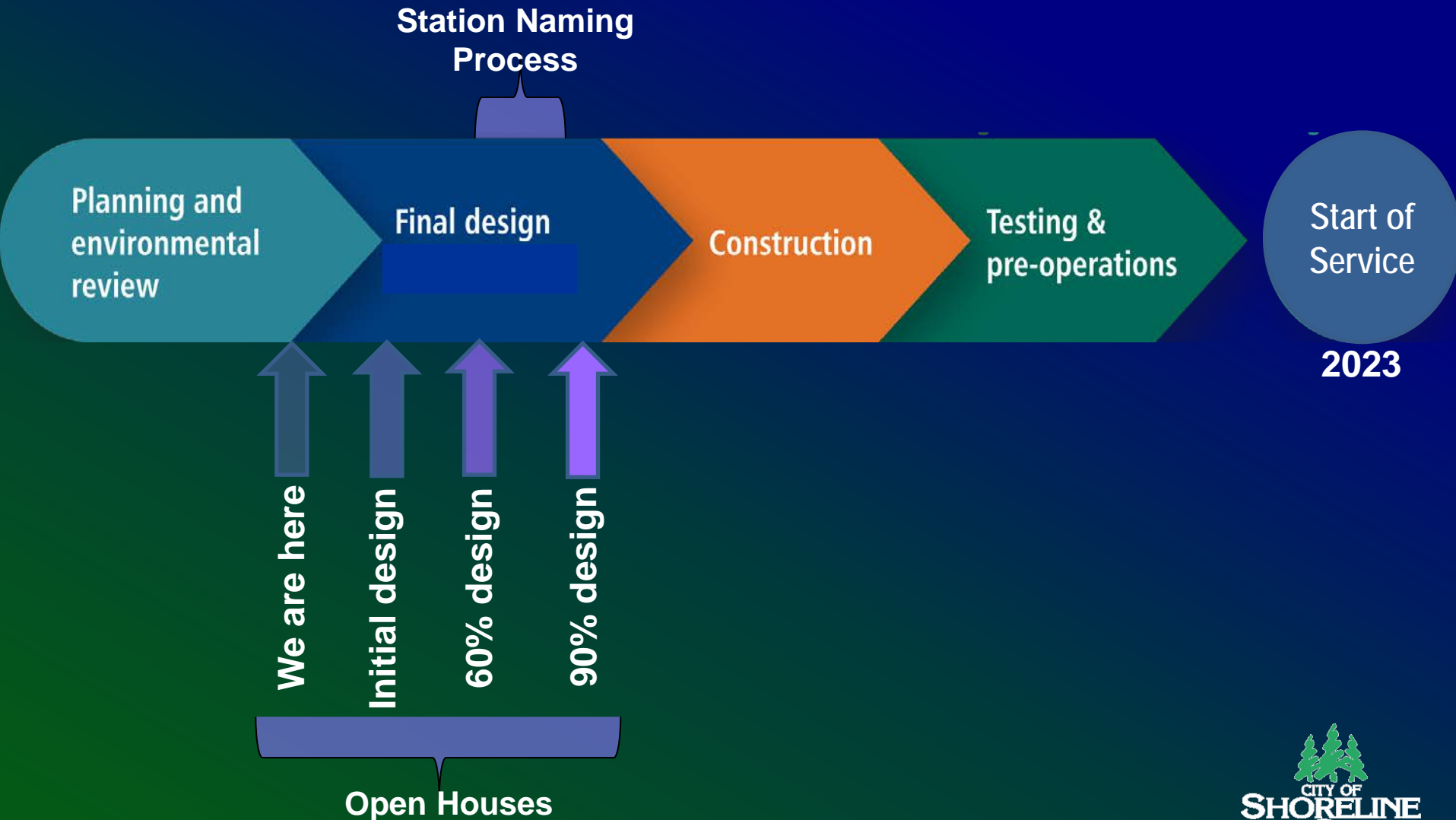
- 8.5 mile extension - Northgate to Lynnwood Transit Center
 - Fully exclusive right of way
 - ~ 55% retained cut/fill; ~ 45% elevated
- 4 stations:
 - Shoreline: NE 145th Street – elevated
 - Shoreline: NE 185th Street – retained cut
 - Mountlake Terrace: MLT Transit Center – elevated
 - Lynnwood: Lynnwood Transit Center – elevated
- ~1,500+ stalls of added P&R capacity in 3 new garages
- Potential future stations at 130th & 220th

Project Status and Schedule

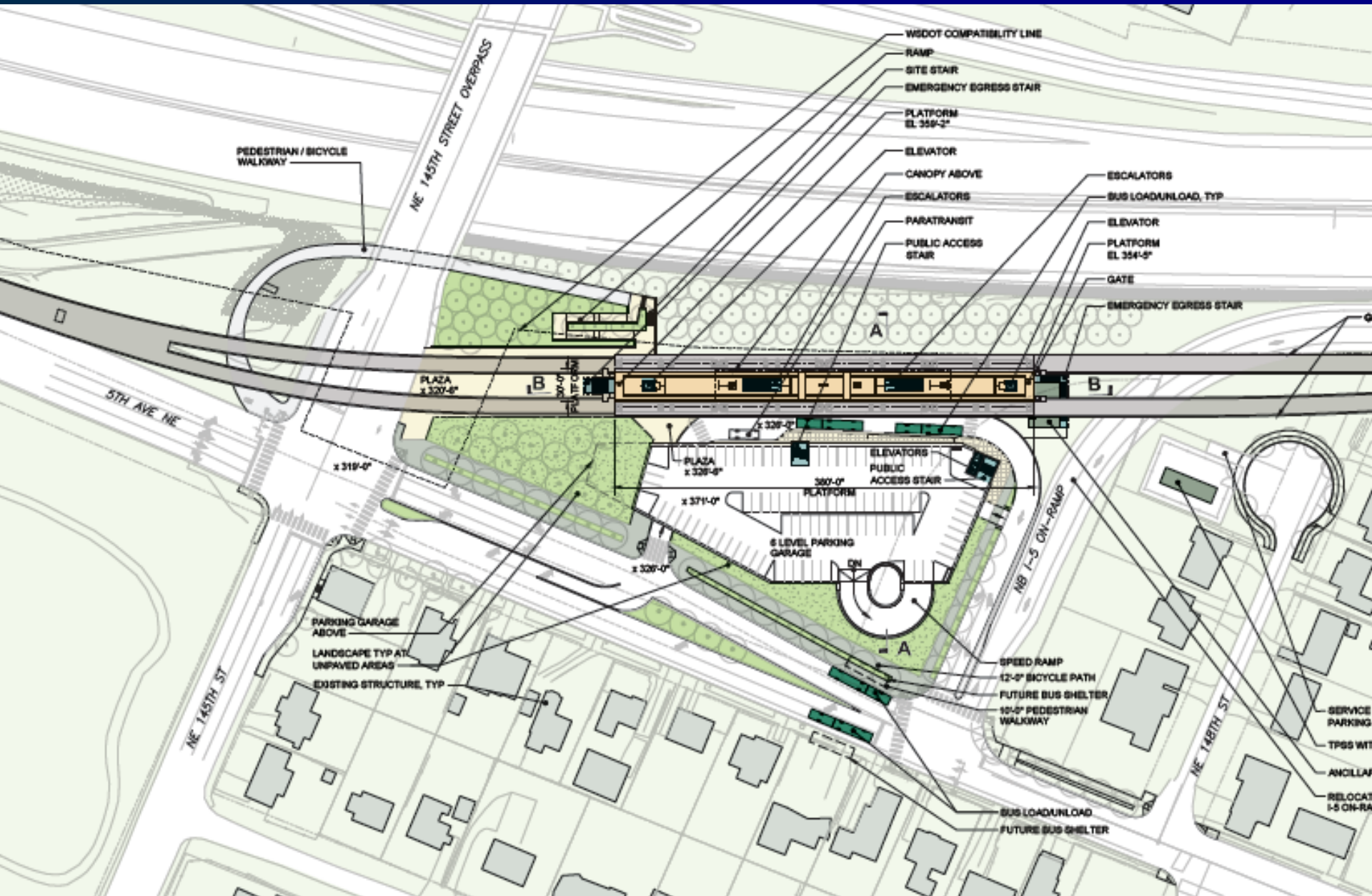
Begin final design	March 2016
Initial Station Design and ST Open House	Q3 2016
60% Design and ST Open House	Q1 2017
90% Design and ST Open House	Q3 2017
Begin Construction	2018
Open for Service	2023



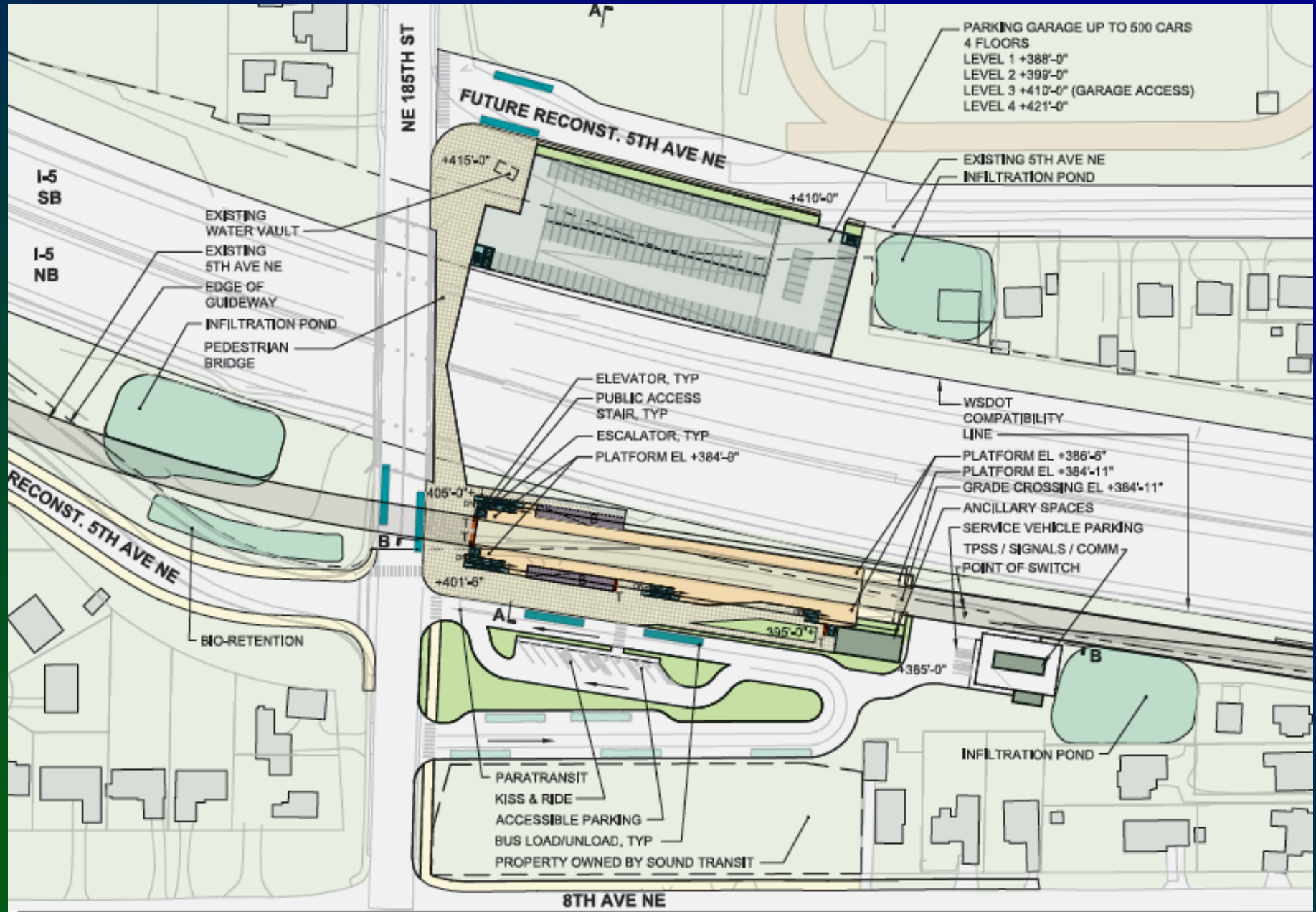
Design Outreach and Station Naming



Shoreline 145th Street Station



Shoreline 185th Street Station

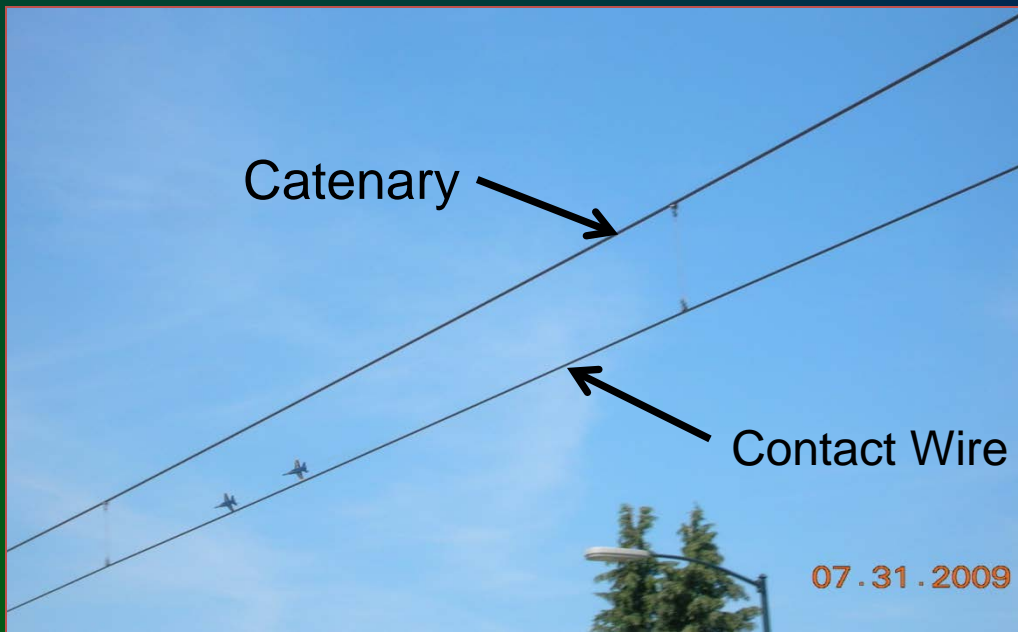


Link Light Rail Basics



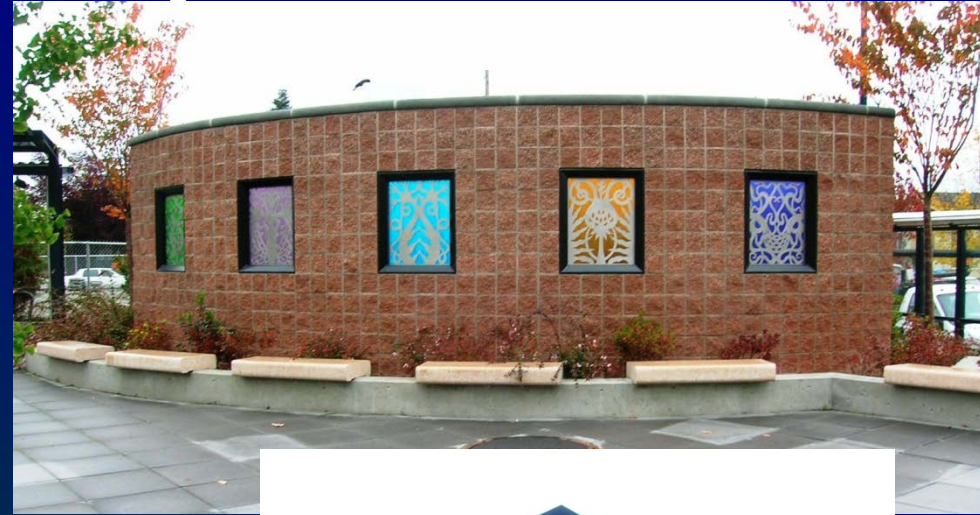
Link Light Rail System

- Light Rail is versatile: at-grade, elevated, tunnels
- Electrically powered light rail vehicles (LRVs) run on railroad tracks
- Power delivered by Overhead Contact System (OCS)



Link Light Rail Systems

- Traction power substations (TPSS)
- Signals buildings
- Communications cabinets
- Overhead Contact System (OCS)



Central Link Light Rail Vehicles

- 4 car consist – 380 feet long
- Low floor vehicles
- Wheelchair spaces at each door
- Bikes allowed on Link





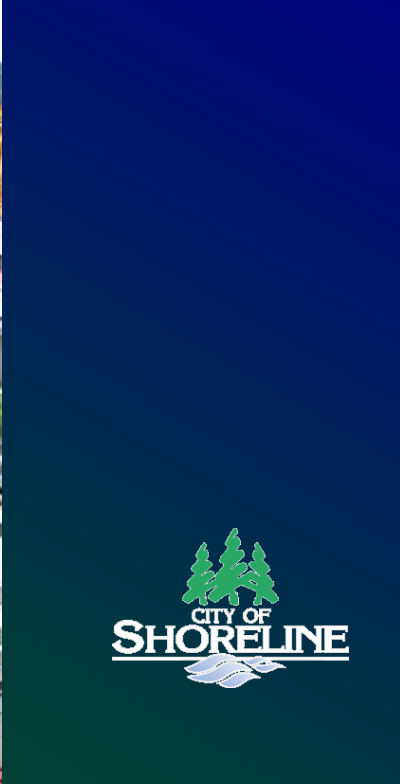




South Boeing Access Road, Tukwila, Washington, United States
Address is approximate



Report a problem













TriMet, Portland, Ore

Stations - Balanced Approach to Design

A. Elements of Continuity

- Station layout
- Families of parts / materials
 - standard glazing sizes
 - paving / way-finding
 - light fixtures
 - color palette
- ST signage



B. Elements of Differentiation

- Type of station
- Community input
- STart program



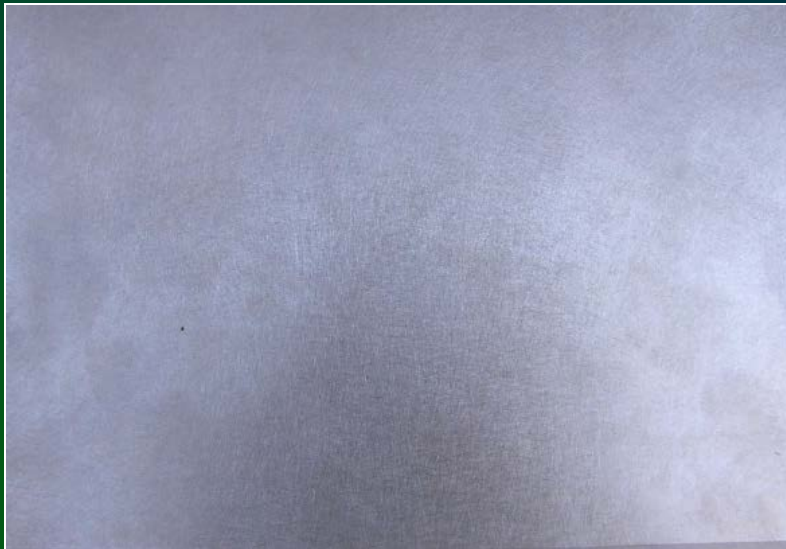
System-wide Elements

- Station signage
- Tactile & way-finding pavers



Color & Finishes

- Standard Link Paint Colors
- High Performance Coating
- Primarily Steel Structure
- Glass for visibility & light
- Stainless Steel for durability
- Materials with integral color



Bike Facilities

- Parking based on patronage
 - Bike racks
 - Bike lockers
 - Bike cages



Ticket Vending Machines & Orca Card Readers



06.16.2009

Passenger Emergency Telephones, Speakers & Closed Circuit TV's



NiceVision - Control

Channels Pages Maps Alarms File Tools Help

Display page: 9000

NICE

- Test Page
- USS ENTRANCES
- USS MEZZANINE
- USS PLATFORM
- USS-WLS TUBE N8 & SB
- VMS signs
- WLS ENTRANCES
- WLS MEZZANINE
- WLS PLATFORM
- WLS CPS CUT & COVER
- _DSTT OPEN NORTHBOUND
- _DSTT OPEN SOUTHBOUND
- ELEV CAMS CPS/WLS/USS
- ELEV CAMS PSS/IDS
- SODD
- STADIUM
- OMF
- BHHT
- MT BAKER
- COLUMBIA CITY
- OTHELLO
- RAINIER
- TUKWILA



NiceVision Control

C15-CAM-01 Live x(1) (100%)
 Tuesday, May 12, 2009 1:06:44 PM

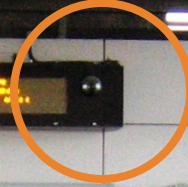
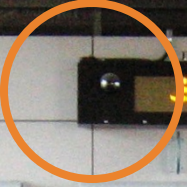
Control panel with play, stop, and volume buttons.

▲ 0 Open alarms

29	C29-DRS-01-Rainier Beach	C29-CAM-05A	5/12/2009 10:37:18 AM	5/12/2009 10:37:59 AM
30	C29-DRS-01-Rainier Beach	C29-CAM-05A	5/12/2009 10:33:56 AM	5/12/2009 10:34:16 AM
31	C29-DRS-01-Rainier Beach	C29-CAM-05A	5/12/2009 10:36:18 AM	5/12/2009 10:36:58 AM
32	C29-DRS-01-Rainier Beach	C29-CAM-05A	5/12/2009 10:35:43 AM	5/12/2009 10:36:18 AM
33	C29-DRS-01-Rainier Beach	C29-CAM-05A	5/12/2009 10:37:51 AM	5/12/2009 10:38:13 AM
34	C29-DRS-01-Rainier Beach	C29-CAM-04A	5/12/2009 10:36:59 AM	5/12/2009 10:38:21 AM
35	C29-DRS-01-Rainier Beach	C29-CAM-04A	5/12/2009 10:36:15 AM	5/12/2009 10:37:02 AM
36	C29-DRS-01-Rainier Beach	C29-CAM-04A	5/12/2009 10:35:27 AM	5/12/2009 10:35:46 AM
37	C29-DRS-01-Rainier Beach	C29-CAM-04A	5/12/2009 10:35:42 AM	5/12/2009 10:36:23 AM

Windows desktop background with various icons and taskbar.

Taskbar: start, NiceVision - Control, NiceVision - Investigator, SiteBuilder



Link Light Rail
Westlake/Seattle

Link Light Rail
SeaTac/Airport

Link Light Rail
SeaTac/Airport

EXIT

TICKETS

TICKETS

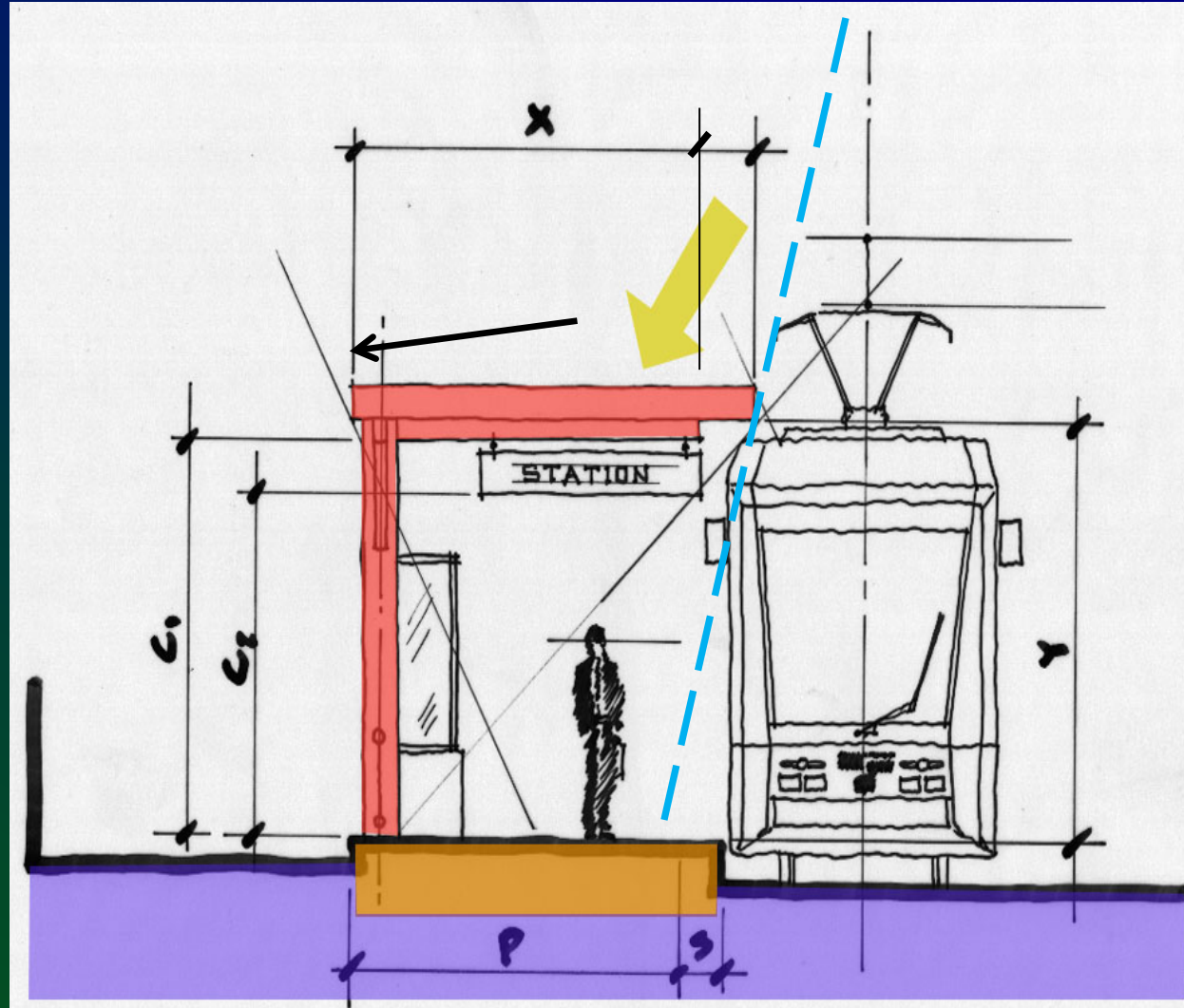
TICKETS

TICKETS

Westlake/Seattle
Trains leave from
both platforms

Weather Protection

- Based on Ridership (30% min)
- Roof slope
- Rain angle 15°
- Signage / VMS
- Windscreens



Windscreens



07.19.2009

Landscape Criteria

Standard Plant List – Native & Adaptive



Types of Stations



Mount Baker Station (Elevated)







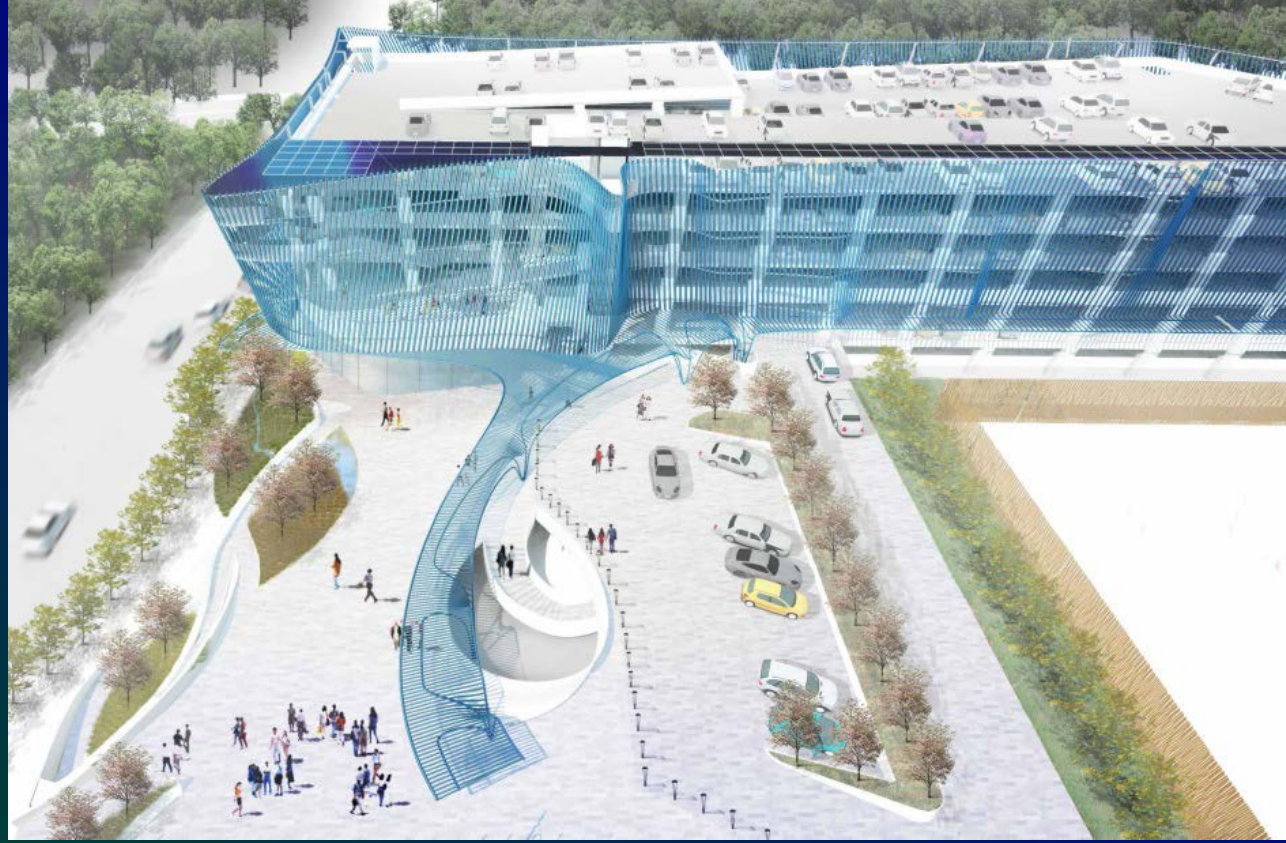


Tukwila International Boulevard Station

Angle Lake Station



Angle Lake Station Garage



Bellevue Downtown Station





WEST ENTRY VIEW



CANOPY ACCENT GLASS



CANOPY GLASS



TICKET VENDING WALLS



PAINTED STEEL



GLAZING MULLIONS



EAST ENTRY VIEW

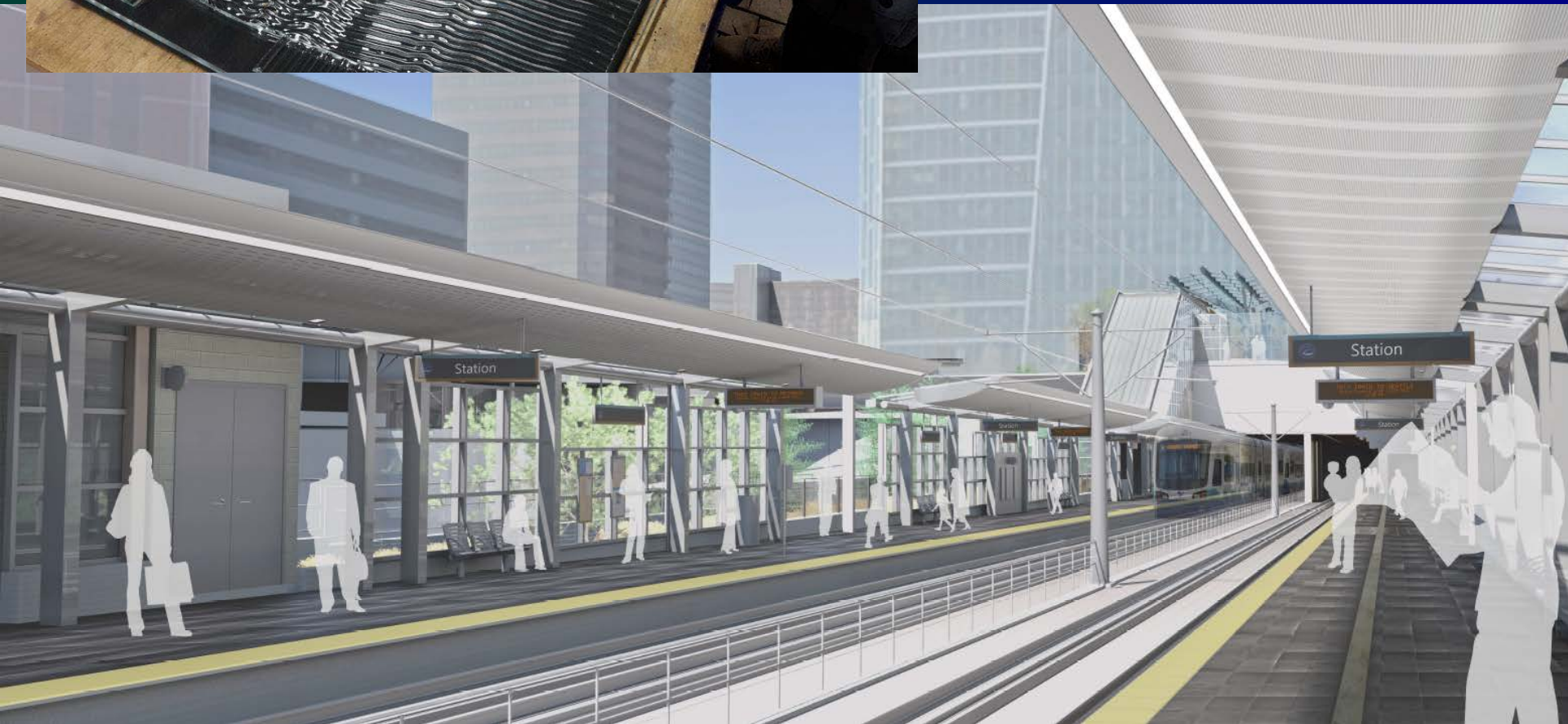
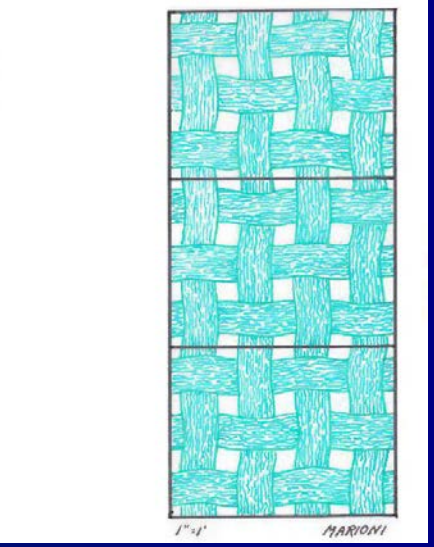
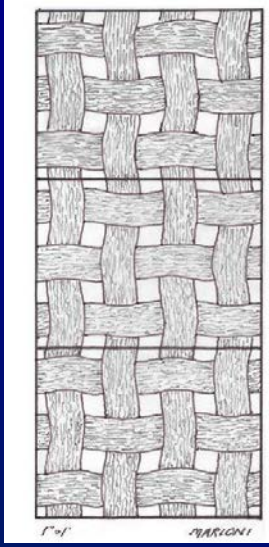
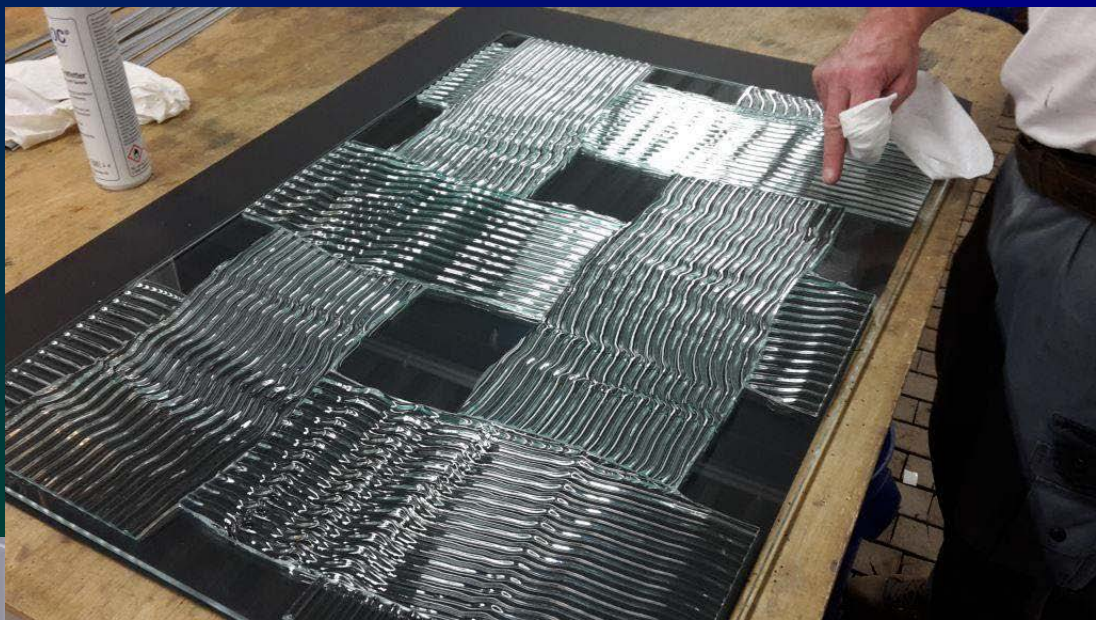


EAST ENTRY WALLS



EAST ENTRY CEILING

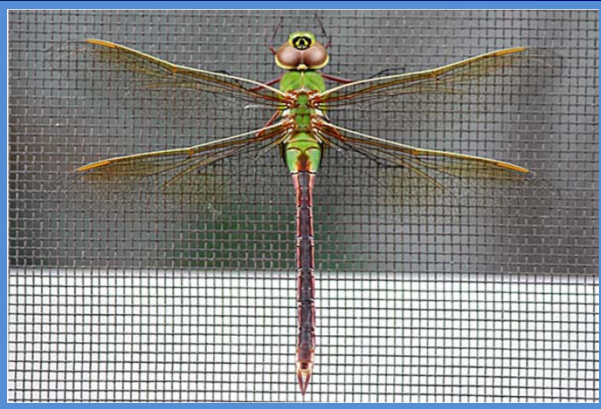




Northgate Station







South Bellevue Station





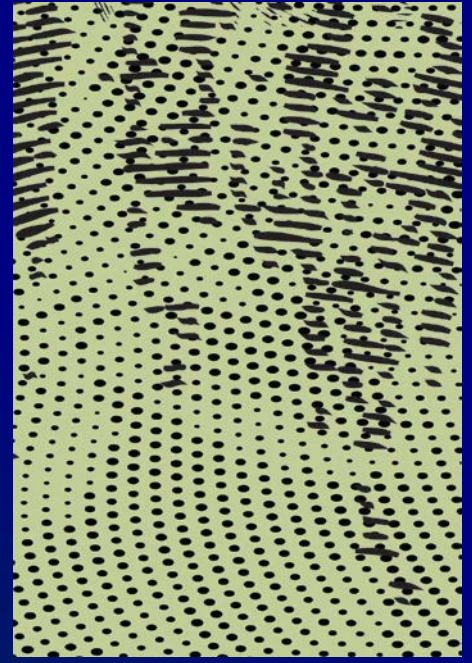
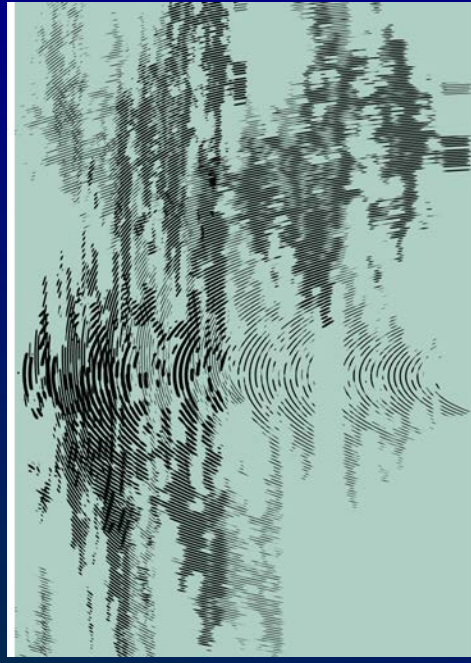
Station Name

Station Name

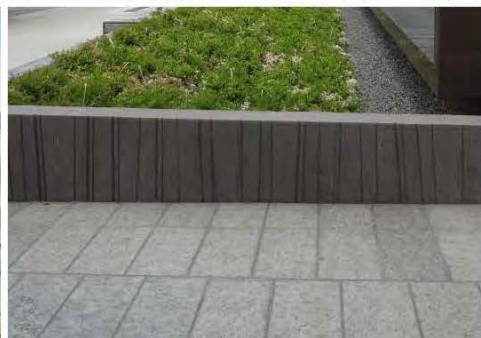
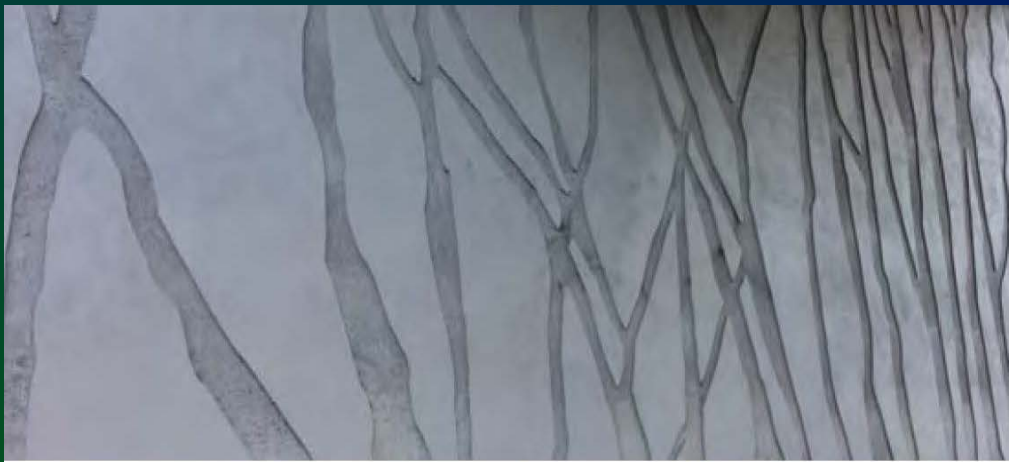
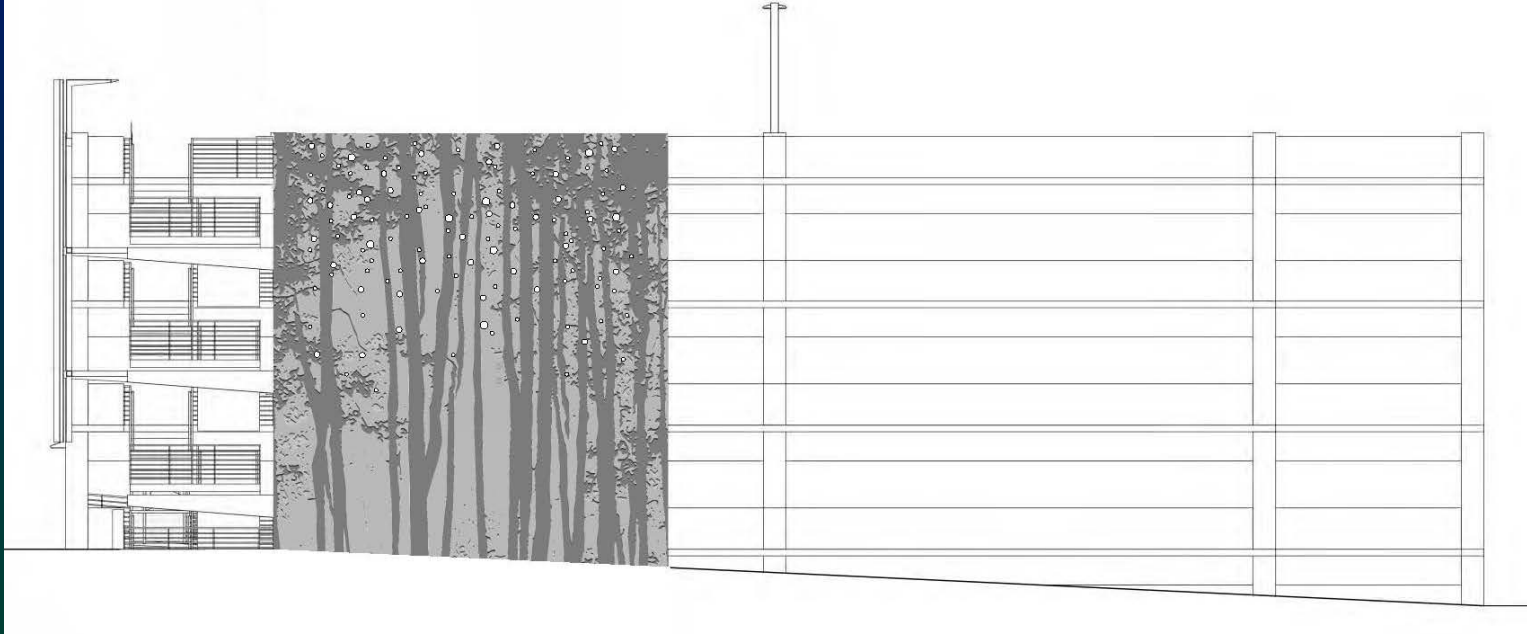


Station Name





South Bellevue Station Garage



Wilburton Station

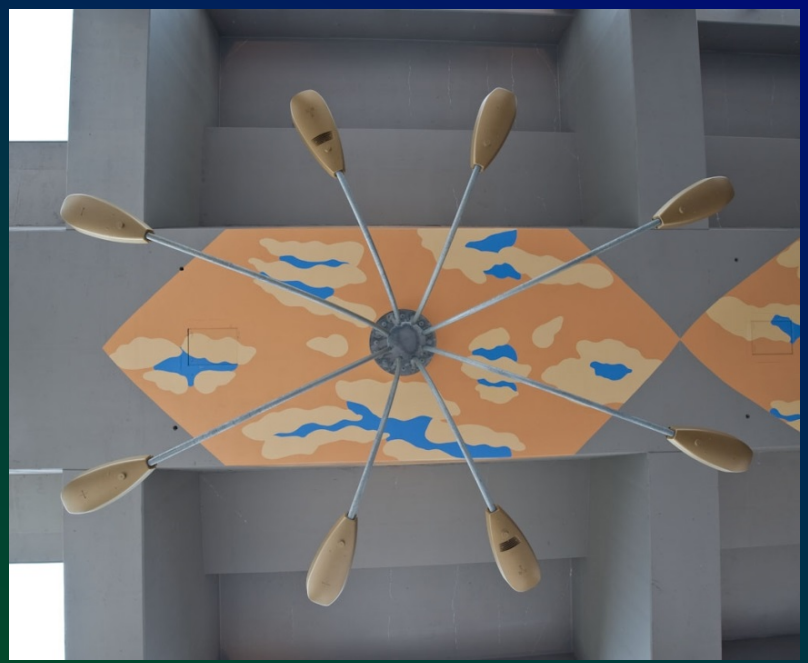


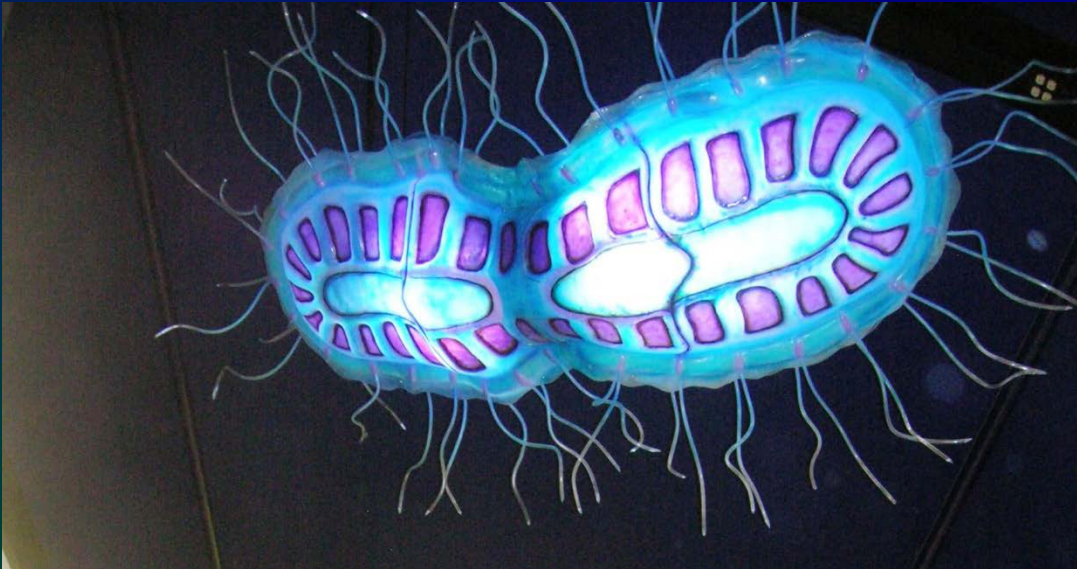


STart Public Art

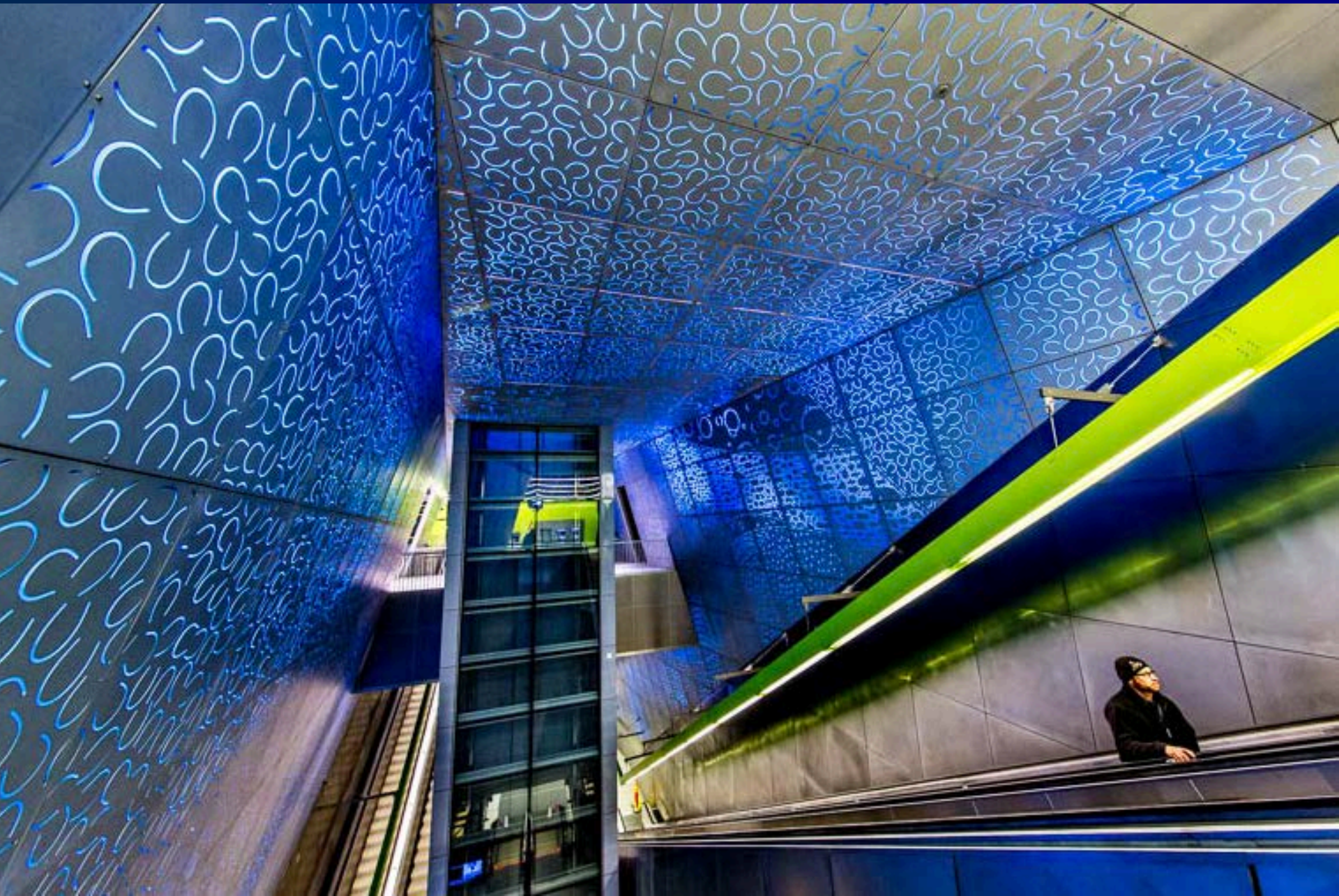


11.07.2008 16:07











soundtransit.org/LLE

Next: Open House Q&A

