

# Thornton Creek LID & Basin Plan Discussion

City Council Meeting  
June 15, 2015



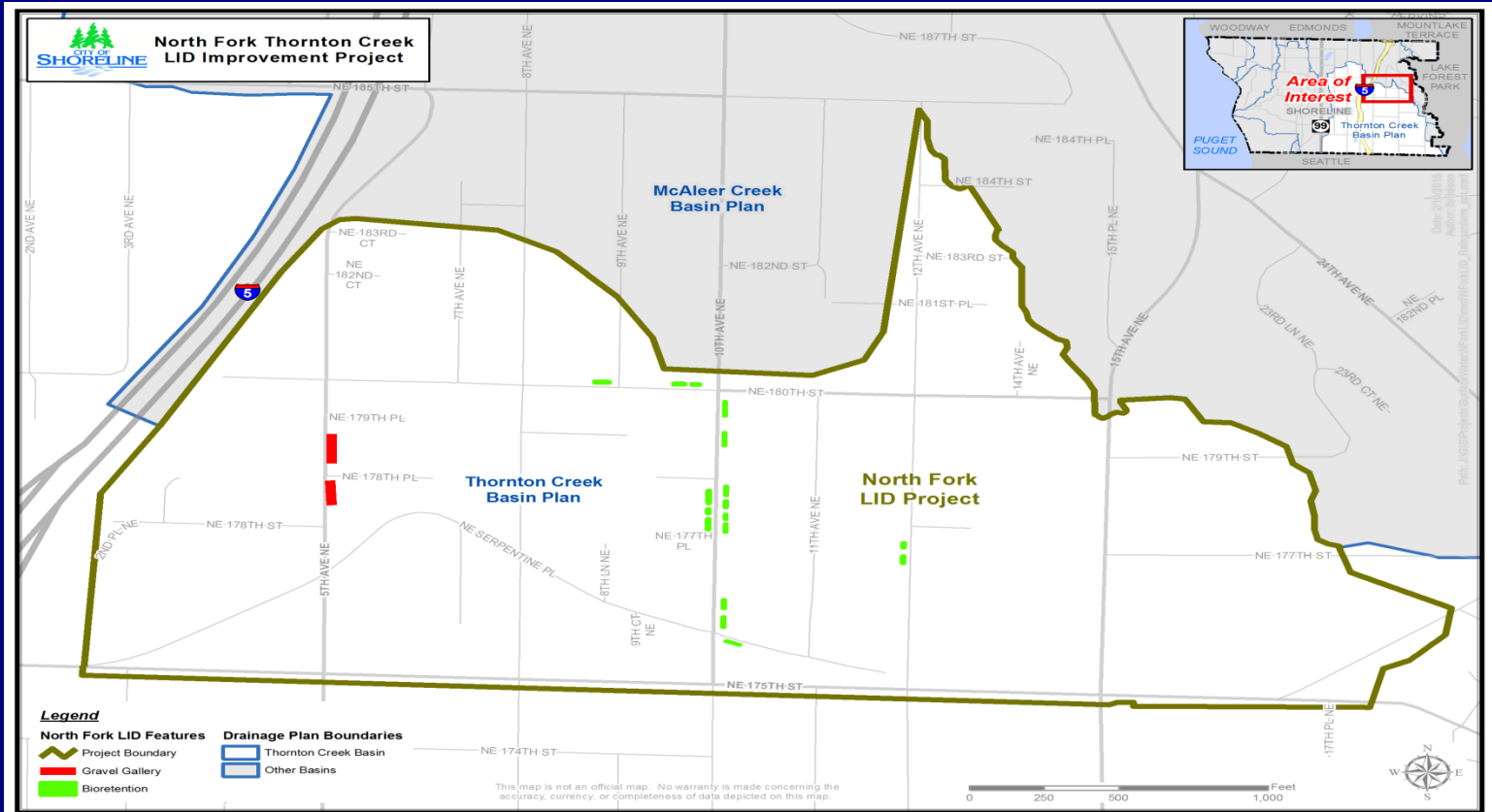
# Purpose

- Review results from the North Fork LID Project
- Review the status of the basin planning efforts
- Discuss the basin plan findings
- Review implications of basin plan findings

# North Fork LID Project

- 164 potential sites were evaluated
- 40 preferred were identified
- 17 facilities were constructed
  - 15 bio-retention facilities
  - 2 underground infiltration systems

# Project Locations



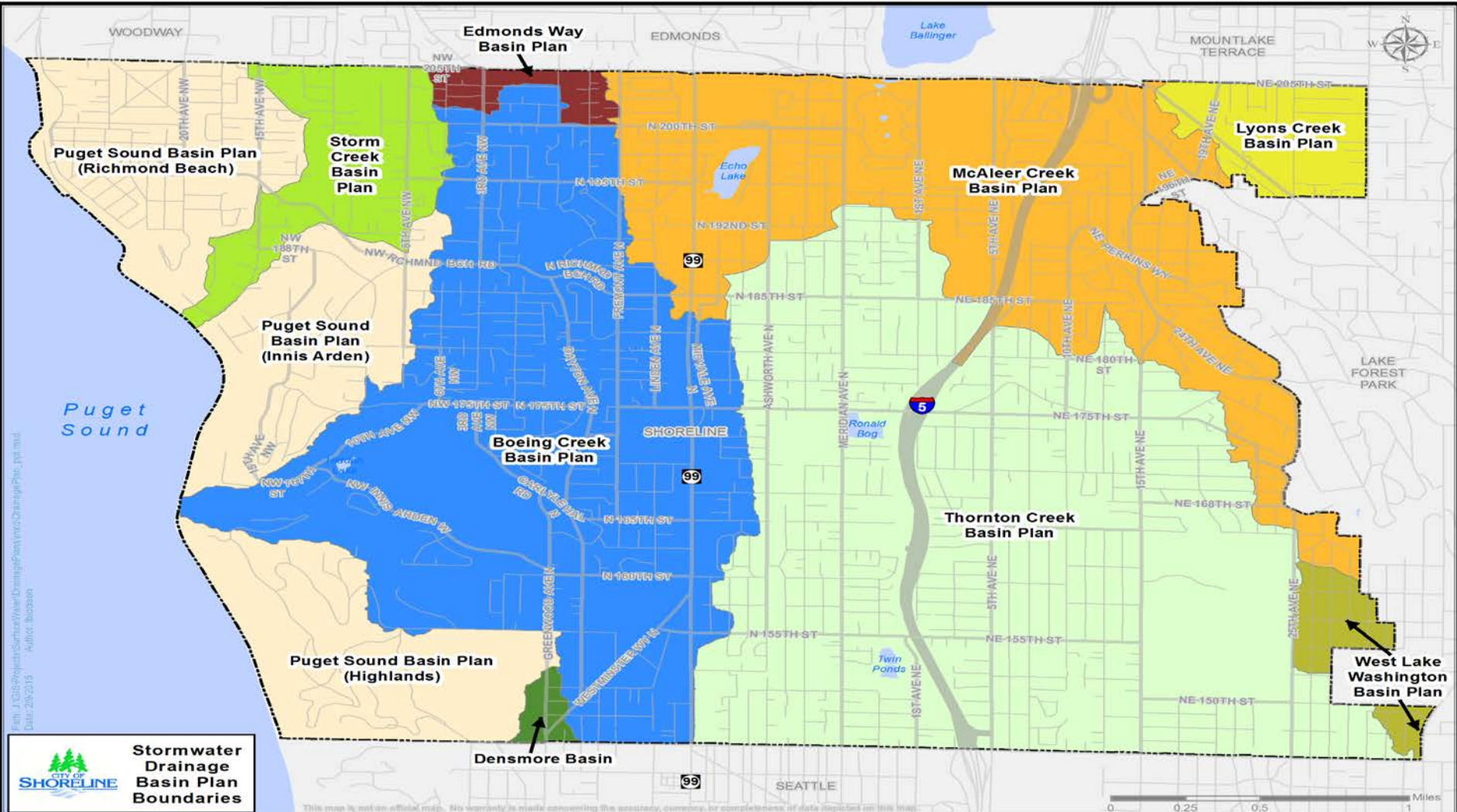
# Photos



# Basin Planning

- The City has 11 drainage basins
- Planning is complete on the 5 largest basins
- The remaining 6 basins are being completed as a single effort





File: J:\GIS\Projects\Sarum\Water\DrainageBasinPlan\Map\DrainagePlan\_1.pdf.mxd  
 Date: 2/2/2015 Author: thobason


**Stormwater  
Drainage  
Basin Plan  
Boundaries**

This map is not an official map. No warranty is made concerning the accuracy, currency, or completeness of data depicted on this map.

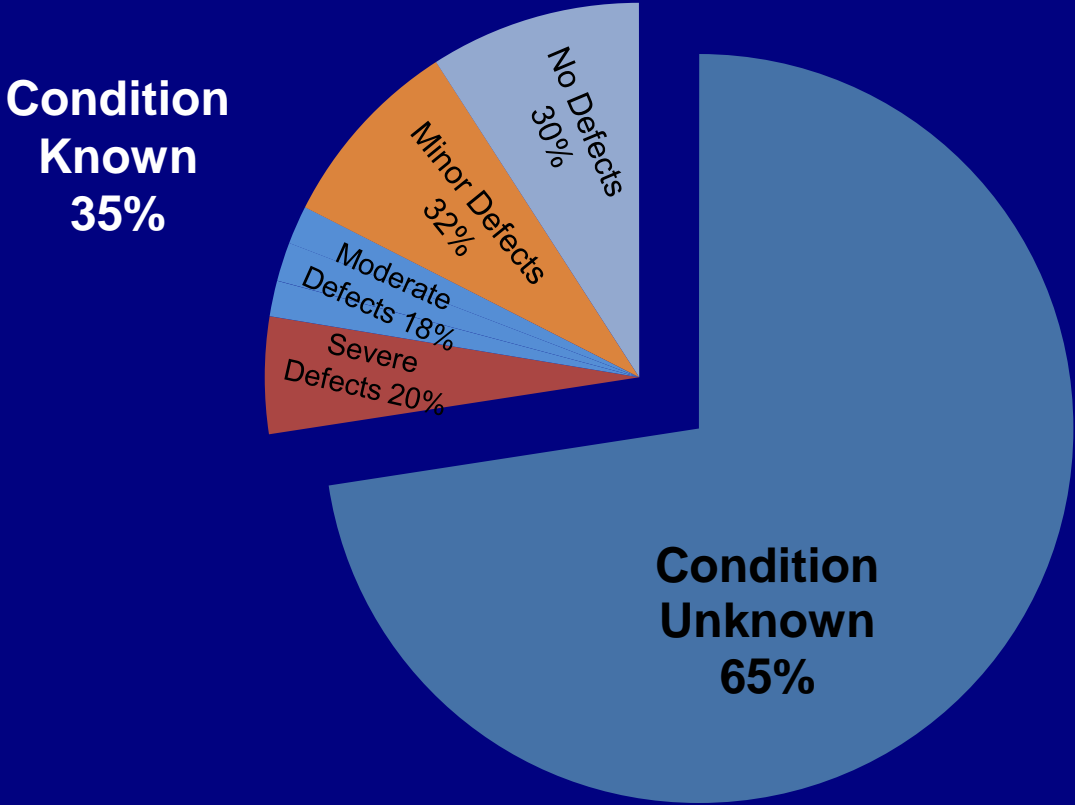
0 0.25 0.5 1 Miles

# Basin Plan Findings

- Approximately 48 miles of pipe has been inspected
- Approximately 7 miles of defective pipe was found
- Approximately 3.8 miles of “new” defective pipe is not included in the pipe repair and replacement project
- 130 other improvement projects have been identified



# Basin Planning Implications



# Basin Plan Implications

- Finding more deteriorated pipe is certain
- Capacity problems and other system needs also exist
- Cost estimate for 3.8 miles of “new” defective pipe is \$5.6 million
- Prioritizing projects systematically and with defined criteria is essential

# Next Steps

- Complete inspections and condition assessment work
  - Puget Sound Basins – June 2016
  - Thornton Creek Basin – 2017 (estimate)
- Create a prioritization system based on asset management principals
- Prioritize infrastructure improvements
- Incorporate results into updated Surface Water Master Plan

# Closing

- A future topic(s) for the City Council (if desired)
  - Discuss condition rating and priority ranking system
- Questions?