

# State of the City Shoreline, Washington

Wednesday, June 3, 2015

20 Years of Progress!



**CELEBRATING**



**YEARS OF PROGRESS**



**CITY OF SHORELINE**



VISION: Shoreline  
P O Box 7357  
Shoreline, WA 98133-2357

Bulk Rate  
U. S. Postage  
**PAID**  
Seattle, WA  
Permit #6066

- Bring our tax dollars home!*
- Control local service levels!*
- Protect our fire department and schools!*
- Keep our community together!*
- Decide our own future!*

***Vote YES, September 20!***









# CITY *Currents*

Volume 1, No. 1

August 1995



*Shorewood High School students plans towards a sustainable Shoreline were presented to the City Council at the July 31 meeting. Shorewood teacher Gery Nunnelee chose the most realistic plans from his spring '95 ninth grade World Geography classes' Washington State Studies groups. The students used Seattle's Comprehensive Plan as a model. Top row, left to right: Councilmember Larry Bingham, student Katherine Beauchamp, student Kevin Sagan, Deputy Mayor Robert Ransom, Mayor Connie King, teacher Gery Nunnelee. Bottom row, left to right: Councilmembers Cheryl Lee, Scott Jepsen, Linda Montgomery, and Ron Hansen.*



**CELEBRATING**



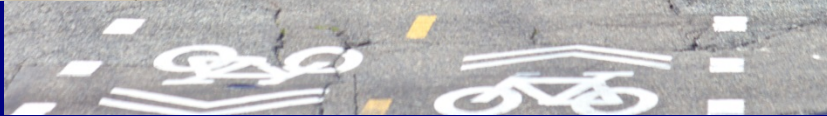
**YEARS OF PROGRESS**



**CITY OF SHORELINE**









# Locally delivered human services

- Center for Human Services
- Hopelink Shoreline Center
- New Beginnings
- Crisis Clinic
- Compass Housing Alliance
- Senior Services
- Food Lifeline

# Human services in Shoreline

- Poverty affects 12.8% of Shoreline's population
- Federal poverty level for a family of three is an annual income of \$20,090 or below

# Shoreline's response

- In 2015, Shoreline taxpayers will provide close to \$400,000
- Money will help support 15 separate agencies offering 28 separate programs
- These programs serve approximately 10,000 Shoreline residents per year



## PADRES UNIDOS - FAMILIAS SEGURAS

### Talleres para Padres

Intégrate a la serie de 5 talleres en Español donde aprenderás como formar una comunidad segura para tus hijos!

Recibirás un certificado al completar todos los talleres. No tienen costo y son únicamente para padres/ madres de familia. NO incluye cuidado de niños.

Se proveeran refrigerios.

#### RSVP

El cupo es limitado – llama ahora para registrarte (206) 801-2719 o envía un correo electrónico a [dahlia.corona@kingcounty.gov](mailto:dahlia.corona@kingcounty.gov) con tu nombre y número de teléfono.



**HORA:** 6:30 to 8:15 p.m.

**LUGAR:** Shoreline Water District, 1519 NE 177<sup>th</sup> Street, Shoreline

#### JUEVES, OCTUBRE 23

Disciplina Positiva y Estilos de Comunicación Efectiva: Aprende habilidades para la crianza de tus hijos; Ximena Grollmus M. Ed. y Lupita Zamora

#### JUEVES, OCTUBRE 30

Violencia Doméstica y Abuso Infantil: Concientizar, intervención de las autoridades y como afectan nuestras comunidades; Departamento de Policía de Shoreline

#### JUEVES, NOVIEMBRE 6

Bullying: Aprende las señales de bullying y como ayudar a tus hijos; Lupita Zamora y Circulo de Mujeres de Bothell

#### JUEVES, NOVIEMBRE 13

Las Drogas en Nuestra Comunidad: Las leyes y los efectos de la marihuana y otras drogas; Detective de la Policía de Shoreline C. Kieland.

#### JUEVES, NOVIEMBRE 20

Liderazgo: Lupita Zamora

Presentación especial del conferencista Roberto Carcelén:

Primer esquiador Peruano, Olimpiadas 2014. Motivación y liderazgo. Aprende de su historia y como podemos cumplir nuestras metas y sueños.

Tu familia - Tu comunidad - Tu Departamento de Policía



The City's neighborhood watch program is called Shoreline Watch and we encourage you to form a group in your neighborhood.

Shoreline Police are ready to partner with your neighborhood to provide crime prevention education and tips for protecting your homes, property and each other.

### To get started:

- Contact your neighbors and set an evening to meet.
- Contact Officer Steve Perry at [steven.perry@kingcounty.gov](mailto:steven.perry@kingcounty.gov) or (206) 801-2764 to request an officer attend your meeting.
- After your initial meeting, schedule an annual get together to reconnect and discuss safety concerns.

**SHORELINE  
WATCH**

**Report suspicious behavior immediately!**  
Call 911

**24-Hour Police Non-Emergency**  
(206) 296-3311

**Shoreline Police Department**  
1206 N 185th Street  
Shoreline, WA 98133  
(206) 801-2710  
Hours: M-F 8:30 a.m. to 5:00 p.m.

**Police Community Outreach Office**  
Shoreline City Hall 2nd floor  
Call for availability: (206) 801-2764

**Shoreline City Hall**  
17500 Midvale Avenue N  
Shoreline, WA 98133  
(206) 801-2700  
Hours: M-F 8:00 a.m. to 5:00 p.m.

**On the web**  
[shorelinewa.gov](http://shorelinewa.gov) & [shorelinewa.gov/police](http://shorelinewa.gov/police)  
[facebook.com/shorelinewa](https://facebook.com/shorelinewa)  
[twitter.com/shorelinewa.gov](https://twitter.com/shorelinewa.gov)



**CONTACT US**

**PREVENT**



**BURGLARY**



**IDENTITY  
THEFT**



**CAR  
PROWLS**



**MAIL THEFT**

**KEEP OUR  
COMMUNITY SAFE**

Year after year, Shoreline proves to be a safe community for residents, businesses, and visitors. The active engagement of our residents and business owners is a key part in keeping our city a safe place to live and work.

### Ways you can help:

- **Form relationships** with your neighbors and set up a neighborhood watch program.
- **Report suspicious behavior** to 911 immediately and encourage your neighbors and employees to do the same.
- **Secure homes, vehicles, and businesses** to make crime more difficult for criminals.
- **Participate in work parties in the parks.** Well-kept and busy parks discourage illegal activities.
- **Volunteer** to mentor young people who need positive support from adults.

Effective crime prevention is a team effort between community members and Shoreline Police.

**CRIME  
PREVENTION**

# MILLION **STEP** CHALLENGE

**At Paramount School Park**

How many laps can you walk around Paramount School Park in May? In partnership with Ridgecrest Neighborhood Association. Sponsored by CrossFit Hailstorm, Iora Healthcare and Fire and Earth Kitchen.

## **OPENING EVENT**

Saturday, May 2nd, 9am

Ridgecrest Annual Plant Exchange directly follows event.

## **CLOSING POTLUCK & AWARDS**

Sunday, May 31st, 6pm

**MORE INFORMATION**  
[shorelinewa.gov/STEPS](http://shorelinewa.gov/STEPS)



# MILLION **STAIR** CHALLENGE

**At Richmond Beach Saltwater Park**

There are 188 stairs at Richmond Beach Saltwater Park and we want to know how many flights you can climb during the month of June. Challenge yourself, compete against others and win prizes in this month long event.

## **SAVE THE DATE**

## **CLOSING POTLUCK & AWARDS**

Wednesday, July 1st, 6pm

Picnic Shelter @ bottom of stairs

**MORE INFORMATION**  
[shorelinewa.gov/STAIRS](http://shorelinewa.gov/STAIRS)





Keep moving - all summer long!

JUMP ROPE

TENNIS

SLIP N' SLIDE

SKIP

BIKE RIDE

SWIM

BASEBALL

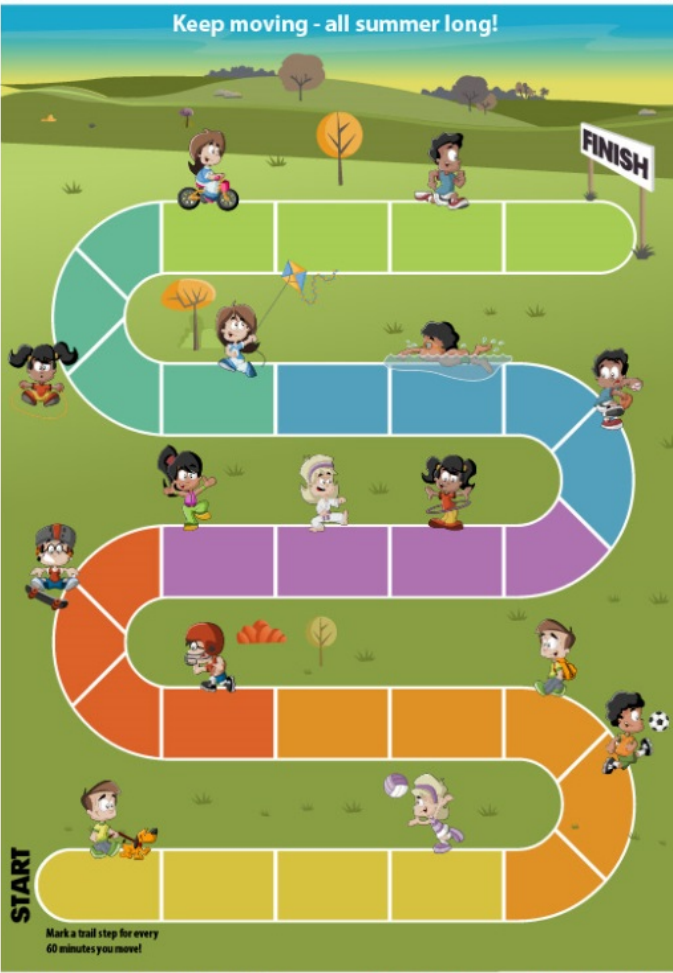
RUN

DODGEBALL

HIKE

HULA HOOP

SOCCER



**START**

**FINISH**

Mark a trail step for every 60 minutes you move!

WALK

SKATEBOARD

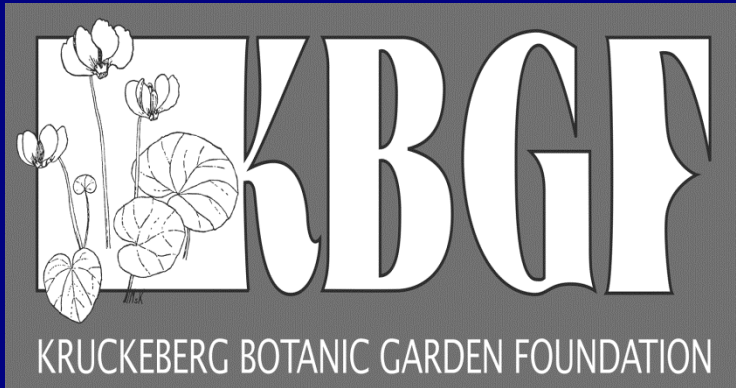
PLAY TAG

HOPSCOTCH





Shoreline  
Historical  
Museum







## Adult Programming



# Choices Program



# Camp Shoreline





**CELEBRATING**



**YEARS OF PROGRESS**



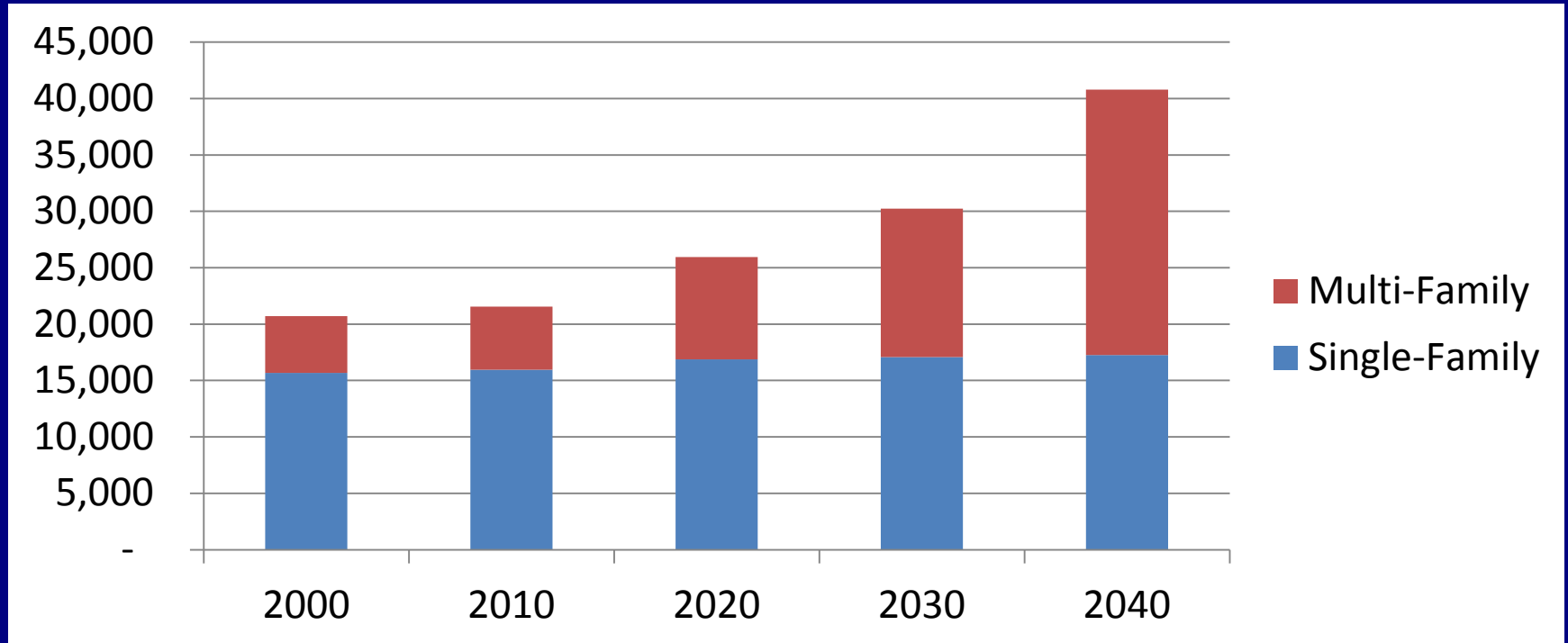
**CITY OF SHORELINE**



# Projected Household Growth

- Puget Sound Regional Council
  - 2005: 20-Year Growth for Shoreline – 5,000 new households, 5,000 new jobs
  - 2014: 2020-2040 projections even higher

# Growth in Multi-Family Housing





Property of Shoreline Historical Museum



**1936**

**175<sup>th</sup> & Aurora**



An aerial photograph of a city grid, likely San Francisco, showing a dense network of streets and buildings. A major highway, I-5, runs vertically through the center-right of the image. A horizontal street, 175th & Aurora, is visible in the middle. The year '1970' is printed in large white letters at the top. Red arrows point to the highway and the street intersection. The image is framed by a dark blue border on the left and right sides.

**1970**

**I-5**

**175<sup>th</sup> & Aurora**



© Michael Brunk



# SHORELINE DEMOGRAPHICS

**2000**



**2013**



0 20 40 60 80 100



# DEMOGRAPHICS 2013

**SEATTLE**



**SHORELINE**



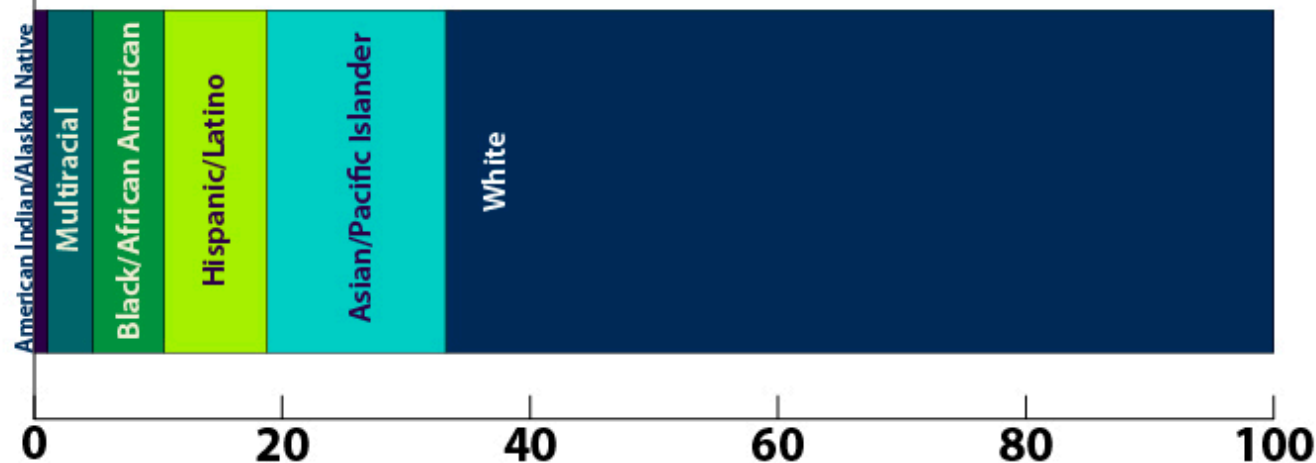
0 20 40 60 80 100

# DEMOGRAPHICS 2013

## SHORELINE SCHOOL DISTRICT



## SHORELINE FULL POPULATION



# Aging Population

- Second highest percentage of 65+ in King County at 15.2%
- Between 2000 and 2010, median age increased from 39.3 to 42.1 – seventh oldest median age in Washington
- 60+ population in King County expected to double by 2025





# Affordable Housing

- 1995 – 5.7% of Shoreline residents lived below poverty line.
- Today – 12.8% live below poverty line.
- Half of all renters pay more than 30% of their income for housing.
- 2014-2015 – 346 students in Shoreline School district were homeless.

# Ronald Commons

First very affordable housing of its kind built in Shoreline in a decade.

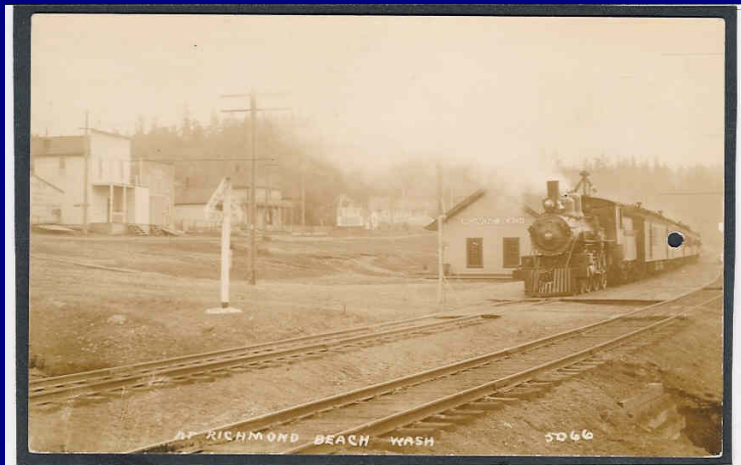


# Vision 2029

“Shoreline in 2029 is a thriving, friendly city where people of all ages, cultures, and economic backgrounds love to live, work, play and, most of all, call home.”



# Richmond Beach – 125th



# Shoreline Community College – 50th



# Shoreline-Lake Forest Park Senior Center – 40th



Shoreline School District –  
2014-2015 is its 70th school year



# Shoreline Historical Museum – 40th year

A decorative banner with a light beige background and a dark brown border. The banner features a faint, sepia-toned historical photograph of a group of people in a room. The text is centered and reads:

**SHORELINE HISTORICAL MUSEUM**  
**SHORELINE, WASHINGTON**

Celebrating the History of Shoreline and its Community

# Shoreline-Lake Forest Park Arts Council – 25<sup>th</sup> in 2014



North City Water District –  
85<sup>th</sup> in 2016







# What can you do?

1. Enjoy your community;
2. Participate in the great summer activities we have planned; and
3. Celebrate Shoreline!

Thank you!

