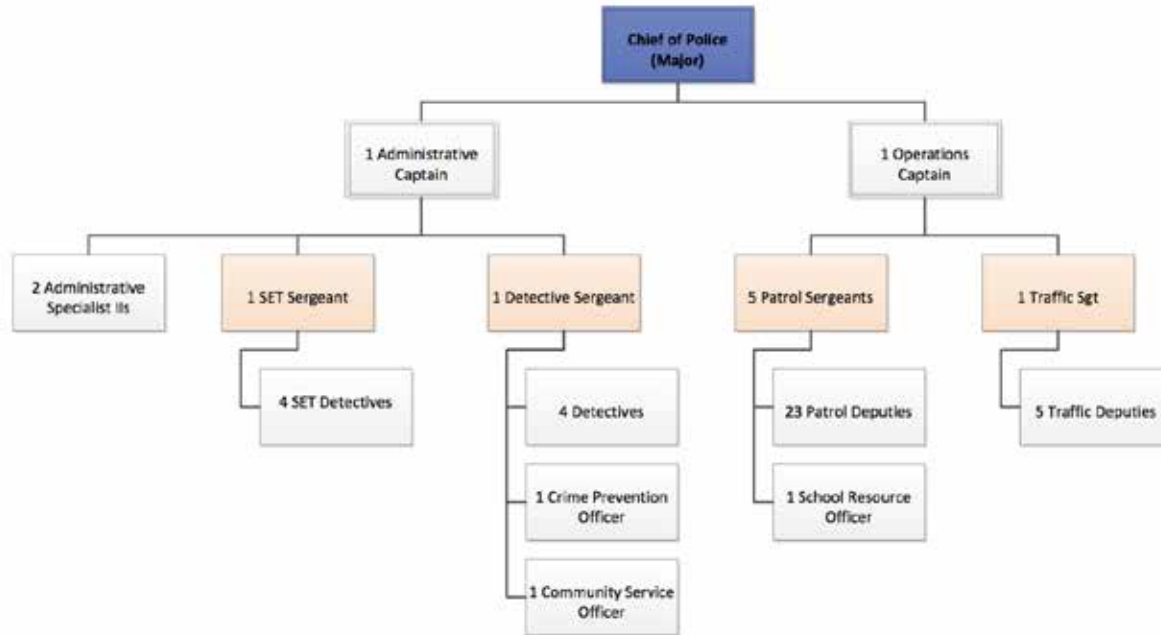


2014 Police Services Report

Chief Shawn Ledford, Captain Scott Strathy
and Captain Mark Konoske
May 4, 2015



Shoreline Police



Cost Comparison

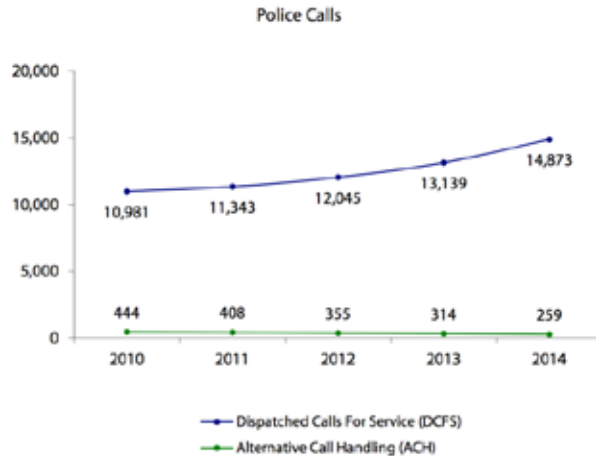
City	Cost/Capita	Population	Police Budget	Sworn/1000
Shoreline	\$204	53,990	\$10,839,000	0.97
Edmonds	\$215	39,950	\$8,574,000	1.33
Kirkland	\$236	82,590	\$19,529,000	1.17
Lk Forest Pk	\$266	12,750	\$3,390,000	1.41
Bellevue	\$281	134,400	\$37,726,000	1.32
Bothell	\$285	41,630	\$11,849,000	1.44
Lynwood	\$367	36,030	\$13,225,000	1.99
Redmond	\$381	57,700	\$21,959,000	1.49
Seattle	\$451	640,500	\$288,668,000	2.12

Calls for service

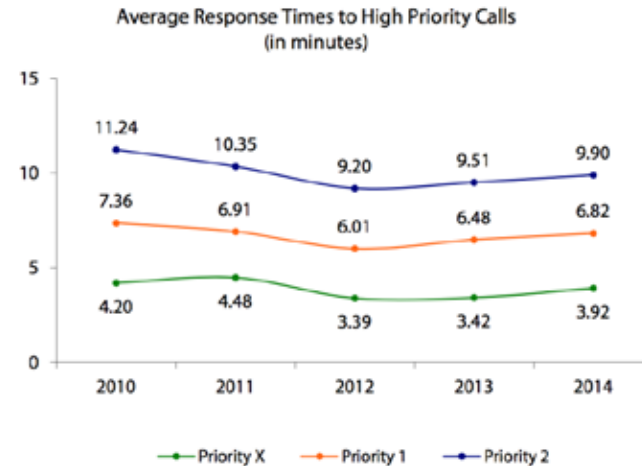
u 14,873 calls for service

u 13,563 on views

u 28, 436
police events



Source: Police Services Data and CAD



Source: Police Services Data



Residential Burglary

- u Bothell (-7%)
- u Shoreline (+7%)
- u LFP (+18%)
- u Edmonds (+21%)

- u Intelligence led policing

- u Pursuits



Community Outreach



- u Shoreline Watch 52 meetings
- u Crime Trends/Burglaries
- u Car prowls (-22%) decrease
- u Aurora Village

Park Safety

- u Echo Lake Park
- u Interurban Trail
- u Officers in our Parks



School Safety



- u Training w/ Lake Forest Park
- u Meridian Park Elementary
- u Training & Equipment

Neighborhood Traffic Safety

- u Community expectations and a data driven focus
- u School zones, neighborhoods, traffic complaint, speed differential map
- u Target Zero Grant (3 officers) – Focus efforts on high collision locations; DUI, seat belts, cell phones
- u Goal - work collaborative with public works to reduce collisions



RADAR

RADAR

SHORELINE POLICE
KING COUNTY, WA



[Click here to view RADAR video](#)



Nurturing Trust



Spanish Speaking Community

- u “I didn’t know how to communicate or act towards the police out of fear. I learned about the police, how they do things and why they do them. It benefits my family and society”
- u “I have a different perspective about the police and the way they help our community”
- u “The information I learned; I now consider myself a leader”
- u “Continue the workshops so that they know the police the police guards and protects the community”
- u “Participation of more police officers”
- u “ Bring the workshops to the schools and King County housing”
- u “I think that each class should be longer because two hours isn’t enough”

