

**145<sup>th</sup> Street Station Subarea Plan  
Draft Environmental Impact Statement  
Public Hearing**

Planning Commission

February 19, 2015



# Alternatives Analyzed in Draft EIS



# Alternative 1—No Action

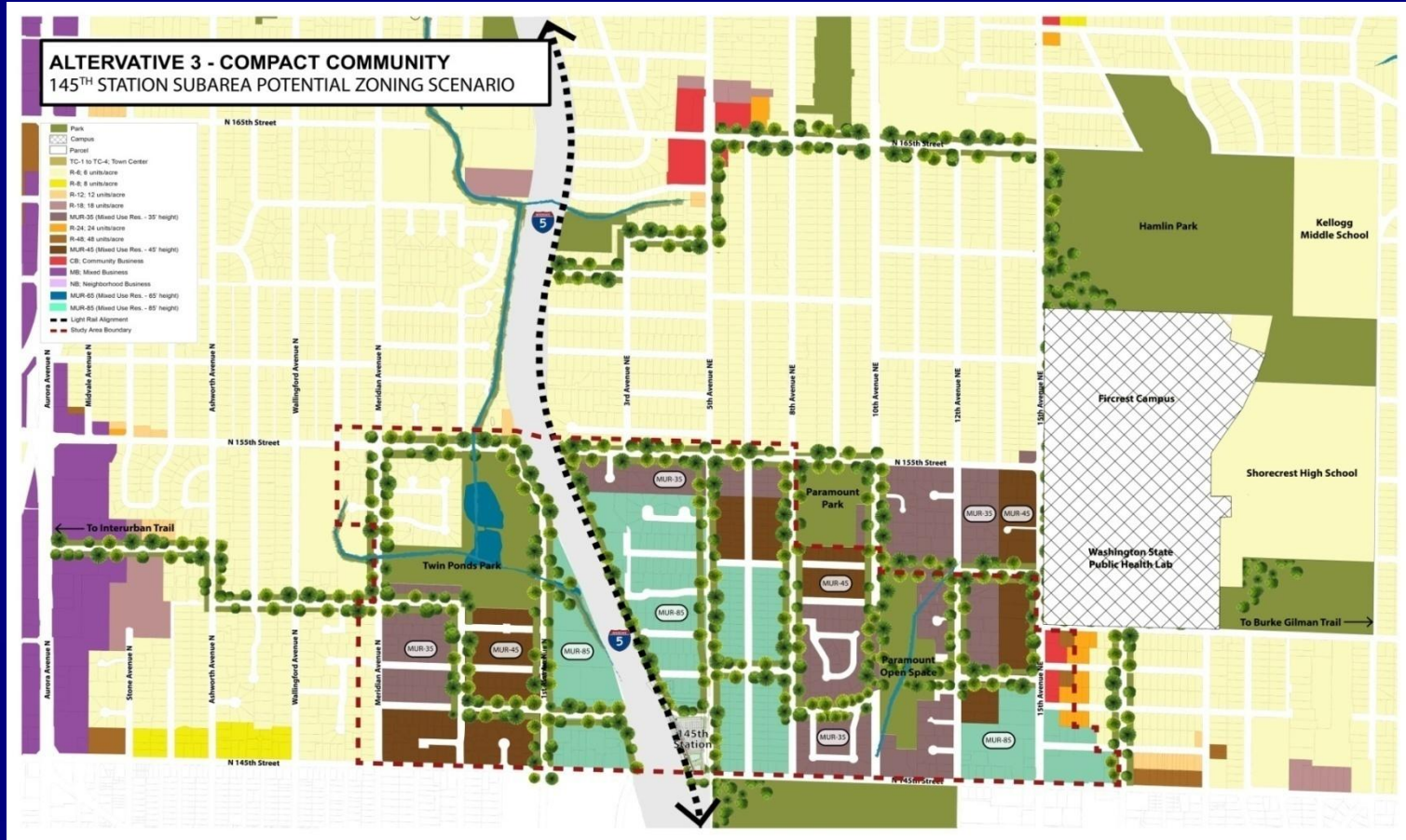


# Alternative 2—Connecting Corridors

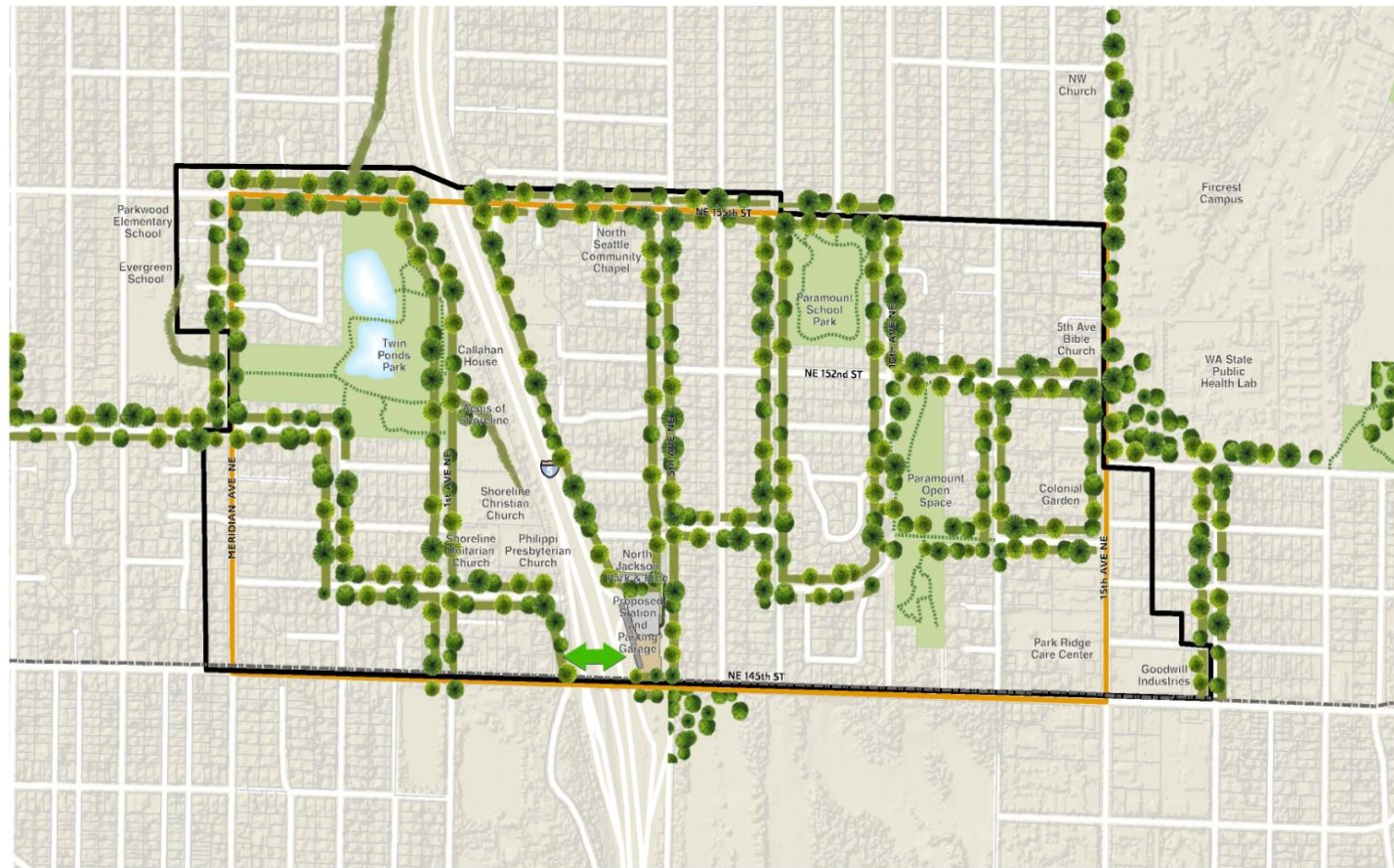




# Alternative 3—Compact Community



# The Green Network



## LEGEND

- Mobility Study Area
- Land Use Study Area
- Shoreline City Limits
- Trail
- Tax Parcel
- City Park
- Potential Improved Pedestrian / Bicycle Crossing (to be analyzed in further detail in the 145th Street Corrido Study)
- Green Network (see description above)



# Green Network



# 2035 Projections

	<b>Current Levels in Subarea</b>	<b>Alternative 1—No Action</b>	<b>Alternative 2—Connecting Corridors</b>	<b>Alternative 3—Compact Community</b>
<b>Population</b>	<b>8,321</b>	<b>Less than 1% Annual Growth Expected</b>	<b>11,208 to 13,364</b>	<b>11,208 to 13,364</b>
<b>Households</b>	<b>3,467</b>		<b>4,670 to 5,681</b>	<b>4,670 to 5,681</b>
<b>Employment/ Jobs</b>	<b>1,595</b>		<b>2,180 to 2,678</b>	<b>2,180 to 2,678</b>



# 2035 Net Population Projections

	<b>Alternative 1—No Action</b>	<b>Average Annual Growth Rates</b>	<b>Alternative 2—Connecting Corridors</b>	<b>Alternative 3—Compact Community</b>
<b>Low End Projection</b>	<b>Less than 1% Annual Growth</b>	<b>1.5 Percent</b>	<b>+2,886</b>	<b>+2,886</b>
<b>High End Projection</b>		<b>2.5 Percent</b>	<b>+5,314</b>	<b>+5,314</b>
<b>CITY WIDE Pop Growth Target for 2035 (per King Co. CPPs)</b>			<b>+13,920</b>	<b>+13,290</b>

# Build-Out Projections

	<b>Current Levels in Subarea</b>	<b>Alternative 1— No Action</b>	<b>Alternative 2— Connecting Corridors</b>	<b>Alternative 3— Compact Community</b>
<b>Population</b>	<b>8,321</b>	<b>Timeframe Unknown; Not Likely to Reach Full Zoning Capacity</b>	<b>34,643</b>	<b>36,647</b>
<b>Households</b>	<b>3,467</b>		<b>14,435</b>	<b>15,270</b>
<b>Employment/ Jobs</b>	<b>1,595</b>		<b>11,747</b>	<b>9,639</b>
<b>Estimated Build-out Horizon</b>			<b>60 to 94 Years By 2075 to 2109</b>	<b>63 to 98 Years By 2078 to 2113</b>

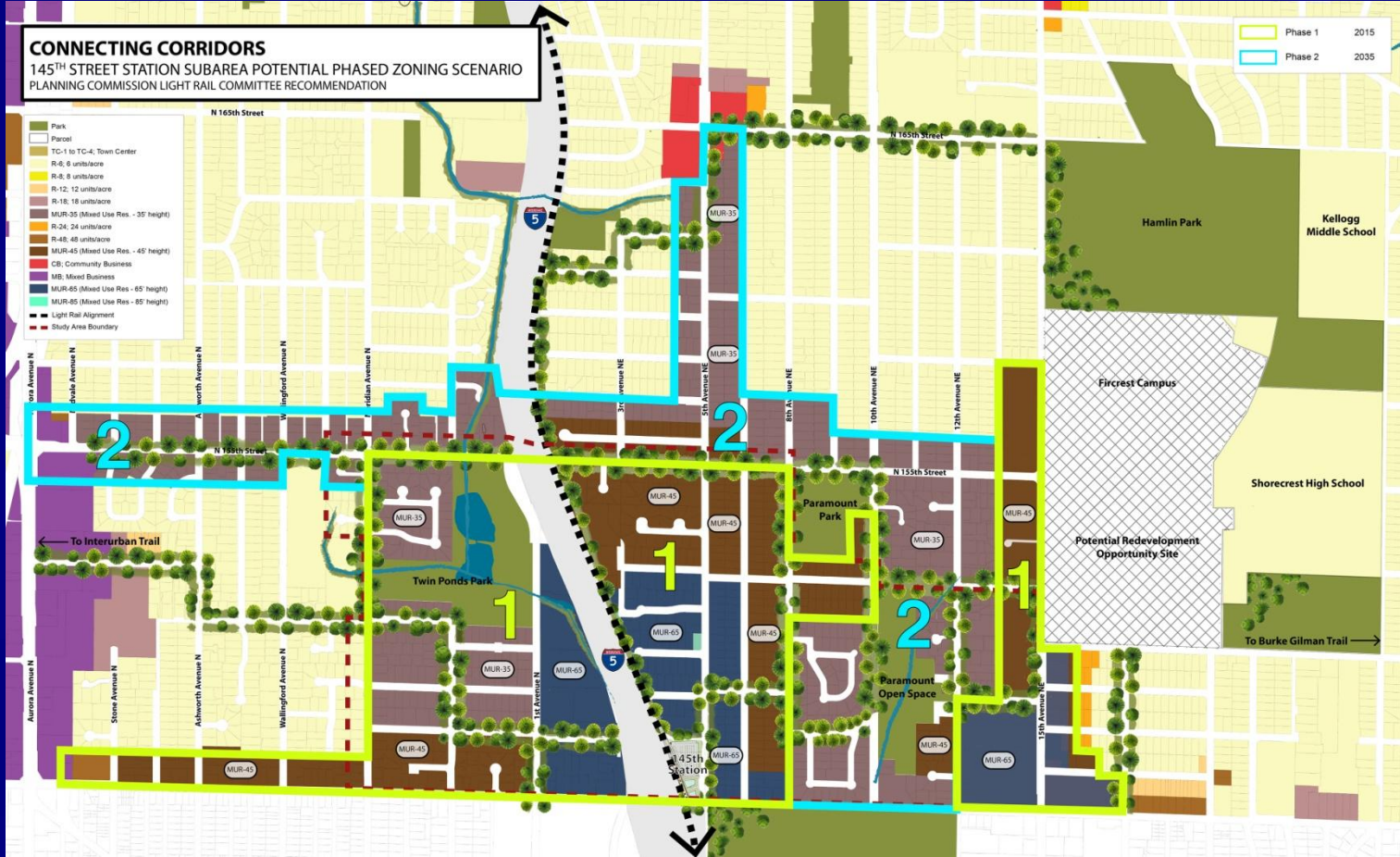
# Transportation Analysis

Alternative:	Total PM Peak Trips Generated	Daily Transportation-Related GHG Emissions (metric tons)
Alternative 1 - No Action	6,261	164
Alternative 2 - Connecting Corridors	20,700	240
Alternative 3 - Compact Community	17,894	213

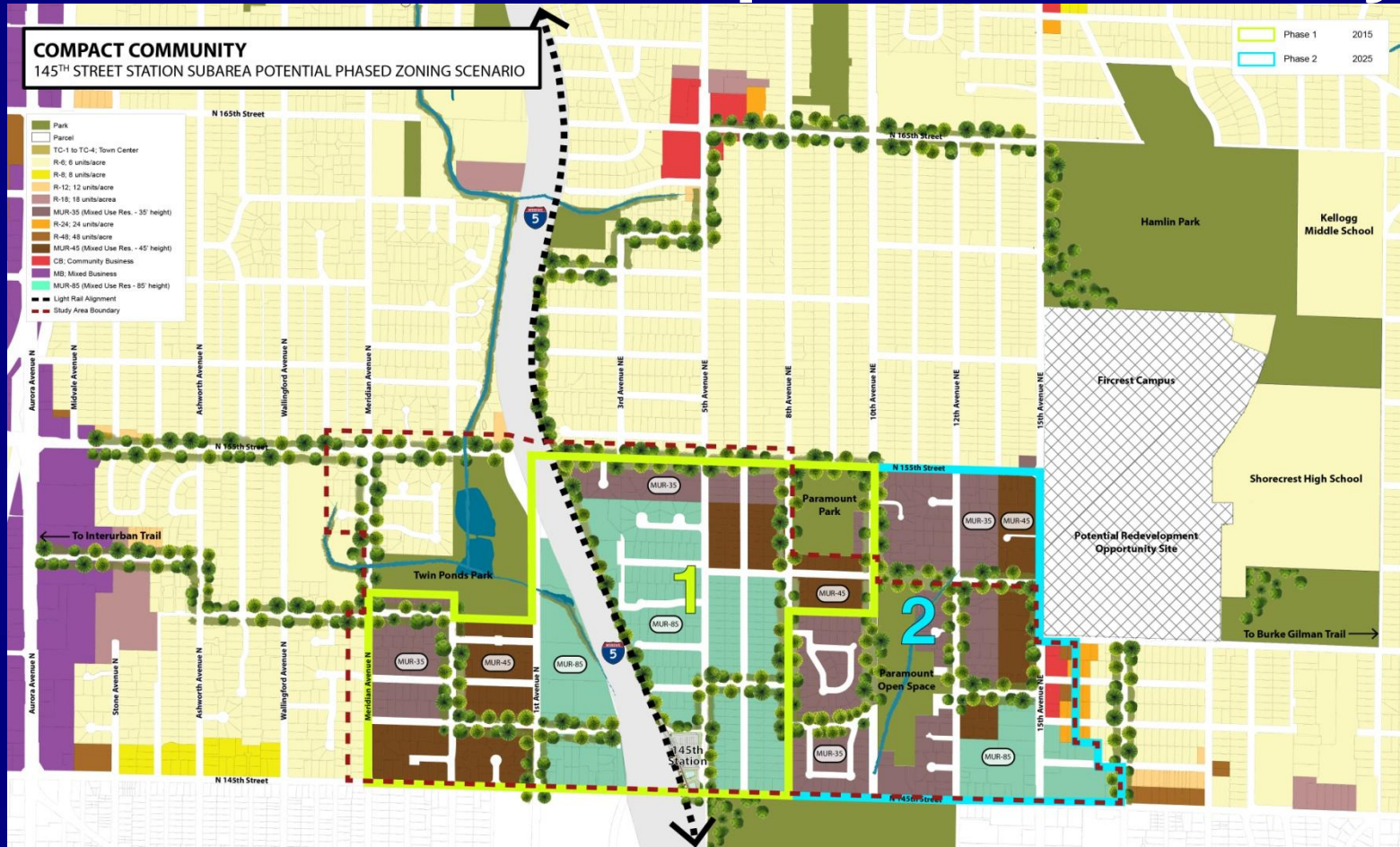




# PC Subcommittee Phased Connecting Corridors



# Staff Phased Compact Community



# Key Decisions

- Does the Commission prefer the Compact Community or Connecting Corridor zoning scenario, or a phased version of either?
- Are there other amendments to the full or phased zoning maps presented?
- Are there other questions or amendments to the DEIS?
- Does the Commission feel comfortable making a recommendation to Council tonight or wish to extend the Commission's deliberations to March 5?





# Next Steps

- March 23: City Council Selects Preferred Alternative
- FEIS is Prepared/Published



# How to Get a Copy of the DEIS

- Available for download at: [www.shorelinewa.gov/145DEIS](http://www.shorelinewa.gov/145DEIS) or [www.shorelinewa.gov/lightrail](http://www.shorelinewa.gov/lightrail)
- Copies may be reviewed at Shoreline libraries or City Hall
- Copies may be purchased at City Hall for cost of production (estimated at \$50.00 each) or compact disks can be purchased for less cost.

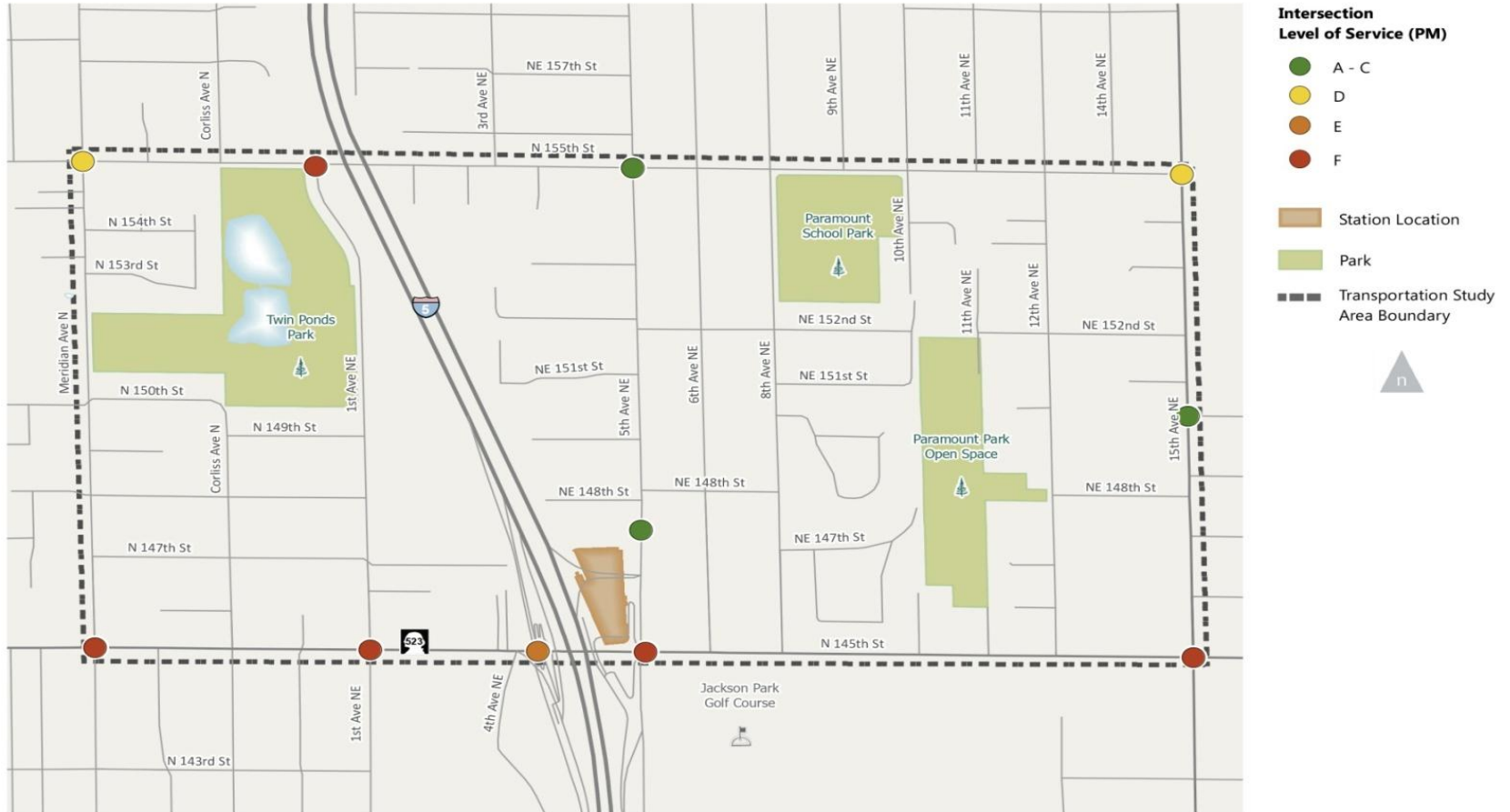


**END**

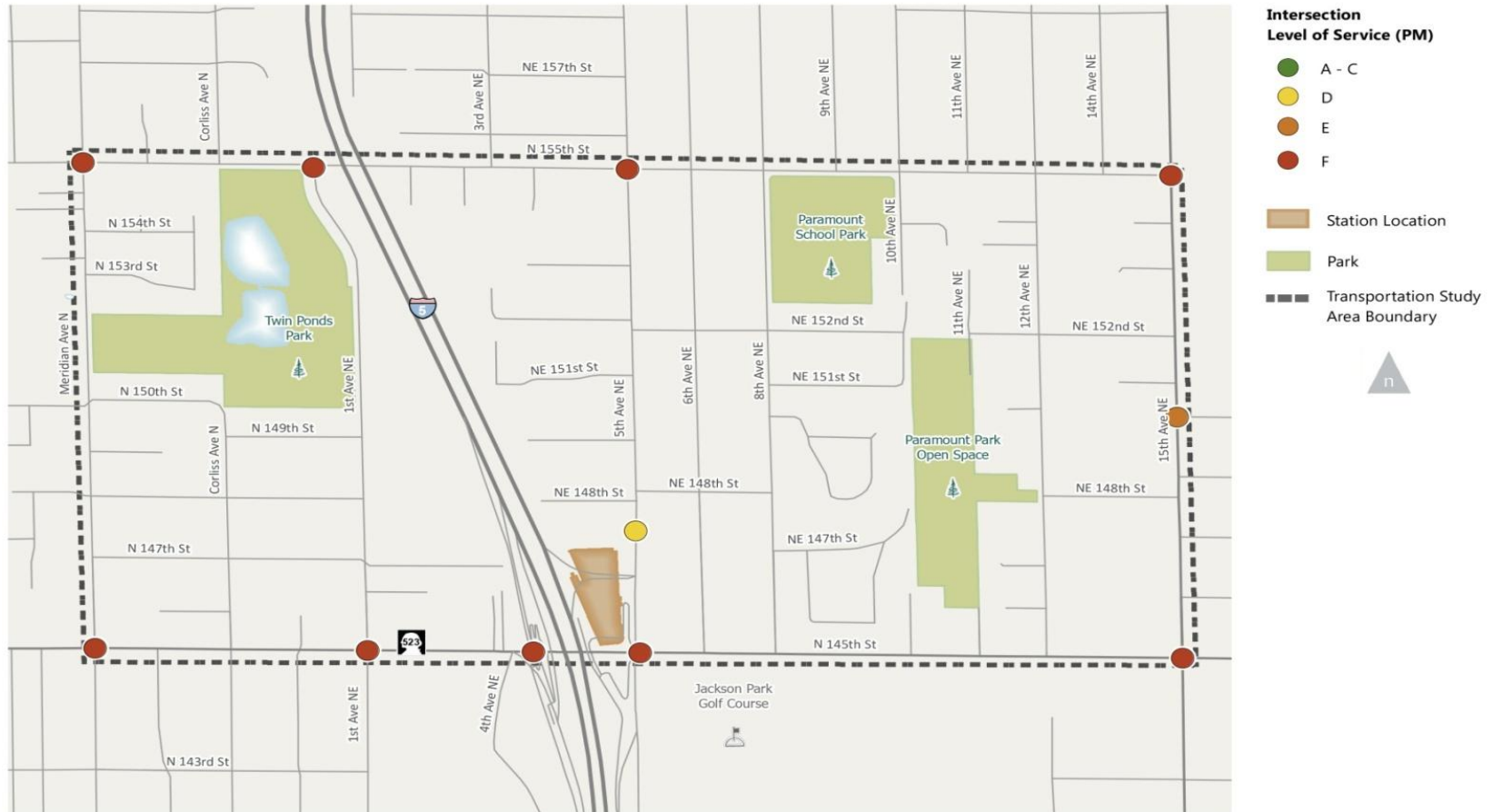




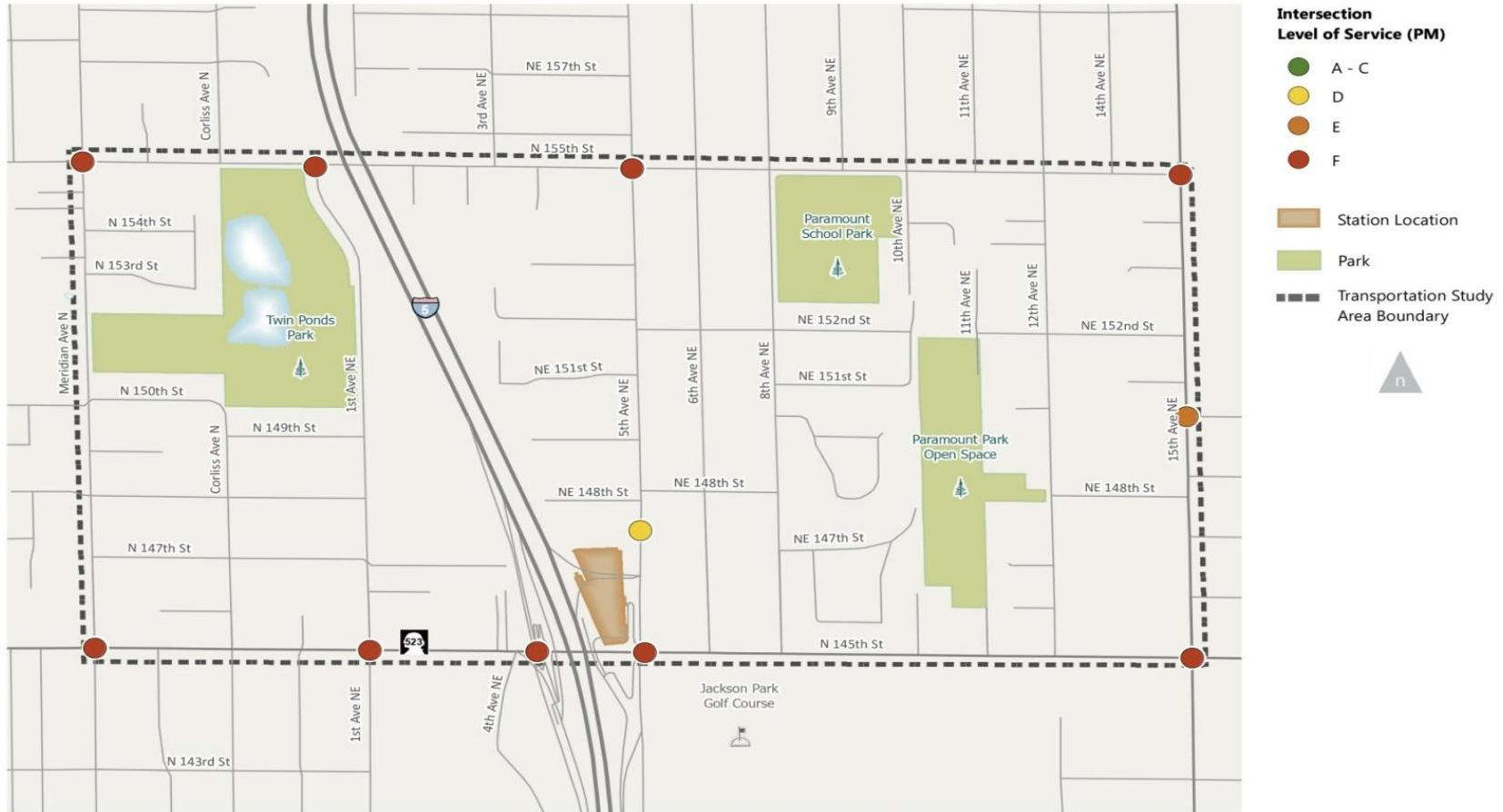
# Intersections—First Twenty Years



# Intersections—Alternative 2 Build-Out



# Intersections—Alternative 3 Build-Out

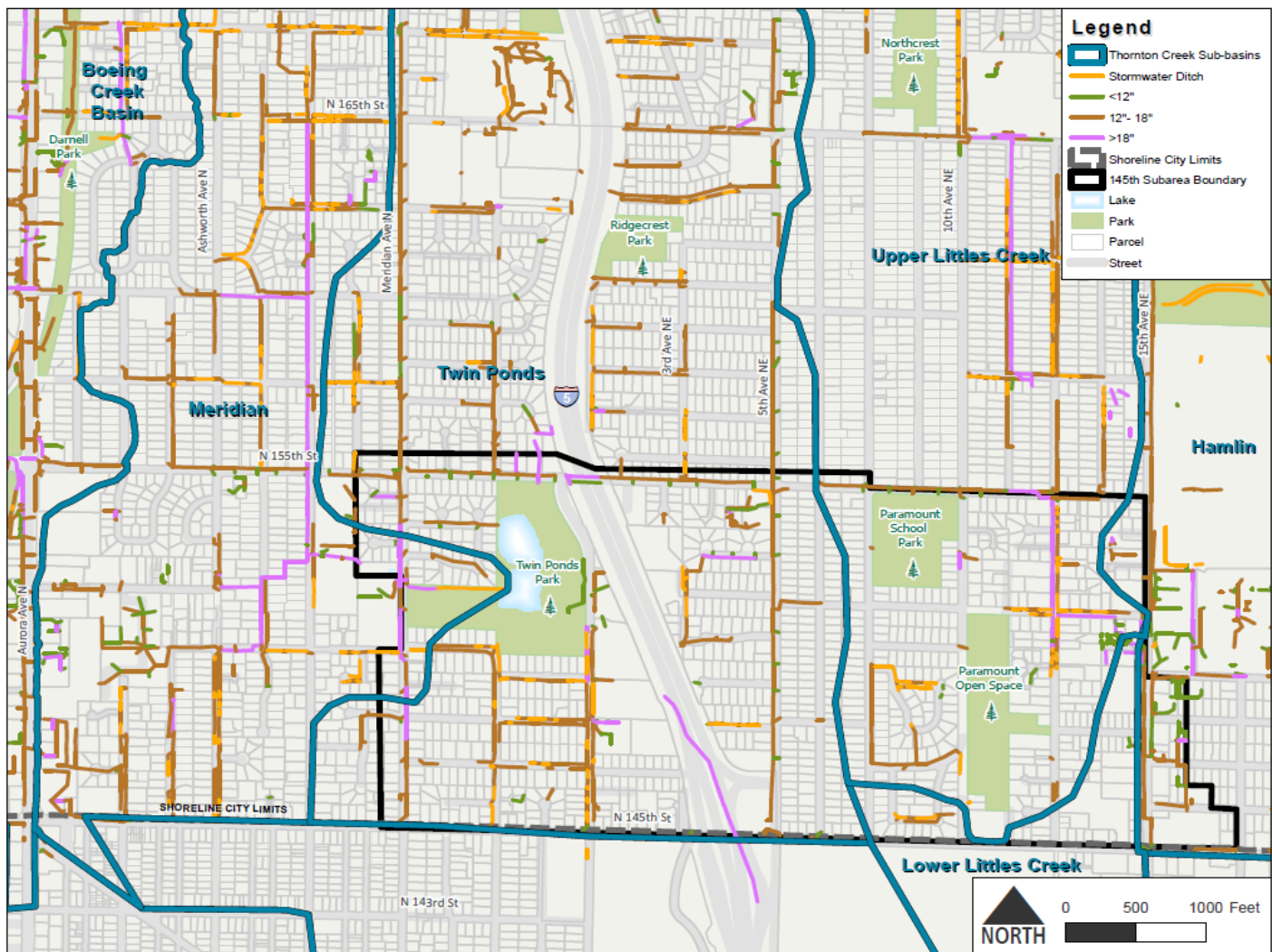




**Table 3.4-4—Unmitigated Increase in Stormwater Flow, All Alternatives**

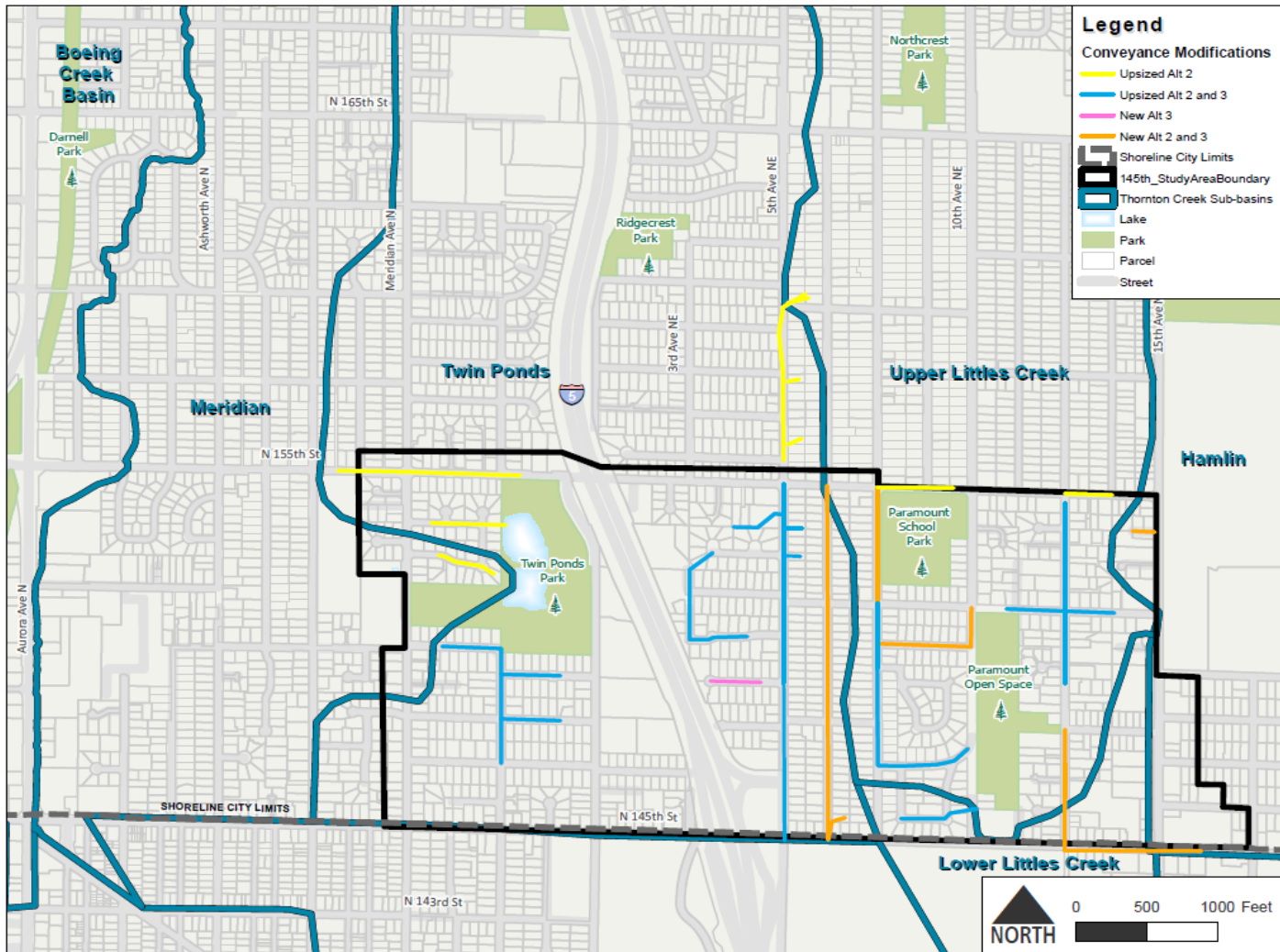
\* Percent increase in conveyance sizing for unmitigated stormwater flows with zoning revisions.

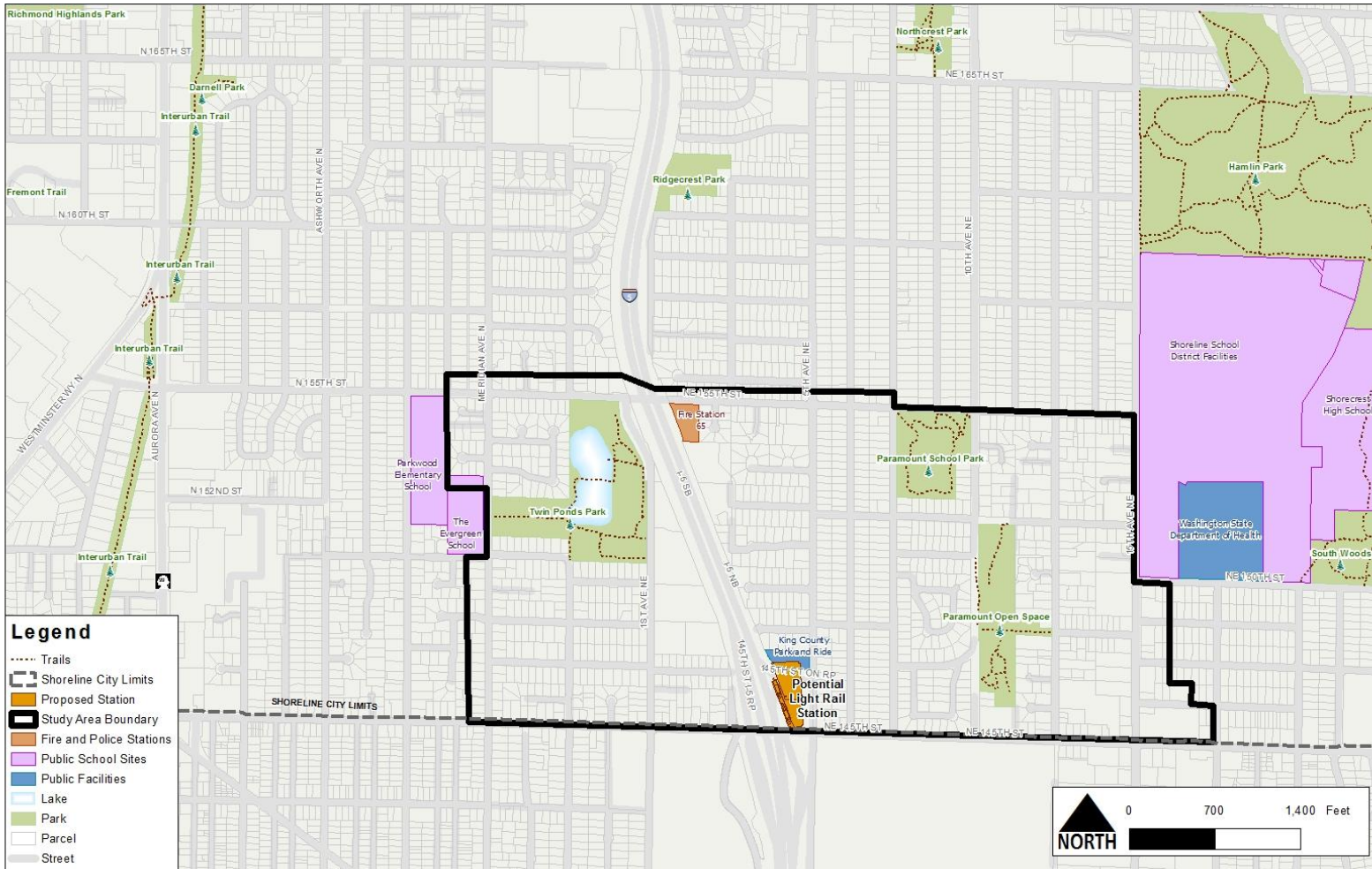
	<b>ALTERNATIVE 1— NO ACTION</b>	<b>ALTERNATIVE 2— CONNECTION CORRIDORS</b>	<b>ALTERNATIVE 3— COMPACT COMMUNITY</b>
		<b>% Increase from Existing*</b>	<b>% Increase from Existing*</b>
<b>Meridian Sub-Basin</b>	<b>Base Condition</b>	<b>6%</b>	<b>1%</b>
<b>Twin Ponds Sub-Basin</b>	<b>Base Condition</b>	<b>16%</b>	<b>11%</b>
<b>Littles Creek Sub-Basin</b>	<b>Base Condition</b>	<b>14%</b>	<b>11%</b>
<b>Hamlin Sub-Basin</b>	<b>Base Condition</b>	<b>2%</b>	<b>2%</b>



- Legend**
- Thornton Creek Sub-basins
  - Stormwater Ditch
  - <12"
  - 12" - 18"
  - >18"
  - Shoreline City Limits
  - 145th Subarea Boundary
  - Lake
  - Park
  - Parcel
  - Street









## Critical Areas Info

### Legend

 Wetland

### Stream

#### RegulatoryType

Open Water Course


Piped Water Course

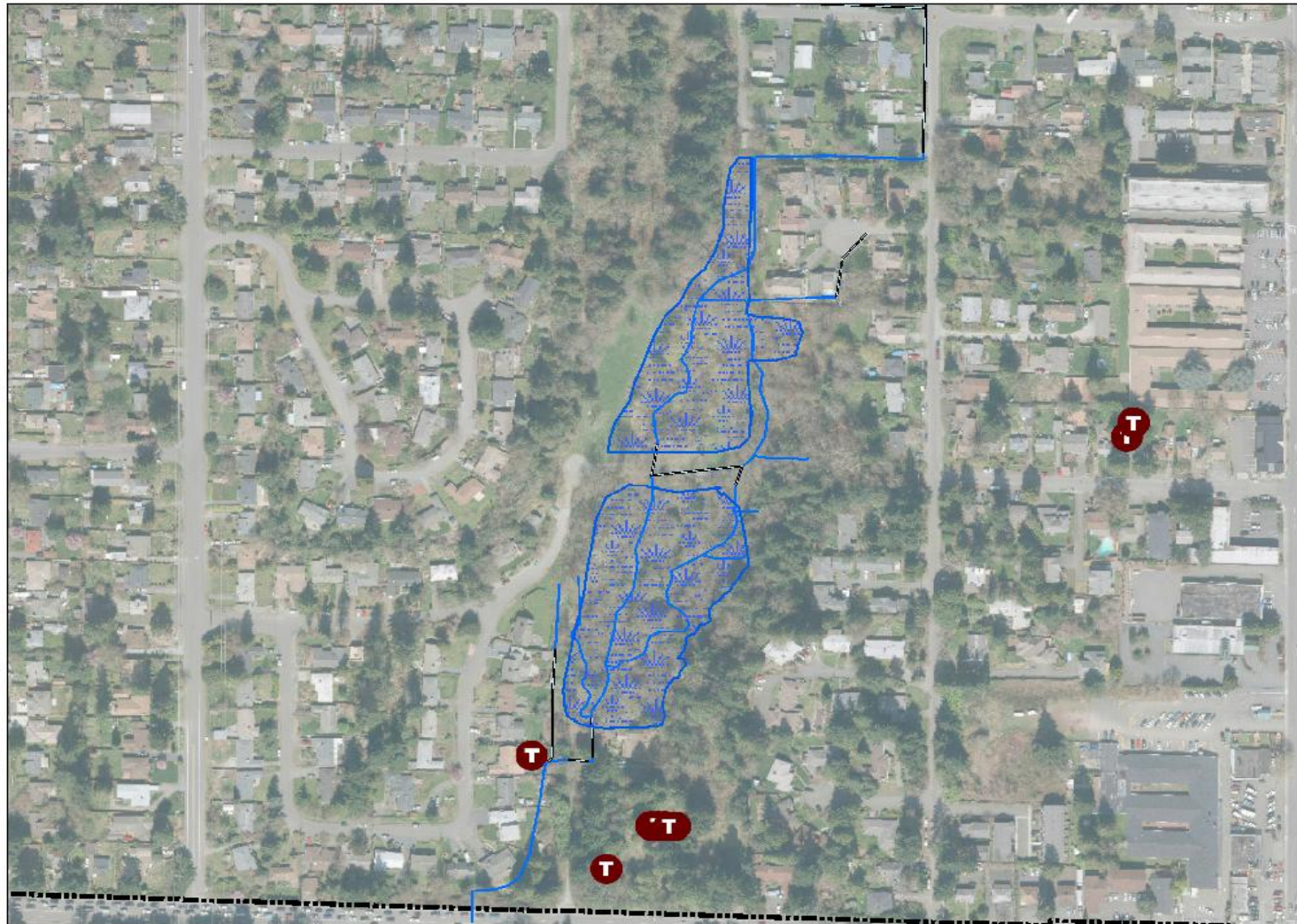
Drainage Only

Flowline

Unclassified

Undocumented

 Technical Report



1 inch = 157 feet

0 40 80 160 240 320 Feet

No warranties of any sort,  
including accuracy,  
fitness, or merchantability,  
accompany this product.

