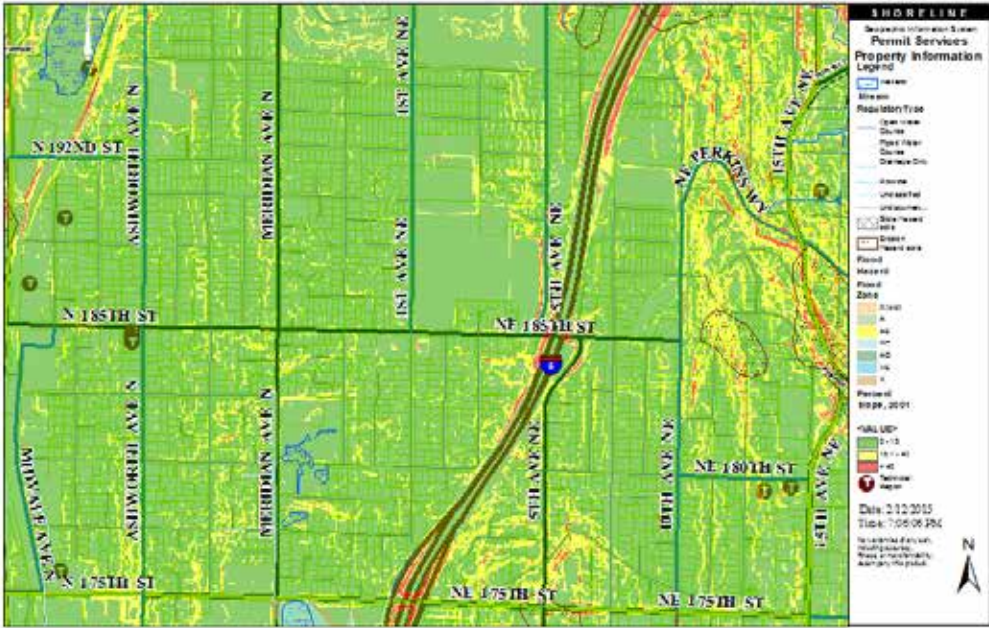


Critical Area Map



Soils Map

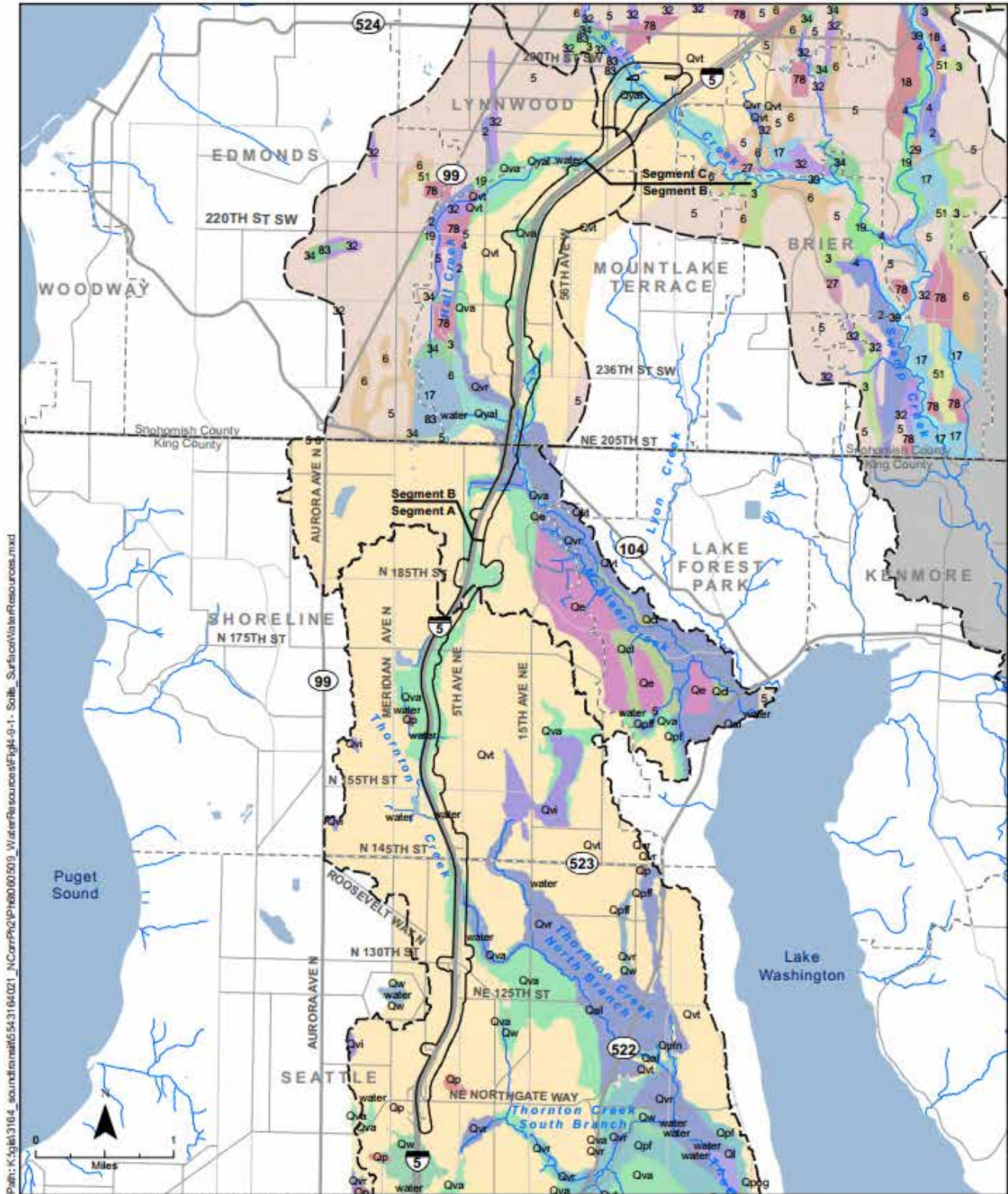


Figure I-4.9-1
Study Area Soils

- Project Area
- City Boundary
- County Boundary
- Study Area Stream Basin
- Stream
- Waterbody

Note: See Table I-4.9-1.
for soil code descriptions.

Soils Description

Lynnwood Link Extension | Draft Environmental Impact Statement

Geologic Unit (Map Symbol)	Description	General Constructability	Density and/or Hardness	Strength	Permeability	Liquefaction Potential
Vashon glacial till (Qvt)	Non-sorted mixture of clay, silt, sand, gravel, cobbles, and boulders deposited along the base of the Vashon glacial ice. The upper 2 to 5 feet is often weathered. These materials are generally heterogeneous, yet often exhibit considerable variation in composition over short distances	Excellent foundation support and stable cuts when undisturbed; perched groundwater sometimes encountered; wet-weather sensitive, soils suitable for reuse as engineered fill depending on moisture content	Medium dense to very dense	High	Low	Low
Advance outwash (Qva)	Stratified sand with gravel and some cobbles deposited by streams emanating from advancing glaciers and subsequently glacially consolidated. Advance outwash deposits typically contain relatively low fines content. However, locally, the advance outwash can be silty and contain layers of fine-grained sands and silts.	Excellent foundation support and stable cuts when undisturbed, unless below the water table or exposed to water; potentially high groundwater occurrence; soils suitable for reuse as engineered fill	Dense to very dense	High	Medium to high	Low