

**From:** [Debbie Tarry](#)  
**To:** [Will Hall](#)  
**Cc:** [Carolyn Wurdeman](#); [Heidi Costello](#); [John Norris](#)  
**Subject:** Human Service Funding  
**Date:** Monday, August 25, 2014 2:38:08 PM  
**Attachments:** [CDBG History Council.xlsx](#)

---

Will –

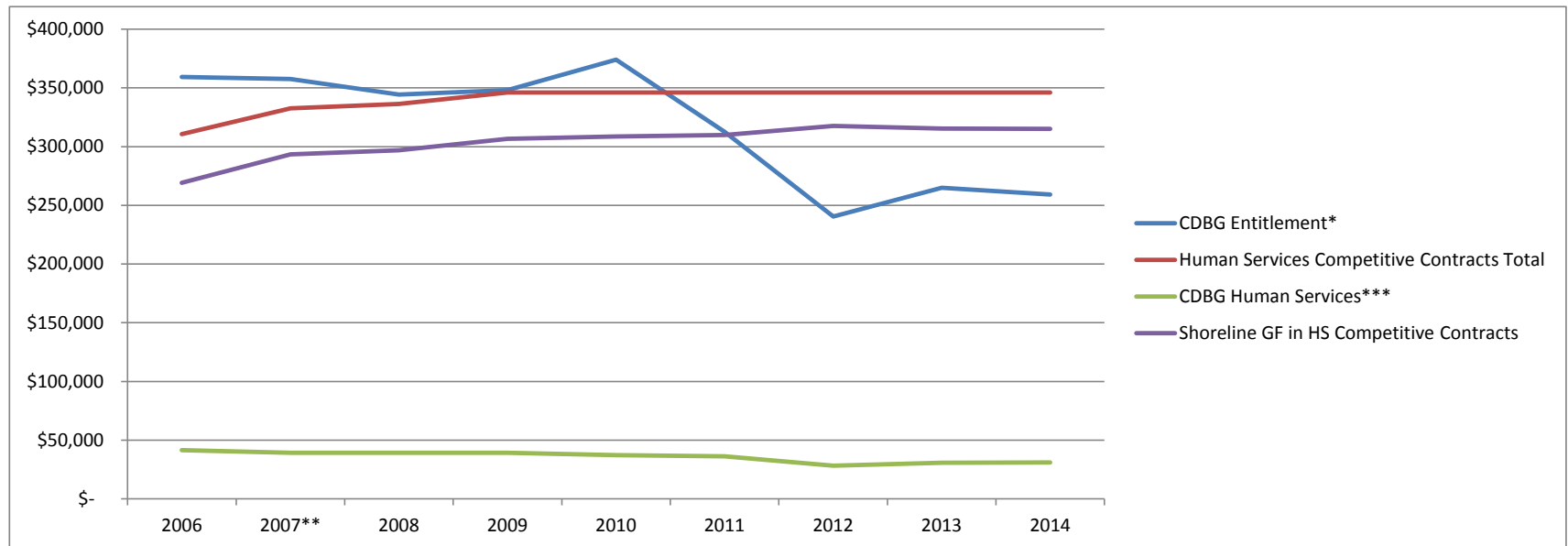
Attached you will find a spreadsheet in response this question that you sent last week. We will include in tonight's green folder.

Question:

Can we get a chart showing the revenue allocations for human services over the past ten years? I am interested in seeing if there is any trend in the CDBG funds and the local funds. Thanks.

Debbie Tarry  
City Manager  
City of Shoreline  
17500 Midvale Ave N.  
Shoreline, WA 98133

	2006	2007**	2008	2009	2010	2011	2012	2013	2014
CDBG Entitlement*	\$ 359,302	\$ 357,484	\$ 344,206	\$ 348,019	\$ 373,943	\$ 312,578	\$ 240,357	\$ 264,995	\$ 259,298
CDBG Human Services***	\$ 41,407	\$ 39,268	\$ 39,268	\$ 39,268	\$ 37,394	\$ 36,215	\$ 28,335	\$ 30,705	\$ 30,956
Shoreline GF in HS Competitive Contracts	\$ 269,133	\$ 293,282	\$ 296,951	\$ 306,713	\$ 308,587	\$ 309,766	\$ 317,646	\$ 315,276	\$ 315,025
<b>Human Services Competitive Contracts Total</b>	<b>\$ 310,540</b>	<b>\$ 332,550</b>	<b>\$ 336,219</b>	<b>\$ 345,981</b>	<b>\$ 345,981</b>	<b>\$ 345,981</b>	<b>\$ 345,981</b>	<b>\$ 345,981</b>	<b>\$ 345,981</b>



\* Includes all elements of CDBG funding: Direct Services, Capital (Minor Home Repair and agency capital), Major Home Repair, Homelessness Project and Program Administration, HS Competitive Contracts

\*\*added \$18k senior center additional funding in 2007

\*\*\*this figure is calculated as 10% of the total of the CDBG Entitlement and Program Income