

# CITY OF SHORELINE CURRENTS

December 2005 Vol. 7 No. 9

## Inside:

### Interurban Trail



Shoreline celebrated the completion of two more sections of the Interurban Trail in September.

Page  
**13**

### More Inside:

- 2006 Budget 2
- North City Update 3
- Aurora Corridor 4 & 5
- Dayton Retaining Wall 6
- Boeing Creek Park 7
- Tree Recycling Event 9
- Cottage Housing 12



## Maintaining the legacy of financial stability

As we reach the end of our 10<sup>th</sup> anniversary year, there is a lot to look back on with fond memories. Being named the “Best Place to Live” by Seattle magazine this year was the crowning touch on our celebration of a decade of success. As a community, we have a lot to be proud of.

One of the best legacies of our first decade is our financial stability; we are fortunate to be in such a good place. It is not due to luck that we are in this position. Sound financial policies that realistically looked at where money came from and decisions to spend it on the community’s highest priorities have put us on very sound financial footing.

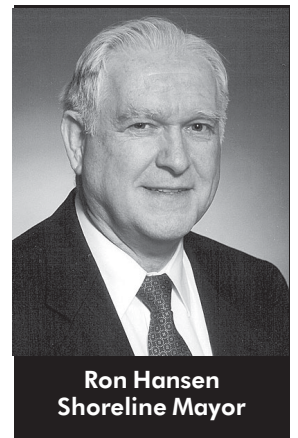
We have used only stable revenue for ongoing expenses which has allowed us to maintain and enhance services to the community. We’ve set aside one-time money for one-time expenditures. This approach has allowed us to save money that could be leveraged to match other funding we have brought back from the state and federal level to use here in our own City for much-needed improvements.

This has also put us in the enviable position of being able to afford to build a city hall. This will allow us to take advantage of current low interest rates and get way from the financial drain that paying rent represents. Investing in City-owned property is responsible stewardship of taxpayer dollars – a practice that the City has followed since incorporation.

Another one of our policies has been to base financial decisions on long-range forecasts. This helps us avoid making decisions that may look good now but could have a negative impact in the future.

Shoreline is dedicated to providing high-quality services and one key to doing this is to attract and keep high-quality staff. An organization’s culture is a major factor in doing that. This year’s employee survey results

See **Stability** page 15



**Ron Hansen**  
Shoreline Mayor

## City Council adopts 2006 budget

The City Council adopted the 2006 budget on Nov. 28. The 2006 budget totals \$79.4 million, a 13% reduction from the 2005 budget. This is primarily due to the 2006 capital budget being about \$12 million less than the 2005 capital budget. The operating budget is \$36.9 million with the remaining \$42.5 million in the capital budget.

The Council also adopted the 2006 property tax levy rate which is projected to be \$1.18 per \$1,000 of property value. This is a 5.6% decrease from the 2005 property tax levy rate of \$1.24.

Major changes in the 2006 budget from 2005 include:

- Enhanced economic development program with an assistance program for small businesses.
- Increased on-going annual funding for human services by \$83,000 bringing total on-going funding to nearly \$400,000 for human service agencies.
- Development of a human services/youth services master plan.
- Increased funding for City street lights. Some residents pay for their own street lights and the City pays for some. This funding will allow the City to assume the cost of most public street lights.
- Increased funding for sidewalks around schools from \$670,000 to \$900,000.
- Allocation of \$200,000 in one-time money to provide traffic calming devices in neighborhoods.
- Adding an additional police officer for traffic enforcement, addressing one of the highest priority services of the Shoreline community.

- Providing funding to update the City's emergency response plan as required by the federal government.

- Reduced funding for City gateway improvements by \$75,000 -- from \$100,000 down to \$25,000.

- Improve park aesthetics by hiring an additional park maintenance worker.

- Hire a parks project coordinator to help design park improvements and coordinate projects with outside groups such as Shoreline Community College and Boy Scouts among others.

- Implement a joint electrical permit program with the State Department of Labor & Industries that will allow people to obtain electrical permits through the City instead of having to drive to Bellevue to get the permit.

- \$9 increase in annual surface water utility rate for single family residences (from \$102 to \$111) with a similar increase for other types of properties (such as commercial properties). This is based on the rate structure in the surface water master plan adopted by the City Council earlier this year. The money will be used for drainage improvement projects.

### Budget documents are available for review at:

Shoreline City Hall  
City Clerk's Office  
17544 Midvale Ave. N

Eastside Neighborhood  
Police Center  
521 NE 165th

Westside Neighborhood  
Police Center  
624 NW Richmond Beach Road

Richmond Beach Library  
19601 21st Ave. NW

Shoreline Library  
342 NE 175th

## North City Project passes half-way mark

Construction of the North City Project is more than half way complete. In the next month, crews will be completing sidewalks, underground utilities and the storm water system, and Seattle City Light, Qwest and Comcast will be installing their wiring.

The North City Project not only includes improvements to the commercial area along 15<sup>th</sup> Avenue NE between NE 172<sup>nd</sup> and NE 180<sup>th</sup> Streets, but also pedestrian safety improvements along the entire corridor. Improvements include underground utilities, new street signals, six-foot sidewalks with planting and utility zones, on-street parking, new storm drainage, street overlays and a gateway into the North City area.

In March 2005, the Shoreline City Council awarded a construction contract to SCI



**A few of the familiar faces at the North City construction site, from left: Steve Miller, KBA, Construction Inspector; Mike Eastman, Project Manager for SCI Infrastructure; Russell Darby, Foreman for Service Electric; and Robert Hopkins, Superintendent for SCI Infrastructure.**



**Pouring sidewalks has been one of the major focuses of the North City Project in the past few months.**

Infrastructure, LLC, for the North City Project. KBA was selected to provide construction management services.

Here's what to expect in the coming months:

- New utility wiring installation through February.
- Signal/light pole installation through March.
- Sidewalks completed (except spot work) in January.
- Above-ground utilities removed in February/March.
- Asphalt overlay on 15<sup>th</sup> Avenue NE in April.
- Project completion in May.

Full-time traffic control is on-site to help move traffic through the construction area and to help

with pedestrian access during construction. Please continue to drive with caution through the construction zone.

The North City construction office is located at 17711 15<sup>th</sup> Ave. NE. For more information about the North City Project, visit [www.cityofshoreline.com](http://www.cityofshoreline.com), or call the North City Information Line at (206) 533-2280. Shoreline Capital Projects Manager John Vicente may also be contacted at (206) 546-8903.



## First mile of Aurora Corridor takes shape

Work on the first mile of Aurora has come a long way since breaking ground this summer. In June, the Shoreline City Council awarded a \$23.6 million construction contract to Gary Merlino Construction Company to complete the Aurora Corridor Project, N. 145<sup>th</sup> to N. 165<sup>th</sup> Streets, and the Interurban Trail Bridge Project.

Since then, crews have been hard at work making the project goal – a better, safer Aurora – a reality.

Work this year has included:

- Installation of new fire hydrants along the west side of Aurora between N. 145<sup>th</sup> and N. 155<sup>th</sup> Streets.
- Installation of a new 12-

inch water main along the west side of Aurora between N. 145<sup>th</sup> and N. 155<sup>th</sup> Streets, crossing Aurora at N. 155<sup>th</sup> Street.

- Undergrounding of electrical and communication utilities along the west side of Aurora.
- Installation of a new storm water and treatment system along the west side of Aurora and side streets.
- Relocating and upgrading of gas lines between N. 145<sup>th</sup> and N. 155<sup>th</sup> Streets.
- Demolition of the existing bridge abutment near N. 155<sup>th</sup> Street.
- Pouring footings and columns for the north portion of the N. 155<sup>th</sup> Street Bridge and the west portion of the Aurora Bridge.

The City continues to provide construction updates to business and property owners in the area. Police officers are on site to help with traffic control and safety in the construction area. Motorists are encouraged to drive carefully and observe the 35 mph temporary construction speed limit.

The Aurora Corridor Project is Shoreline's plan to redesign and upgrade the first mile of the corridor, including two through-traffic lanes in each direction, a Business Access/Transit lane in each direction for buses and motorists entering and exiting businesses, a center median with U-turn and left-turn pockets, sidewalks, landscaping and undergrounded utilities. Two bridges – one over Aurora and



**Crews built the rebar forms for one of the piers for the N. 155th St. Bridge.**

another over N. 155<sup>th</sup> Street – will provide safe crossings for Interurban Trail users. Construction is scheduled to be completed winter 2006.

The construction office for the project is located at 15526 Aurora Ave. N., (206) 306-0355, and is open to the public Monday through Friday from 7 a.m. to 3:30 p.m. For more information on the project, visit [www.shorelineaurora.com](http://www.shorelineaurora.com) or call the Aurora Info Line at (206) 546-5680 to hear a recorded construction update message. You may also call Capital Projects Manager Maggie Brown at (206) 546-1921.



**Crews work in a storm water trench near N. 160th St.**

## Aurora Corridor Project: The next two miles

With construction on the first mile under way from N. 145<sup>th</sup> to N. 165<sup>th</sup> Streets, the City has started work on the next two miles of the project from N. 165<sup>th</sup> St. to N. 205<sup>th</sup> St.

An open house earlier this year kicked off the public outreach and pre-environmental process. City staff presented information to approximately 70 Shoreline residents and business owners, including background information and the design process for the next two miles of Aurora.

A report card document showed residents how the first section of the Aurora project is meeting "The 32 Points" identified by the community and adopted by the City Council before the project began. The "32 Points" directs how the design can be flexible to minimize impacts on businesses and take into account existing conditions along Aurora while still meeting the goals of the project. The second section will also reflect those guidelines and they will continue to provide direction as the project moves forward.

Those attending the open house were encouraged to share ideas and comments, both verbal and written, on the design for the next two miles of the project from N. 165<sup>th</sup> to N. 205<sup>th</sup> St.

The most common concerns were water quality and impacts to nearby Echo Lake, impacts to surrounding businesses and what level of environmental documentation the City will pursue. The environmental

decision will be made jointly with the City's federal and state partners on the project.

As part of the City's outreach program, an Aurora Business Team (ABT) was created to advise City staff as it moves forward with the project.

The group's first meeting was Nov. 30 and five more meetings are scheduled. The ABT is comprised of large and small business and property owners from the corridor and members of Forward Shoreline, the Shoreline Chamber of Commerce and the Shoreline Merchants Association (see box at right).

The first meeting focused on the process and timeline to reach a decision on the appropriate level of environmental documentation. ABT members will also provide input to staff on a range of design and review issues including signage, elements of environmental review and project alignment.

Construction on the next two miles of the Aurora project could begin as early as 2008. The environmental work is scheduled for next year, with right-of-way acquisition scheduled for 2007.

For more information about the project, contact Capital Projects Manager Kris Overleese at (206) 546-0791.

### Aurora Business Team

The 14 volunteer Aurora Business Team appointees include:

**Art Ellis**  
Echo Cove Condominium

**Sunny Hong**  
Shoreline Motel

**William Hubbell**  
Club Hollywood Casino

**Dan Mann**  
Tropical Tan

**Andy Milliken**  
Costco Wholesale Corp.

**Linda Minarcin**  
residential property owner

**Tim Morris**  
Rainier Commercial Development

**Perry Murless**  
Firlands Way Condominium

**Greg Olson**  
Chuck Olson Chevrolet

**Mick Richards**  
Shoreline Sign & Awning

**Larry Steele**  
Aurora Rents

**Rick Stephens**  
Highland Sports Center

**Evan Voltsis**  
Elsia LLC

City staff that will be working with the ABT include Capital Projects Manager Kris Overleese, Aurora Corridor Project Manager Kirk McKinley and Assistant City Manager Julie Modrzejewski.

## New pedestrian stoplight for Aurora/180th

To improve safety for pedestrians crossing Aurora Avenue North, the City of Shoreline is installing a new pedestrian stoplight and crosswalk at N. 180th Street.

The project includes installing a crosswalk, a center refuge median for pedestrians and approximately 260 feet of sidewalks along both sides of Aurora. Once this portion of the project is complete, King County crews will install a pedestrian-activated stop light for Aurora traffic. Periodic lane closures are expected, but two travel lanes in each direction will be maintained during peak hours.

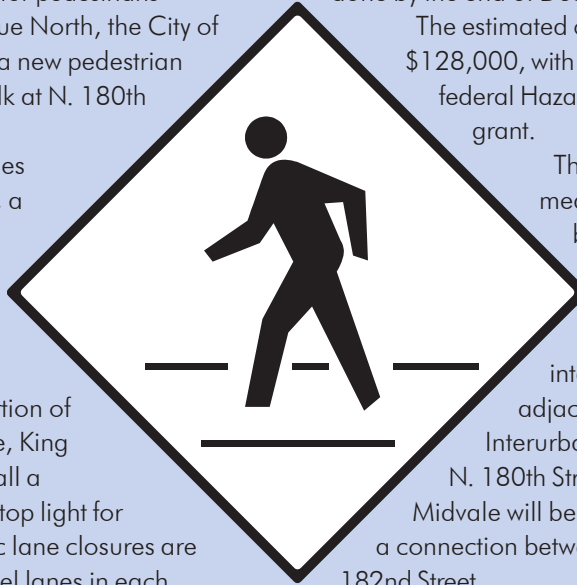
The entire project is scheduled to be

done by the end of December.

The estimated cost of the project is \$128,000, with \$90,000 paid for by a federal Hazard Elimination System grant.

The pedestrian refuge median will allow left turns by traffic traveling north on Aurora, but will not allow any other left turns in the intersection. When the adjacent portion of the Interurban Trail is built next year, N. 180th Street between Aurora and Midvale will be closed and replaced by a connection between the two streets at N. 182nd Street.

For more information about the project, contact Shoreline Capital Projects Manager John Vicente at (206) 546-8903.



## Deteriorating retaining wall to be replaced Dayton will also get pedestrian safety improvements with project

Shoreline is working on a project that will not only replace a deteriorating retaining wall along Dayton Avenue N., but will improve safety at a nearby intersection.

The retaining wall that supports the roadway and walkway on the west side of Dayton Avenue N. just south of St. Luke Place is deteriorating and needs to be replaced. Children walk to and from school on

Dayton Avenue alongside traffic. When the City replaces the retaining wall it will also make changes to improve safety to the Dayton/St. Luke intersection.

The project includes replacing the existing wall, constructing new sidewalks from N. 172nd Street to St. Luke Place N. and reconfiguring the intersection of Dayton Avenue N. and St. Luke Place N. to shorten the crossing and remove the soft right turn. By combining the safety improvements with the retaining

wall replacement, the City will be able to save money on project costs.

A Dec. 1 open house provided information about the project and those attending shared concerns and suggestions with staff. The project is currently in the design phase and is scheduled to begin construction in June 2006 after school is out for the summer.

For more information, call Shoreline Capital Projects Manager John Vicente at (206) 546-8903.



## Three projects planned for Boeing Creek Park

This fall, the City of Shoreline and King County hosted a site tour at Boeing Creek Park to share information about the City's park improvement and stormwater projects and the County's wastewater projects.

Boeing Creek Park is adjacent to Shoreview Park and is located near the intersection of 6th Avenue NW and NW 175th Street.

The October tour gave the two agencies a chance to discuss the projects and construction schedule with Shoreline residents and respond to questions and concerns. It also provided an opportunity to gather feedback about neighborhood needs and the City's proposed park design.

To reduce construction impacts and costs to taxpayers, the City and County are coordinating three projects in Boeing Creek Park: 1) stormwater facility improvements that are the second phase of Shoreline's Third Ave. NW Drainage Improvement Project; 2) improvements to the park now under design by the City; and 3) installation of an underground wastewater storage pipe that is part of King County's Hidden Lake Sewer Improvement Project.

The county has reached 95 percent design and plans to begin construction in spring 2006. Displays at the event described the need for the projects, what to expect during construction and ways the County is minimizing impacts. The City also presented project information and proposed concepts for the Boeing Creek Park and Drainage Improvement



**The fall site tour gave residents a chance to learn more about the projects planned by the City and County for Boeing Creek Park.**

projects. Improvements to Boeing Creek Park may include trails, pathways, handicapped access, landscaping, irrigation, bank stabilization, benches and signage.

The City plans to complete the design phase by the end of 2006, with construction scheduled for 2007-2008. The concept for park improvements originally designed as part of the Third Ave. NW Drainage Improvement Project has been updated to reflect comments from the public and will be refined over the next year based on a public participation process.

### More Information

#### City of Shoreline Projects

Capital Projects Manager

Jon Jordan

(206) 546-1678

[jjordan@ci.shoreline.wa.us](mailto:jjordan@ci.shoreline.wa.us)

[www.cityofshoreline.com/cityhall/  
project/boeingcreekpark/index.cfm](http://www.cityofshoreline.com/cityhall/project/boeingcreekpark/index.cfm)

#### King County Hidden Lake Sewer Improvement Project

Jennifer Kauffman

(206) 263-6029

[jennifer.kauffman@metrokc.gov](mailto:jennifer.kauffman@metrokc.gov)

[http://dnr.metrokc.gov/wtd/  
projects/hiddenlake.htm](http://dnr.metrokc.gov/wtd/projects/hiddenlake.htm)

## New Code Enforcement regulations in effect

In response to community feedback, the Shoreline City Council made improvements to the Code Enforcement Program a priority in its 2004-2005 Work Plan. At its Sept. 12 meeting, Council followed through by adopting new and enhanced regulations to the City's Code Enforcement Program.

The adopted changes were based on community input at a public workshop and include Shoreline's first Property Maintenance Code establishing minimum standards for the upkeep of buildings and property.

The following new and enhanced regulations went into effect Sept. 20, 2005:

### Right-of-way

Abandoned and junk vehicles may not be parked on right-of-way, whether paved or unpaved. (See the story on the next page for more information about reporting abandoned vehicles.) The definition of junk vehicle and unauthorized vehicle was tightened by:

- Adding language that requires vehicles to display current registration tabs.
- Prohibiting vehicles from being used for human habitation (sleeping and/or living in vehicles).
- Prohibiting re-parking a vehicle within the same block to avoid the 24-hour limit of parking on the right-of-way.

### Garbage on residential property

Residential garbage must be removed at least every two weeks; previously no removal was required if garbage was in a container.

### Parking for single family houses and duplexes

Parking or storage of vehicles outside a building or carport shall not exceed six, excluding a maximum of any two boats, recreational vehicles or trailers. Inoperable vehicles are prohibited outside.

### New Property Maintenance Code

The code applies to all existing residential and non-residential structures.

#### Exterior property standards include:

- Yards maintained in a clean, safe and sanitary condition.
- All premises graded and maintained to prevent soil erosion.
- All structures and exterior property kept free from rodent infestation.
- Inoperative or unlicensed motor vehicles, recreation vehicles and boats are prohibited.

#### Exterior structures standards include:

- All exterior surfaces

maintained in good condition i.e., siding in good repair, roof in good condition, chimneys and other masonry safely maintained and graffiti prohibited.

- No cracks or breaks in foundation and exterior walls.
- Roofs and drains maintained to keep water out of structures.
- Windows, skylights and doors kept weather tight and in good working condition.

If a complaint was previously filed on a property that is now in violation due to the new Code regulations, the property owner will be issued a warning and the process will begin anew.

## More Information

For more information about the City's Code Enforcement Program, the new regulations or to report a possible code violation, contact:

**Shoreline's  
Customer Response  
Team  
(206) 546-1700**

**Shoreline Code  
Enforcement Officer  
Kristie Anderson  
(206) 546-0783**



## Reporting abandoned vehicles in Shoreline

Reporting abandoned vehicles in Shoreline is now easier than ever.

Previously, residents had to call King County, but now the City of Shoreline's Customer Response Team (CRT) can respond to abandoned vehicle reports.

Over the past few years, there has been an increase in the number of vehicles abandoned along the public right-of-way in



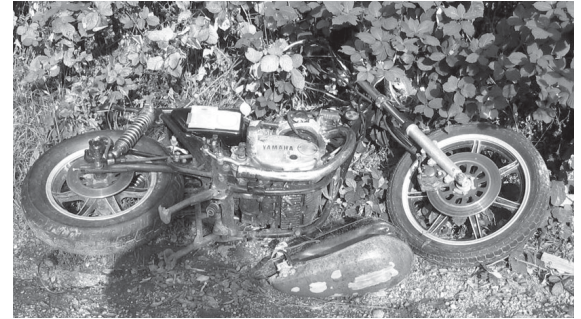
the City of Shoreline. The City codes prohibit using the public right-of-way to store, dump or sell personal vehicles.

A few of the signs that a vehicle may be abandoned include:

- Not being moved for more than three days;
- Missing essential parts needed to operate the vehicle, such as tires, engine, windows and license plates;
- Out of date registration.

Once a vehicle is reported, CRT investigates and tags it with a sticker notifying the owner that it must be moved within 24 hours.

If the follow-up check shows



that the vehicle hasn't been moved, CRT schedules it to be towed.

If you are not sure if it is an abandoned vehicle, CRT will investigate your concern and make a determination.

To report an abandoned vehicle, call Shoreline's CRT at (206) 546-1700.

## City Christmas Tree Recycling Event Jan. 7 & 8

Shoreline residents have several options for Christmas Tree disposal over the holidays, including recycling the trees as wood chips. The City of Shoreline is hosting a Christmas Tree Recycling Event on Saturday and Sunday, Jan. 7 and 8, at Hamlin Park, 16006 15th Ave. NE, from 9 a.m. to 3 p.m.

This is the only Christmas tree recycling event in the City. Youth groups offering tree pickup service as a fundraiser often bring the trees to the Shoreline event. Trees will be chipped on-site, and the wood chips offered to residents who bring a container.

Remaining chips will be taken to Cedar Grove Compost Facility.

Please bring proof of residency: this free event is open

to Shoreline residents only. Remove all hooks, ornaments and tree stands before bringing your tree to be recycled. No wreaths, swags or artificial trees will be accepted

If the event is cancelled or you cannot make it to the event, other options for disposal of holiday trees include:

- If you subscribe to curbside yard waste recycling, cut your tree into manageable pieces that fit into the container to have it hauled off.
- Take your tree to the First Ave. NE Transfer Station where you may pay to dispose of it as garbage.

For more information about

the Christmas Tree Recycling Event, call (206) 546-1700. For more information about recycling and environmental stewardship opportunities in Shoreline, visit the City's Web site at <http://www.cityofshoreline.com/cityhall/projects/water/>.

\* If there is snow or ice on the road that weekend, call (206) 546-0614 on the day of the event to find out if it is cancelled.

## Cottage housing public hearing set

Since cottage housing was adopted as part of the Shoreline Development Code by the City Council in 2000, several cottage housing developments have been built in Shoreline. As a result of community comments, questions and concerns, the City Council placed a moratorium on cottage housing in August 2004 and extended it twice to allow time for the City to gather more public comment and to study the issue further.

The Shoreline City Council held a Cottage Housing Community Discussion on Nov. 29 as an informal exchange of ideas, questions and suggestions among community members, the City Council and the Shoreline Planning Commission. The discussion began with a historical overview and a presentation by the Planning Commission of its recommendations about how the City should proceed.

The City Council will conduct a public hearing on cottage housing at its Jan. 23, 2006, meeting. Council meetings are held in the Mt. Rainier Room of the Shoreline Conference Center, 18560 First Ave. NE.

Copies of the Planning Commission recommendations are available in the Shoreline Planning and Development Services Department at the City Hall Annex, 1110 N. 175<sup>th</sup> St. or online at [www.cityofshoreline.com](http://www.cityofshoreline.com). For more information about Cottage Housing, contact Shoreline Planner Paul Cohen at (206) 546-6815.



## Ivy Out!

In November, volunteers helped clear invasive plants such as ivy out of North City and Northcrest Parks as part of the City's new Ivy Out Program. More Ivy Out events will be scheduled for other City parks in spring 2006.

## Turn on your headlights!

In this dark, foggy and stormy time of year, be sure to turn on your headlights in murky weather and as twilight approaches. Even if you don't think you need them to see, others need them to be able to see you! It could prevent an accident (and save you a fine.)

We want you to be safe out there.

## Help prevent flooding by clearing storm grates

The combination of fallen leaves and winter rains often clog catch basin grates around the City.

Leaves wash into the streets and onto the grates, blocking water flow into the storm drainage system. Often the result is flooding on City streets and private property.

You can help minimize flooding this winter by following these steps to keep storm drain grates clear:

1. Inspect and clear the catch basin grates near your property on a regular basis.
2. Rake leaves from curb and shoulder areas. This is especially important before rainstorms.

Although City staff routinely inspects known problems areas, there are thousands of catch basins throughout the City. Your help in keeping them clear goes a long way toward preventing flooding.

To report flooding problems, call Shoreline's Customer Response Team (CRT) at (206) 546-1700.



Richmond Beach Saltwater Park, located off 20th Avenue NW and NW 190th Street, has Shoreline's only public saltwater beach.

## Richmond Beach Saltwater Park Master Plan under way

The City of Shoreline is doing its part to make sure one of its most beautiful and popular parks stays that way.

The City is developing a Master Plan for Richmond Beach Saltwater Park to guide its growth and development and to protect it for future generations. The 40-acre park features breathtaking views of the Puget Sound and Olympic Mountains and the City's only public saltwater beach.

The Master Plan will guide how the City upgrades park facilities and will also include a vegetation plan to help control erosion problems and restore the park to a more natural state.

The design team, Hewitt Architects, is compiling background information and an evaluation of erosion and slope stability problems and potential solutions is complete. This information will be used during the design and public

participation process that is expected to begin early next year with community workshops. Stay tuned for upcoming announcements about the workshop schedule.

The design team is also conducting in-depth telephone interviews with key stakeholders to hear their views about current Saltwater Park uses, opportunities for new programs and to learn more about potential site issues or concerns.

Preliminary Master Plan recommendations are scheduled to be presented to the City Council in mid-2006.

For more information about the Richmond Beach Saltwater Park Master Plan, contact Capital Projects Manager Dave Buchan at (206) 546-2005.



## December is "Winter Preparedness Month"

Winter storms can range from strong winds and moderate snow over a few hours to blizzard conditions with blinding, wind-driven snow or freezing rain that lasts several days. A winter storm **watch** indicates severe weather may affect your area, while a winter storm **warning** indicates severe weather is in your area or is expected immediately.

Extreme cold and heavy snowfall can immobilize an entire region. The impacts include flooding, storm surge, closed highways, blocked roads and downed power lines.

### Before the storm strikes:

- Turn on your NOAA Weather Radio or TV to listen for the latest updates and information.
- Keep an emergency supplies kit in your house and your car.
- Do not over-exert yourself if

shoveling snow, and watch for signs of frostbite and hypothermia.

- Store water (in plastic jugs) and canned or non-perishable food that does not require cooking.
- Make sure you have a flashlight and a battery-powered radio with extra batteries.
- Learn first aid and CPR. Have a first aid kit, first aid manual and needed medicines for family members.
- Have cold weather clothing, blankets or sleeping bags available, and plastic sheets to repair your home or to improvise shelter.
- Keep a covered container for a toilet and extra toilet tissue.
- Have and maintain a fire extinguisher and know how to use it.
- Learn how to turn off the gas, power and water in your home.

### During an emergency or disaster:

- Keep calm, take time to think, give assistance where needed.
- Use the telephone only for emergency calls.

## More Information

For more tips on how you can prepare you and your family for an emergency, visit these Web sites:

[www.redcross.org](http://www.redcross.org)

[www.fema.gov](http://www.fema.gov)

[www.3days3ways.com](http://www.3days3ways.com)

[www.cityofshoreline.com](http://www.cityofshoreline.com)

## Crime Stopper Tips

From Shoreline Police Chief Tony Burt

### Guard against auto theft by following these tips:

- Don't leave your car unattended while warming it up
- Turn the motor off and take your keys with you while running short errands
- Keep doors locked
- Activate security systems
- Know your neighbors and help watch out for each other
- Call 911 if you see suspicious activity



## Shoreline Center fields scheduled for resurfacing next year

By summer 2006, soccer teams will have something new underfoot at Shoreline Center playing fields. In response to requests from the community, fields A and B at Shoreline Center will be resurfaced with state-of-the-art artificial playing surface.

The Shoreline Center fields receive heavy use by soccer teams and others in the community. The existing sand surface is muddy in the winter and dusty in the summer. And, despite the best efforts of parks maintenance staff, the fields continue to have ongoing drainage problems, creating mud holes and puddles in the rainy season. The resurfacing project will allow the fields to be used nonstop with no down time. Currently, the fields are sometimes unplayable due to standing water.

The firm of D.A. Hogan was selected to design the new synthetic field surfacing along with necessary drainage work. Hogan also surfaced the fields at the University of Oregon and Qwest Field in Seattle.

In early October, the design team hosted a tour of fields in the region to compare and contrast artificial surfacing products on the market. The tour group included Shoreline Park, Recreation and Cultural Services Board members, City staff and representatives of the Shoreline soccer community.

Both youth and adult soccer are the major users of these fields and consideration may be given to allowing field time for lacrosse

and ultimate Frisbee teams as well. The City plans to award the construction contract this winter with construction beginning in March. The project should be

complete by mid-July.

For more information about the resurfacing project, contact Capital Projects Manager Dave Buchan at (206) 546-2005.



From left, PRCS Board member Dwight Stevens, first Shoreline Mayor Connie King, City Manager Steve Burkett, King County Councilmember Carolyn Edmonds, Shoreline Mayor Ron Hansen, PRCS Board member Patti Hale, Councilmember Rich Gustafson and Councilmember Paul Grace.

## Interurban Trail: Step by step, it's getting done

Last fall, Shoreline celebrated the completion of two segments of the Interurban Trail at a ribbon cutting ceremony for South Central (N. 160<sup>th</sup> to N. 175<sup>th</sup> Streets) and North B (N. 200<sup>th</sup>-205<sup>th</sup> Streets).

Two sections of the Interurban Trail remain to be completed: the North Central Section from 175<sup>th</sup> to 192<sup>nd</sup>, some of which is already complete, and the bridges, which are being built in conjunction with the Aurora Corridor Project, N. 145<sup>th</sup> to N. 165<sup>th</sup> Streets (see story on page 4).

## Police volunteers needed

The Shoreline Police Department is seeking volunteers to staff the two Police Neighborhood Centers. Police volunteers are a vital part of Shoreline's Community Oriented Policing Team.

Some of the activities volunteers assist with include victim call backs, court reminder calls, false alarm tracking and citations, vacation house check, senior intervention program, community projects and events, pet licensing, neighborhood crime prevention surveys, operation ID, Block Watch, police activity maps, newsletters and neighborhood flyers, handle incoming calls, answer questions and direct residents to resources.

Volunteers must be willing to commit at least four hours per week and be able to work independently. A background check through the King County Sheriff's Office is also required. For volunteer brochure and preliminary application, please stop in at any of the following locations:

### Eastside Police Neighborhood Center

521 NE 165th  
(206) 363-8424

### Westside Police Neighborhood Center

624 NW Richmond Beach Rd.  
(206) 546-3636

### Shoreline Police Department

1206 N. 185th Street  
(206) 546-6730

## Community service opportunities in Shoreline

There are many opportunities in the City of Shoreline for residents to volunteer. Whether you are interested in gaining community service credit or just being a credit to the community, check out the options below.

### Recreation Program Volunteers

Shoreline Parks, Recreation and Cultural Services (PRCS) Department uses volunteers to staff one-time special community events and ongoing teen programs. Volunteers are needed to assist with set up, staffing and clean up at community events which take place primarily in the summer and fall. For information call (206) 418-3383.

Teens also volunteer at Richmond Highland Recreation Center teen programs, committing to regular shifts. For information contact Brady Sharpe at (206) 546-5944. In addition, the Empowering Youth Everywhere (EYE) leadership group provides an opportunity for teens to create projects and work in the community. Contact Waldo Ojeda at (206) 546-0662 for information.

### Storm Drain Stenciling

Community and school groups are invited to stencil storm drains with information that the water entering the drain "Leads to Stream." All materials and instructions are available in a kit that can be borrowed from the City. For information call the Environmental Program Intern at (206) 546-2659.

### Park Restoration

Individuals and groups can improve our existing Shoreline parks by working with the PRCS Department to remove invasive plants, planting native species, and maintaining soft trails. For information, call the Parks, Recreation and Cultural Services Department at (206) 546-5041.

### Neighborhood Projects

Neighborhood groups welcome volunteers to assist with both one-time community events and ongoing projects such as neighborhood clean-ups. Contact the Shoreline Neighborhood Coordinator at (206) 546-8564.

### Recycling Events

Volunteers who are at least 18 years old can assist at bi-annual Clean Sweep Recycling Events by offering information packets, conducting surveys, directing traffic, and/or loading bins. For information, call the Environmental Program Intern at (206) 546-2659.

### King County Explorers

Individuals ages 14 to 21 who are interested in investigating a law enforcement career can apply to participate to be an Explorer. The Explorer program includes extensive training, requires a commitment to attend regular meetings and requires participants to devote at least eight hours per month to activities and community service. For information, contact the Shoreline Police Department at (206) 546-6730.

## Financial stability *continued from page 1*

showed that Shoreline has an excellent culture. Just a few examples of what employees said in the survey include:

- 99% said they have a clear understanding of how their job fits with the mission of the City.
- 98% said they believe employees are willing to give extra to get the job done and to be responsive.
- 97% said they believe the organization treats employees with respect.

The City policy regarding reserves has also been an important part of keeping Shoreline financially stable. As you know, City governments are required by state law to adopt a balanced budget each year. There can be no deficit spending. How much is kept in reserve, however, is a City policy. Professional organizations that provide best practice guidelines for local governments recommend a minimum reserve of 15% of annual operating revenues.

Shoreline is set to end next year with a 30% operating reserve. This is a result of careful budgeting and spending by City departments to meet and even exceed City policy on reserves. Historically, Shoreline has maintained healthy reserves which served us well during our recent slow economic period, a time when other organizations were laying off staff.

This year we have seen some very exciting projects take off, which are the basis for another legacy of the first ten years.

We celebrated the groundbreaking for the North City

Project in May. In August, our biggest project was kicked off at the groundbreaking for the Aurora Corridor, N. 145<sup>th</sup> to N. 165<sup>th</sup> Streets and Interurban Trail Bridges Projects. We have completed all but the bridges and central section of the Interurban Trail, both of which are scheduled to be done by the end of next year.

Another project we completed



### **New sidewalks on 3rd Avenue NW**

this year was the 3rd Avenue NW Drainage Improvement Project that alleviated flooding problems for over 20 homes and surrounding streets. It also added sidewalks along 3<sup>rd</sup> Avenue NW and improved the quality of storm water flowing to Boeing Creek.

The second phase of improvements to the Spartan Recreation Center was also completed this year. This facility is a great example of how we can

accomplish more for less money by partnering with other agencies that provide services to the Shoreline community. As you know, the Shoreline School District owns Spartan Rec and the City operates it and paid for the renovations. The result is a valuable community asset that neither organization may have been able to provide on its own.

A lot is happening in Shoreline. This has undoubtedly been a year of construction. Although construction is messy and inconvenient, it is only temporary and we gain so much when it is complete.

Some of the other major accomplishments this year may not be as visible as construction, but they are no less important. We adopted an update to the Comprehensive Plan as well as master plans for Park, Recreation and Open Spaces, Surface Water and Transportation that will guide how the City makes improvements in the future.

We also changed our Code Enforcement Program based on community input. Some of the changes improve how we deal with vehicles abandoned on City right-of-way, junk vehicles on private property, residential garbage storage and exterior property standards (see story on page 8 for more information).

Those are just a few of the highlights of a long list of what we have accomplished this year. With these foundations in place, I look forward to seeing all that we can accomplish in the future as we continue to work together to improve our community.

## Who, what, where in the City of Shoreline

### City of Shoreline

Shoreline City Hall  
17544 Midvale Avenue N.  
Shoreline, WA 98133-4921  
(206) 546-1700  
Fax (206) 546-7868

City Hall Annex  
Home of Planning and  
Development Services Department  
and Public Works Department  
Highland Plaza  
1110 N. 175th St., Suite 105  
Shoreline, WA 98133

## CURRENTS

Summer 2005 Vol. 7 No. 9

Currents is produced by the  
City of Shoreline Communications  
and Intergovernmental Relations  
Department, (206) 546-0779.

**Editing, writing & design:**  
**Tami Beaumont, Debbie Tarry,**  
**Susan Will and Joyce Nichols**

Alternate formats  
available upon request.

### City Council

Mayor Ron Hansen  
Deputy Mayor Scott Jepsen  
John Chang  
Maggie Fimia  
Rich Gustafson  
Bob Ransom  
Janet Way

Meeting Location  
Shoreline Conference Center  
18560 First Ave. NE  
Mt. Rainier Room

Workshop Meetings  
First and third Mondays  
beginning at 6:30 p.m.

Regular Meetings  
Second and fourth Mondays  
beginning at 7:30 p.m.

Agenda Line  
(206) 546-2190

Televised City Council Meetings  
Cable Channel 21  
Tuesday noon and 8 p.m.  
Wednesday through Sunday  
6 a.m., noon and 8 p.m.

### Shoreline Police

#### Emergency: 911

Shoreline Police Station  
Chief Tony Burt  
1206 N. 185th St.  
Shoreline, WA 98133  
(206) 546-6730

Westside Neighborhood Police Ctr.  
Officer Leona Obstler  
624 NW Richmond Beach Road  
Shoreline, WA 98177  
(206) 546-3636

Eastside Neighborhood Police Ctr.  
Officer Deneese Elfenson  
521 NE 165th St.  
Shoreline, WA 98155  
(206) 363-8424

### City of Shoreline Web site

Information about meetings,  
projects and programs is  
available online.

[www.cityofshoreline.com](http://www.cityofshoreline.com)



17544 Midvale Avenue N., Suite 100  
Shoreline, WA 98133-4921

PRSR STD  
US Postage  
PAID  
Seattle, WA  
Permit No. 248

ECRWSS  
POSTAL CUSTOMER