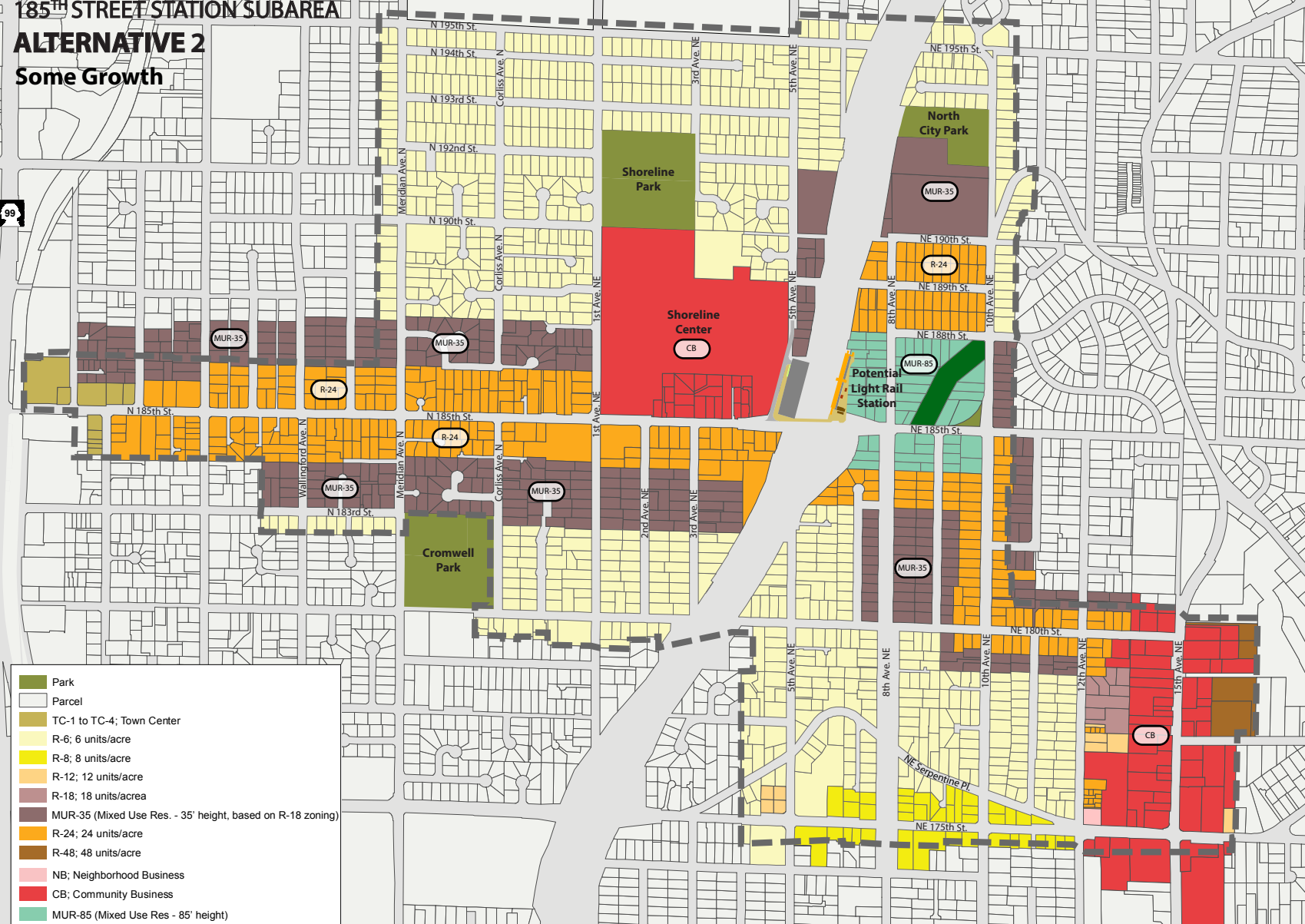


185TH STREET STATION SUBAREA

ALTERNATIVE 2

Some Growth

99



- Park
- Parcel
- TC-1 to TC-4; Town Center
- R-6; 6 units/acre
- R-8; 8 units/acre
- R-12; 12 units/acre
- R-18; 18 units/acre
- MUR-35 (Mixed Use Res. - 35' height, based on R-18 zoning)
- R-24; 24 units/acre
- R-48; 48 units/acre
- NB; Neighborhood Business
- CB; Community Business
- MUR-85 (Mixed Use Res - 85' height)
- Utility Corridor
- Potential Light Rail parking garage
- Phase 1 Zoning Boundary
- Study Area Boundary

NORTH

0 500 1000 Feet