

Proposed 2014 Comprehensive Plan Amendment Docket

Planning Commission January 16,
2014



Purpose of the Docket

- The State Growth management Act limits review of proposed Comprehensive Plan Amendments to no more than once per year.
- The GMA directs cities to create a docket that lists the amendments to be considered.

Proposed Amendments

- This year there are three amendments on the proposed docket.
- 1 City initiated amendment
- 1 privately initiated amendment (two separate property owners).



City Initiated Amendment

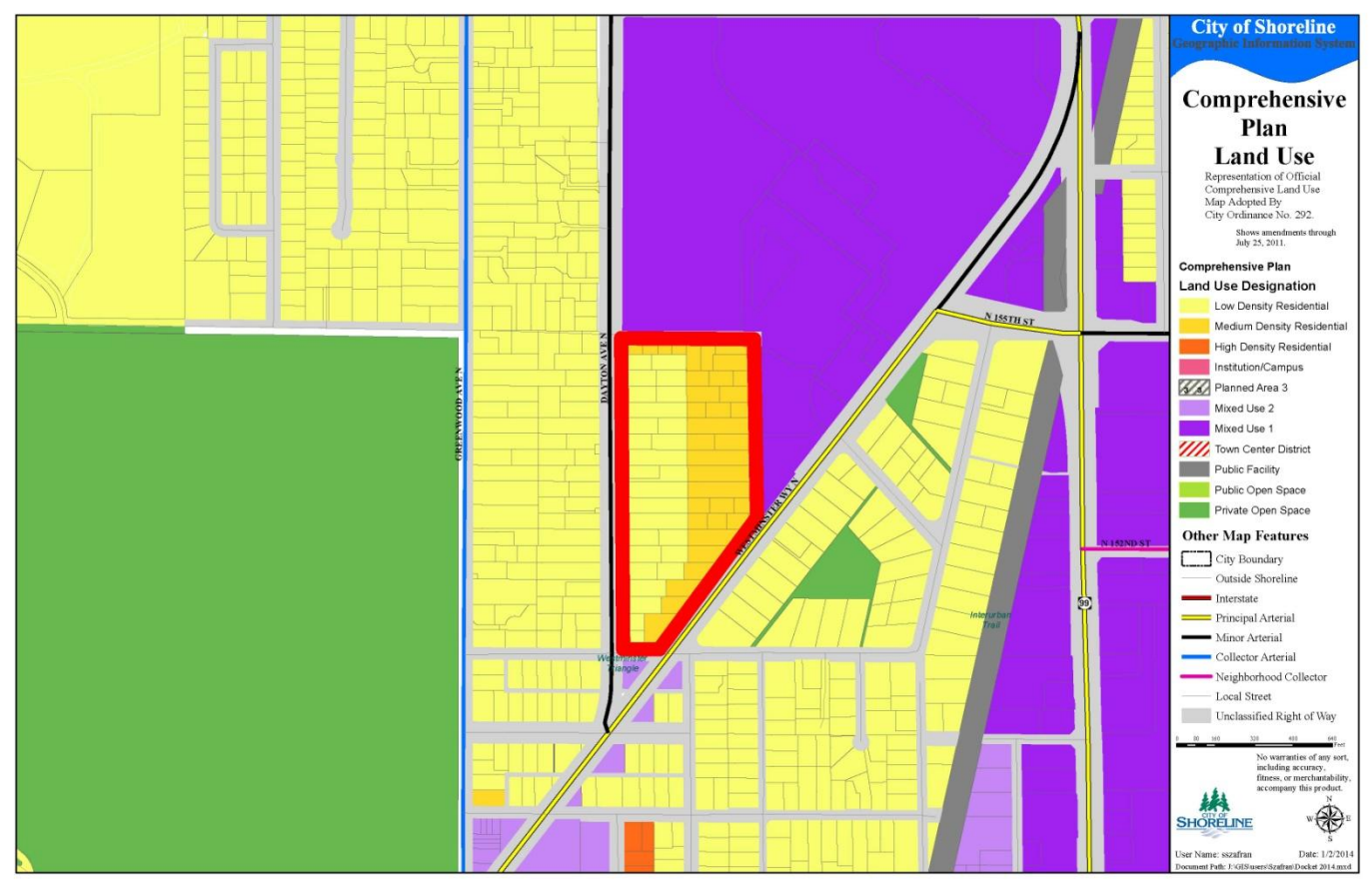
- *Consider amending the Point Wells Subarea Plan.*
- The amendment is a carry-over from the 2013 docket.

Privately Initiated Amendment

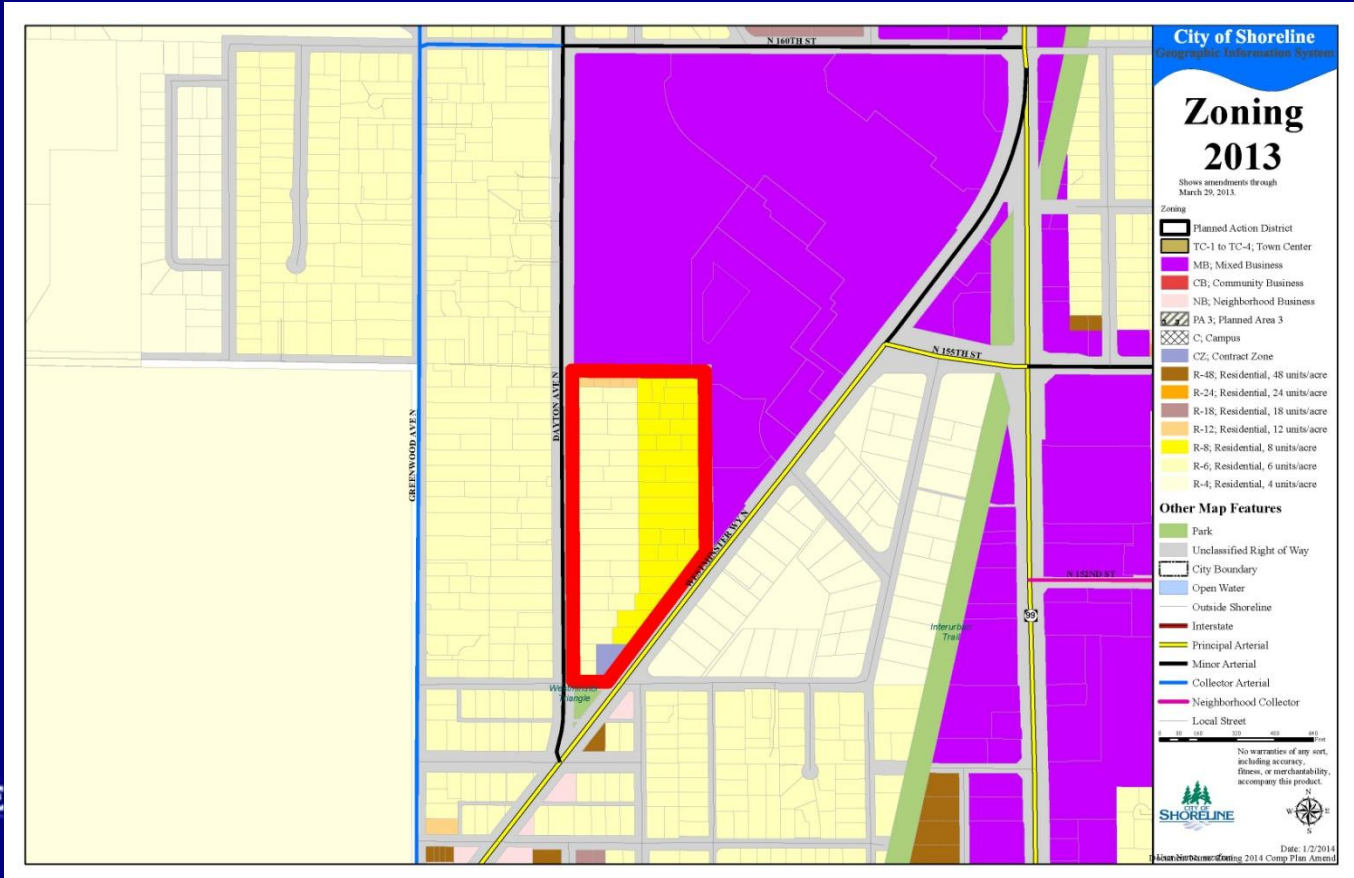
- Consider changing the Land Use Map from LDR to HDR for the area shown on the map.



Land Use Map



Zoning Map



Recommendation

- Staff recommends not adding the privately initiated amendment to the 2014 docket.