

# Zoning 2013

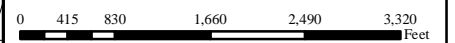
Shows amendments through  
March 29, 2013.

### Zoning

- TC-1 to TC-4; Town Center
- MB; Mixed Business
- CB; Community Business
- NB; Neighborhood Business
- PA 3; Planned Area 3
- C; Campus
- CZ; Contract Zone
- R-48; Residential, 48 units/acre
- R-24; Residential, 24 units/acre
- R-18; Residential, 18 units/acre
- R-12; Residential, 12 units/acre
- R-8; Residential, 8 units/acre
- R-6; Residential, 6 units/acre
- R-4; Residential, 4 units/acre

### Other Map Features

- MailingLabels\_September



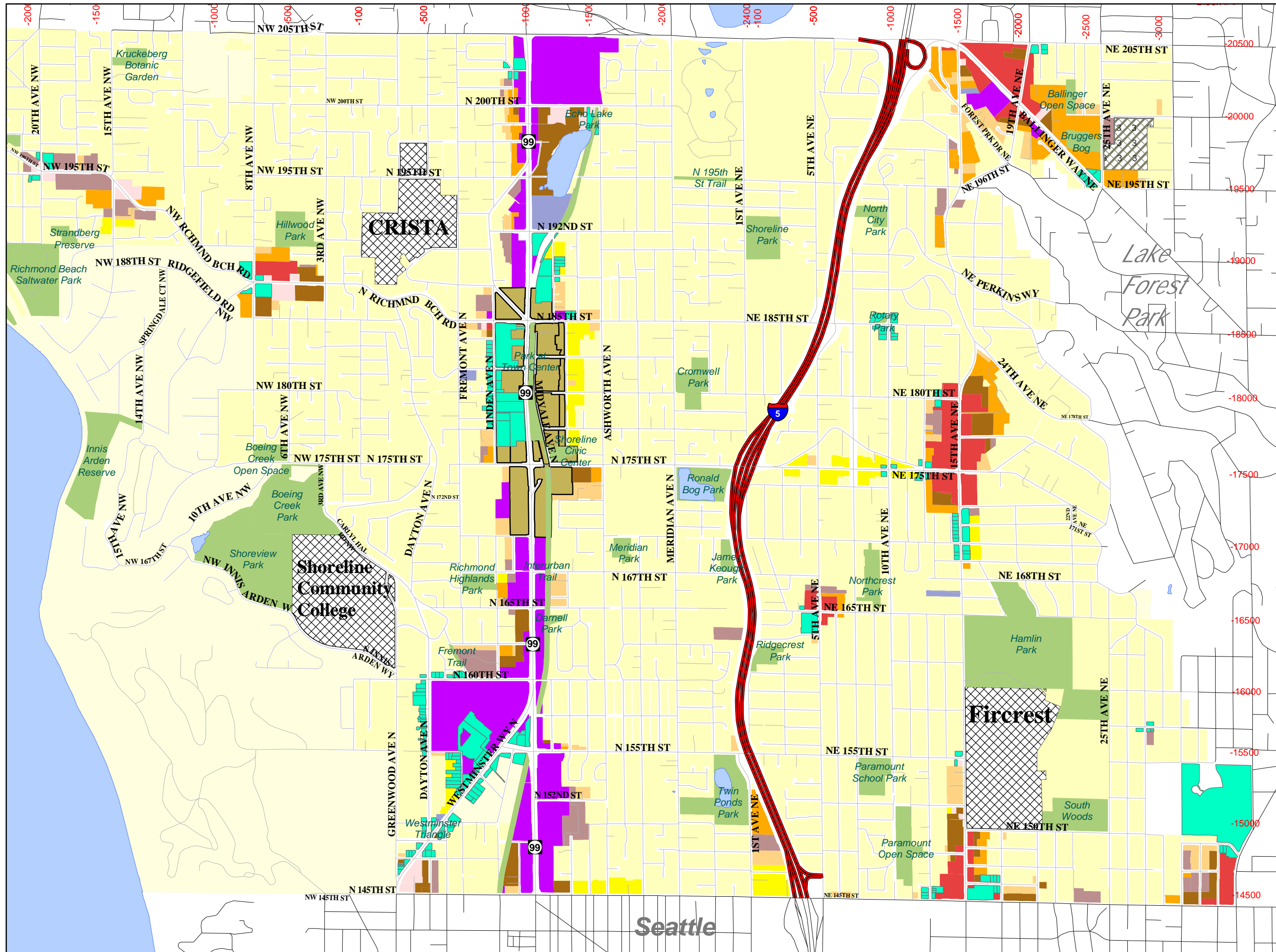
No warranties of any sort,  
including accuracy,  
fitness, or merchantability,  
accompany this product.



Date: 9/13/2013

User Name: hdelacruz

Document Name: Zoning\_labels\_September2013



Seattle