

Light Rail Station Area Planning Update

November 4, 2013



Long-Term Timeline

	2013	2014 - 2015	2016 - 2023	Beyond 2023
SHORELINE	<p>Station Subarea Planning Work Begins, Including Visioning and Design Workshops</p>	<p>Develop and Adopt Subarea Plans and Environmental Analyses for Station Subareas</p> <p>Update Land Use and Zoning Maps and Development Code Regulations</p>	<p>Adopt and Implement Supportive Plans and Policies for Station Subarea Redevelopment</p>	<p>Implementation of Adopted Plans and Policies</p> <p>Changes in Land Use and Redevelopment Will Occur Incrementally Over Decades</p> <p>Market Forces and Property Owner Decisions Will Influence How and Where Redevelopment Occurs</p> <p>It is Anticipated that Redevelopment Will Provide:</p> <ul style="list-style-type: none"> • A Variety of Housing Types • Mixed-Use Development • Complete Streets and Enhanced Connectivity in the Station Subareas
			<p>Right-of-Way Acquisition</p> <p>Final Design, Permitting, and Construction</p> <ul style="list-style-type: none"> • Light Rail Transit Trackway • Stations • Parking Structures 	
SOUND TRANSIT	<p>Link Light Rail DEIS Review and Comment Period through September 23, 2013</p> <p>Open House/Public Hearings August 14, 20, 21 & 22</p> <p>Sound Transit Board Will Identify Preferred Alternative, Including</p> <ul style="list-style-type: none"> • Station Locations • Elevated or At-Grade Tracks • Parking Configuration 	<p>Final Environmental Impact Statement Published</p> <p>Record of Decision Issued</p>		<p>Light Rail Service Operating</p>

Near-Term Timeline



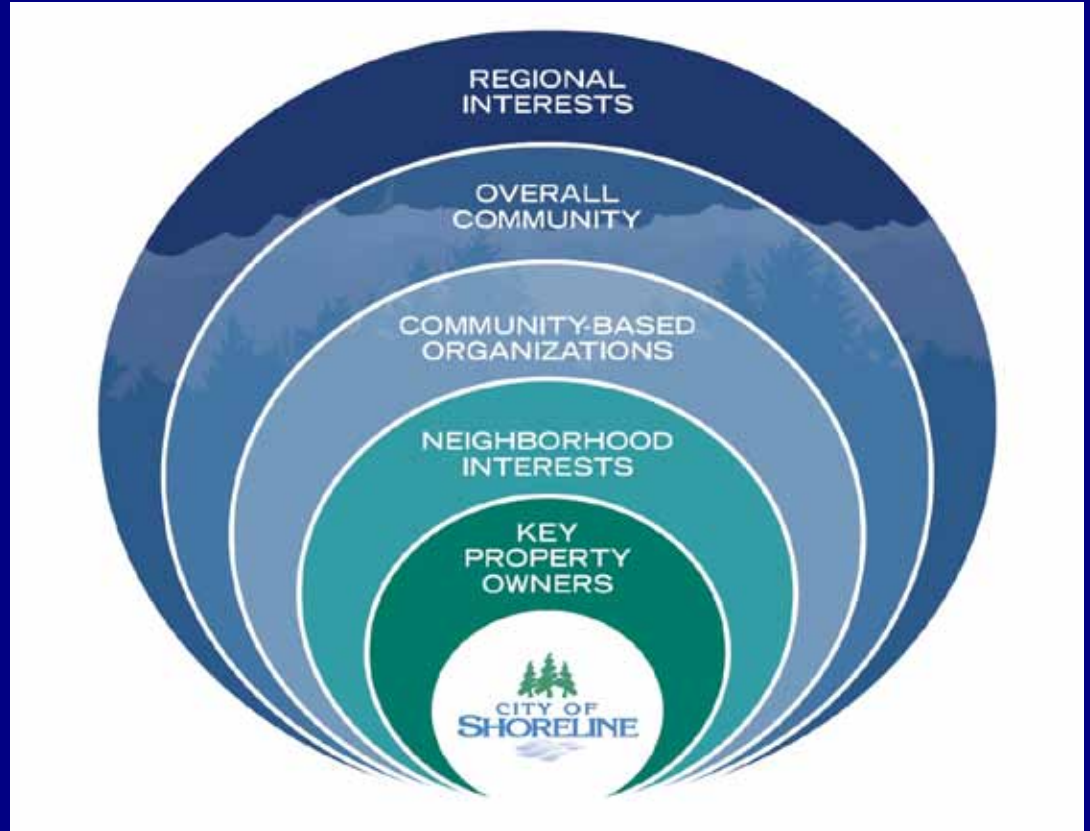
Visioning

- Korean Community – July 11
- 145th/155th Visioning Event – August 1
- Folks of Modest Means – August 7
- 185 SCC Visioning Event – August 22
- City Visioning Event – September 19

Public and Stakeholder Involvement Plan

Wide range of Stakeholders

Includes 185th and 145th Station Subareas
185th and 145th Station Walk/Bike Tours



Walking Tour Maps



Design Dialogues

- Interactive workshops with stakeholders culminating in a community open house to share and further refine ideas
- Participants will be asked to provide suggestions about how the area will transform over the next 10, 20 years and beyond

Design Dialogue

YOU'RE INVITED!

To a **DESIGN DIALOGUE WORKSHOP** for the 185th Street Station Subarea Plan

November 6, 2013, 6:00 to 8:00 pm
in the Shoreline Room, Shoreline Center
18560 1st Ave NE, Shoreline



What are the characteristics of areas where you spend your free time?



What attracts people of all ages, cultures, abilities, and interests to use the space?



Please help shape the future of the station subarea by providing your ideas and input!

We will be hosting a series of interactive workshop sessions on November 5th and 6th culminating in a community of open house meeting to share and further refine ideas. Workshop participants will showcase their creativity by drawing concepts for buildings and public spaces.

For more information, contact:

Miranda Redinger, City of Shoreline
mredinger@shorelinewa.gov and (206) 801-2513

www.shorelinewa.gov/lghtrail



What is the most beautiful, memorable, public place you've ever visited?

Participants will sketch and share ideas for elements such as:

- Neighborhood features needed to enhance character such as public art, gateways, signage, and additional amenities
- Parking strategies
- Sidewalks, trails, and other pedestrian and bicycle facilities
- Intersection and crossing improvements
- Affordable housing opportunities
- Neighborhood business, shopping, and services
- Offices, industry, and other employment opportunities
- Public open space enhancements and recreation facilities
- Landscaping and buffering
- Lighting and other safety features
- Green features for buildings, rain gardens, green stormwater infrastructure, and district energy

Station Citizen Committees



Next Steps

- Design Dialogue follow-up on January 16th
- EIS Scoping on January 16th
- Development of Alternatives
- Adoption of subarea plans which may include Comprehensive Plan and Zoning Designations and development regulations

Questions?

- Please contact Miranda Redinger at mredinger@shorelinewa.gov or
- Steven Szafran at sszafran@shorelinewa.gov

