

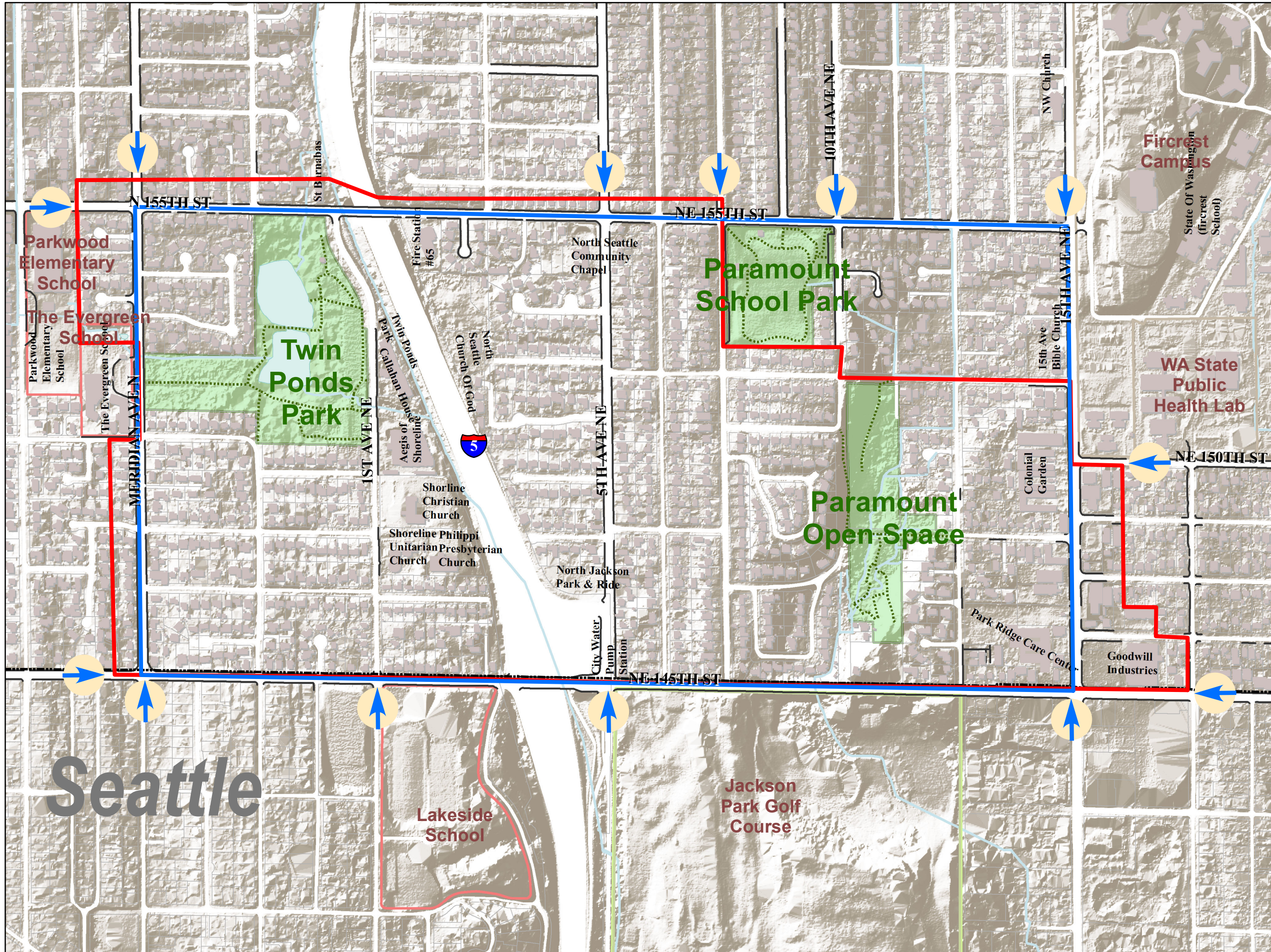
Topography NE 145th St Rail Station

- Mobility Study Area
- Land Use Study Area
- Sidewalk
- Trail
- Open Water
- Stream
- 10'
- Tax Parcel
- City Park
- Roadways Analyzed in Mobility Study

Topography

- 10'
- Tax Parcel
- City Park
- Roadways Analyzed in Mobility Study

0 180 360 720 Feet



Seattle