

Light Rail Station Subarea Study Boundaries - Comprehensive Plan Amendment

June 20, 2013

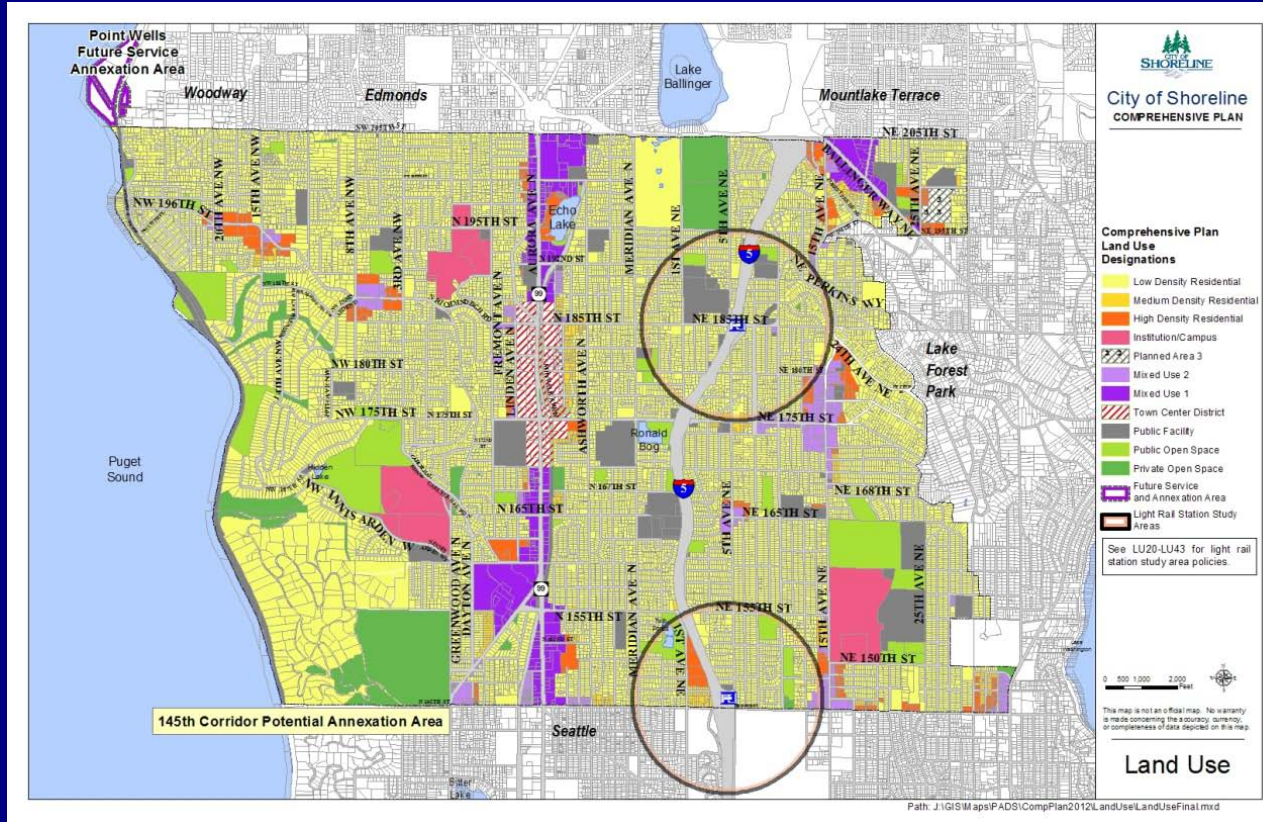
Planning Commission Meeting



Background

Initial study area boundaries were purposefully vague placeholders until staff had the opportunity to engage the public, develop criteria, and tour the station areas.

Current Comp Plan



Study Area Boundary Criteria:

- Walk and bike travelsheds
- Topography
- Comprehensive Plan policy direction
- Existing conditions
- Jurisdictional
- Homeowner preference

PC/CC Joint Meeting

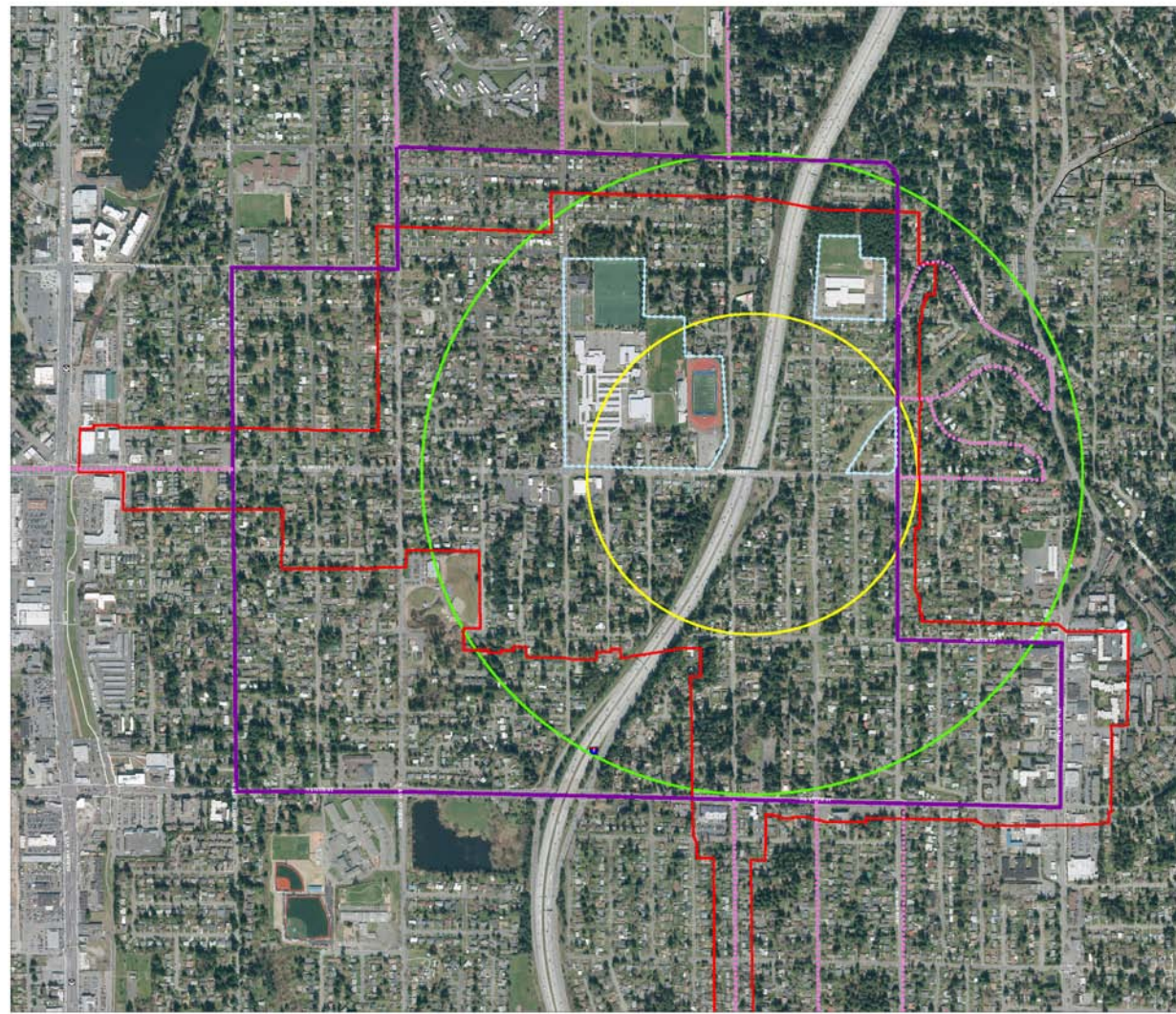
- Planning Commission and City Council agreed on Study Area Boundaries at their joint meeting on May 2nd for the Open House on May 22nd



Draft







NE 185th St Rail Station

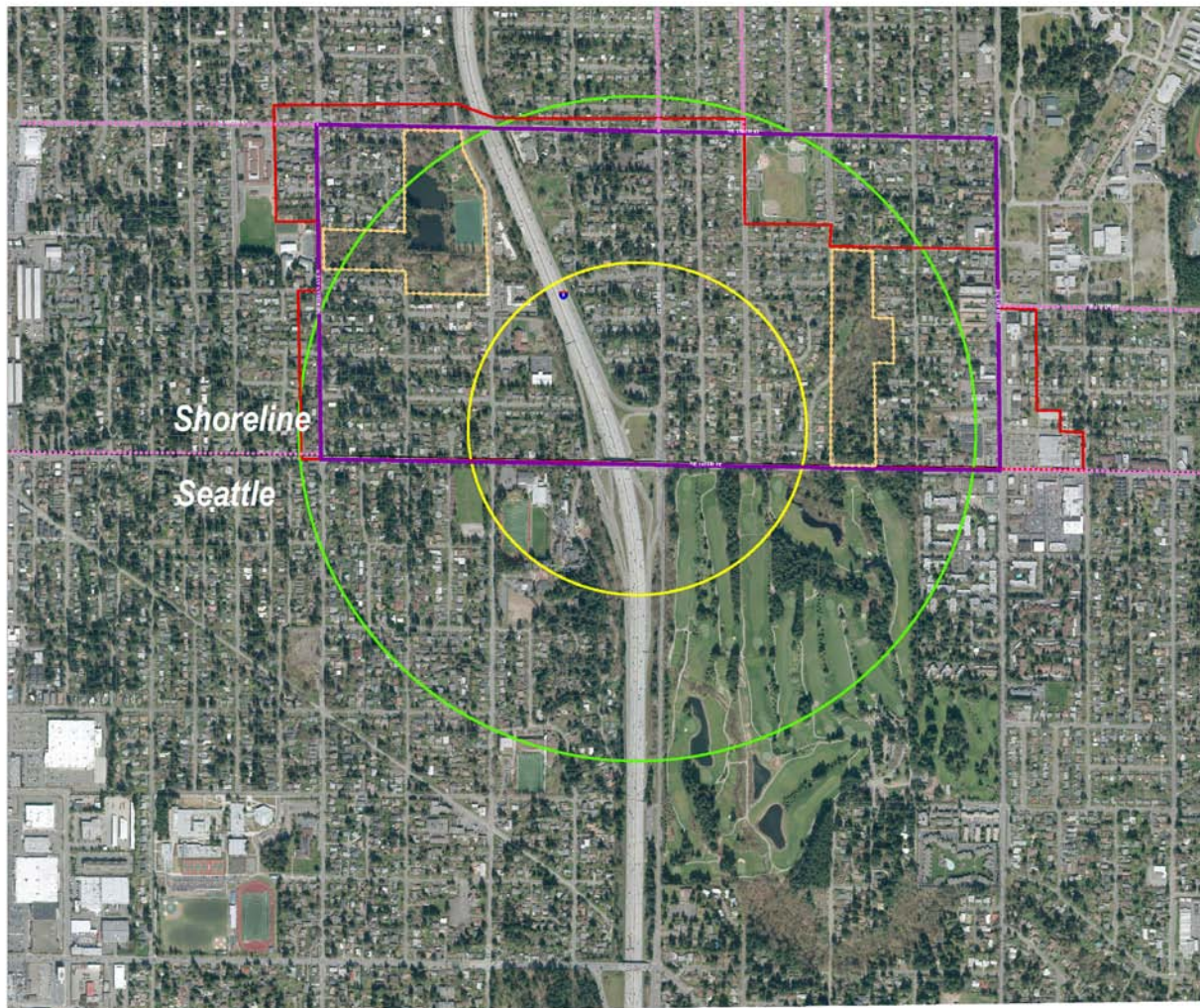
-  Mobility Study Area
-  Arterial included in Mobility Study
-  Land Use Study Area
-  Opportunity Site
-  1/4 Mile from proposed station
-  1/2 Mile from proposed station



Draft

NE 145th St Rail Station

-  Mobility Study Area
-  Actual included in Mobility Study
-  Primary
-  Environmental Asset
-  1/4 Mile from proposed station
-  1/2 Mile from proposed station



0 237.5 475 950 Feet



Proposed Changes (Pages 15-17)

- Remove ½ mile circle
- Remove Land Use Study Area from 5th
- Remove Mobility Study from 8th
- Remove Mobility Study from NE 187th and 188th
- Add Mobility Study for Meridian and 15th Ave NE
- Add Opportunity Site at Ridgecrest commercial area
- Add Paramount Park as an Environment Asset area

