



Utilities Element Goals and Policies

INTRODUCTION

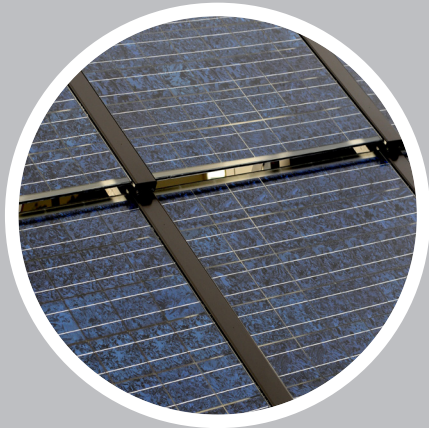
The Growth Management Act (GMA) requires the City to include a Utilities Element within its Comprehensive Plan consisting of the general location, proposed location, and capacity of all existing and proposed utilities, including, but not limited to, electrical lines, telecommunication lines, and natural gas lines (RCW 36.70A.070). The Utilities Element should also provide a framework for the efficient and predictable provision and siting of utility facilities and services within the city, consistent with each of the serving utility's public service obligations.

This Element contains the goals and policies necessary to support the City's responsibility for ensuring that residents are provided with basic utility services, and for coordinating with private utilities to ensure that the Comprehensive Plan is supported by utility infrastructure. Publicly operated utilities (water, wastewater, and surface water) are also addressed in the Capital Facilities Element. This element, in concert with the Capital Facilities and the Land Use Elements of this Plan, provides the goals and policies that guide utility provision within the city.

The Utilities Element Supporting Analysis section contains an inventory of utility services in the city, specifically electrical, natural gas, and telecommunication services (cable, telephone, etc.), and provides the foundation for the following goals and policies.

GOALS

- Goal U I.** Facilitate, support, and/or provide citywide utility services that are:
- consistent, reliable, and equitable;
 - technologically innovative, environmentally sensitive, and energy efficient;
 - sited with consideration for location and aesthetic; and
 - financially sustainable.
- Goal U II.** Facilitate the provision of appropriate, reliable utility services, whether through City-owned and operated services, or other providers.



Solar Panels



Waste Sorting Container

Goal U III. Acquire Seattle Public Utilities water system in Shoreline.

POLICIES

- U1.** Coordinate with utility providers to ensure that the utility services are provided at reasonable rates citywide, and that those services meet service levels identified or recommended in the Capital Facilities Element.
- U2.** Pursue alternative service provision options that may be more effective at providing services to our residents, including acquiring portions of the Seattle Public Utility water system, and examining options with regard to the expiration of the Shoreline Water District franchise (scheduled for 2027).
- U3.** Encourage and assist the timely provision of the full range of utilities within Shoreline in order to serve existing businesses, including home businesses, and promote economic development.
- U4.** Support the timely expansion, maintenance, operation, and replacement of utility infrastructure in order to meet anticipated demand for growth identified in the Land Use Element.

Consistency and Coordination

- U5.** Coordinate with other jurisdictions and governmental entities in the planning and implementation of multi-jurisdictional utility facility additions and improvements.

Mitigation and Efficiency

- U6.** Encourage the design, siting, construction, operation, and relocation or closure of all utility systems in a manner that:
 - is cost effective;
 - minimizes and mitigates impacts on adjacent land uses;
 - is environmentally sensitive; and
 - is appropriate to the location and need.
- U7.** Encourage the co-location or joint use of trenches, conduits, or poles so that utilities may encourage expansion, maintenance, undergrounding, and upgrading facilities with the least amount of disruption to the community or of service delivery.

Solid Waste

- U8.** Monitor solid waste collection providers for adequacy of service and compliance with service contracts.

- U9. Support *recycling* and waste reduction efforts throughout the community.

Electricity

- U10. Where found to be safe and appropriate, promote recreational use of utility corridors, such as trails, sport courts, and similar facilities.
- U11. Work with electric utility providers to limit trimming of trees and other vegetation to that which is necessary for the safety and maintenance of transmission facilities where feasible.
- U12. Promote the undergrounding of new and existing electric distribution lines, where physically and financially feasible, as streets are improved and/or areas are redeveloped, based on coordination with local utilities.

Telecommunications

- U13. Minimize impacts of telecommunication facilities and towers on the community.
- U14. Promote the undergrounding of telecommunication lines in coordination with the undergrounding of other utilities and capital facility systems.
- U15. Support the provision of high-quality cable and satellite service throughout the community.
- U16. Promote opportunities for distance learning and telecommuting to implement economic development and climate initiatives, such as encouraging more home-based businesses that provide jobs without increased traffic.
- U17. Encourage and work with telecommunication providers to develop networks which employ technologies that increase interconnectivity between different networks.
- U18. Work with utility companies and public institutions to develop a full range of community information services available to citizens and businesses through the telecommunication network.

Wireless Communications Facilities

- U19. Facilitate access to reliable wireless communications services throughout the city, including increasing the service area on the western side of the city.

Special **recycling** collection, natural yard care, and sustainability events have been a part of the City's Environmental Services Program for more than ten years. Popular annual events include Recycle Fest and Earth Day Every Day. For more information about events or recycling programs, visit the Environmental Services web page at:

<http://www.shorelinewa.gov/index.aspx?page=582>.

- U20.** Protect community aesthetics by planning for well-sited and well-designed wireless service facilities that fit unobtrusively with the environment.
- U21.** Manage the placement of all communication antennas, antenna support structures, buildings, and associated equipment to promote efficient service delivery and avoid unnecessary proliferation.

Natural Gas

- U22.** Coordinate with natural gas utilities for improvements and expansion throughout the community, and support the eventual provision of full coverage of natural gas services.



Street Lamp