

Coal Train Environmental Impact Statement

Gateway Pacific Terminal
Scoping Period



Project Description

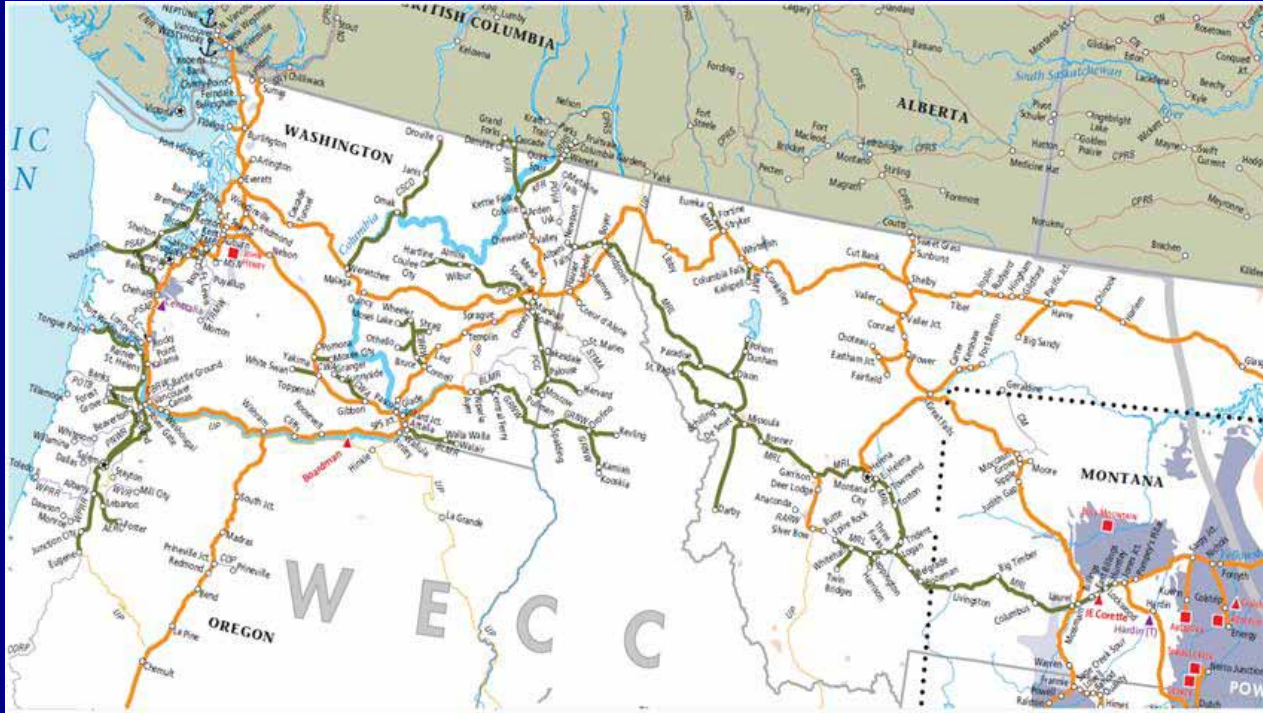
- Construction of a new terminal to receive an expected 54 million tons of coal annually from Montana and Wyoming via Burlington Northern Santa Fe (BNSF) railroad tracks along the Puget Sound to Cherry Point – north of Bellingham

EIS Scoping

The City and the public can provide scoping comments to the lead agencies by January 21. Scoping comments provide input on the alternatives, breadth, and issues to be analyzed in the EIS.

- Alternative plans, routes, methods, and facilities
- Cultural, natural, economic, land use, and property resources
- Significant, unavoidable, and adverse impacts
- Avoidable, minimized, and mitigated impacts

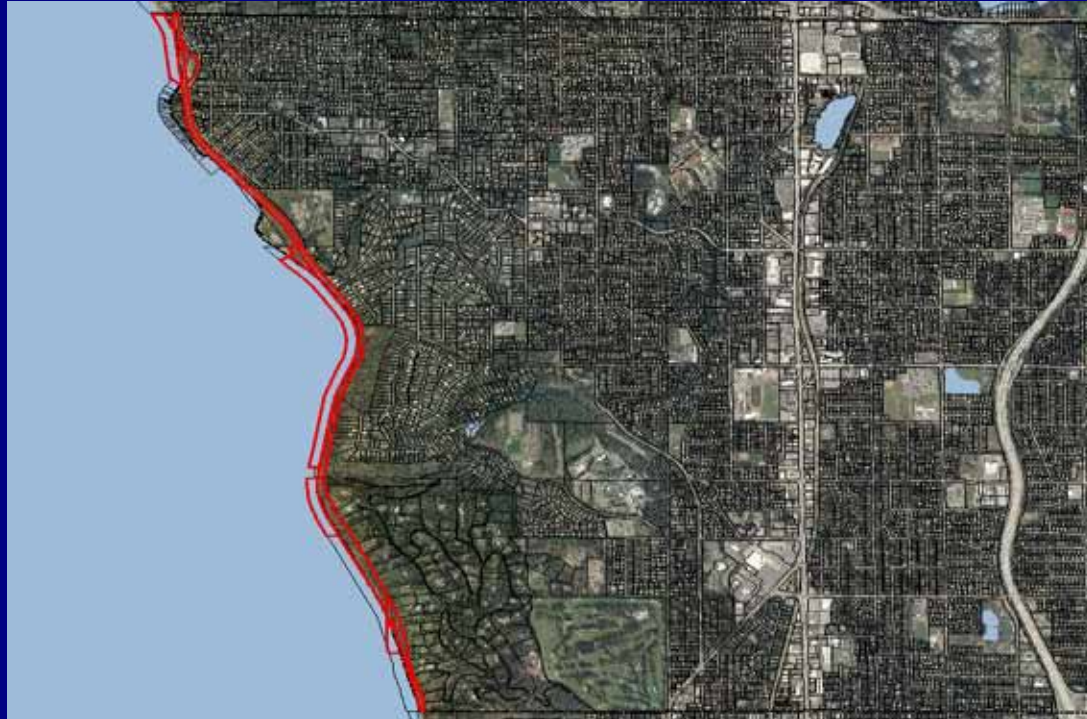
Train Routes



Train routes



Shoreline Train Route



Terminal Site



Gateway Pacific Terminal at Cherry Point

- 1500 acres industrially zoned, natural deep water port
- Proposed wharf & trestle within DNR Cherry Point Aquatic Reserve
- Terminal facility & rail spur would impact approximately 162 acres of wetlands, 2 streams.

Potential Impacts

- Train Traffic: noise, vibrations, diesel emissions, coal dust
- Economic: increased jobs, decreased property values
- Regional: car congestion / crossing improvements, wetlands, streams, and Puget Sound
- From Asia: climate change, ocean acidification, air pollution

Recommendation

- Suspend public comment rules for this meeting to allow for more extended public comment following the staff report presentation.
- Determine issues that the lead agencies should address in the development of the Draft EIS.