

Sunset School Park

Joint Use Agreement Addendum

December 10, 2012



Overview

- Joint Use Agreement
- Sunset School
- Site Addendum
- Capital Financial Impact
- Annual Maintenance Financial Impact
- Next Steps

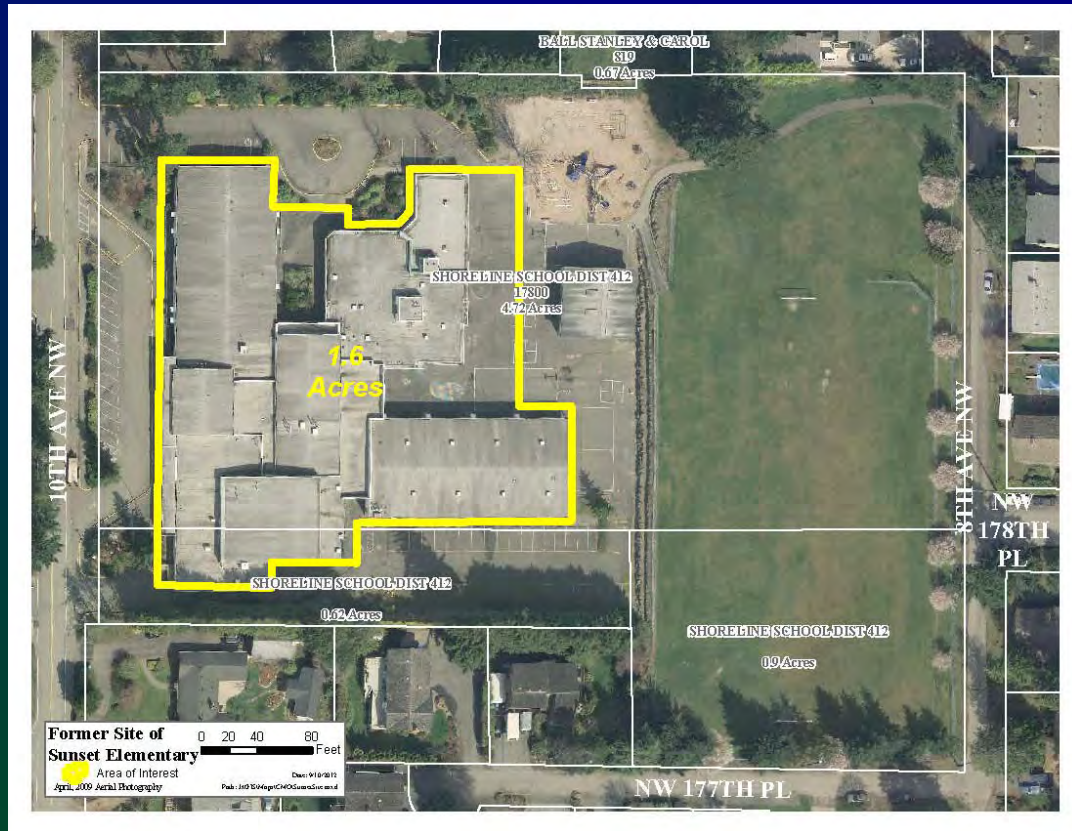
Joint Use Agreement (JUA)

- Established in August 2000
- Allows cooperative use of City and District facilities for community benefit
- Addendums to JUA identify specific sites with extended usage

Sunset School

- 2007 - Closed as a school site
- 2008 - Friends of Sunset Park community group organized
- 2009 - Master Site Plan Process for school site began
- 2010 – Master site plan approved by Council and School Board

Current School Site



Sunset Master Plan



Sunset School Site Addendum

- Allows community use as a park until needed for a school
- District will remove school building and foundation
- City will assume development, maintenance and scheduling of site
- City Option to Purchase site if declared surplus by District

Addendum Language Modifications

5. Memorial Garden

Change language from “maintain” to “retain”

7. Facility Development

Add “until such time that the City and School District mutually agree to its removal by the City with a funded option to develop the transition zone outlined in the master plan.”



Capital Financial Impact

- 2013 – 2019 Capital Improvement Plan
- \$204,990 for capital improvements
- KC Hidden Lake sewer project mitigation funds
- Evaluate other grant / funding opportunities for future use

Annual Maintenance Financial Impact

- Transfer maintenance from field next to Shoreline Stadium to Sunset site
 - Includes mowing, fertilizing, aeration, over seeding
 - Similar in size to currently developed portion of Sunset School
- Additional expenses for garbage collection, Sanikan rental
- City will retain any rental income (minimal amount)
- Staff anticipates net increase of approx. \$8,000



Next Steps

- Council approval of Addendum scheduled for January 2013
- Feb / March - City will assume maintenance responsibility
- Feb / March - City will meet with community to determine Phase I improvements
- Summer 2013 - Design / Permitting
- Fall 2013 – Spring 2014 - Construction of Phase I improvements