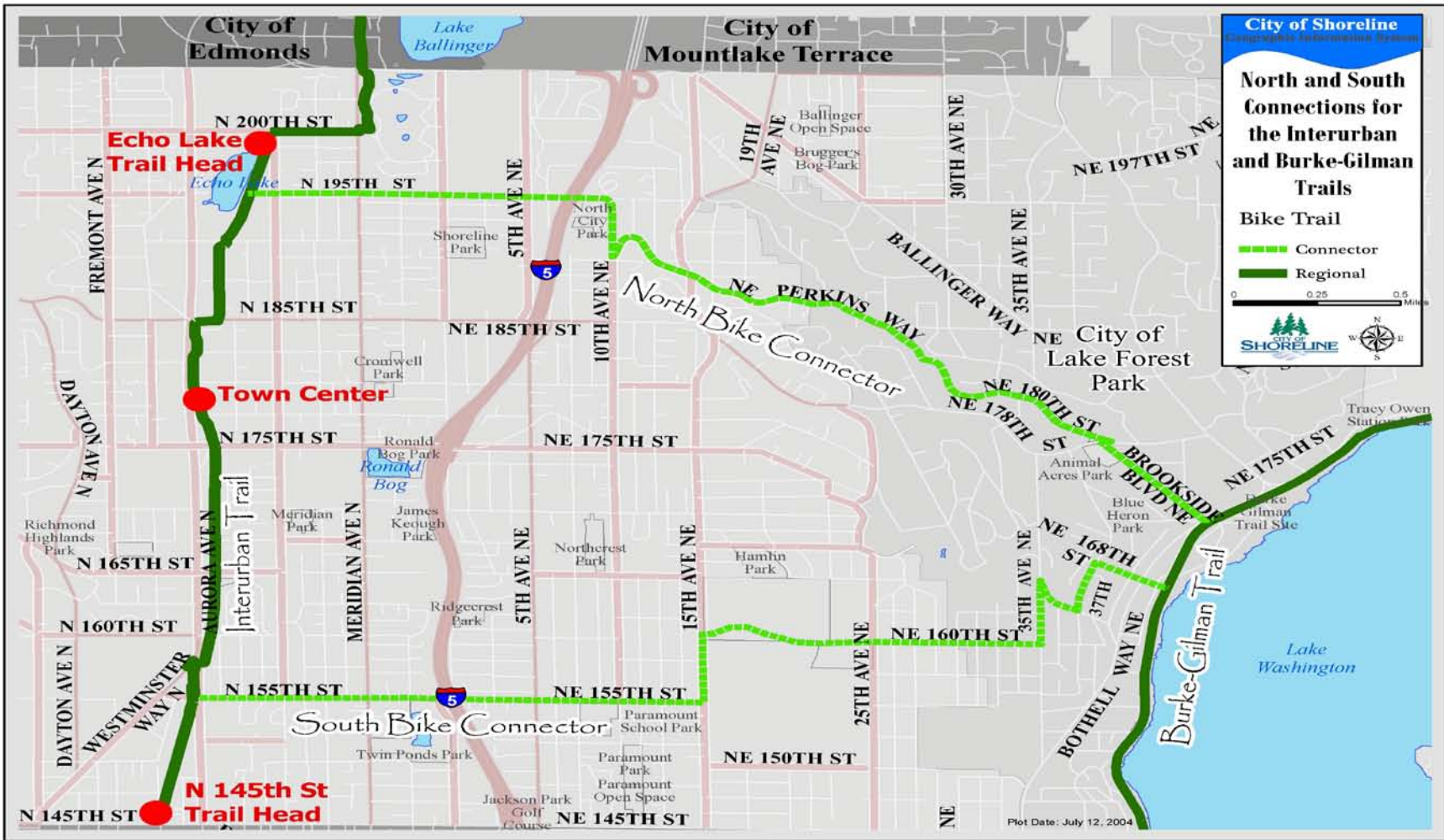




City Council Meeting Presentation

Echo Lake Park

Master Plan



City of Shoreline
 Planning and Community Services

North and South Connections for the Interurban and Burke-Gilman Trails

Bike Trail

- Connector
- Regional

0 0.25 0.5 Miles

Plot Date: July 12, 2004

Echo Lake Park Improvement Project Area



- City of Shoreline
- Seattle City Light



Information Gathered

- Topographic survey
- Wetland Delineation
- Environmental Critical Area Review
- Vegetation Assessment
- Reviewed Police Incident Reports
- Crime Prevention Through Environmental Design (CPTED) Review
- Discussions with Seattle City Light



Community Outreach and Participation

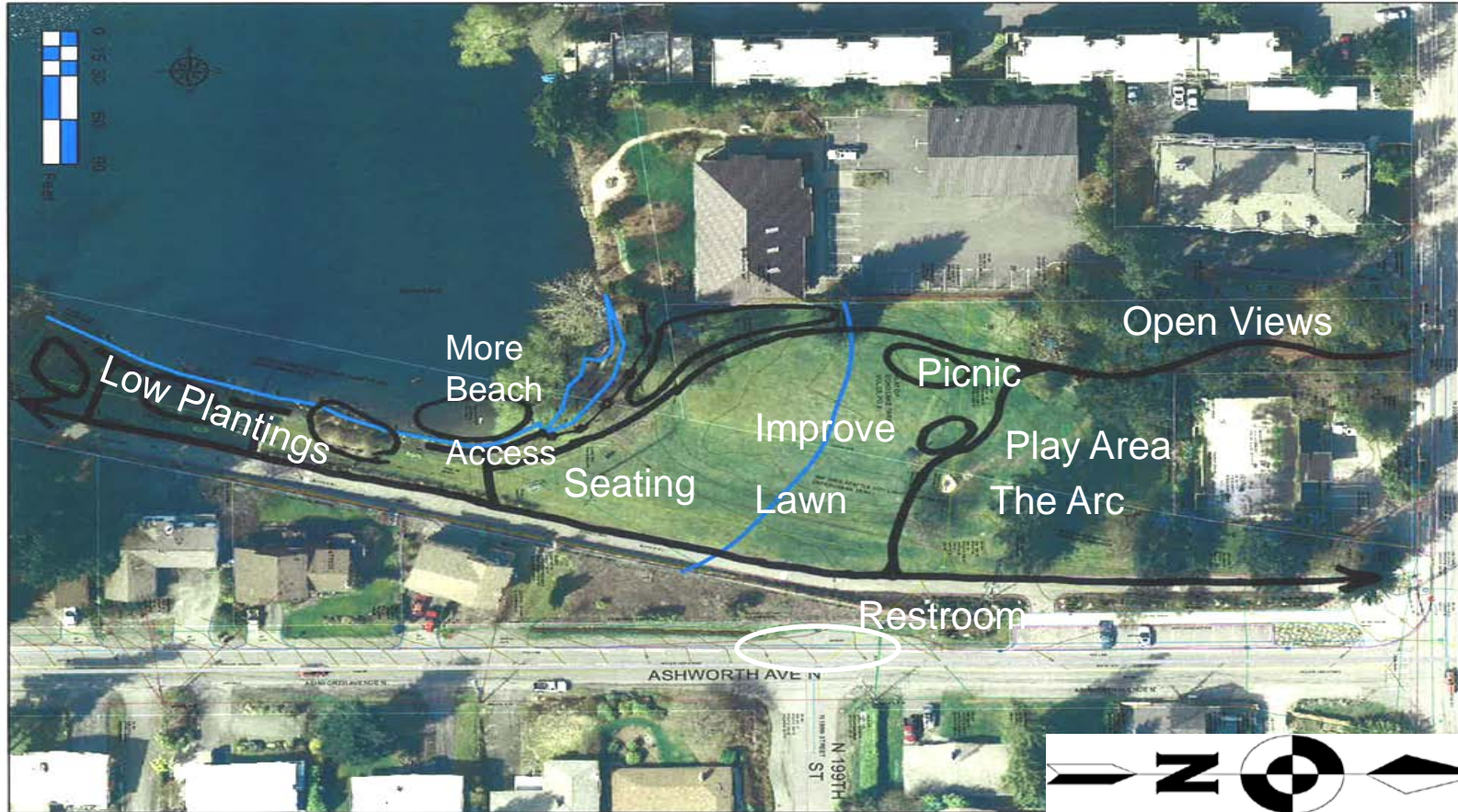


- Met with adjacent neighbors
- Attended picnic in 2011 and 2012
- Held three public meetings
- Postcard announcements, signs at park,
- current articles, website
- Received over 150 comments through
- Email, meetings, and comment forms

Echo Lake Park Existing Conditions



Design Ideas



Public Feedback on Draft



Echo Lake Park Draft Master Site Plan



Funding and Schedule



\$347,000 2007 King County Trail Levy

Project Schedule

- SEPA Review Fall
- Public Meeting November 20
- PRCS Board Final Review December
- City Council Adoption January

Phase I Design 2013

Phase I Construction 2013/14