



Parks, Recreation and  
Cultural Services  
Board

**May 24, 2012**



**Parks, Recreation and Cultural Services Board  
2012 Meeting Schedule**

<b>Date:</b>	<b>Time</b>	<b>Location:</b>
June 28, 2012	7:00 p.m.	Shoreline City Hall, Council Chambers
July 26, 2012	6:00 p.m.	Annual Parks Tour
August 23, 2012	7:00 p.m.	Shoreline City Hall, Council Chambers
September 27, 2012	7:00 p.m.	Shoreline City Hall, Council Chambers
October 25, 2012	7:00 p.m.	Shoreline City Hall, Council Chambers
December 6, 2012	7:00 p.m.	Shoreline City Hall, Room 301



Parks, Recreation & Cultural Services Board

**Agenda**

May 24, 2012  
7:00 p.m.

City Hall Council Chambers  
17500 Midvale Avenue N

7:00 p.m.	1. Call to Order / Attendance		Chair
7:03 p.m.	2. Approval of Agenda	Action	Chair
7:05 p.m.	3. Approval of Minutes	Action	Chair
7:10 p.m.	4. Public Comment		
	_____ Unfinished Business _____		
7:15 p.m.	5. Approval of Piano Time Artists	Action	Ros Bird
	_____ New Business _____		
7:20 p.m.	6. Tree Board Work Plan <ul style="list-style-type: none"> <li>• Bellevue Urban Forest Strategy</li> <li>• Sustainability Indicators</li> <li>• CIP Projects</li> <li>• Maintenance Plan</li> </ul>	Information	Dick Deal Tom Kuykendall Juniper Nammi Tricia Juhnke Kirk Peterson
8:30 p.m.	7. Sunset School Update	Information	Dick Deal
8:40 p.m.	8. Staff Reports		
9:00 p.m.	9. Adjourn		

**Park Board Packet Attachments:**

- Minutes from the April 26, 2012 Parks Board Meeting

**Dates to Remember:**

- **Dance Recital** 6/2/2012 10:00 - 1:00: Shoreline Auditorium
- **Shoreline Farmers Market** 6/16/2012 10:00 - 3:00 PM : Shoreline City Hall parking garage

The Parks, Recreation & Cultural Services Advisory Committee meeting is wheelchair accessible. Any person requiring a disability accommodation should contact the City Clerk's Office at (206) 801-2230 in advance for more information. For TTY service, call (206) 546-0457. For up-to-date information on agendas, call (206) 546-2190.



## Meeting Minutes for the Parks, Recreation and Cultural Services Board Meeting

April 26, 2012  
7:00 p.m.

Shoreline City Hall  
Council Chambers

---

### 1. **Call to Order/Attendance**

The meeting was called to order at 7:02 p.m. by Chairman Clements

Park Board Members Present: Joseph Neiford, Ellen Anderson, Boni Biery, Katie Beth, William Clements, Jesse Sycuro, Kevin McAuliffe, Kayla Caldwell

Excused Absence: Carolyn Ballo

City Staff Present: Dick Deal, Director; Lynn Cheeney, Recreation Superintendent; Kirk Peterson, Park Superintendent; Ros Bird, Public Art Coordinator; Lynn Peterson, Administrative Assistant III

### 2. **Approval of Agenda**

**Mc Auliffe moved to approve the agenda as written, Mr. Sycuro seconded. The motion carried.**

### 3. **Approval of Minutes**

**Mr. McAuliffe moved to approve the minutes as written. Ms. Biery corrected the minutes to include her as present at the meeting. Ms. Biery seconded the motion to pass the minutes as amended.**

### 4. **Public Comment**

No public comment

### 5. **Sculpture Stroll**

Ms. Bird introduced the concept of the Arts Al Fresco event via ppt which includes a Gallery opening at City Hall, Sculpture Stroll, and Piano Time along the Park at Town Center and at Kruckeberg Garden. The sculptures recommended by the public art subcommittee were presented for approval.

**Chairman Clements called for the motion to approve the sculptures as proposed. So moved by Ms. Biery. Seconded by Mr. Sycuro. The motion carried.**

### 6. **Ronald Bog Event Proposal**

Ms. Bird introduced Cynthia Knox, Shoreline artist and resident who presented the idea of an arts event at Ronald Bog Park via ppt. The event is described as connecting people with people, people with nature, and people with place: Past, present and future. The event has

three components that include sculptures in place for 2 weeks, sculptures made from found materials that would be left in place until they disintegrate and a day of celebration with the Duwamish tribe with local artists and music. The date is projected to be the end of August or the first of September.

**Chairman Clements called for the motion to approve the Ronald Bog Park arts event as presented. Ms. Biery moved, Mr. McAuliffe seconded. Motion carried.**

#### **7. Kruckeberg Garden Project/Program Review**

Ann Jacobus, KBG Board President, and Emily Sprong presented the garden's 2011 projects and programs for review and 2012 goals as illustrated in the attachment to the agenda. They also covered the educational component of the garden as documented in the attachment to the minutes.

#### **8. Meridian Park Wetland**

Ross Heller, Capital Projects Manager, presented the Meridian Park Environmental Enhancement Plan (See the pdf attachment to the minutes). Several trees will be removed and 58 will be replaced in more appropriate places along with over 100 native shrubs, 1500 native groundcover plants and 77 emergent plugs. The funding for this project comes through Surface Water Management with an estimated cost of \$100-\$150,000. An open house will be hosted toward the end of May in the park. Construction is expected in August or September, planting the latter half of Oct. Trail enhancement, an overlook on the east side of the park and improved drainage for surface water management would also be included.

An update will be presented to the Board following the open house.

#### **9. Tree Board Business**

Mr. Deal stated that May's meeting will be dominated by the creation of a 2012 Tree Board work plan. His intention is to have staff from the Department of Natural Resources and Staff from the City Planning department in attendance as a resource. Mr. Peterson will provide a maintenance plan for tree work in 2012.

ROW use applications are currently being reviewed by city PW, PC & D and Parks staff specific to addressing public requests for tree work in the public ROW to guarantee consistency and compliance with new Tree City USA guidelines.

Seattle City Light has been contacted to coordinate conversations with neighborhoods and for consistency in tree management planning purposes.

Ms. Biery reminded the Board of the Urban Tree Symposium on May 18.

Chairman Clements referenced extensive tree work happening in the ROW in the Greenwood area of Seattle as an example of large-scale work.

Chairman Clements urged careful documentation of all tree work undertaken to create public awareness that may result in the generation of funds needed to move forward while also establishing the credibility of the newly designated Tree Board. Chairman Clements suggested that the two major guiding principles of the Tree Board will be increasing the *quantity* and *quality* of the tree canopy in Shoreline.

**10. Staff Reports**

Ms. Bird presented the upcoming gallery opening on May 2nd, Kruckeberg Garden Temporary Art Installation maquettes from SPU students, Piano Time and the Desire Lines site-specific art proposal.

Mr. Peterson updated the Board on the RBSW Park Exercise Equipment bid, construction of the community garden, the arson at the RBSW Park restroom, arson at Hillwood Park, the llamas and goats grazing in parks for vegetation management, volunteer projects on Earth Day and work projects by King’s High School and ForTerra.

Ms. Cheeney reported the success of Spring Break Camp, Teen Adventure Camp (ages 6<sup>th</sup>-8<sup>th</sup> grade), Specialized Recreation forum, April Pool’s Day, Shoreline Eats4Health, Volunteer Soiree and the KBG Mother’s Day sale.

Mr. Deal presented in Ms. Colaizzi’s absence the community garden dedication, DogFest and the east side off leash area search.

**11. Meeting Adjourned**

**With no further business, Chairman Clements called for the motion to adjourn. Ms. Biery moved, Mr. McAuliffe seconded. The meeting of the Parks Board adjourned at 8:48 p.m.**

\_\_\_\_\_  
Signature of Park Board Chair

\_\_\_\_\_  
Date

\_\_\_\_\_  
Signature of Minute Writer

\_\_\_\_\_  
Date

## KBGF Education 2012 - Adult

### Public Tours

We continue to expand our adult tour offerings, this year adding new free (one-hour) specialty tours concurrent with MsK Nursery Sales. We will also continue to offer the following public tours: full length general tours, short intro tours, and full length specialty tours. Our goal for 2012 is to increase the number of participants on tours, and minimize tour cancellations. Our successful Living Social promotion sold 306 packages (earning \$1845) - for a potential total of 760 tour participants. We have booked 30 Living Social tour slots so far.

### Private Tours

Private tour bookings are down from previous years. While there is more we could do to promote private tours, this marketing has taken a back seat to administering the Living Social promotion.

### Tours

	2011 - scheduled	2011 - actual	2012 - planned
General (Paid)	6	5	5
Intro (Free)	6	6	10
Specialty (Paid)	5	4	4
Specialty (Free)	NA	NA	3
Private (Paid)	9	8	2 (will hopefully increase)

- **2012 Tour Goals: 250 people on tour (up from 200 in 2011) and no cancellations for lack of signups.**
- **Current status: 24 toured so far, 54 already signed up - 31% of goal.**

### Workshops

Based on previous years' workshop registrations we have split the workshop program into two types: workshops, and gardening seminars. We will continue to offer Hypertufa, Sand-Casting and Propagation workshops as before, but we will now be offering container gardening classes as free seminars. If participants wish to purchase plants and other materials at the time of the seminar, Garden Staff will provide hands-on planting support. Seminars will be concurrent with Nursery Sales, and will support Nursery Sale themes.

### Workshops

	2011 - Scheduled	2011 - Actual	2012 - Planned
Workshops	7	3	6
Seminars	NA	NA	3

- **2012 Workshop Goal - not cancel any workshops or seminars**
- **Current status: first seminar had 12 participants, 18 workshop registrations so far.**

### Online Registration

We have added our own online registration system to make it easier for people to sign up for tours. This system allows us to offer discounts to generate more signups and we are in the middle of a 25% off early bird promotion. This discount will continue through May 15 in honor of the 25<sup>th</sup> anniversary of the Mother's Day Sale.

# *Arts al Fresco: Sculpture Stroll*

## Attachment

Recommended Artwork

July 2012 – July 2013



---

*Parks, Recreation & Cultural Services*

*Providing life-enhancing experiences and promoting a healthy community.*

*To bring our culture to life and transfer it to the next generation.*



**Arts al Fresco** Opening event Thursday, **August 2, 2012, 6:00-8:30 p.m.**  
includes the *Sculpture Stroll*, *Piano Time* and a City Hall Gallery Opening

***Sculpture Stroll***, a year-long outdoor sculpture exhibit

Artwork selected by panel through Request for Proposals (RFP) process

All artwork on loan from the artists

Artech service award covers most of installation

Maintenance staff will pour concrete pads and assist with installation as needed

New sculptures will be selected for 2013-2014 exhibit



---

*Parks, Recreation & Cultural Services*

*Providing life-enhancing experiences and promoting a healthy community.*

*To bring our culture to life and transfer it to the next generation.*

# Ni ne sculptures for the City Hall Lawn and the Park at Town Center



Jeff Tangen *Red Glow*



Jeff Tangen *Celebration*



Leon White  
*Miracle Grow with Bluebird*

Attachment



*Parks, Recreation & Cultural Services*  
*Providing life-enhancing experiences and promoting a healthy community.*  
*To bring our culture to life and transfer it to the next generation.*



Kevin Au *Skater*



Lin McJunkin  
*Mt Rainier Glacial*



Lin McJunkin  
*Kelp Totem*

Attachment



*Parks, Recreation & Cultural Services*  
*Providing life-enhancing experiences and promoting a healthy community.*  
*To bring our culture to life and transfer it to the next generation.*



Michael Johnson  
*Monument to the Ordinary*  
(milk can)



Rodger Squirrell    *Sail*



Rodger Squirrell    *Torso*

# Attachment



*Parks, Recreation & Cultural Services*  
*Providing life-enhancing experiences and promoting a healthy community.*  
*To bring our culture to life and transfer it to the next generation.*

Selected for Kruckeberg Botanic Garden



Rodger Squirrell  
*The Pincher*



Lin McJunkin  
*The Sea, Within*



Tony Angell *Surf Birds*  
*(includes a 2<sup>nd</sup> piece)*



*Parks, Recreation & Cultural Services*  
*Providing life-enhancing experiences and promoting a healthy community.*  
*To bring our culture to life and transfer it to the next generation.*



# Attachment

Thor Myhre  
*Zen Beacon* (alternate piece if needed)

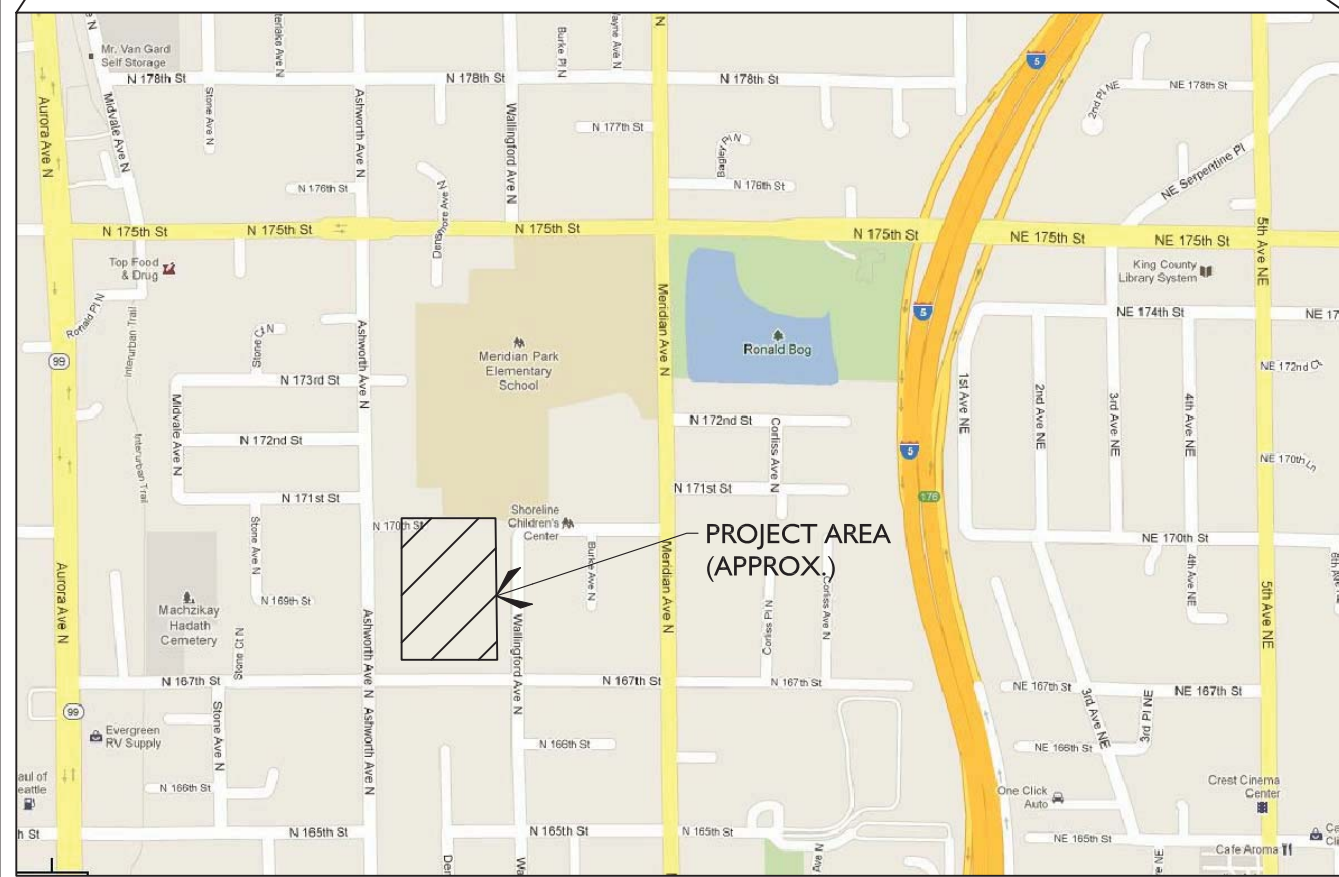
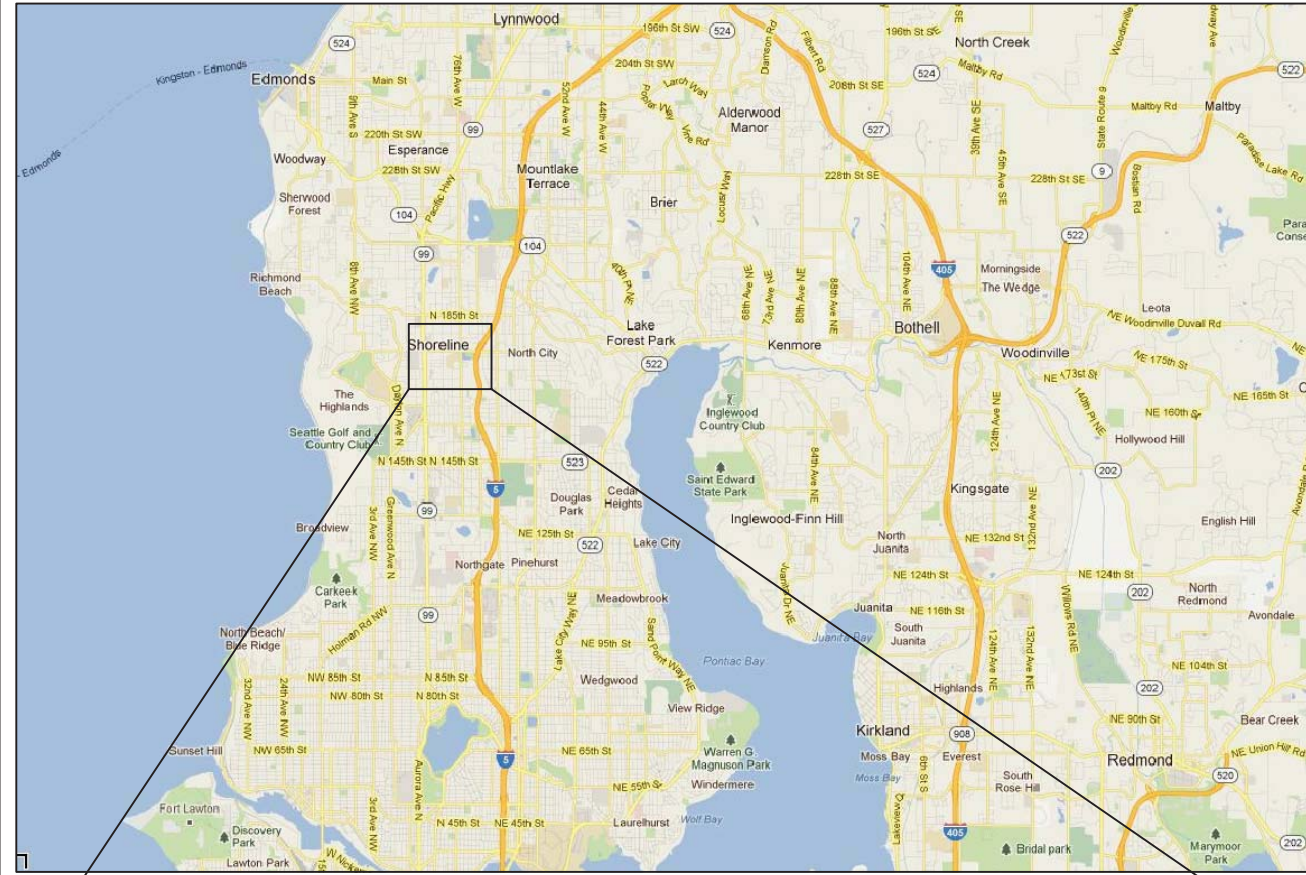
Questions about *Arts al Fresco*,  
*Piano Time* or the *Sculpture Stroll*?  
Contact: Ros Bird, Public Art Coordinator,  
[rbird@shorelinewa.gov](mailto:rbird@shorelinewa.gov)  
206-801-2661



---

*Parks, Recreation & Cultural Services*  
*Providing life-enhancing experiences and promoting a healthy community.*  
*To bring our culture to life and transfer it to the next generation.*

# MERIDIAN PARK: ENVIRONMENTAL ENHANCEMENT PLAN



VICINITY MAPS

**SHEET INDEX**

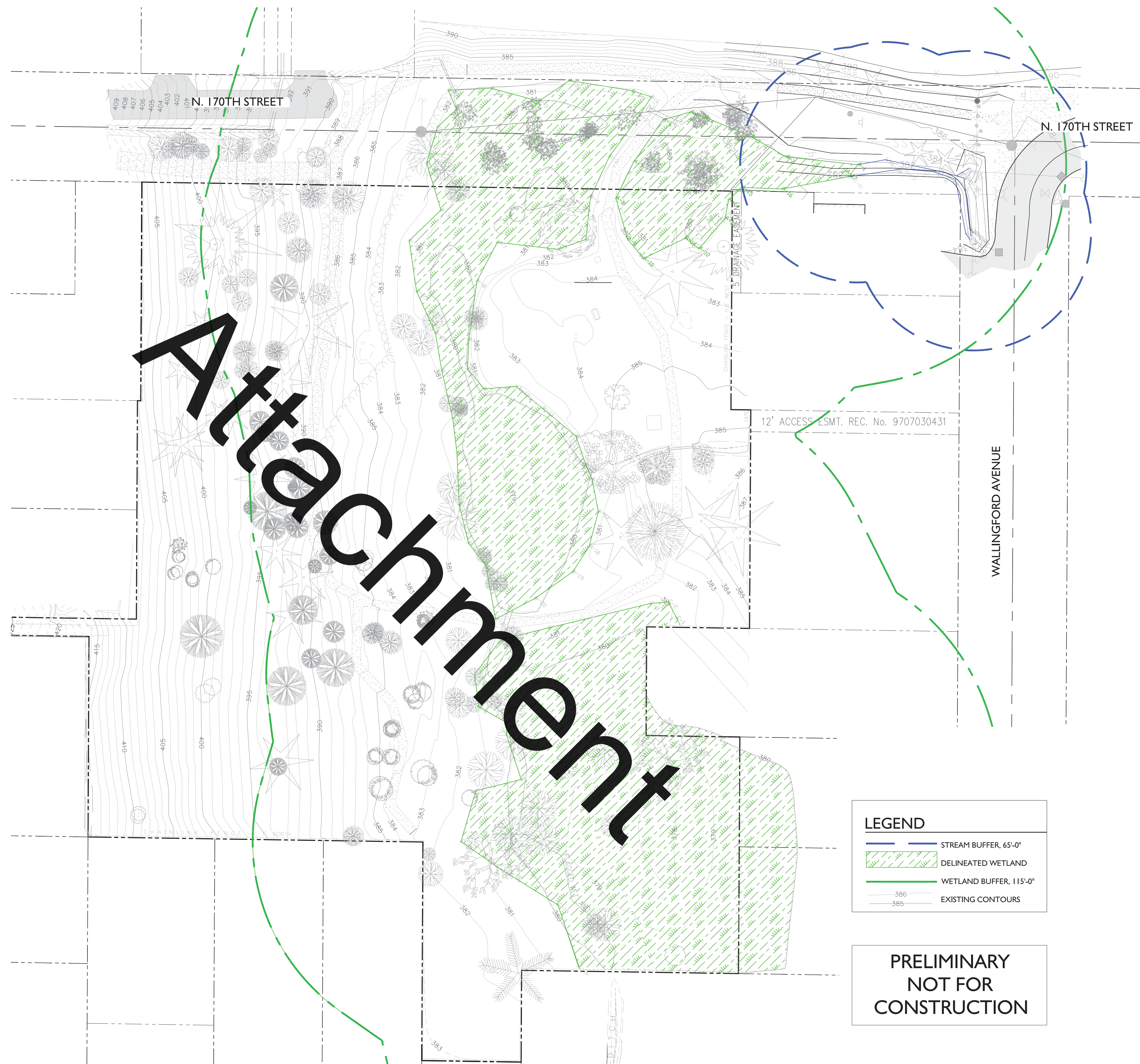
1	EXISTING CONDITIONS
2	GRADING AND TESC PLAN
3	TESC NOTES
4	RESTORATION PLAN
5	TESC, PLANTING AND SITE DETAILS
6	DETAILS CONT., PLANTING NOTES & SPECS
7	MITIGATION NOTES

**CONTACT**

**OWNER:**  
NORTH SHORELINE  
17500 MIDVALE AVE. N  
SHORELINE, WA 98133  
(206) 801-2472  
CONTACT: ROSS HELLER

**ENVIRONMENTAL CONSULTANT:**  
THE WATERSHED COMPANY  
750 SIXTH STREET SOUTH  
KIRKLAND, WASHINGTON 98033  
(425) 822-5242  
CONTACT: SKY MILLER

1. SURVEY IN MARCH, 2010 PROVIDED BY APS SURVEY AND MAPPING, BELLEVUE, WA. ADDITIONAL SURVEY IN JANUARY, 2012 PROVIDED BY AXIS SURVEY AND MAPPING, KIRKLAND, WA. DATUM NAVD 83.
2. UNLESS OTHERWISE NOTED, WETLANDS DELINEATED BY THE WATERSHED COMPANY IN APRIL, 2010.



**EXISTING CONDITIONS**  
SCALE: 1" = 30'-0"

**LEGEND**

	STREAM BUFFER, 65'-0"
	DELINEATED WETLAND
	WETLAND BUFFER, 115'-0"
	EXISTING CONTOURS

**PRELIMINARY  
NOT FOR  
CONSTRUCTION**



**THE WATERSHED COMPANY**

750 Sixth Street South  
Kirkland WA 98033  
p 425.822.5242 f 425.827.8136  
www.watershedco.com  
Science & Design

**MERIDIAN PARK**  
ENVIRONMENTAL ENHANCEMENT PLAN  
60% PERMIT SET  
CITY OF SHORELINE  
NORTH 170TH STREET & WALLINGFORD AVENUE  
SHORELINE, WA

**SUBMITTALS & REVISIONS**

NO.	DATE	DESCRIPTION	BY
1	01-30-12	GRADING REVIEW SET	MG/MF
2	03-07-12	60% C.D. REVIEW SET	MG/MF

**SHEET SIZE:**  
ORIGINAL PLAN IS 22X34  
SCALE ACCORDINGLY.

**PROJECT MANAGER:** HM  
**DESIGNED:** HM/MG  
**DRAFTED:** MG/MF  
**CHECKED:** HM/MG  
**JOB NUMBER:** 100208.1  
**SHEET NUMBER:** 1 OF 7

DATE: 3/7/2012  
PRINTED BY: MARK GAREF  
FILENAME: MERIDIAN PARK PLAN E.DWG