

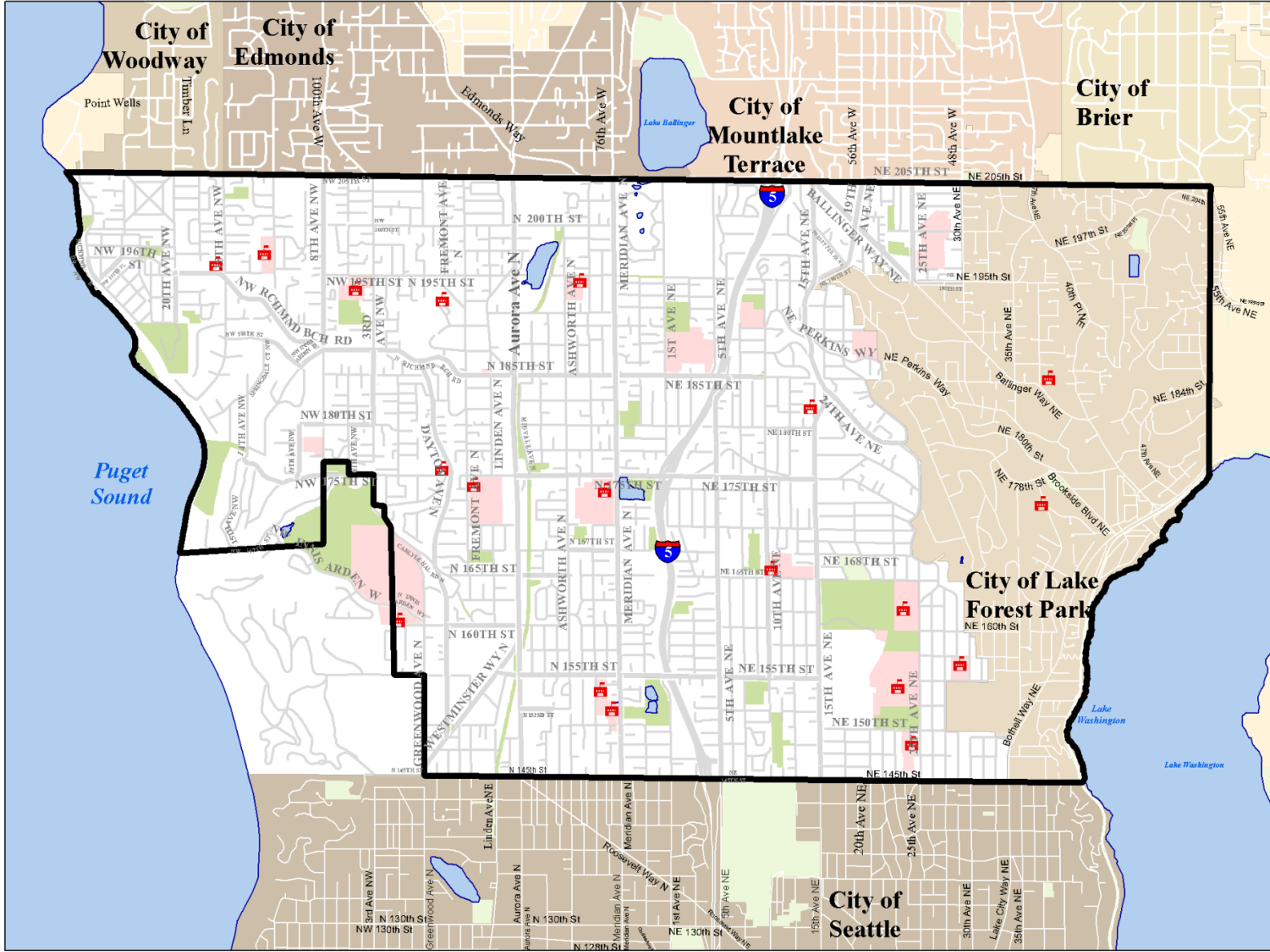
Metropolitan Park District

Richmond Beach Community
Association

March 13, 2012

Current Status

- City of Shoreline – Parks & Recreation Program
 - 28 Parks (404 Acres), Pool, Spartan Gym, Richmond Highlands Recreation Center
- Park and Recreation District formed in 1958
 - Boundaries are Shoreline and Lake Forest Park, excluding the Highlands
 - Levy Propositions in 1991 and 1992 Failed
 - Inactive
 - No Condemnation Authority
 - Would Need to be Dissolved Prior to Creation of Other District



Draft
Approximate
Boundary for
1958
Shoreline
Park District

Legend
[Black outline] Park District, 1958

Other Map Features
[Red square with cross] School
[Light green square] Other City Park
[Dark green square] City of Shoreline Park

1,400700 0 1,400 Feet
[Scale bar]



Date: 3/13/2012
Name: ParkDistrict1958

State Statute

- Park & Recreation Service Area
- Park and Recreation Districts (Finn Hill)
 - Joint Park and Recreation Districts that encompass two or more counties
- Metropolitan Park District

Purpose

| Park and Recreation Service Area | Park and Recreation District | Metropolitan Park District |
|---|--|--|
| Finance, acquire, construct, maintain & operate | Provide recreational activities and facilities | Manage, control, improve, maintain and acquire parks and recreational facilities |

Formation & Election

| Park and Recreation Service Area | Park and Recreation District | Metropolitan Park District |
|---|---|--|
| <p>Unincorporated Area – Resolution by County Legislative Body or Petition of 10% of Registered Voters in Area</p> <p>Requires Resolution by City Approving Inclusion</p> <p>Election at General or Special Election Majority Approval Required</p> | <p>Petition of 15% of Registered Voters Residing in Area</p> <p>Requires Resolution of City Approving Inclusion</p> <p>Next General State Election at least 60 days after boundaries set Majority Approval Required</p> | <p>Can cross city/county borders</p> <p>Petition of 15% of Registered Voters and submitted to County Auditor or</p> <p>Resolution by governing bodies included in proposed district</p> <p>Election at General or Special Election Majority Approval Required</p> |

Governance

| Park and Recreation Service Area | Park and Recreation District | Metropolitan Park District |
|---|---|--|
| <p>Members of County Legislative Authority and if City within Boundaries and/or Multi-County Area then and Interlocal Cooperation Agreement</p> | <p>Five Commissioners Elected from Designated Districts</p> | <p>Five Elected Commissioners OR If One City or County then City Council or County Commissioners OR Multiple Cities or Counties – Appointments from City Council or County Commissioners</p> |

\$5.90 Levy Rate Limit

- Aggregate of Regular Levy Rate of:
 - Senior Taxing Districts (Cities & Counties)
 - Junior Taxing Districts (Fire Districts, Park Districts & Metro Parks, Library Districts, Flood Control, Others)
- Current Total \$4.93
 - Leaves \$0.97 for Park District Operating Levy
- If Aggregate Exceeds \$5.90 then Junior Taxing District Rates Reduced

Tax Authority

| | Park and Recreation Service Area | Park and Recreation District | Metropolitan Park District |
|--------------------------|---|---|--|
| Operations & Maintenance | Up to \$0.60 per \$1,000 AV; Six Year Limit; 60% of Voters Must Approve | Up to \$0.60 per \$1,000 AV; Six Year Limit; 60% of Voters Must Approve | Up to \$0.75 per \$1,000 AV; Levy is Permanent; Majority Approval |
| \$5.90 Rule | Yes – First to be reduced | Yes – First to be reduced | Yes – Reduced after other Park & Recreation Districts |
| Capital (Voted Bond) | 60% Approval Limit = 2.5% of AV | 60% Approval Limit = 1.25% of AV | 60% Approval Limit = 2.5% of AV |
| Capital (Non-Voted Bond) | 0.375% of AV | 0.375% of AV | 0.25% of AV |

Condemnation Authority

| Park and Recreation Service Area | Park and Recreation District | Metropolitan Park District |
|----------------------------------|------------------------------|----------------------------|
| None | None | Yes |

MPD Capital Examples

“Back of Napkin” Estimates

- 60% Voter Approval Required
- Assume a \$50 million Purchase Price
 - Repaid over 20 Years
- Based on Property Value:
 - 100% of Shoreline & Woodway
 - Shoreline Tax Payer = \$207/Year
 - Woodway Tax Payer = \$571/Year
 - 50% of Shoreline & 100% of Woodway
 - Shoreline Tax Payer = \$388/Year
 - Woodway Tax Payer = \$1,073/Year

MPD Operations & Maintenance

- Subject to the \$5.90 Rule
- Maximum MPD rate \$0.75/\$1,000 AV
 - 100% of Shoreline & Woodway = \$5.1 Million
 - 50% of Shoreline & Woodway = \$2.7 Million
 - Shoreline Tax Payer = \$252/Year
 - Current City Property Tax = \$538/Year
 - Woodway Tax Payer = \$697/Year
 - Current City Property Tax = \$2,100

Combined Capital & Operations “Back of Napkin” Estimates

| | Shoreline | Woodway |
|-------------------------------|-----------|---------|
| Operations & Maintenance Levy | \$252 | \$697 |
| Capital Levy (100% Shoreline) | \$207 | \$571 |
| Total | \$459 | \$1,268 |
| Capital Levy (50% Shoreline) | \$388 | \$1,073 |
| Total | \$640 | \$1,770 |
| Current Average City Tax | \$538 | \$2,100 |