



Kids exploring Puget Sound during low-tide. Photo credit: Andrea Snyder.

Help us build a better Shoreline!

The City of Shoreline's Surface Water Utility works hard to protect our community and environment.

Imagine cleaner streams and lakes, more trees, less flooding from rainstorms, and a Shoreline ready for climate change. We're planning our projects through 2030 and we want to know what is important to you! Your feedback will help us decide which projects and programs we will do.



Scan me!

Tell us what you want at:
bit.ly/SurfaceWaterSurvey

Share your feedback by Monday, January 31, 2023

Read on to learn more about our work and then tell us how we can make Shoreline a better place to live, work, and play.

¡Ayúdenos a construir una Shoreline mejor!

City of Shoreline's Surface Water Utility trabaja arduamente para proteger nuestra comunidad y el medioambiente.

Imagine arroyos y lagos más limpios, más árboles, menos inundaciones causadas por tormentas y una Shoreline preparada para luchar contra el cambio climático. ¡Estamos planificando nuestros proyectos con miras a 2030 y queremos saber qué es importante para usted! Sus comentarios nos ayudarán a decidir qué proyectos y programas llevar a cabo.



Escanee aquí.

Cuéntenos lo que desea en:
bit.ly/SurfaceWaterSurvey

Comparta sus comentarios antes del lunes 31 de enero de 2024

Continúe leyendo para obtener más información sobre nuestro trabajo y luego cuéntenos cómo podemos hacer de Shoreline un mejor lugar para vivir, trabajar y jugar.

Para obtener una versión traducida de este informe, visite engage.shorelinewa.gov/surfacewater o envíe un correo electrónico a clovelace@shorelinewa.gov.

帮助我们建设一个更美好的 Shoreline!

City of Shoreline Surface Water Utility 努力保护我们的社区和环境。

想象一下，溪流和湖泊变得更干净，树木更多，暴雨造成的洪灾减少，还有为应对气候变化做好准备的 Shoreline。我们正在规划到 2030 年的项目，我们想知道什么对您最重要！您的反馈意见将帮助我们决定开展哪些项目和计划。



扫描这里!

请通过下列网站告诉我们您的愿望:
bit.ly/SurfaceWaterSurvey

请在 2023 年 1 月 31 日 (星期一) 之前与我们分享您的反馈意见

请继续阅读，以了解更多有关我们工作的信息，然后告诉我们如何才能让 Shoreline 成为一个更适合居住、工作和娱乐的地方。

如需本报告的翻译版本，请访问 engage.shorelinewa.gov/surfacewater 或发送电子邮件至 clovelace@shorelinewa.gov。



የተሻለ Shoreline እንድንገነባ ያግዙን!

City of Shoreline Surface Water Utility ማህበረሰባችንን እና አካባቢያችንን ለመጠበቅ ጠንክሮ ይሰራል።

አስቡት፣ የበለጠ ንጹህ ጅረቶች እና ሀይቆች፣ ብዙ ዛፎች፣ ከዝናብ ጎርፍ ያነሰ ጎርፍ፣ እና ለአየር ንብረት ለውጥ የተዘጋጀ እና የሚዋጋ Shoreline። ፕሮጀክቶቻችንን እስከ 2030 ድረስ እያቀድን ነው እና ለእርስዎ አስፈላጊ የሆነውን ማወቅ እንፈልጋለን! የእርስዎ አስተያየት የትኞቹን ፕሮጀክቶች እና ፕሮግራሞች እንደምናደርግ ለመወሰን ይረዳናል።



የሚፈልጉትን ይጎብኙ በ:-
bit.ly/SurfaceWaterSurvey

እስከ ሰኞ ጃንዋሪ 31፣ 2023 ድረስ አስተያየትዎን ያካፍሉ

ስለ ስራችን የበለጠ ለማወቅ ያንብቡ እና ከዛ Shorelineን እንዴት ለመኖር፣ ለመስራት እና ለመጫወት የተሻለ ቦታ ማድረግ እንደምንችል ይጎብኙ።

የዚህን ዘገባ ትርጉም ለተተረጎሙ፣ engage.shorelinewa.gov/surfacewater ን ይጎብኙ ወይም በኢሜል clovelace@shorelinewa.gov ይጎብኙ።

ዝላሽት Shoreline አብ ምህንጽ ሓግዙና!

አገልግሎት ጽፍሓዊ ማይ ከተማ ሸርላይን (City of Shoreline's Surface Water Utility) ንማሕበረሰብናን ከባቢናን ሓለዎ ንምግባር ብትረት ይሰርሕ።

ሕሰቡዎ'ሞ፣ ዝላሽ ጽርዖት ዘለዎም ርባታትን ቃላቶችን፣ ዝያዳ አግራባት፣ ዝተሓተ ውሕጅ ዝናም ከምኡ'ውን ድሉውቲን ንለውጢ ክለሚ እትቃለስን Shoreline። ን 2030 ፕሮጀክቶታትና ንትልም ስለዘለና ንዓኸትኩም አገዳሲ ዝኹን ነገር ክንፈልጦ ንደለ! እትህቡና መልስታት ኣይኖም ፕሮጀክታትን መደባትን ከም እንሰርሕ ንምውሳኔ ይሕግዛና።



በዚ ዝስዕብ እንታይ ከም እትደልዩ ንገሩና:-
bit.ly/SurfaceWaterSurvey

መልስኹም ብሰነይ፣ ጃኗሪ 31፣ 2023 ኣካፍሉ

ብዛዕባ ስራሕና ዝያዳ ኣንብቡ'ሞ ከብኡ ን Shoreline ብኸመይ ገይርና ዝላሽት መንበሪ፣ መስርሒን መዘናግዒ ቦታ ከም እንገብራ ንገሩና።

ንዝተተረጎመ ስሪት ናይዚ ጸብጻብ፡ ኣብ engage.shorelinewa.gov/surfacewater ወይ ብኢሜይል clovelace@shorelinewa.gov ተወክሱ።

Why does the City have a Surface Water Utility?

Let us tell you!



In Shoreline, rainwater lands on hard surfaces, like buildings, roads, and parking lots. Rainwater flowing across hard surfaces causes two problems:

1. Rainwater can't soak into hard surfaces. This makes flooding more likely.
2. Rainwater picks up whatever it touches, like car leaks, fertilizers, pet waste, and litter. Polluted rainwater flows into storm drains or ditches.



Polluted rainwater flows from storm drains or ditches into underground pipes. These pipes carry polluted rainwater to the nearest natural waterway. This water is not cleaned, which means polluted rainwater goes straight into streams, lakes, and Puget Sound.



During heavy rainstorms, polluted rainwater flows out of these pipes in large volumes and quickly, like a firehose! These heavy and fast flows of water tear up streams, lakes, and Puget Sound. This harms fish and wildlife.

Moving rainwater directly to natural waterways is the old way of doing things.

Now, we build systems that slow and clean polluted rainwater. This is often done by letting rainwater soak into the ground. These systems also help prevent flooding in our neighborhoods.

These newer systems protect our streams, lakes, and Puget Sound. They also help our community and environment in other important ways!



When we create better pathways for rainwater, we help our community and environment!

This is because our projects and programs help Shoreline:



Reduce flooding so water doesn't pool in the road or flow onto private property



Restore streams that have been damaged, especially in ways that help salmon



Protect our streams, lakes, and Puget Sound from pollution and erosion



Prepare for and fight climate change, including:

- Preparing for larger storms caused by climate change
- Planting trees and gardens that soak up greenhouse gases



Make Shoreline greener by planting trees and gardens that soak up rainwater



Add new rainwater drainage systems in the neighborhoods that need them



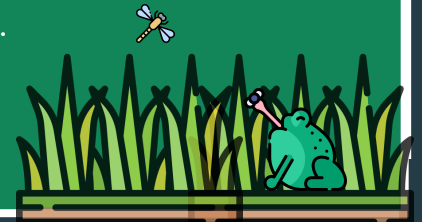
Remove hard surfaces and replace them with trees and plants

Tell us which of the above are most important to you!

We'll use this information to help us choose our projects through 2030.



bit.ly/SurfaceWaterSurvey



Here are a few examples of our projects!

Cromwell Park is more than just a park—it's a natural shield against big storms and a home for wildlife. The park's big wetland collects rainwater from the surrounding neighborhood. It helps prevent floods and cleans polluted rainwater.

This wetland can handle a lot of water, which prepares Shoreline for extra-strong storms caused by climate change. The park is also full of trees and plants that fight climate change and make Shoreline more green and beautiful.

The wetland created a home for wildlife too! When you visit, look for frogs, red-winged blackbirds, Cooper's hawks, and other animals. Cromwell Park is a great example of how our projects better our environment and community!



The Cromwell Park wetland protects our environment and makes this park even more beautiful.



These symbols show how this project helped Shoreline!



Green Street. In Briarcrest, a street with too much pavement experienced regular flooding.

To reduce flooding, we removed some of the pavement and replaced it with gardens. These gardens aren't just for show – they were made to soak up rainwater! We also added new sidewalks designed to soak up rainwater! These are called permeable sidewalks. These gardens and sidewalks help clean the polluted rainwater that flows off of the road.

Projects like Green Street show that creative solutions to managing flooding and pollution can make our neighborhoods more beautiful!



These symbols show how this project helped Shoreline!

*Green Street in bloom during the spring.
Located on 17th Avenue NE and NE 148th Street.*

Hidden Lake Dam Removal. In Shoreview Park, Boeing Creek was dammed many years ago to create a private fishing pond called Hidden Lake. But the dam blocked fish and the lake cost a lot to maintain. In 2022, the City removed the dam and restored the stream.

This project makes Boeing Creek a home for wildlife again. Watch for the return of birds and animals like yellow warblers, kingfishers, newts, herons, and deer. The restoration area is now full of trees and native plants, also helping to fight climate change and make Shoreline greener.

Soon, a pipe that the stream runs through underneath NW Innis Arden Way will be upgraded to a larger pipe. This will allow fish to move through it and help prevent flooding.



Boeing Creek once again flows through Shoreview Park.



These symbols show how this project helped Shoreline!



Shoreline homes and businesses that soak up rainwater support our community and environment

The City offers a **\$2,000 rebate** to property owners to:

- build a new rain garden or
- remove lawn, hard surfaces, or invasive weeds and plant native plants

These gardens help soak up rainwater, which helps reduce flooding and protects our natural waterways!



From this



To this!



However, this rebate isn't enough for big properties like schools, churches, or businesses. It also is not enough for removing large areas of hard surface, like old parking lots.

These types of projects have more environmental and community benefits, but also require more funding.

We are thinking about expanding the rebate program, and want to hear from you about it!

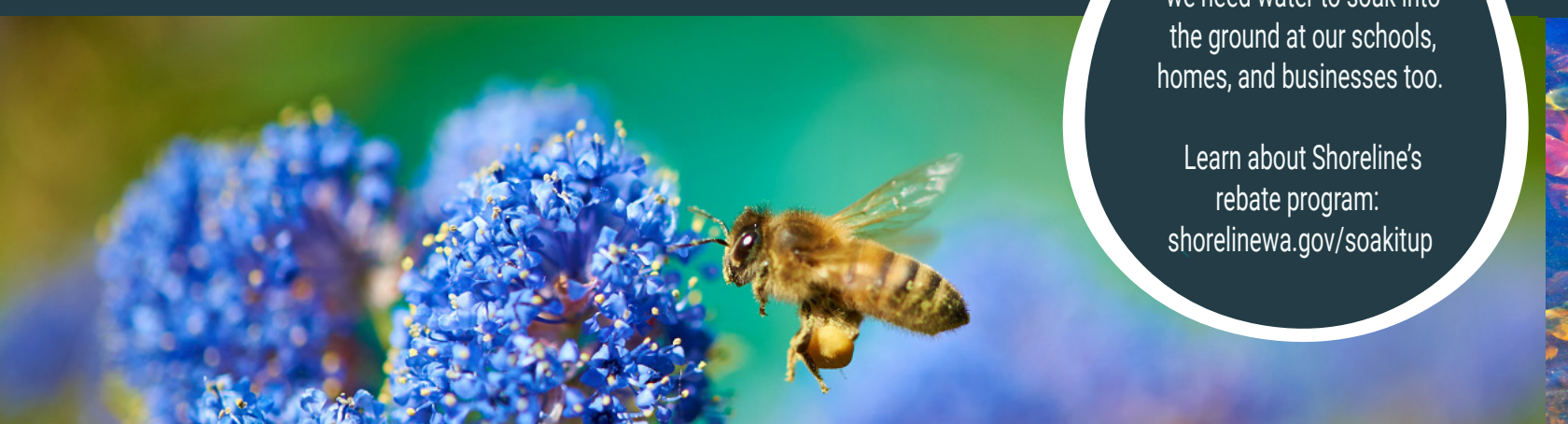
Would you like us to fund larger projects with greater environmental and community benefits?

Tell us at:
bit.ly/SurfaceWaterSurvey



In Shoreline, most land is privately owned. To be effective, we need water to soak into the ground at our schools, homes, and businesses too.

Learn about Shoreline's rebate program:
shorelinewa.gov/soakitup



We are reviewing policies that could change how much you pay in Surface Water Management fees

Policy 1: The City is considering a change to how it calculates Surface Water Management fees.

Hard surfaces don't soak up rainwater. They contribute to flooding and water pollution issues in Shoreline. Surface Water Management fees are paid for by property owners. These fees fund the Surface Water Utility's work.

Currently:

- Single-family households all pay the same fee.
- Other properties are placed into one of six categories, depending on the amount of hard surfaces on their property. These categories range from very light to very heavy. Fees increase by category.

We are considering switching to charging Surface Water Management fees based on the actual amount of hard surface on a property. The more hard surfaces a property has, the more it prevents rainwater from soaking into the ground.



All single-family homes in Shoreline pay the same amount in Surface Water Management fees. However, some homes have far more hard surfaces because they are much larger or have pools, courts, large driveways, or additional buildings.

This change would mean:

- **All single-family households would pay a new fee.** Smaller properties would see a relative decrease. Average-sized properties would likely pay a similar amount to the current fee. Larger properties with a lot of hard surfaces (like driveways, roof areas, patios, courts, additional buildings, etc.) would see a relative increase.
- **Other properties would no longer pay a rate based on what category (very light to very heavy) they fell into.** Their new fee would be based on the actual amount of hard surface on a property.

More information on this possible policy change, including a hypothetical example, is available in our survey.

Policy 2: The City is considering a new fee to help fund improvements needed by redevelopment.

Redevelopment creates new buildings of all sizes. These buildings need to connect to the City's rainwater drainage system. But in some places, there is no nearby public drainage system to connect to.

This means that the City must expand the public rainwater drainage system in some places. Currently, the cost falls on all Shoreline property owners who pay for this work through Surface Water Management fees. This helps minimize barriers to redevelopment.

The City is considering creating a new fee for redevelopment projects that developers would pay. This fee would help fund public drainage improvements needed to support redevelopment.

What do you think about these policies?
Tell us at bit.ly/SurfaceWaterSurvey





PRSRT STD
US Postage
PAID
Seattle, WA
Permit No. 248

17500 Midvale Avenue N
Shoreline, WA 98133-4921

City of Shoreline Surface Water
Utility
2023 Annual Report

For a translated version of this
information, email clovelace@shorelinewa.gov or
call (206) 801-2700.

ECRWSS
POSTAL CUSTOMER

Printed on post-consumer recycled
paper.

Get Help During Storms Or With Drainage Issues:

Flooding Assistance

We can help during storms. Report water on the road or flooding for help.

Call Shoreline City Hall for help
(206) 801-2700

Drainage Assessment

Get help with rainwater flows or drainage issues affecting you. We can often give technical assistance or fix the problem.

Call Shoreline City Hall for help
(206) 801-2700

Free Sandbags

During the fall and winter, fill up sandbags for free at Hamlin Park. Sandbags can help protect your home from rainwater flows.

Hamlin Park:
16006 15th AVE NE



Report Spills and Dumping Immediately!

The sooner we know about a spill,
the faster we can clean it up.

Report spills to protect our waterways.
Staff are available all day, every day.

Call Shoreline City Hall to report
(206) 801-2700.