



Parks, Recreation and
Cultural Services/Tree
Board

August 27, 2015

Meeting begins at **6:30** in Room 303



**Parks, Recreation and Cultural Services Board
2015 Meeting Schedule**

Date:	Time	Location:
September 24	7:00 p.m.	Shoreline City Hall, Room 303
October 22	7:00 p.m.	Shoreline City Hall, Room 303
December 10	7:00 p.m.	Shoreline City Hall, Room 303

PRCS/Tree Board Retreat October 8, 3:00 - 8:00 p.m. Location: TBD



AGENDA
PARKS, RECREATION & CULTURAL SERVICES/TREE BOARD
REGULAR MEETING

Thursday, August 27, 2015
6:30 p.m. – 8:30 p.m.

City Hall Room 303
17500 Midvale Ave North

			<u>Estimated Time</u>
1. CALL TO ORDER/ATTENDANCE			6:30
2. APPROVAL OF AGENDA	Action		6:32
3. APPROVAL OF MINUTES	Action		6:33
4. PUBLIC COMMENT			6:34
<i>Members of the public may address the PRCS/Tree Board on agenda items or any other topic for three minutes or less. When representing the official position of a State registered non-profit organization or agency or a City-recognized organization, a speaker will be given 5 minutes and it will be recorded as the official position of that organization. Each organization shall have only one, five-minute presentation. Please be advised that each speaker's testimony is being recorded. Speakers are asked to sign up prior to the start of the Public Comment period. *</i>			
5. PARKS AND OPEN SPACES IN DENSIFYING NEIGHBORHOODS	Discussion		6:35
6. CRITICAL AREAS ORDINANCE	Discussion		7:30
7. PARK BOARD RETREAT UPDATE	Discussion		8:00
8. DIRECTOR'S REPORT	Information		8:05
9. COMMENTS FROM THE BOARD	Discussion		8:15
10. ADJOURN			8:30

***NOTICE OF DISCLOSURE**

The City of Shoreline will enter all comments received into the public record and may make these comments, and any attachments or other supporting materials, available unchanged, including any business or personal information (name, email address, phone, etc.) that you provide available for public review. This information may be released on the City's website. Comments received are part of the public record and subject to disclosure under the Public Records Act, RCW 42.56. Do not include any information in your comment or supporting materials that you do not wish to be made public, including name and contact information.

The PRCS/Tree Board meeting is wheelchair accessible. Any person requiring a disability accommodation should contact the City Clerk's Office at 801-2230 in advance for more information. For TTY telephone service call 546-0457.

DATES TO REMEMBER

SummerSet Arts Festival: Celebrating Ronald Bog

September 12, Noon – 5:00 p.m. at Ronald Bog Park

Richmond Beach Saltwater Park Volunteer Work Party

September 26, 9:00 a.m. - noon

Food Truck Shoreline at Aurora Square, Richmond Beach, and Ridgecrest. More information at <http://shorelinewa.gov>

Shoreline Farmers Market every Saturday at 10:00 a.m. at Aurora Square

Neighborhood Association Meetings

Council of Neighborhoods Meeting

September 2, 7:00 p.m. City Hall Council Chamber

Ridgecrest Neighborhood Association Board Meeting

September 8, 7:00 p.m. Location: Anderson House – Activities Room

Richmond Beach Community Association Meeting

September 8, 7:30 p.m. Location: Richmond Beach Congregational Church

Parkwood Neighborhood Association Leadership Meeting

September 9, 7:00 p.m. Location: Aegis of Shoreline Library

Meridian Park Neighborhood Monthly Leadership Meeting

September 15, 6:30 p.m. Location: Shoreline City Hall

Echo Lake Neighborhood Association Meeting

September 15, 7:00 p.m. Location: Shoreline City Hall Room 301

Full list with links to more information at <http://shorelinewa.gov>



**Meeting Minutes for the Parks, Recreation
and Cultural Services Board / Tree Board
Special Meeting—Annual Tour of Parks & Facilities**

**July 23, 2015
6: 00 p.m.**

**Shoreline City Hall
Room 104**

1. Call to Order/Attendance

The meeting was called to order by Chair Sycuro at 6:02 p.m.

Park Board Members Present: Christine Southwick, William Franklin, Katie Schielke, John Hoey, Jesse Sycuro, Betsy Robertson, Vadim Dolgov, Cindy Dittbrenner

Absent: Lauren Smith

City Staff Present: Eric Friedli, Director; Kirk Peterson, Parks Maintenance Superintendent; Lynn Gabrieli, Administrative Assistant III

2. Approval of Agenda: Chair Sycuro requested the addition of “Comments from the Board” following the Echo Lake Donor Bench discussion. So moved by Ms. Southwick and seconded by Ms. Robertson. The motion carried and the agenda was approved as amended.

3. Approval of Minutes: Chair Sycuro called for a motion to approve the June, 2015 Board minutes. So moved by Ms. Robertson and seconded by Ms. Schielke. The motion carried.

**4. Public Comment
None**

5. Director’s Report

Eric Friedli, Director

- The Shoreline Veterans Recognition Plaza is under construction.
- The stage is under construction for Aurora Theatre Company’s production of Fiddler on the Roof which will perform every Friday and Saturday evening through the month of August.
- The City’s budget process is underway. Parks Department budget documents are due Friday, July 24 followed by meetings with ASD and the City Manager prior to City Council approval in November. When the City Manager presents the budget to the City Council the public will be invited to comment. A budget discussion will be added to the Board’s agenda for the October regular meeting.
- The Quarterly Tree Report is in the agenda packet.
- Summer is full of events. See the calendar on the back of the agenda for information.
- The Seattle Conservation Association will be clearing invasive plants in North City Park as part of Crime Prevention through Environmental Design.
- The Board requested staff feedback regarding the July 13 meeting with the PRCS Board. Staff replied that the Councilmembers responded favorably to the interaction.

6. Donor Bench Program Expansion to Echo Lake Park

Staff provided contextual information regarding the history of the Donor Bench program. A process for announcing the availability of benches at Echo Lake Park was explained per the Agenda Packet memo. **Chair Sycuro called for a motion to approve the expansion of the Donor Bench program to Echo Lake Park. So moved by Ms. Southwick and seconded by Mr. Hoey. The motion carried.**

7. Comments from the Board:

The Board discussed their experience meeting with the City Council on July 13.

8. Tour

The Board followed the itinerary laid forth in the agenda. Miranda Redinger, Senior Planner, met the Board and staff at Spartan Recreation Center and led a walking tour of the 185th Street Light Rail Subarea. The Board asked questions and considered potential impacts to parks, recreation, and open spaces in higher density areas, including the need for public art, signage, and a new pool/community center.

The Board made one unscheduled stop to tour Darnell Park on foot. The need for park signage and potential volunteer opportunities were considered.

9. Adjournment

The Board returned to City Hall and adjourned the meeting at 8:55 p.m.

Signature of Chair
Jesse Sycuro

Date

Signature of Minute Writer
Lynn Gabrieli

Date



Memorandum

DATE: August 27, 2015
TO: PRCS/Tree Board
FROM: Eric Friedli, Director
RE: Parks and Open Spaces in Densifying Neighborhoods

Requested Board Action

No action is requested. This is a discussion item only.

Project or Policy Description and Background

During the July 23rd meeting the Board was given a tour of the 185th Street Light Rail Station-area. The purpose of that tour was to give the Board members a sense of what is likely to become a denser neighborhood. To follow up on that tour, Guy Michaelson has been invited to lead the Board in a discussion about parks and open spaces in densifying neighborhoods. This discussion is intended to stimulate your thinking about this issue as we move into revisions to the Parks, Recreation and Open Space Plan in 2016.

Guy Michaelson is a Principal with The Berger Partnership, a landscape architecture firm. Mr. Michaelson states:

“I have a passion for shaping the places that support an increasingly dense and rich urban environs, be it spaces in the heart of our cities, or the parks and natural areas that offer escape and revitalization. I relish the process of working with people; allaying their fears and helping them see and be excited for the possibilities of ‘what could be.’ I count myself lucky to be able to say, ‘I love my job!’ This passion for place and community reaches beyond the office, where I’ve given long-winded tours and served on the board of the Seattle Architecture Foundation for over 15 years. I enjoy work with students ranging from my children’s schools to the UW and WSU Landscape Architecture programs. When not at work, you’re likely to find me on a walkabout with my family in a great park, or on an adventure on a never ending quest to explore places new and exciting!

“Three projects that represent my personality and design ideals include [Magnuson Park](#) which exhibits my passionate belief that enhanced human experience and enhanced

ecology can co-exist and thrive!; [Redmond Central Connector](#) where we're reimagining an abandoned space as a place to connect and become catalysts for creating a vibrant, urban community, and [Adams Elementary School's Rain Garden](#), a small, pro bono labor of love that confirms for me the role passion and design play in shaping community."

Key Policy Issues

The discussion may highlight policy issues for future consideration.

Public Involvement Process

There will be a public involvement process to discuss this topic as part of the Parks, Recreation and Open Space Plan update in 2016.

Additional Information

Eric Friedli

efriedli@shorelinewa.gov

206-801-2601



Memorandum

DATE: August 20, 2015

TO: Parks, Recreation and Cultural Services Board

FROM: Juniper Nammi, AICP, Associate Planner
Planning & Community Development Department

RE: Critical Areas Ordinance Update implications for Parks

Requested Board Action

No action is required at this time. Comments to staff, Planning Commission or Council regarding the proposed Critical Areas Ordinance update are welcome up until the scheduled adoption by Council November 2, 2015.

Project or Policy Description and Background

The State of Washington Growth Management Act (GMA) requires the City of Shoreline to periodically update the Comprehensive Plan, Master Plans, and development regulations. The Critical Areas Ordinance (CAO) in Shoreline Municipal Code (SMC) Chapter 20.80 of the Development Code is the final section of development regulations requiring update under this process. The City is required to complete the current periodic update cycle in 2015.

The GMA requires at a minimum that the critical areas regulations be updated to be consistent with best available science for the respective critical areas that are regulated. In addition to State mandated changes City staff is also recommending changes to increase predictability and clarity in the existing regulations.

Early outreach to the Council of Neighborhoods and this board was initiated in late February to inform community leaders and representatives of the project and invite public participation and input. Staff presented on the reasons for this project, the schedule, and minimum requirements. This is of particular interest to the Parks

department and this board because approximately two thirds of the City's parks include regulated critical areas and their buffers.

The City began the periodic update process for the CAO with Planning Commission in May. Detailed information on the process and proposed changes are available in the Planning Commission staff reports and supporting materials for the following meetings.

May 21, 2015 – Critical Areas Ordinance Update project introduction

<http://www.shorelinewa.gov/Home/Components/Calendar/Event/7684/182?toggle=allpast>

June 4, 2015 – Critical Areas Ordinance – Wetlands and Shoreline Master Program

<http://www.shorelinewa.gov/Home/Components/Calendar/Event/7685/182?toggle=allpast>

June 18, 2015 – Critical Areas Ordinance – Geologic Hazards

<http://www.shorelinewa.gov/Home/Components/Calendar/Event/7686/182?toggle=allpast>

July 16, 2015 – Critical Areas Ordinance – Streams/Fish & Wildlife Habitat Conservation Areas

<http://www.shorelinewa.gov/Home/Components/Calendar/Event/8060/182?toggle=allpast>

August 20, 2015 – Critical Areas Ordinance – General Provisions and Misc Title 20 Changes

<http://www.shorelinewa.gov/Home/Components/Calendar/Event/8092/182?toggle=allpast>

The following are the highlights of how the proposed changes will impact City Parks.

- Flexibility added to allow for application of pesticides within critical areas when it is the best option for controlling the invasive species for the specific location. Allows for best practices to be followed consistent with state and federal regulations.
- Exemption for recreational facilities modified to allow for modification and replacement that do not increase the potential impacts to the critical area – made the same as exemption for roads and utilities.
- Provision allowing for small enhancement work by volunteers or consistent with previously approved vegetation management plans clarified and now clearly exempt from permit and critical area requirements within the limits identified.
- Planning Commission direction to revise geologic hazard area provisions so engineer study that an alteration is safe and meets design standards in code will allow for review and permitting in any type of geologic hazard area (if not restricted by other types of critical areas standards).
- Some parks are identified by the state as priority habitat areas. The listing of these areas in the code is to inform the public and staff of the presence of these Fish and Wildlife Habitat Conservation Areas and the need to review for compliance with the state management guidelines for these types of habitat. Not new regulations, just being as clear as possible about where they apply.
- Wetland and Fish & Wildlife Habitat Conservation Area buffers can no longer be reduced in area. They can be averaged, but the total area cannot be reduced. This does not

affect existing legal improvements, but does impact proposed expansions or new projects.

- Breaks in the buffer of wider than eight feet are identified as allowing areas of buffer no longer contiguous to be excluded from buffer regulations. New trails and trail improvements are limited in width and placement to prevent further areas of buffer to be functionally isolated. Does limit the options for trail placement and design.
- No changes proposed at this time for monitoring requirements, but will probably be reviewed next year by PCD independently of this update project.
- Integration of updated critical areas regulations into the SMP simplifies the administration of critical areas regulations within the shoreline jurisdiction and results in consistent standards throughout the City.

Budget Implications

No current budget implications for adoption of these code amendments, but they may impact the cost of planning and building improvements in City Parks. Repair, maintenance, replacement and operation of existing improvements are made a bit easier by the proposed changes.

Public Involvement Process

Please refer to the staff reports to Planning Commission for the details of the public involvement process for this project.

Hidden Lake Dam Removal Project Information

Hidden Lake is a man-made pond located at the intersection of Innis Arden Way and 10th Avenue NW in the Boeing Creek Basin and Shoreview Park. The lake originated when Mr. William Boeing first dammed Boeing Creek to create a fishing pond and small hatchery near his estate; current ownership of Hidden Lake is shared between the City of Shoreline (Shoreview Park) and 5 private property owners.

The lake traps sediment that would otherwise be carried downstream and replenish Innis Arden Beach. The City has to remove sediment from the lake every few years at a considerable cost. In September, 2014, the City Council directed staff to cease dredging the lake, and begin a phased approach to remove Hidden Lake Dam and reestablish Boeing Creek at Hidden Lake.



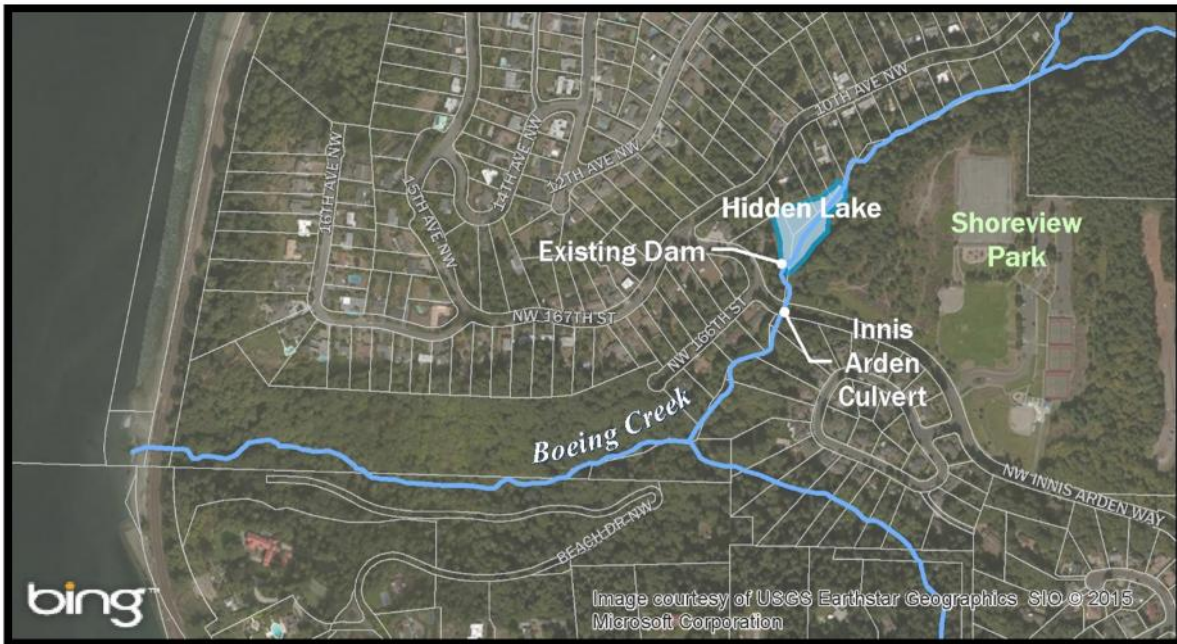
Project Description

This project will remove the Hidden Lake Dam and reestablish Boeing Creek to an open channel. Staff have begun working with Herrera Environmental Consultants to develop construction alternatives. Three concepts have been developed, and the project team is beginning to evaluate how the stream will respond to each alternative, the pros and cons, and costs for each alternative.

Alternative 1 – Low slope channel without change to Innis Arden roadway culvert. This alternative would have no fish passage benefit, but would include large wetland creation. This alternative would include a gentle channel at the head of the lake and shift to a steeper boulder roughened channel at the culvert outlets under Innis Arden Way.

Alternative 2 – Moderate slope channel with plan for future culvert replacements under Innis Arden Way. This alternative allows for fish passage benefits, and moderate wetland creation. The alternative would have a gradually increasing slope as it approached the roadway culverts and would require more grade control (rocks and boulders). This project could be completed in two phases (dam removal and culvert replacement).

Alternative 3 – Moderate slope channel with new culvert under Innis Arden Way. This alternative would allow immediate fish passage benefits with little or no wetland creation. The alternative requires significantly more excavation and the use of grade control with a steeper channel throughout the restoration area. This alternative most closely mimics natural stream conditions such as fish passage and sediment transport.



Stakeholder Involvement

Many people and organizations care about this project, including nearby private landowners, park users, City of Shoreline, other organizations, tribes, and local residents. Carlstad Consulting has been hired to develop an outreach and stakeholder involvement program. As a first step, Carlstad is conducting individual interviews with residents closest to the project site. Following that, a community meeting will be conducted and public input will be incorporated into the project alternatives. Feedback from stakeholder groups including lakeside neighbors and parks users will influence how the details of a particular Alternative are formulated and ultimately designed.

Project Schedule and Funding

The City and Consultant will continue technical work to evaluate the three concepts in more detail, and will begin outreach to potential stakeholders to help further define each of the alternatives. City staff will provide updates to the Parks Board and will conduct a public meeting at the end of summer with greater detail on the size, extent, impact, and cost of each alternative.

Phase 1 of the Hidden Lake Dam Removal is funded by the City of Shoreline Surface Water Utility Fund. This phase is expected to be completed by the March of 2016 and will include outreach for funding from environmental, recreational, and flooding grant agencies.



Project and Contact Information

City of Shoreline Senior Engineering Technician
 Eric Gilmore (206) 801-2454
<http://www.cityofshoreline.com/hiddenlake>